

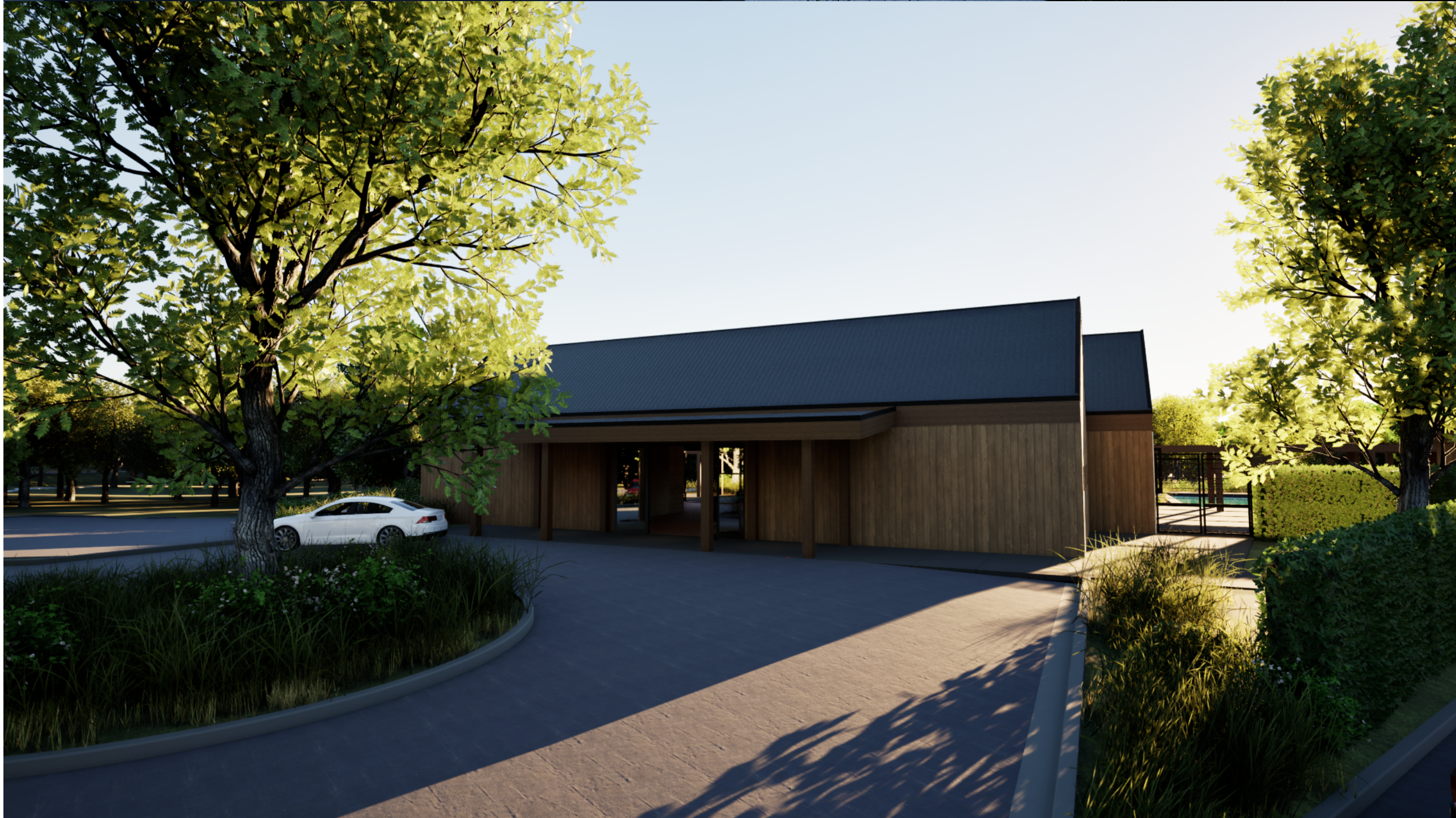
AERIAL VIEW



ENTRANCE FROM SILVERADO TRAIL



ARRIVAL COURT



FRONT ENTRANCE



BACK PORCH



POOL AREA



SILVERADO GROVE

1500 FIRST SITE SUITE
NAPA, CA 94559
CITY OF NAPA RESCINUED RESORT PLAN
NAPA COUNTY ENVIRONMENTAL HEALTH PLAN CHECK ID: 117284



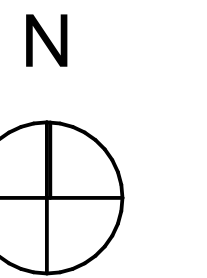
REVISIONS

MARCH 2023 - COORDINATION SET

NOTES:

- All dimensions are shown to F.O. stud unless otherwise noted.
- Original Print: 24x36 Arch D

NORTH



SCALE:

3D IMAGES

PS.1

SHEET



SILVERADO GROVE

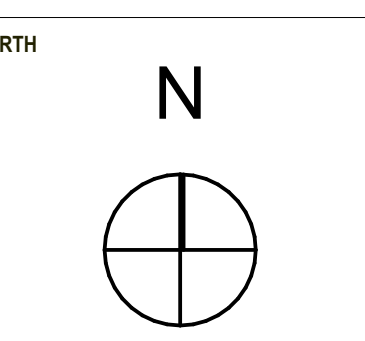
PROJECT: 1000 FIRST SITE SHEET
DATE: 10/11/23
SCALE: 3/16" = 1'-0"



REVISIONS

FOR REVIEW

- NOTES:
- All dimensions are shown to F.O. stud unless otherwise noted.
 - Original Print: 24x36 Arch D.



SCALE:
OCCUPANCY & EGRESS

PS.2

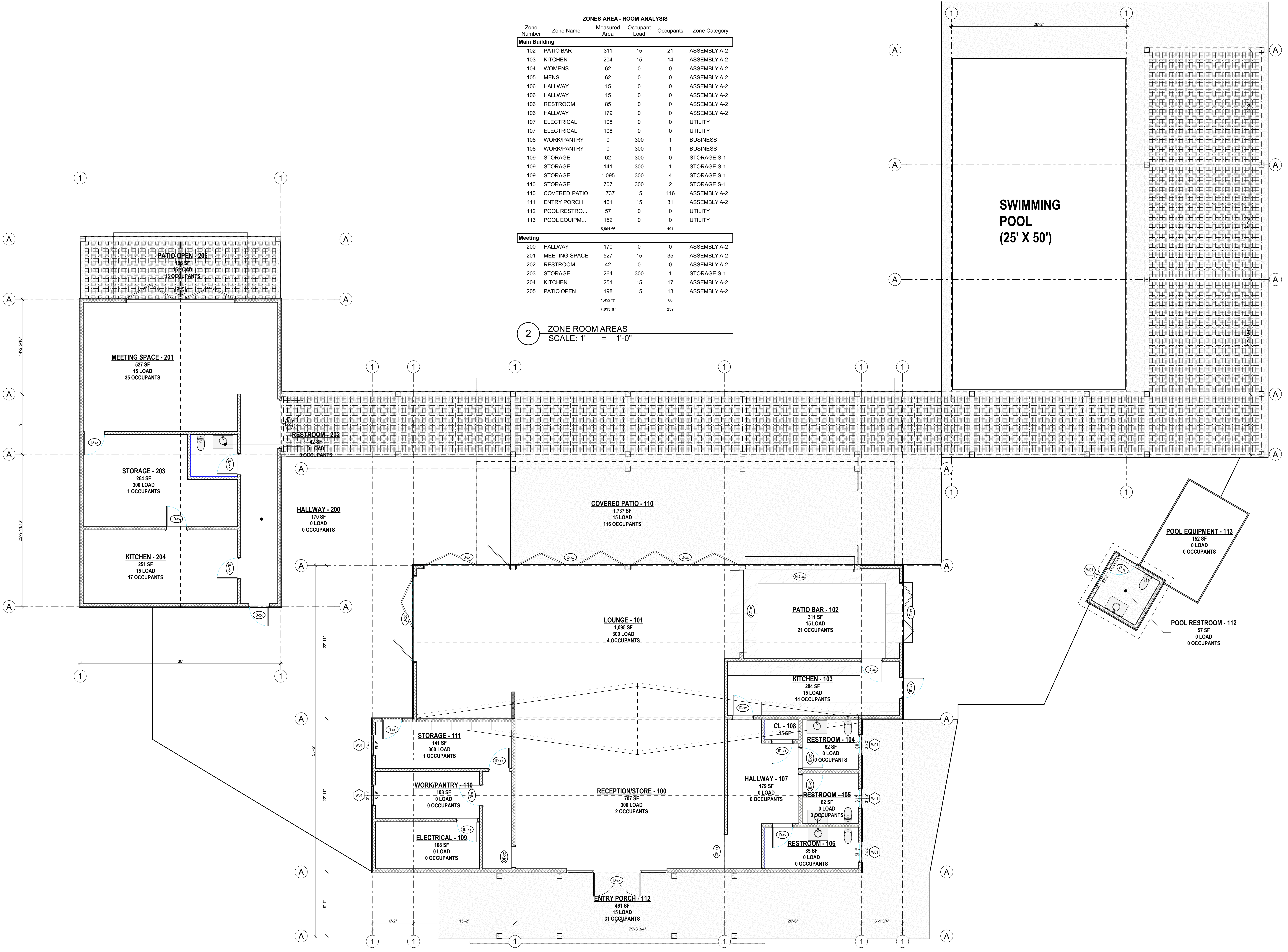
SHEET

ZONES AREA - ROOM ANALYSIS

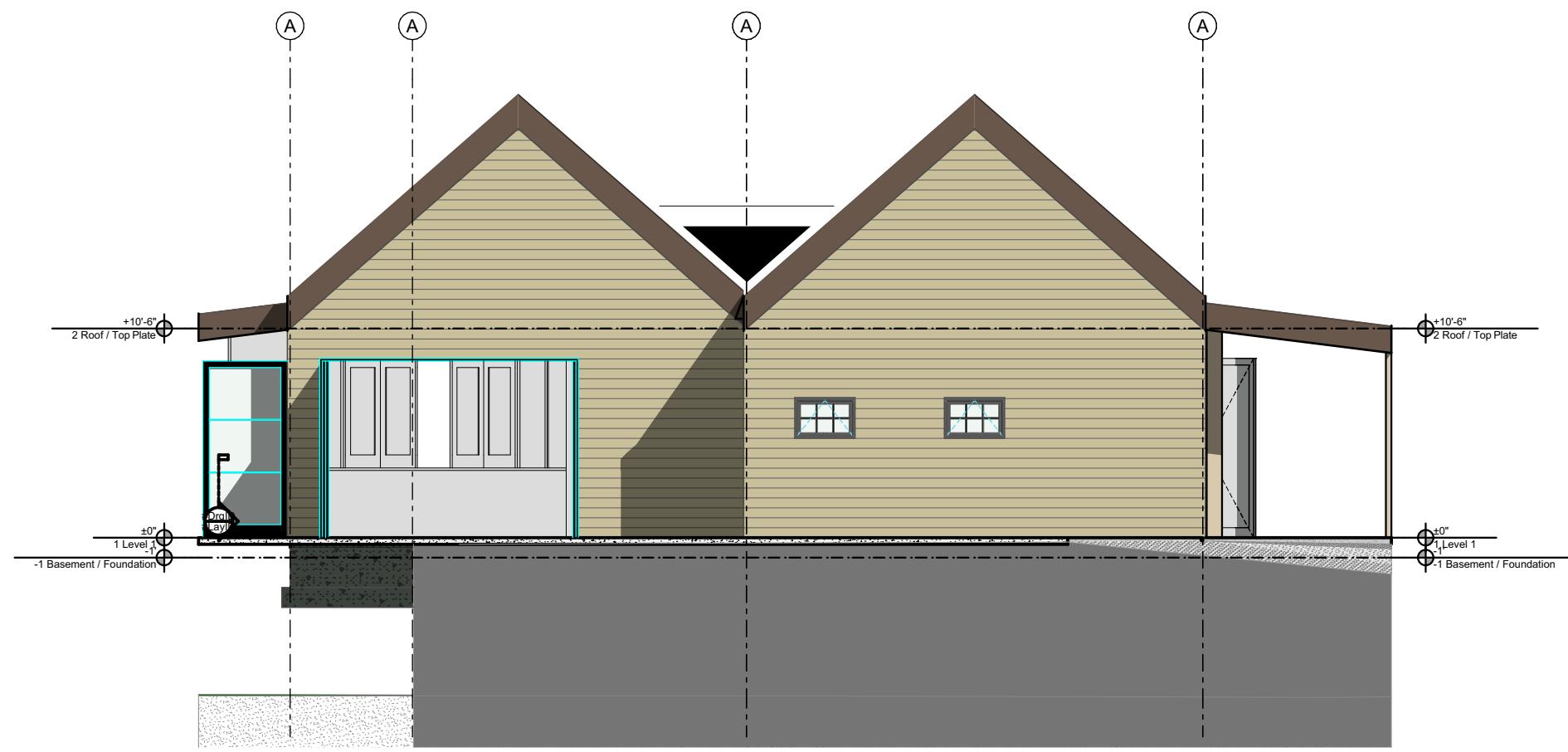
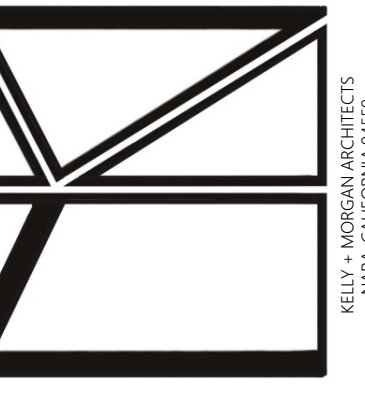
| Zone Number | Zone Name | Measured Area | Occupant Load | Occupants | Zone Category |
|----------------------|----------------|-----------------------|---------------|-----------|---------------|
| Main Building | | | | | |
| 102 | PATIO BAR | 311 | 15 | 21 | ASSEMBLY A-2 |
| 103 | KITCHEN | 204 | 15 | 14 | ASSEMBLY A-2 |
| 104 | WOMENS | 62 | 0 | 0 | ASSEMBLY A-2 |
| 105 | MENS | 62 | 0 | 0 | ASSEMBLY A-2 |
| 106 | HALLWAY | 15 | 0 | 0 | ASSEMBLY A-2 |
| 106 | HALLWAY | 15 | 0 | 0 | ASSEMBLY A-2 |
| 106 | RESTROOM | 85 | 0 | 0 | ASSEMBLY A-2 |
| 106 | HALLWAY | 179 | 0 | 0 | ASSEMBLY A-2 |
| 107 | ELECTRICAL | 108 | 0 | 0 | UTILITY |
| 107 | ELECTRICAL | 108 | 0 | 0 | UTILITY |
| 108 | WORK/PANTRY | 0 | 300 | 1 | BUSINESS |
| 108 | WORK/PANTRY | 0 | 300 | 1 | BUSINESS |
| 109 | STORAGE | 62 | 300 | 0 | STORAGE S-1 |
| 109 | STORAGE | 141 | 300 | 1 | STORAGE S-1 |
| 109 | STORAGE | 1,095 | 300 | 4 | STORAGE S-1 |
| 110 | STORAGE | 707 | 300 | 2 | STORAGE S-1 |
| 110 | COVERED PATIO | 1,737 | 15 | 116 | ASSEMBLY A-2 |
| 111 | ENTRY PORCH | 461 | 15 | 31 | ASSEMBLY A-2 |
| 112 | POOL RESTRO... | 57 | 0 | 0 | UTILITY |
| 113 | POOL EQUIPM... | 152 | 0 | 0 | UTILITY |
| | | 5,961 ft ² | | 191 | |

| Zone Number | Zone Name | Measured Area | Occupant Load | Occupants | Zone Category |
|----------------|---------------|-----------------------|---------------|-----------|---------------|
| Meeting | | | | | |
| 200 | HALLWAY | 170 | 0 | 0 | ASSEMBLY A-2 |
| 201 | MEETING SPACE | 527 | 15 | 35 | ASSEMBLY A-2 |
| 202 | RESTROOM | 42 | 0 | 0 | ASSEMBLY A-2 |
| 203 | STORAGE | 264 | 300 | 1 | STORAGE S-1 |
| 204 | KITCHEN | 251 | 15 | 17 | ASSEMBLY A-2 |
| 205 | PATIO OPEN | 198 | 15 | 13 | ASSEMBLY A-2 |
| | | 1,453 ft ² | | 66 | |
| | | 7,013 ft ² | | 257 | |

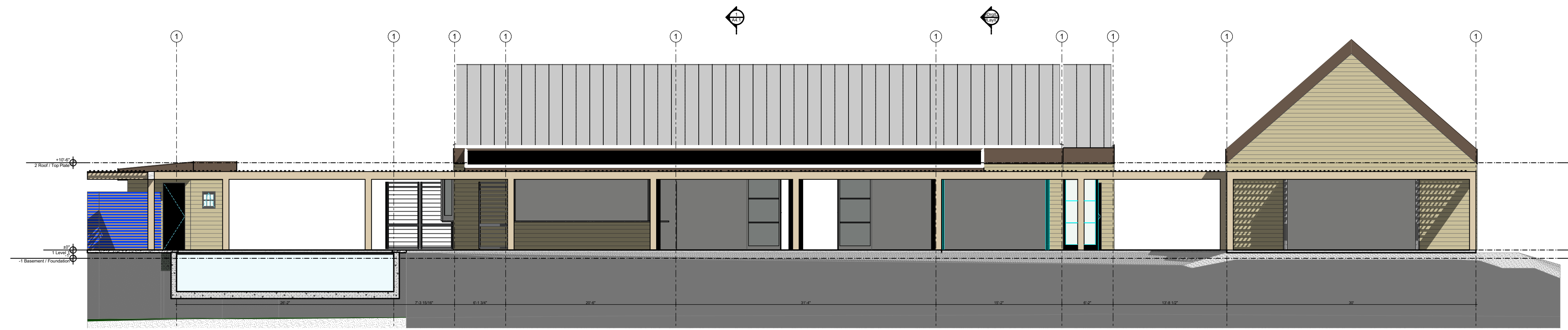
2 ZONE ROOM AREAS
SCALE: 1' = 1'-0"



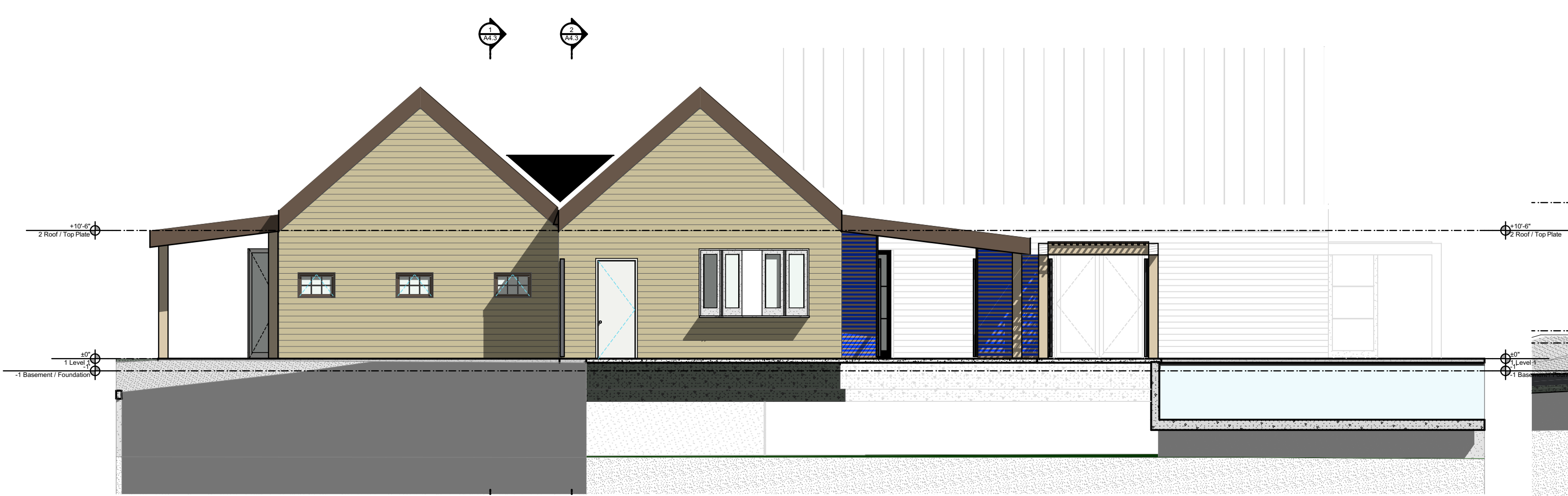
1 1. Level 1
SCALE: 3/16" = 1'-0"



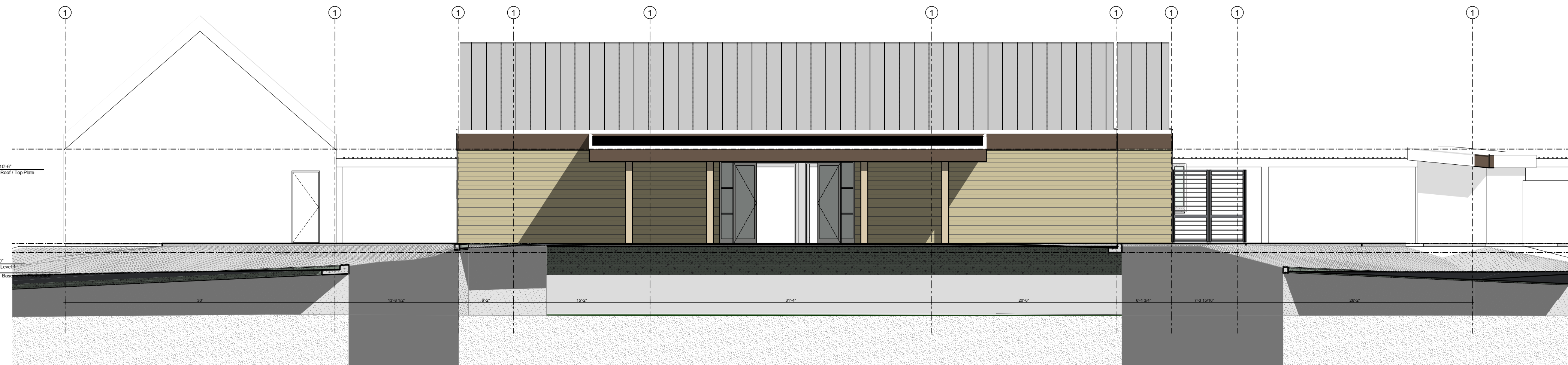
1 WEST
SCALE: 1/8" = 1'-0"



2 NORTH
SCALE: 1/8" = 1'-0"



3 EAST
SCALE: 1/8" = 1'-0"



4 SOUTH
SCALE: 1/8" = 1'-0"

SILVERADO GROVE

PROJECT:
1000 FIRST SITE SUITE E
10000 SILVERADO GROVE
4 PERMIT NO. 2



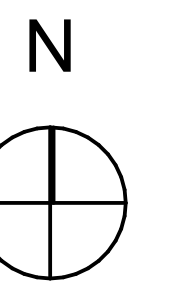
REVISIONS

FOR REVIEW

NOTES:

- All dimensions are shown to F.O. stud unless otherwise noted.
- Original Print: 24x36 Arch D

NORTH



SCALE:

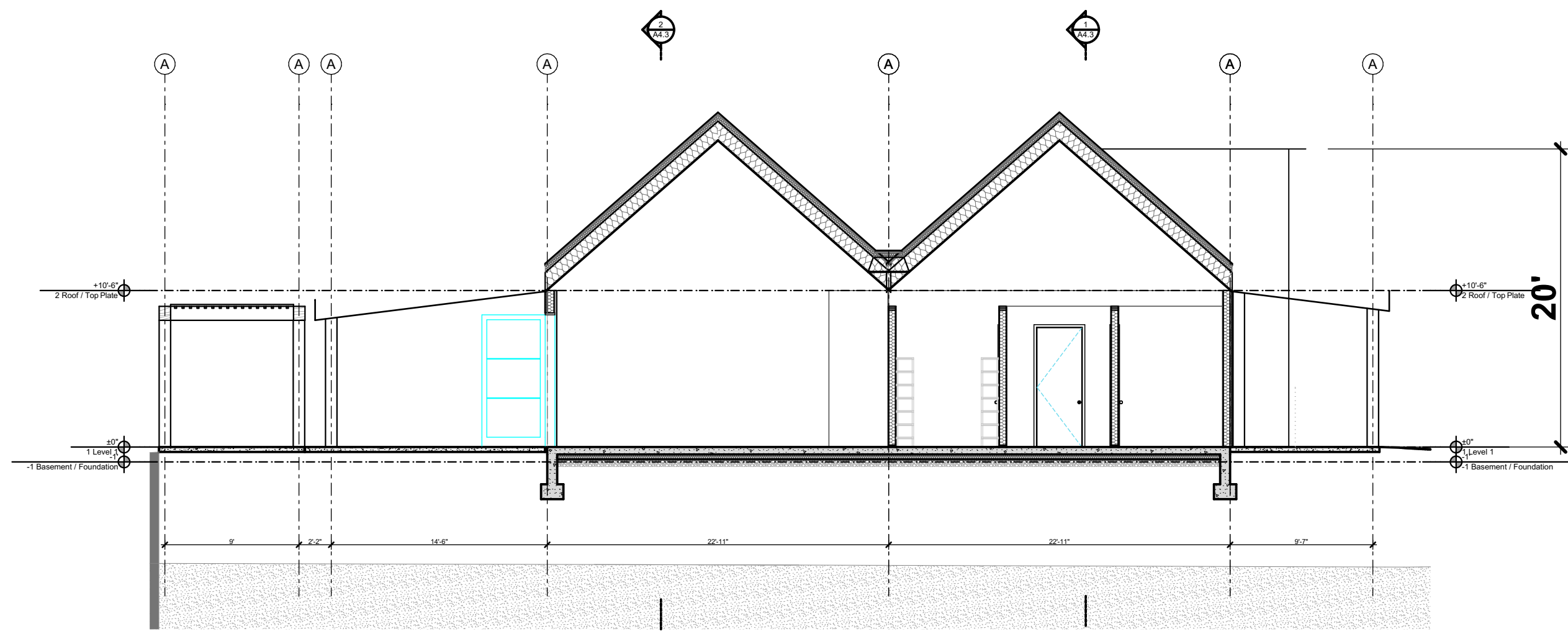
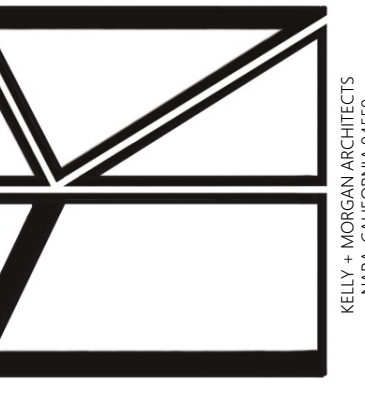
ELEVATION MAIN

PS.6

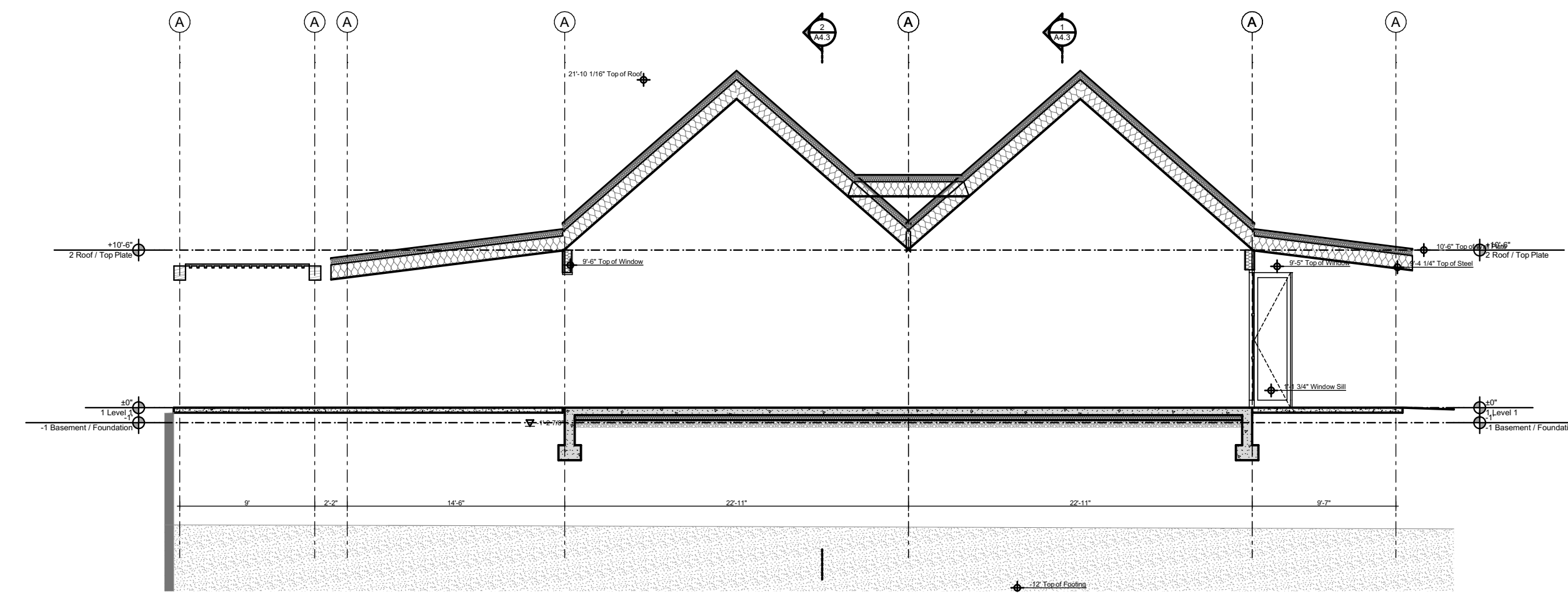
SHEET

MATERIAL NOTES:

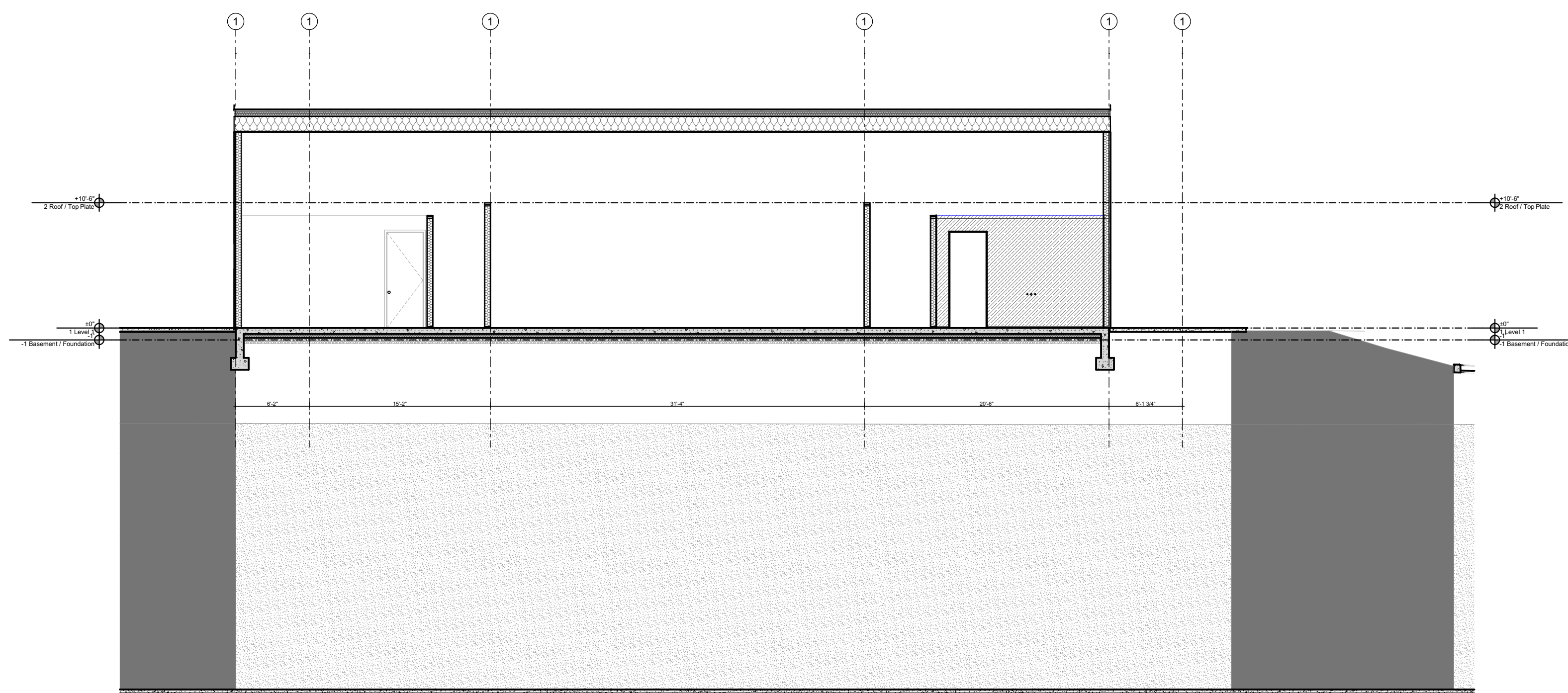
PLEASE SEE SHEET PS.10 FOR SPECIFICATIONS ABOUT CEDAR EXTERIOR SIDING, TRU-EXTERIOR TRIM, SOFFITS, AND SILLS, STANDING SEAM METAL ROOFING, AND PERVIOUS CONCRETE PAVING SURFACE MATERIALS.



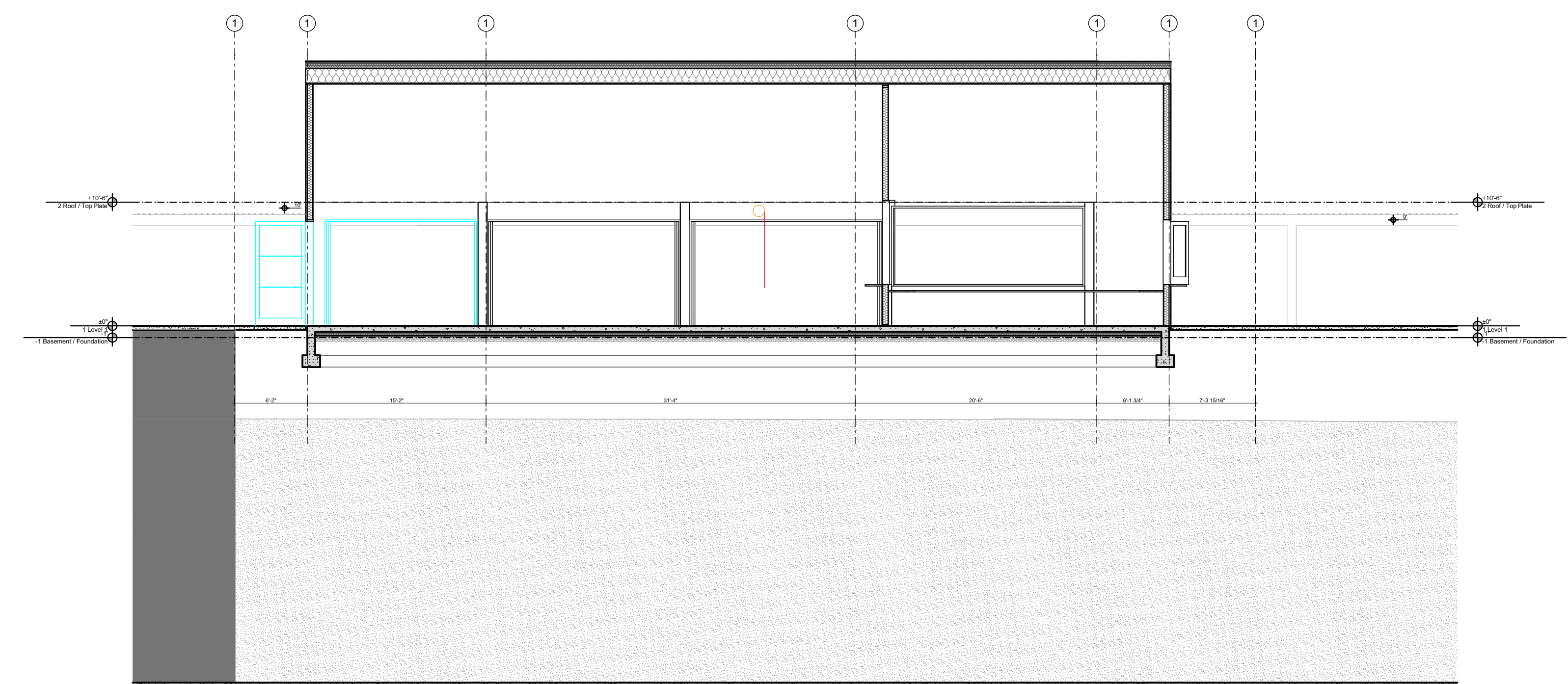
1 BLDG SECTION
SCALE: 1/8" = 1'-0"



2 BLDG SECTION
SCALE: 1/8" = 1'-0"



3 A BLDG SECTION
SCALE: 1/8" = 1'-0"



4 B BLDG SECTION
SCALE: 1/8" = 1'-0"

SECTION NOTES:

PROJECT IS REQUIRED TO COMPLY WITH CITY OF NAPA ZONING ORDINANCE ENTITLED MAXIMUM BUILDING HEIGHT.

THIRTY-FIVE FOOT HEIGHT LIMITS APPLY TO ALL TYPES OF STRUCTURES WITHIN THIS APPLICATION AND NONE ARE PRESENTLY SHOWN TO EXCEED 20' AFF.

CUPOLAS AND SIMILAR ARCHITECTURAL FEATURES, CHIMNEYS, MECHANICAL FEATURES AND SIMILAR APPURTENANCES ATTACHED TO A STRUCTURE ARE ALLOWED AN EXTRA 15 FEET PROVIDED THE SPACE CREATED IS NOT HABITABLE. STRUCTURAL HEIGHTS ARE MEASURED ACCORDING TO THE 2022 CALIFORNIA BUILDING CODE SECTION 202: HEIGHT, BUILDING. THE VERTICAL DISTANCE FROM GRADE PLANE TO THE AVERAGE HEIGHT OF THE HIGHEST ROOF SURFACE.

PROJECT: **SILVERADO GROVE**
1000 FIRST SITE SUITE E
1000 FIRST STREET
NAPA, CALIFORNIA 94930
PROJECT NO. 24-0001



REVISIONS

FOR REVIEW

| NO. | DESCRIPTION |
|-----|-------------|
| | |
| | |
| | |
| | |
| | |
| | |
| | |
| | |
| | |
| | |

NOTES:

- All dimensions are shown to F.O. stud unless otherwise noted.
- Original Print: 24x36 Arch D

NORTH

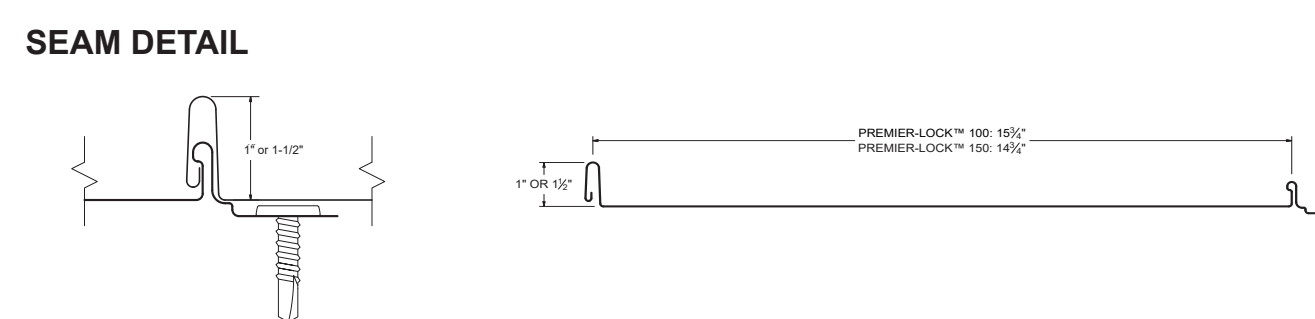
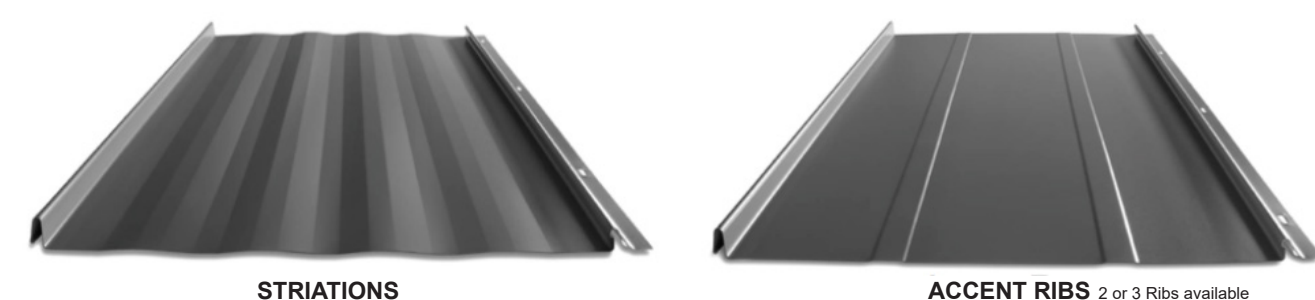


SCALE:

SECTIONS MAIN

PS.7

SHEET



- KEY FEATURES**
- Standard width for Premier-Lock 100 is 15-3/4" Standard width for Premier-Lock 150 is 14-3/4"
 - 24 and 22 Tru-Gauge™ and .032" and .040" Aluminum
 - Factory-notched panels available
 - Anti-Capillary dry lock seam
 - Pre-slotted fasteners flange: allows expansion / contraction of panel
 - Premier-Lock 100 - 1" rib height
 - Premier-Lock 150 - 1-1/2" rib height
 - Concealed fastener system
 - 3:12 minimum pitch recommended (For lower pitches please inquire)
 - Standard panel lengths 2' to 35' (For longer panels, please inquire)
 - Panel options: Striations, Accent Ribs, and Flat Pan
 - Manufactured in Sacramento CA & Riverside CA

- TESTING**
- UL Code compliance UL Evaluation Report UL ETR #25913-01
 - UL Construction No. 589
 - UL 580 Class 90 - Wind Uplift
 - UL 790 Class A (ASTM E108) - Fire rated
 - UL 2218 Class 4 - Impact (hail) rated
 - ASTM A653/A924 - G90 Galvanized
 - ASTM A792 - Zincalume/Galvalume AZ-50/55
 - ASTM B209 - Aluminum Substrate (Premier-Lock™ 100 carries its UL Classification under the Easy-Lock™ profile designation)



The Premier-Lock™ Standing Seam has the anti-capillary dry lock seam. It's designed with softer, less industrial lines to provide a more architecturally pleasing appearance.



Face: Western Red Cedar Vertical Grain
Patterns: Micro-V Joint (aka Eased Edge) Fine Line (aka Nickel Gap)
Widths: 6" nominal, 5-1/4" face
 4" nominal, 3-1/4" face
Lengths: 7 to 18' mixed lengths
Thickness: 1" nominal (11/16")
Conversion Factor: 6" = 1.14 : 4" = 1.23

Dolly Varden is a classic tongue & grooved Western Red Cedar Paneling that uses Shakertown's 60 years of experience to laminate cedar to exterior backing. This system provides you a stronger, more durable engineered paneling with qualities not found in solid cedar.

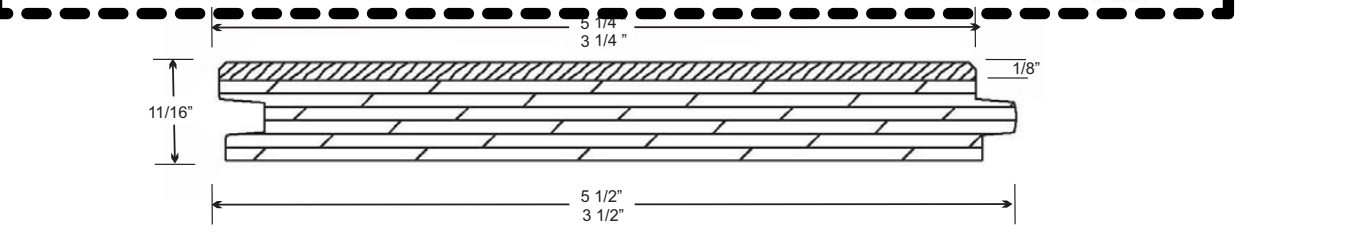
Composition and Materials: Dolly Varden T&G panels are composed of genuine Western Red Cedar and fir bonded with exterior adhesives (under pressure) into an exclusive 7-ply engineered panel. The bonding method of full surface gluing meets the weather test and other requirements for exterior siding as specified under U.S. PS 1-09. Insulation values up to R 1.65 are superior to other siding products.

Finishes: Manufactured in laminated natural Western Red Cedar. Products may be sealed or stained in the field, or factory pre-finished.

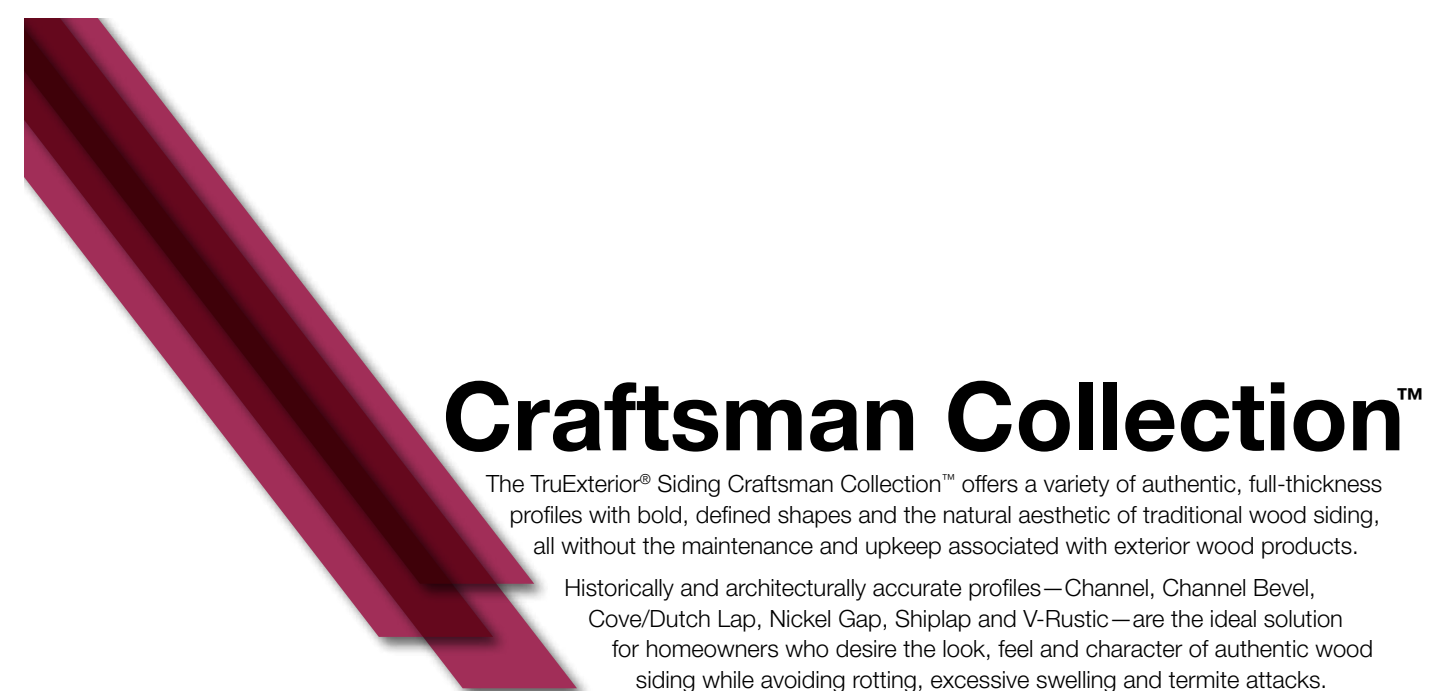
Basic Uses: For exterior paneling on walls or soffits. For interior walls or ceilings.

Limitations: May not be used as a substitute for shear panel, although may be used over shear panels.

Nails: Use of proper nails is important. For exterior applications use a non-corrosive fastener; stainless steel, hot-dipped galvanized or aluminum. Fasteners must be of sufficient length to penetrate into nailable wood, a minimum of 1-1/4". A stainless-steel cap screw is preferred.



Shakertown
 1200 Kerron Street
 Winlock, WA 98596
 800-426-8970
www.Shakertown.com

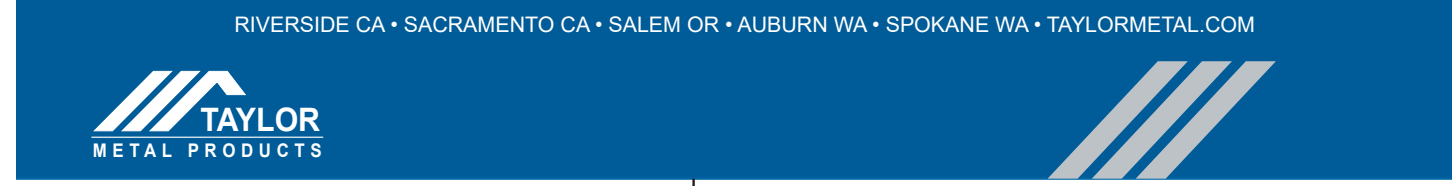


Craftsman Collection™

The TruExterior® Siding Craftsman Collection™ offers a variety of authentic, full-thickness profiles with bold, defined shapes and the natural aesthetic of traditional wood siding, all without the maintenance and upkeep associated with exterior wood products. Historically and architecturally accurate profiles—Channel, Channel Bevel, Cove/Dutch Lap, Nickel Gap, Shiplap and V-Rustic—are the ideal solution for homeowners who desire the look, feel and character of authentic wood siding while avoiding rotting, excessive swelling and termite attacks.

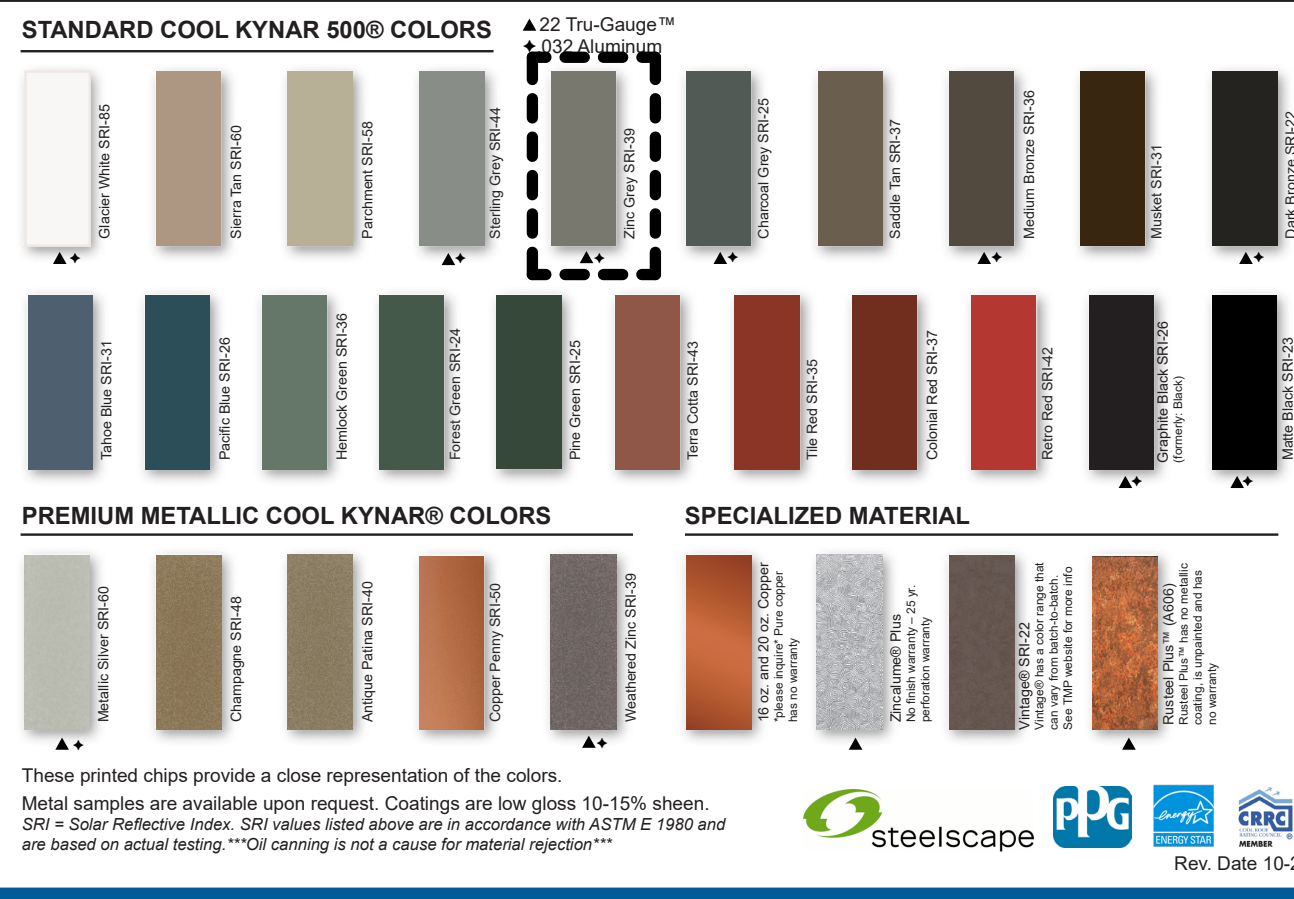
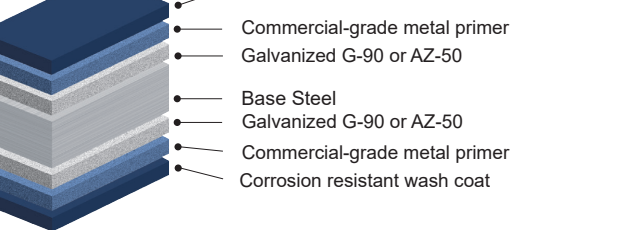


Pictured Top Left to Right: Channel Bevel, Nickel Gap
 Pictured Bottom Left to Right: Nickel Gap, Channel Bevel



- MATERIAL SPECIFICATIONS**
- 24 Tru-Gauge™ Kynar 500® Painted Steel
 - 22 Tru-Gauge™ Kynar 500® Painted Steel
 - .032" Kynar 500® Painted Aluminum
 - 24 Tru-Gauge™ G-90 Galvanized or AZ-50
 - 24 and 22 Tru-Gauge™ bare Zincalume® Plus AZ-55 (No finish warranty – 25 yr. perforation warranty)
 - G-90 Galvanized or AZ-50
 - .040" Kynar 500® Painted Aluminum (please inquire)
 - 24 Tru-Gauge™ Bonderized
 - 22 gauge Rusteel Plus™ (A606)
 - 16 OZ & 20 OZ Real Copper
 - Kynar 500® and substrate testing data available (See website)

- FINISHES**
- 21 Standard Colors, 5 Metallic Colors and 4 Specialized Colors
 - Kynar 500® Paint System - the ultimate in exterior durability and color retention
 - "Cool" color pigments are specially designed to reflect infrared light, reducing heat gain to dwelling, and conform with ENERGY STAR® criteria
 - Superior quality, two coat, 70% resin finish, applied at a 1 mil. thickness
 - 40 year residential paint warranty
 - 20 and 30 year commercial paint warranty; Contact TMP for warranty specifications
 - "Oil Canning" is an inherent characteristic of roof and wall products, and not a defect, which is not a cause for panel rejection



These printed chips provide a close representation of the colors. Metal samples are available upon request. Coatings are low gloss 10-15% sheen. SRI = Solar Reflective Index. SRI values listed above are in accordance with ASTM E 1980 and are based on actual testing. "Oil Canning" is not a cause for material rejection. Rev. Date 10-23

VERTICAL ENGINEERED WOOD SIDING



interlock

These and RENO pavers are popular for their low price point and great aesthetic. Both have a chamfered/straight edge with a small joint spacer and are ideal for all applications including vehicular.

One pallet system:
 - 4.975" W x 8.875" D x 2.375" H
 - 8.875" W x 8.875" D x 2.375" H
 - 14.75" W x 8.875" D x 2.375" H



See page 36/37 for patterns. Refer to actual product samples when making site selection.



CRAFTSMAN COLLECTION™ SIDING PRODUCT DATA SHEET

- 1. Certificates and Listings**
- IBC/IRC Codes: ICC-ES ACE89, CCR9 0300
 - Texas Department of Insurance (TDI): EC-92
 - Florida Building Codes (FBC): 2020 FL 17285
 - California Building Code (CBC): 2019
 - Wildfire Urban Interface (WUI): CA SFM 12-7A-1, 8140-2134-0105
 - Pre-Consumer Recycled Content: SCS Global Certification, Minimum 70%

- 2. Properties**
- Density: ASTM C 1185, 40-50 lb./ft³
 - Flexural Strength: ASTM C 1185, > 1600 psi
 - Coefficient of Linear Expansion: ASTM D 6341, < 0.000014 in. / (in.·°F)
 - Impact Resistance: ASTM D 6110, > 50 in.

- 3. Performance**
- Fungi Rot: AWPA E10, Brown Rot-Negligible Loss, White Rot-Negligible Loss
 - Termite Resistance: AWPA E1, > 9.0
 - Water Absorption: ASTM D 570, < 1.5%
 - Flame Spread Index: ASTM E 84, < 200

- 4. Manufacturing Tolerances**
- Width: ± 1/16 in.
 - Thickness: ± 1/16 in.
 - Length: +2.0 / -0.0 in.

Westlake
 Royal Building Products™
 WestlakeRoyalBuildingProducts.com
 © 2022 Westlake Royal Building Products

SIDING & ACCESSORIES
 TRIM & MOULDINGS
 ROOFING
 STONE
 WINDOWS
 OUTDOOR LIVING

T30048341 2/22



FIRE RATING TECHNICAL BULLETIN

The International Building Code (IBC) establishes a rating system for materials tested to ASTM E84 based on test results falling within certain ranges for Flame Spread Index and Smoke Developed Index (IBC 803.1.2). The code defines these classes as:

- Class A** = Flame spread index 0-25; smoke-developed index 0-450
- Class B** = Flame spread index 26-75; smoke-developed index 0-450
- Class C** = Flame spread index 76-200; smoke-developed index 0-450

Based on test results and these classification requirements, TruExterior® Siding and Trim are classified as Class A per ASTM E84.

| PERFORMANCE | TEST METHOD | RESULTS |
|-----------------|-------------|---------|
| Flame Spread | ASTM E84 | ≤ 25 |
| Smoke Developed | ASTM E84 | ≤ 450 |

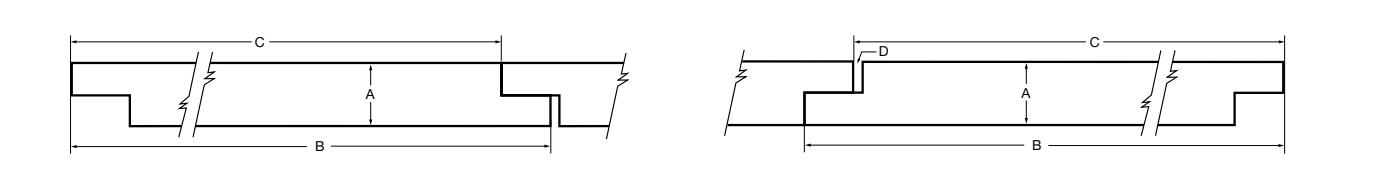
REVERSIBLE SHIPLAP-NICKEL GAP

TruExterior Siding & Trim's Reversible Shiplap/Nickel Gap siding panels offer two authentic, on-trend looks in one for increased versatility and convenience. The profile comes in two formats: one features smooth Nickel Gap on one side and woodgrain Shiplap on the other; the second combines woodgrain Nickel Gap with smooth Shiplap on the flip side. A rabbeted edge ensures panels install with authentic spacing depending on which side is installed—the tight joint appearance of Shiplap or the nickel-sized space of Nickel Gap. Four widths are available for 16 total profile combinations.

- Finish Options:**
- Smooth Nickel Gap with Woodgrain Shiplap
 - Woodgrain Nickel Gap with Smooth Shiplap



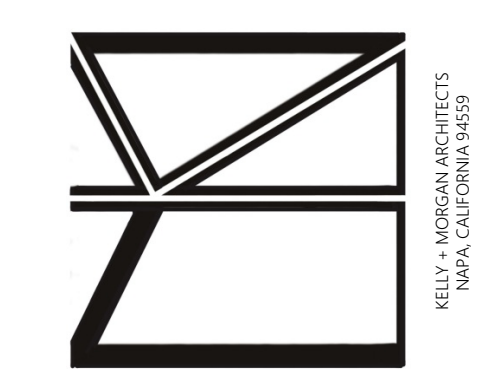
| SHIPLAP GAP SIDE | | | | NICKEL GAP SIDE | | | |
|------------------|----------------------|------------------|------------|-----------------|----------------------|------------------|------------|
| Nominal Size | Actual Thickness (A) | Actual Width (B) | Reveal (C) | Nominal Size | Actual Thickness (A) | Actual Width (B) | Reveal (C) |
| 1 x 4 | 11/16" | 3-1/2" | 3-3/32" | 1 x 4 | 11/16" | 3-1/2" | 3-3/32" |
| 1 x 6 | 11/16" | 5-1/2" | 5-3/32" | 1 x 6 | 11/16" | 5-1/2" | 5-3/32" |
| 1 x 8 | 11/16" | 7-1/4" | 6-13/16" | 1 x 8 | 11/16" | 7-1/4" | 6-13/16" |
| 1 x 10 | 11/16" | 9-1/4" | 8-13/16" | 1 x 10 | 11/16" | 9-1/4" | 8-13/16" |



TruExterior Siding comes pre-primed and does require paint.

Westlake
 Royal Building Products™
 © 2023 Westlake Royal Building Products

T135991 6/23



SILVERADO GROVE

1500 FIRST STE. SUITE 100
 NAPA, CA 94559
 CITY OF NAPA RESUMIT #8907048
 NAPA COUNTY ENV. HEALTH-PLAN CHECK ID: 117284

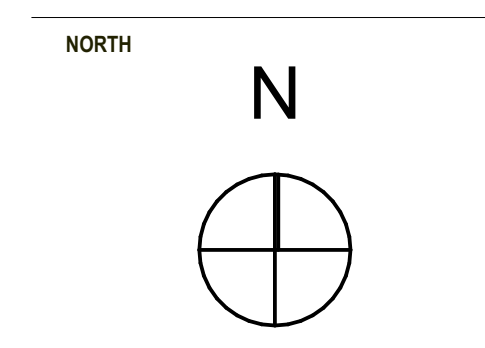


REVISIONS

| NO. | DATE | DESCRIPTION |
|-----|------------|------------------|
| 1 | MARCH 2023 | COORDINATION SET |

NOTES:

- All dimensions are shown to F.O. stud unless otherwise noted.
- Original Print: 24x36 Arch D



SCALE:
EXTERIOR MATERIAL SPECIFICATIONS

PS.9

SHEET

NOTE: ALL MATERIALS TO BE CLASS "A" AND ASSEMBLED TO ACCOMMODATE MIN FLAME SPREAD REQUIREMENTS PER CBC CH 7A AND CITY OF NAPA OFFICE OF FIRE PREVENTION.

OCTOBER 11, 2024 AUTOCAMP IMAGERY – BOH BUILDINGS

