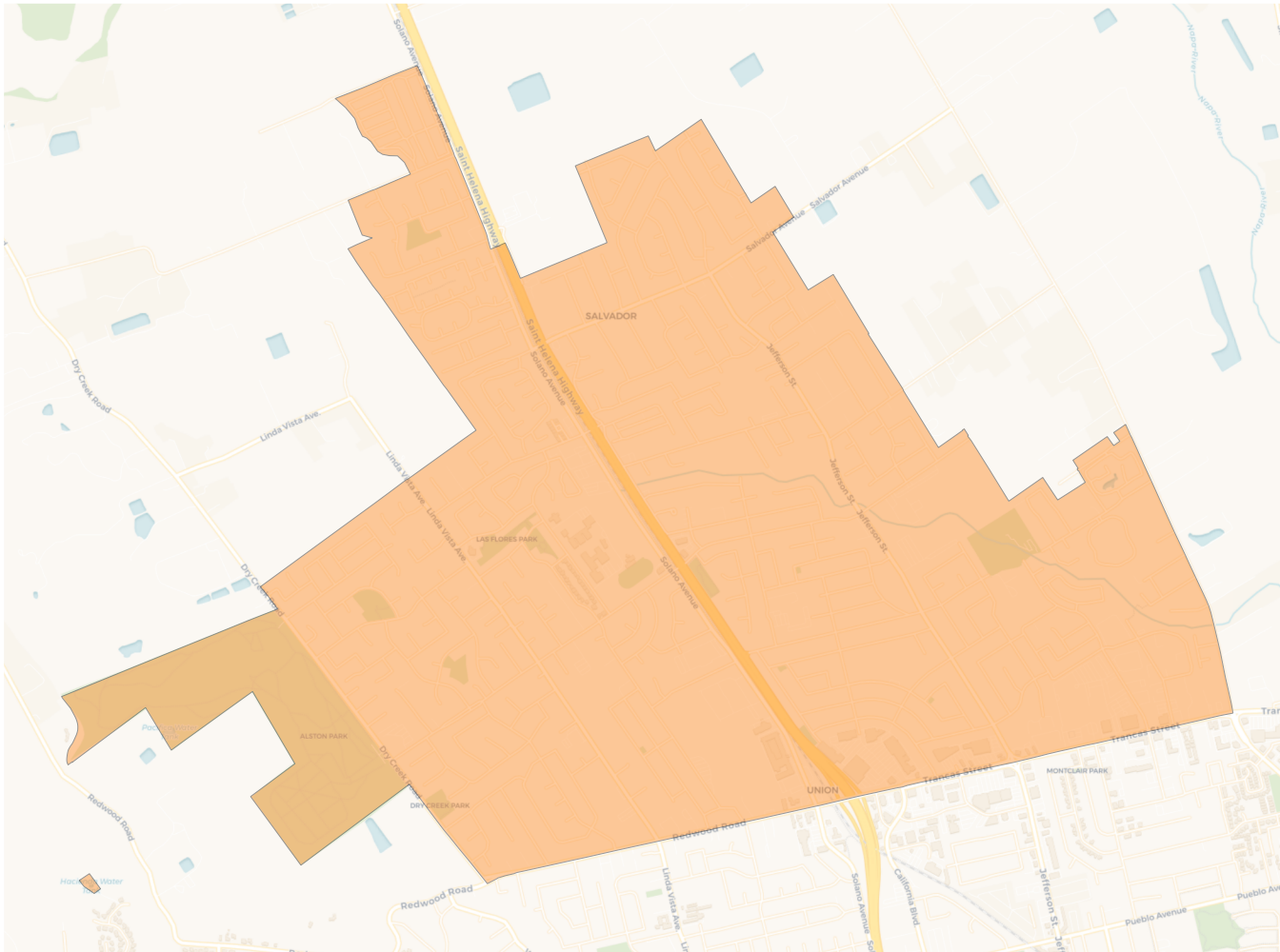
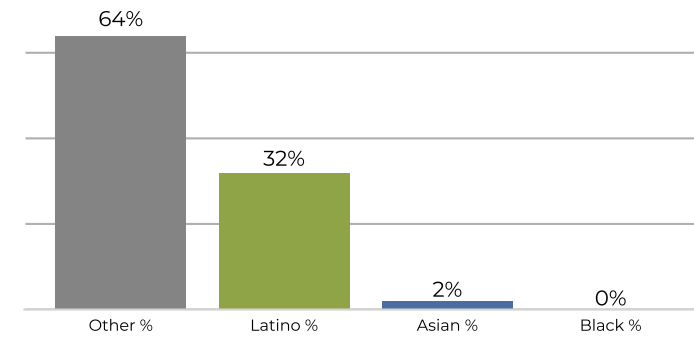
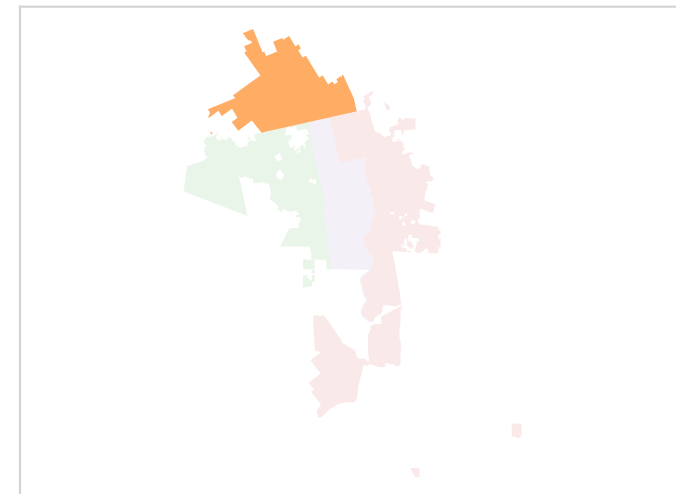
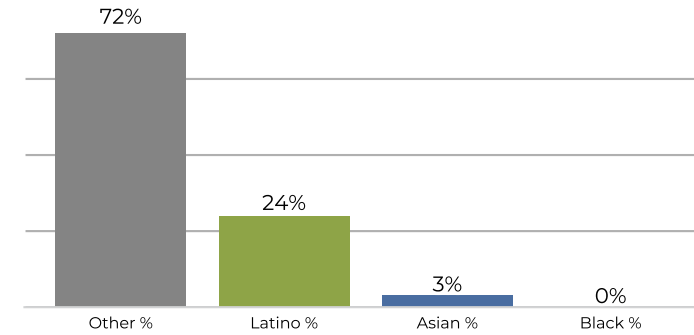


2020 Census

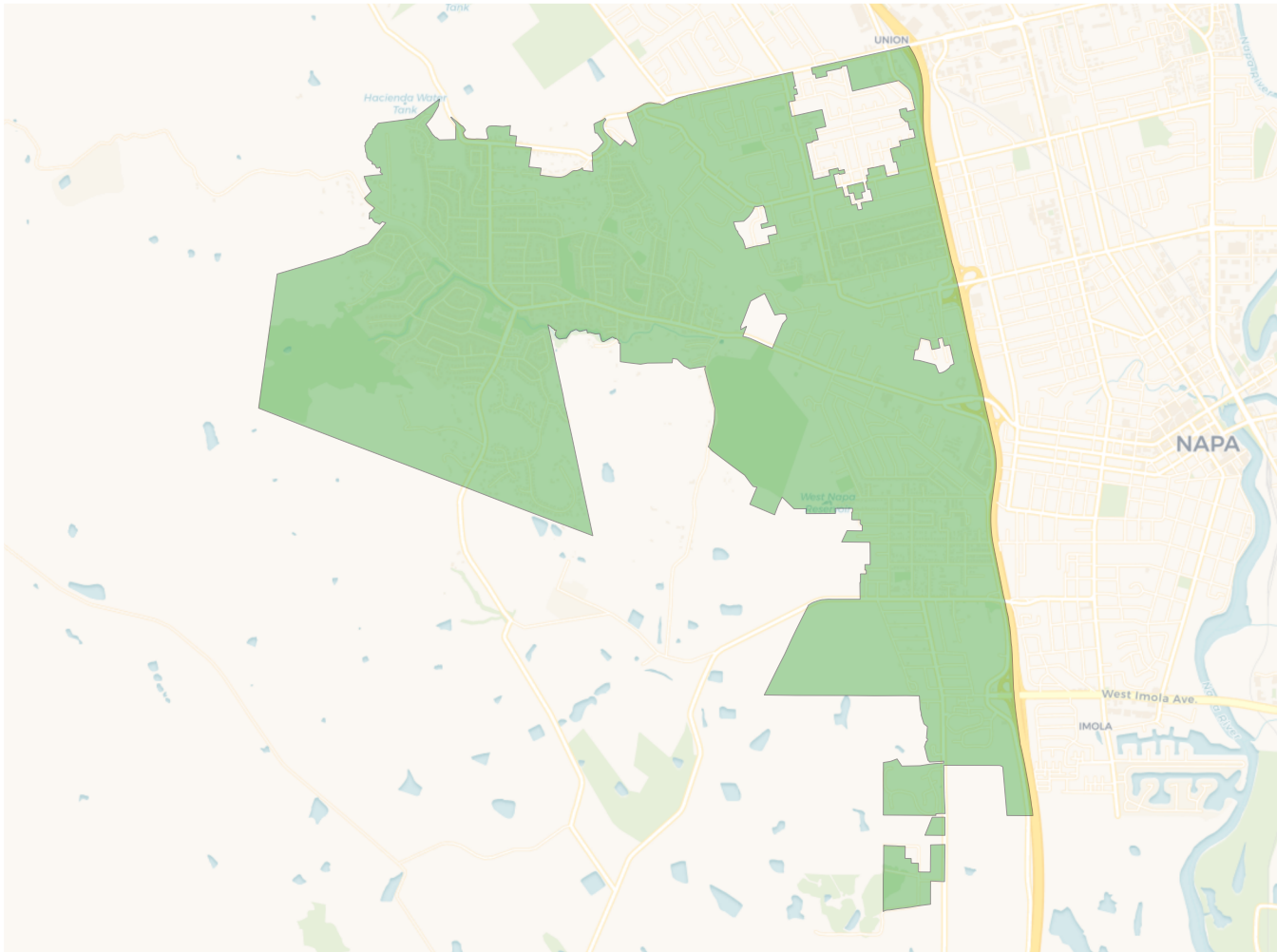
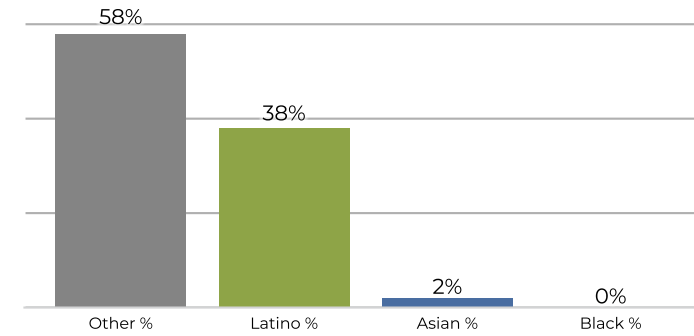
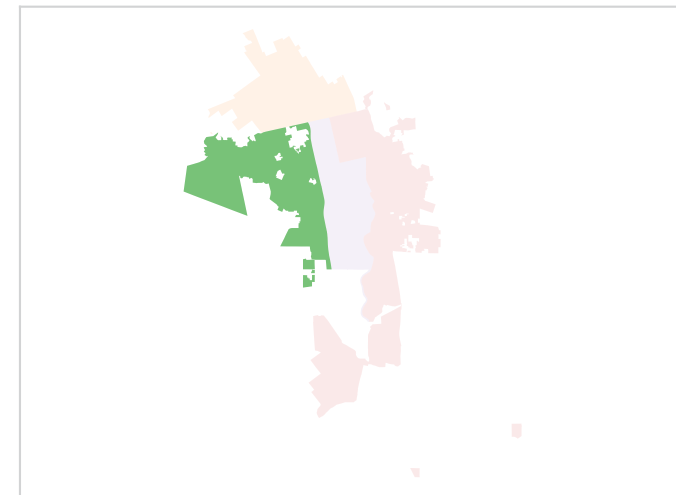
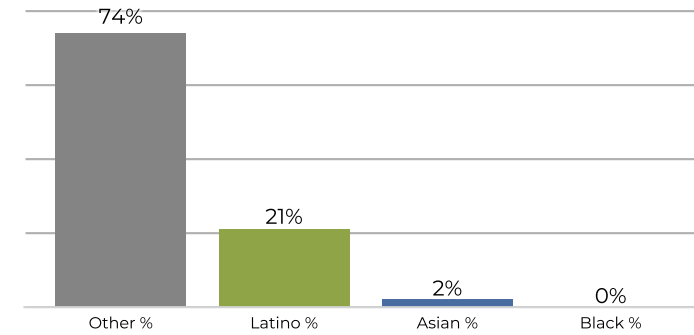
	1	2	3	4
Population	19,664	20,520	20,125	19,029
Deviation	-170	686	291	-805
Deviation %	-0.9%	3.5%	1.5%	-4.1%
Other	12,638	12,077	10,643	9,751
Other %	64.3%	58.9%	52.9%	51.2%
Latino	6,335	7,920	8,717	8,650
Latino %	32.2%	38.6%	43.3%	45.5%
Asian	579	415	587	440
Asian %	2.9%	2.0%	2.9%	2.3%
Black	112	108	178	188
Black %	0.6%	0.5%	0.9%	1.0%

Citizen Voting Age Population (CVAP)

	1	2	3	4
Total CVAP	13,890	13,245	12,800	11,300
Other CVAP	10,010	9,913	8,832	7,916
Other CVAP %	72.1%	74.8%	69.0%	70.1%
Latino CVAP	3,342	2,853	3,256	3,111
Latino CVAP %	24.1%	21.5%	25.4%	27.5%
Asian CVAP	505	364	624	96
Asian CVAP %	3.6%	2.8%	4.9%	0.8%
Black CVAP	33	115	89	177
Black CVAP %	0.2%	0.9%	0.7%	1.6%

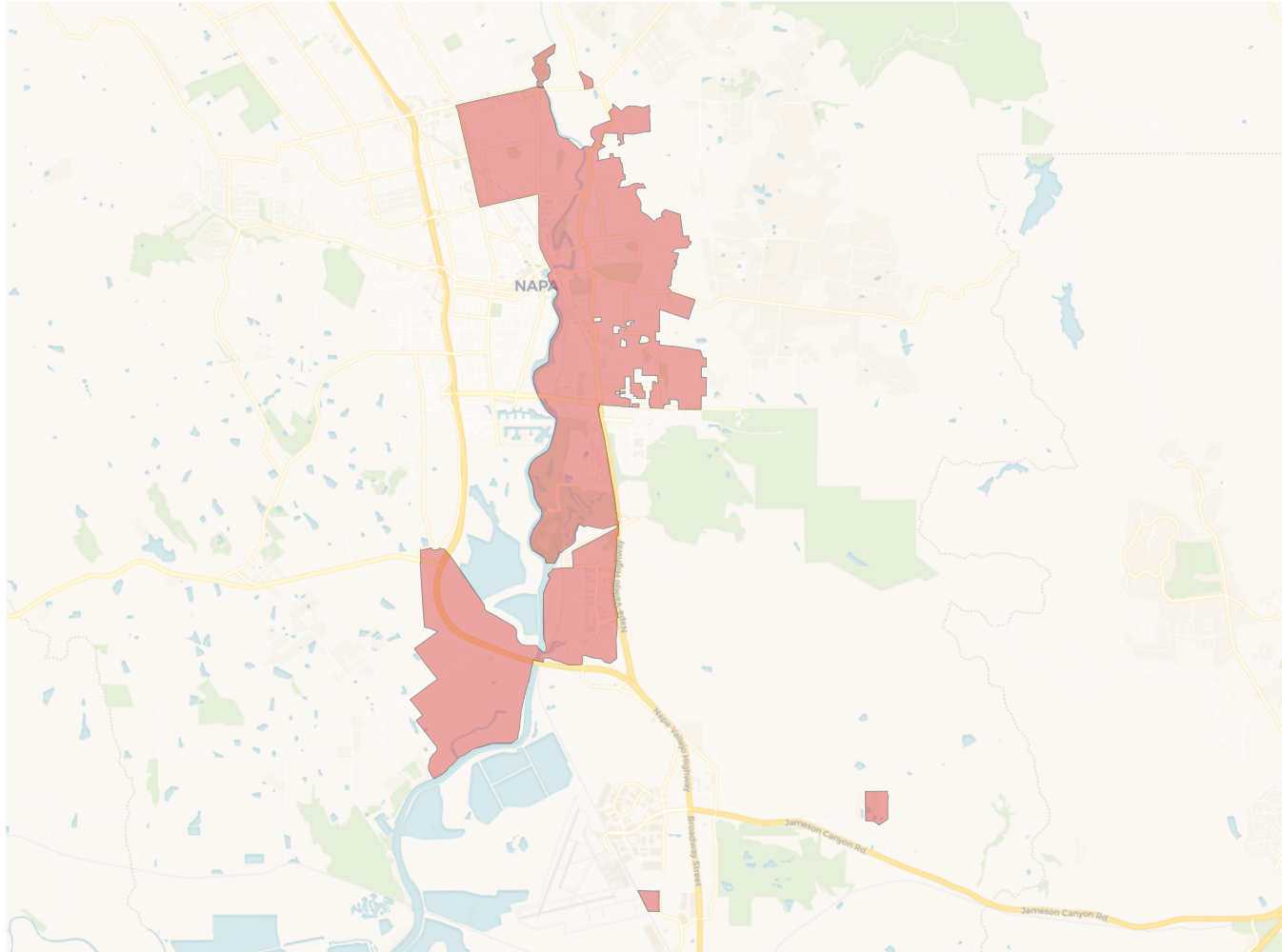
District 1

2020 Census

Citizen Voting Age Population


Population	Deviation	Deviation %	Other	Other %	Latino	Latino %	Asian	Asian %	Black	Black %
19,664	-170	-0.9%	12,638	64.3%	6,335	32.2%	579	2.9%	112	0.6%
Total CVAP	Other CVAP	Other CVAP %	Latino CVAP	Latino CVAP %	Asian CVAP	Asian CVAP %	Black CVAP	Black CVAP %		
13,890	10,010	72.1%	3,342	24.1%	505	3.6%	33	0.2%		

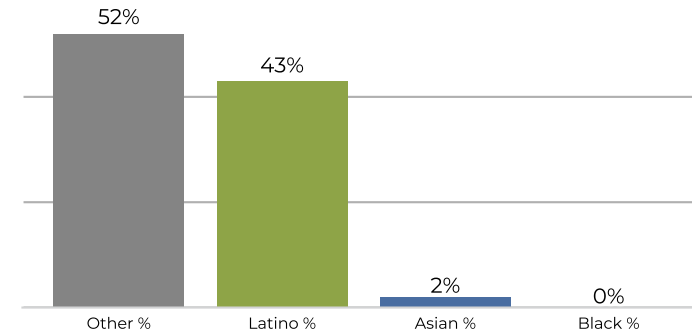
District 2

2020 Census

Citizen Voting Age Population


Population	Deviation	Deviation %	Other	Other %	Latino	Latino %	Asian	Asian %	Black	Black %
20,520	686	3.5%	12,077	58.9%	7,920	38.6%	415	2.0%	108	0.5%
Total CVAP	Other CVAP	Other CVAP %	Latino CVAP	Latino CVAP %	Asian CVAP	Asian CVAP %	Black CVAP	Black CVAP %		
13,245	9,913	74.8%	2,853	21.5%	364	2.8%	115	0.9%		

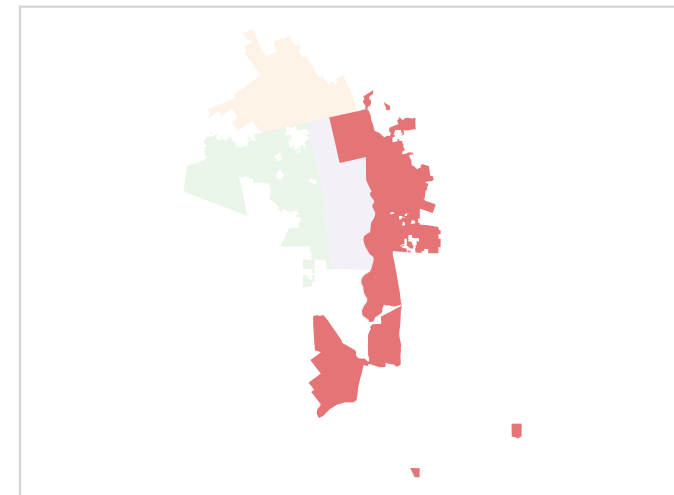
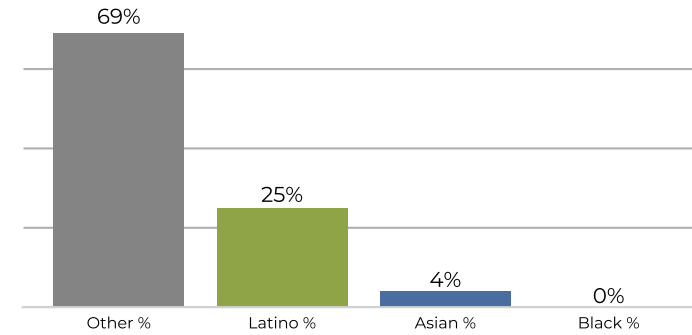
District 3



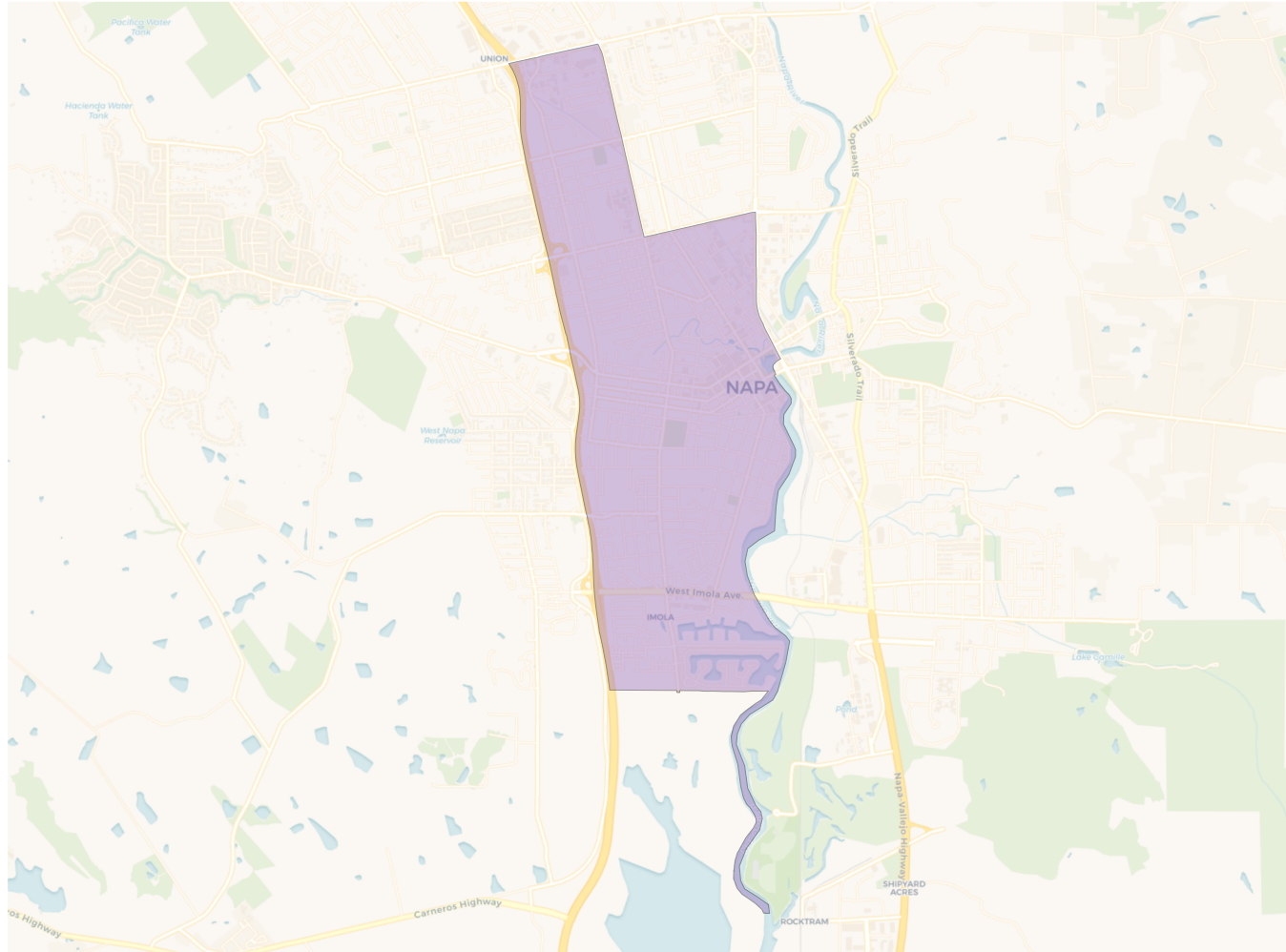
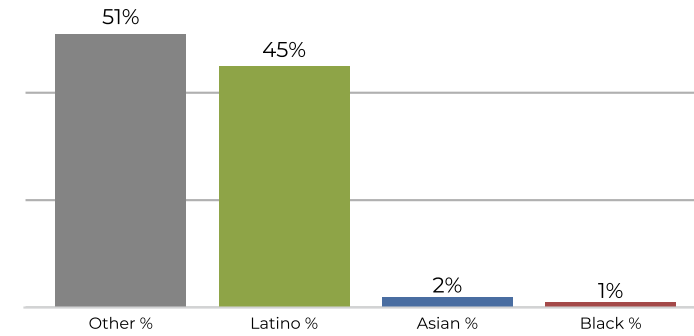
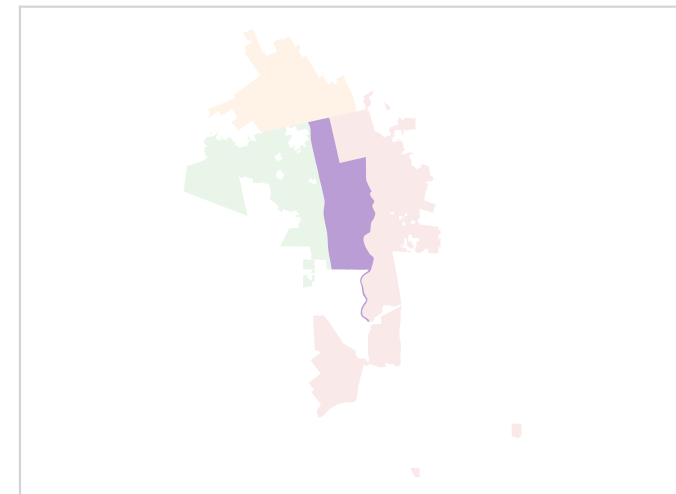
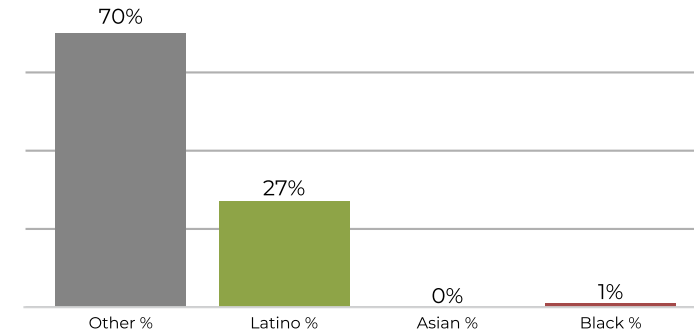
2020 Census



Citizen Voting Age Population



Population	Deviation	Deviation %	Other	Other %	Latino	Latino %	Asian	Asian %	Black	Black %
20,125	291	1.5%	10,643	52.9%	8,717	43.3%	587	2.9%	178	0.9%
Total CVAP	Other CVAP	Other CVAP %	Latino CVAP	Latino CVAP %	Asian CVAP	Asian CVAP %	Black CVAP	Black CVAP %		
12,800	8,832	69.0%	3,256	25.4%	624	4.9%	89	0.7%		

District 4

2020 Census

Citizen Voting Age Population


Population	Deviation	Deviation %	Other	Other %	Latino	Latino %	Asian	Asian %	Black	Black %
19,029	-805	-4.1%	9,751	51.2%	8,650	45.5%	440	2.3%	188	1.0%
Total CVAP	Other CVAP	Other CVAP %	Latino CVAP	Latino CVAP %	Asian CVAP	Asian CVAP %	Black CVAP	Black CVAP %		
11,300	7,916	70.1%	3,111	27.5%	96	0.8%	177	1.6%		