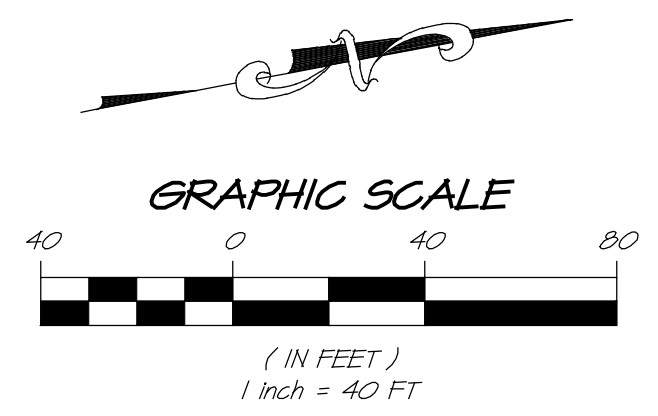


PROPERTY LINE TABLE				
NUMBER	RADIUS	DELTA	BEARING	LENGTH
C1	430.00	21°55'01"		164.49
C2	270.00	41°31'48"		145.71
L1			S35° 56' 32.43"W	132.07
L2			S14° 01' 30.97"W	311.08
L3			S55° 33' 18.61"W	451.13
L4			N21° 59' 50.10"W	152.29
L5			N34° 34' 43.76"E	27.45
L6			N3° 30' 06.57"E	70.61
L7			N18° 48' 19.98"E	47.13
L8			N54° 05' 07.15"E	35.24
L9			N21° 37' 44.84"E	30.55
L10			N51° 26' 06.39"E	61.37
L11			N33° 46' 21.60"E	37.62
L12			N18° 09' 03.25"W	82.68
L13			N58° 55' 18.49"W	69.43
L14			S50° 18' 17.06"W	13.99
L15			N50° 59' 43.08"W	113.37
L16			N15° 40' 41.11"E	16.52
L17			N8° 53' 46.40"W	45.99
L18			N0° 52' 11.87"W	145.31
L19			N58° 20' 12.92"W	42.35
L20			N1° 42' 35.20"W	76.03
L21			N43° 20' 50.01"E	95.85
L22			N39° 00' 35.46"E	115.54
L23			N27° 10' 38.23"E	16.70
L24			S83° 16' 00.34"E	710.62



NO.	DATE	REVISIONS	BY	APPRO

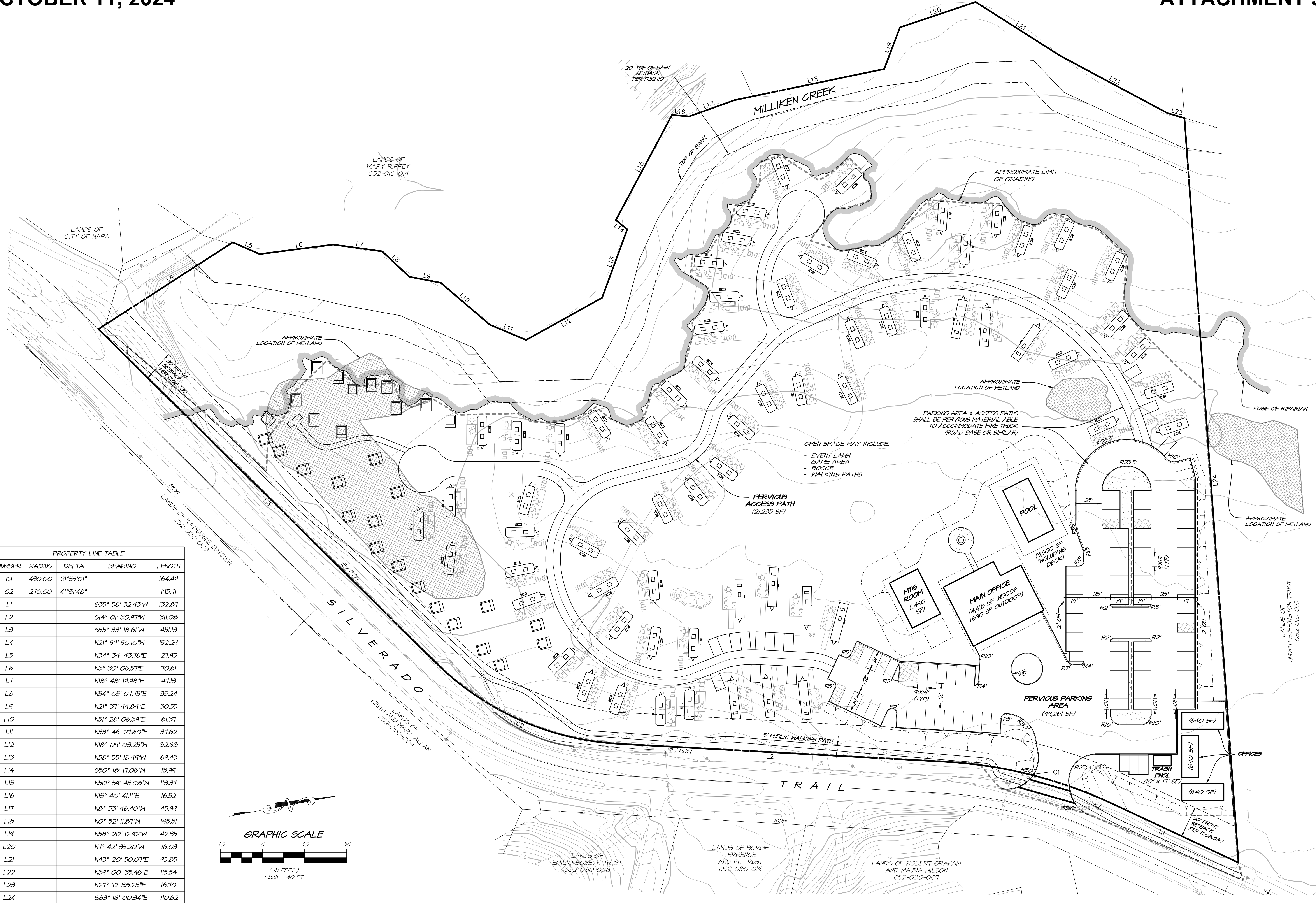
1515 FOURTH STREET
NAPA, CALIF. 94459
OFFICE 707/252-3301
+ www.rsa-civil.com

THE GRANGE CAMPGROUND SITE PLAN

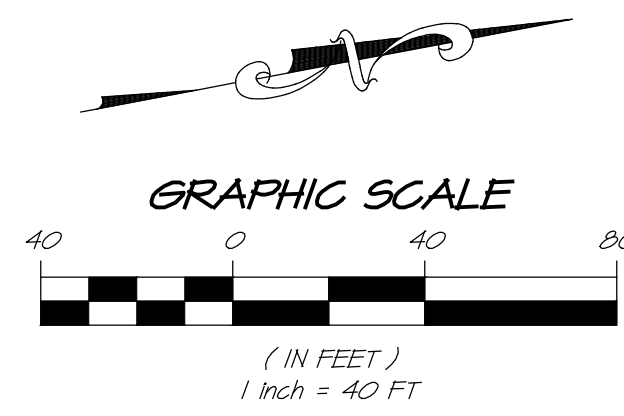
CALIFORNIA

NAPA

DATE	OCT 16, 2023
DRAWN	MM
DESIGNED	RAY
CHECKED	DMD
JOB NO.	4122075.0
SHEET NO.	UP1
1 OF 5 SHEETS	



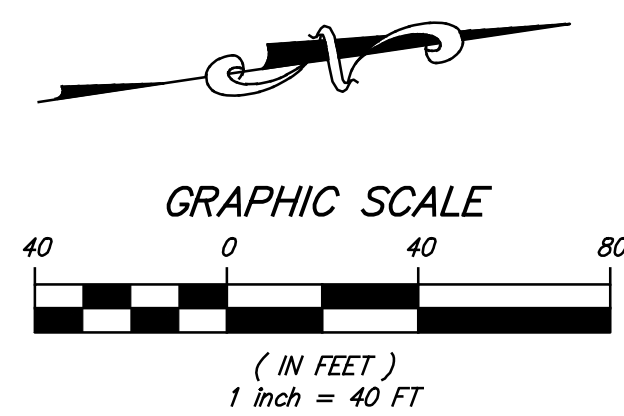
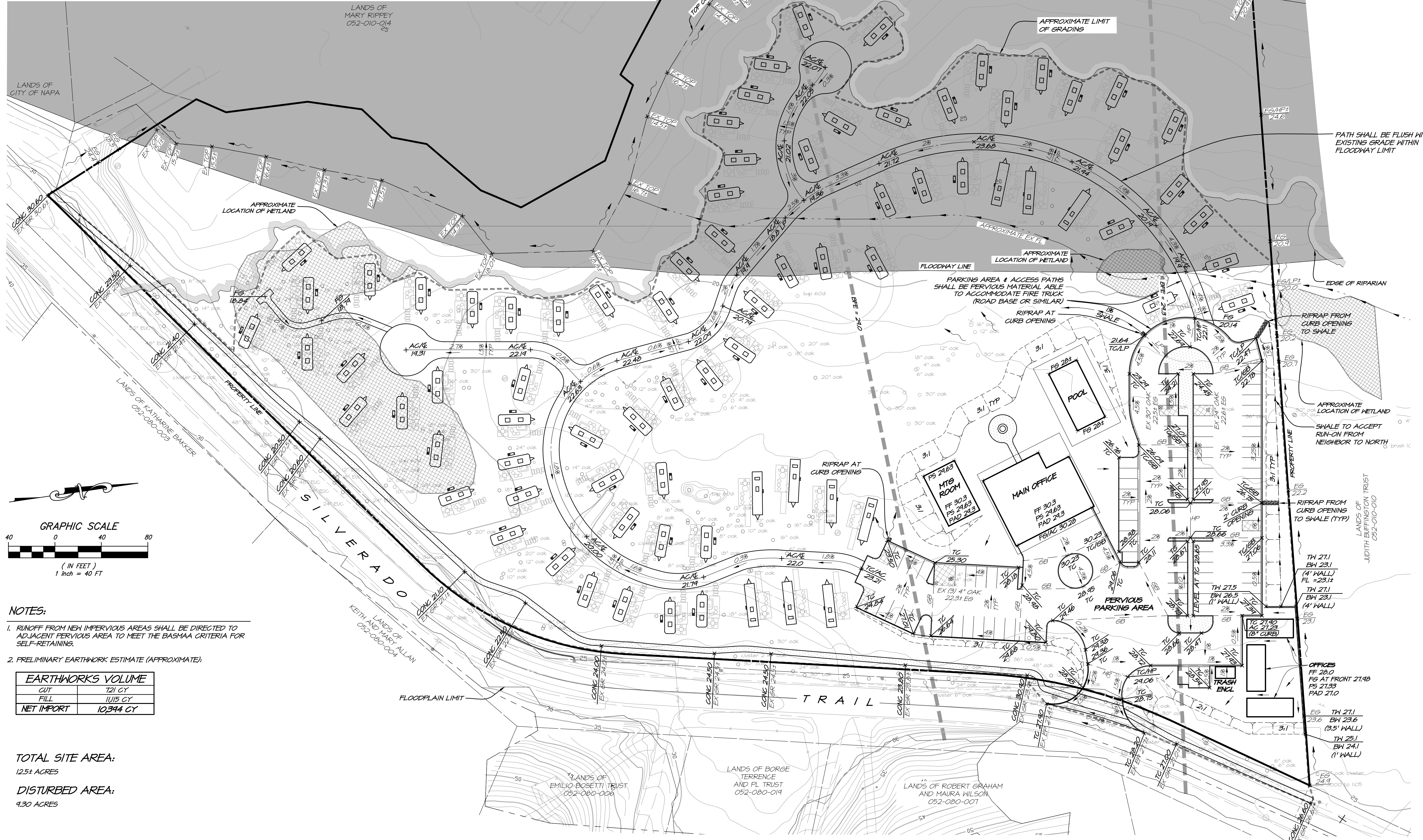
PROPERTY LINE TABLE				
NUMBER	RADIUS	DELTA	BEARING	LENGTH
C1	430.00	21°55'01"		164.44
C2	270.00	41°31'48"		145.71
L1			S35° 56' 32.43"W	132.07
L2			S14° 01' 30.97"W	311.08
L3			S55° 33' 18.61"W	451.13
L4			N21° 54' 50.10"W	152.24
L5			N34° 34' 43.76"E	27.45
L6			N3° 30' 06.57"E	70.61
L7			N18° 48' 19.48"E	47.13
L8			N54° 05' 07.15"E	35.24
L9			N21° 37' 44.84"E	30.55
L10			N51° 26' 06.34"E	61.37
L11			N33° 46' 21.60"E	37.62
L12			N18° 04' 03.25"W	82.68
L13			N58° 55' 18.44"W	64.43
L14			S50° 18' 17.06"W	13.99
L15			N50° 54' 43.08"W	113.37
L16			N15° 40' 41.11"E	16.52
L17			N8° 53' 46.40"W	45.99
L18			N0° 52' 11.87"W	145.31
L19			N58° 20' 12.92"W	42.35
L20			N1° 42' 35.20"W	76.03
L21			N43° 20' 50.01"E	95.85
L22			N34° 00' 35.46"E	115.54
L23			N27° 10' 38.23"E	16.70
L24			S83° 16' 00.34"E	710.62



<p>RSA+ CONSULTING CIVIL ENGINEERS + SURVEYORS + ARCHITECTS</p>	<p>1515 FOURTH STREET NAPA, CALIF. 94959 OFFICE 707/252-3301 + www.rsaplus.com</p>
<p>THE GRANGE CAMPGROUND 100 UNIT SITE PLAN - PHASE 2</p>	
<p>CALIFORNIA NAPA</p>	
<p>REGISTERED PROFESSIONAL ENGINEER No. 73257 Exp. 12.31.2024 CIVIL ENGINEER STATE OF CALIFORNIA</p>	
<p>DATE: JANUARY 30, 2024</p>	
<p>DRAWN: HMM</p>	
<p>DESIGNED: RAY</p>	
<p>CHECKED: DMD</p>	
<p>JOB NO. 4122075.0</p>	
<p>SHEET NO. PH 2</p>	
<p>1 OF 5 SHEETS</p>	

FLOOD NOTES:

1. ALL NEW IMPROVEMENTS SHOWN IN FLOODWAY WILL BE AT OR BELOW EXISTING GRADE TO NOT IMPACT FLOODWAY.
2. CAMPING UNITS SHOWN WITHIN THE FLOODWAY WILL BE REMOVED AND RELOCATED PRIOR TO FLOOD EVENT. ON-SITE STORAGE IN PARKING AREA OUTSIDE OF FLOODWAY PORTION OF SITE IS THE PROPOSED LOCATION OF RELOCATION.
3. A FLOOD EVACUATION PLAN WILL BE CREATED PRIOR TO APPROVAL OF PERMITS FOR PROJECT.



- NOTES:**
1. RUNOFF FROM NEW IMPERVIOUS AREAS SHALL BE DIRECTED TO ADJACENT PERVIOUS AREA TO MEET THE BASMAA CRITERIA FOR SELF-RETAINING.
 2. PRELIMINARY EARTHWORK ESTIMATE (APPROXIMATE):

EARTHWORKS VOLUME	
CUT	121 CY
FILL	11115 CY
NET IMPORT	10394 CY

TOTAL SITE AREA:
12.5± ACRES

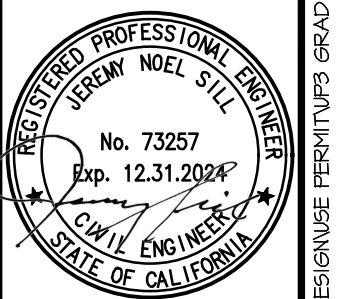
DISTURBED AREA:
9.30 ACRES

NO.	DATE	REVISIONS	BY	APPD

RSA+
RS&T CONSULTING CIVIL ENGINEERS + SURVEYORS • (1986)

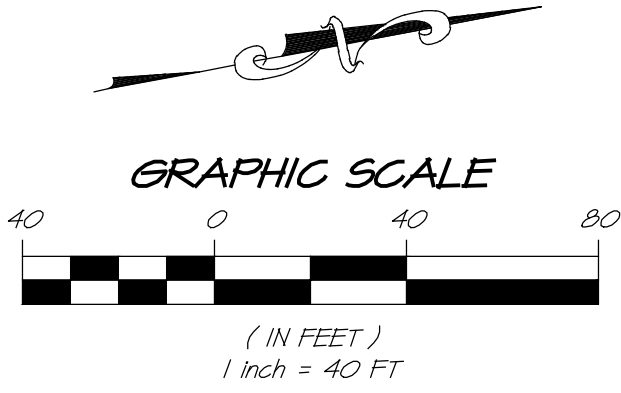
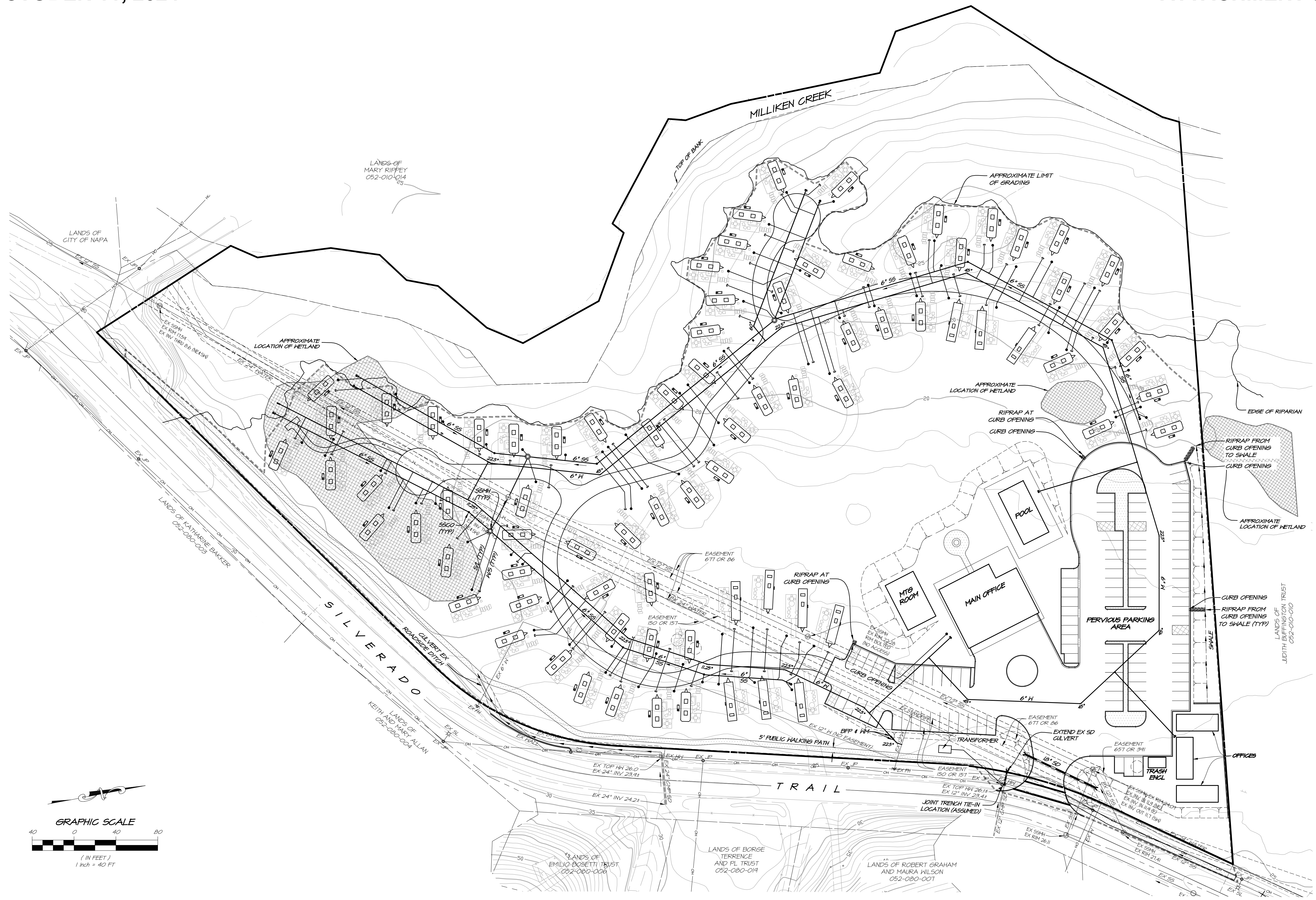
1515 FOURTH STREET
NAPA, CALIF. 94559
OFFICE (707) 252-3301
WWW.RSACHIL.COM

**THE GRANGE CAMPGROUND
GRADING & DRAINAGE PLAN**
CALIFORNIA
NAPA



DATE	OCT 16, 2023
DRAWN	MM
DESIGNED	RAY
CHECKED	DMD
JOB NO.	4122075.0

SHEET NO.
UP3
3 OF 5 SHEETS



NO.	DATE	REVISIONS	BY	APPD

RSA+
 1515 FOURTH STREET
 NAPA, CALIF. 94559
 OFFICE (707) 252-3301
 + www.rsacivil.com +

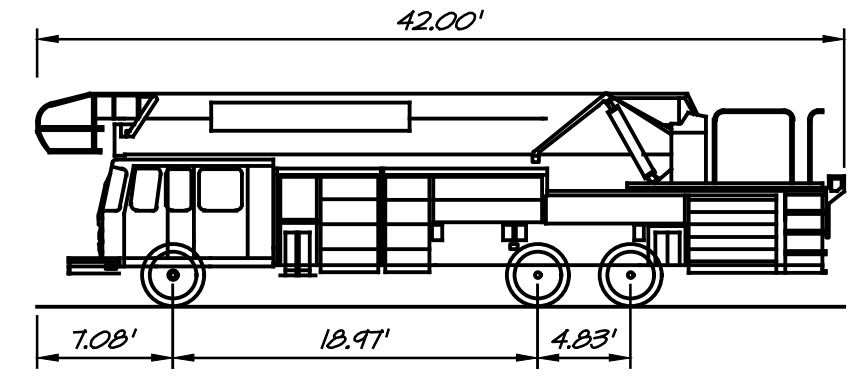
RSA+ CONSULTING CIVIL ENGINEERS + SURVEYORS + 1990

**THE GRANGE CAMPGROUND
 UTILITY PLAN**
 CALIFORNIA
 NAPA

REGISTERED PROFESSIONAL ENGINEER
 NOEL STELLER
 No. 73257
 Exp. 12/31/2024
 CIVIL ENGINEER
 STATE OF CALIFORNIA

DATE	OCT 16, 2023
DRAWN	MM
DESIGNED	RAY
CHECKED	DMD
JOB NO.	4122075.0

SHEET NO.
UP4
 4 OF 5 SHEETS



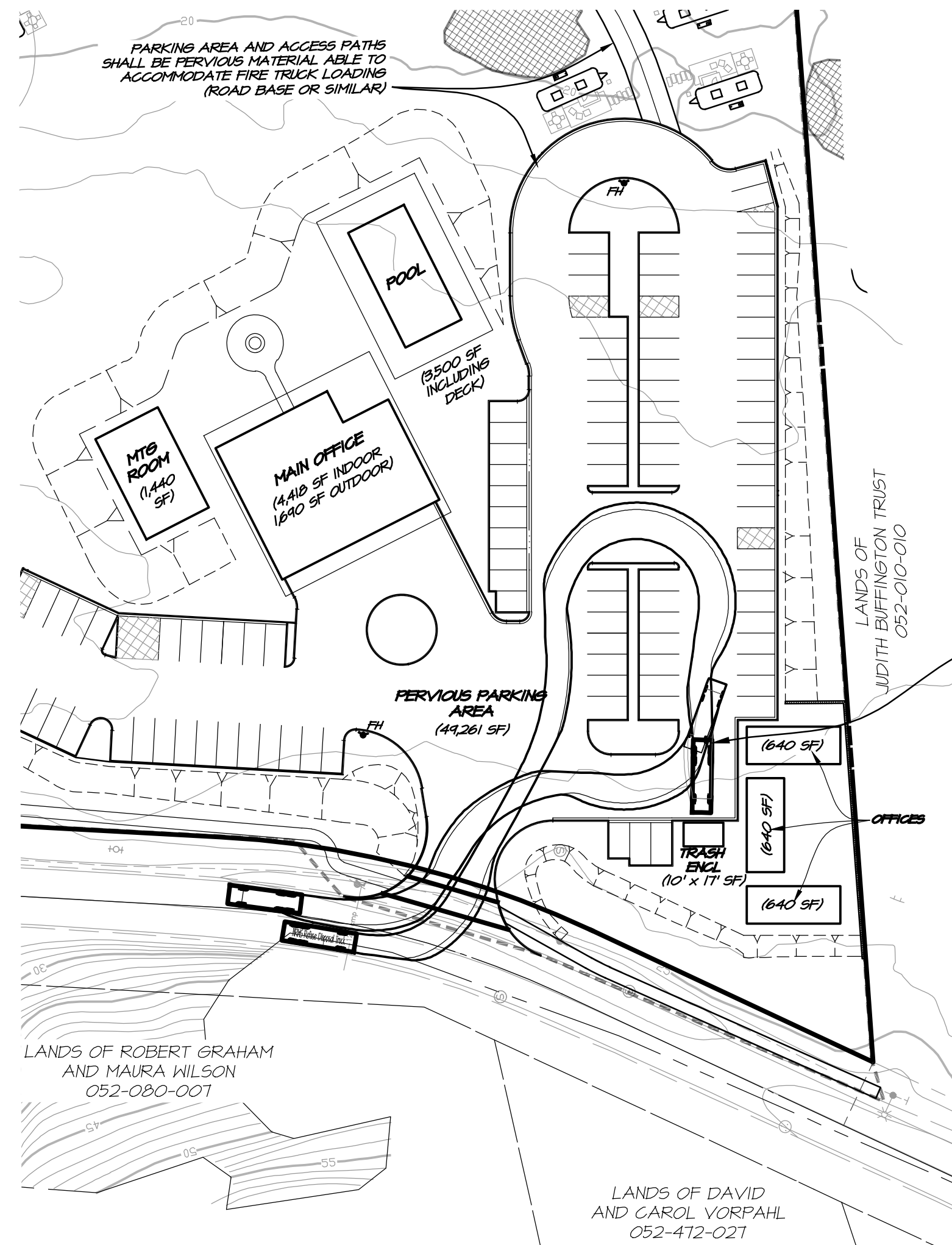
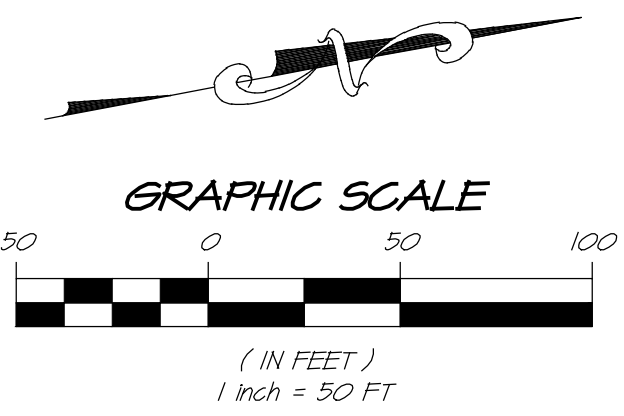
Napa City Ladder Truck
 Napa City Ladder Truck
 Overall Length 42.00'
 Overall Width 10.00'
 Overall Body Height 11.07'
 Min Body Ground Clearance 1.62'
 Max Track Width 9.81'
 Lock-to-lock time 6.00 seconds
 Max Wheel Angle 41.20°

CITY OF NAPA STANDARD LADDER FIRE TRUCK
 SCALE: 1" = 10'

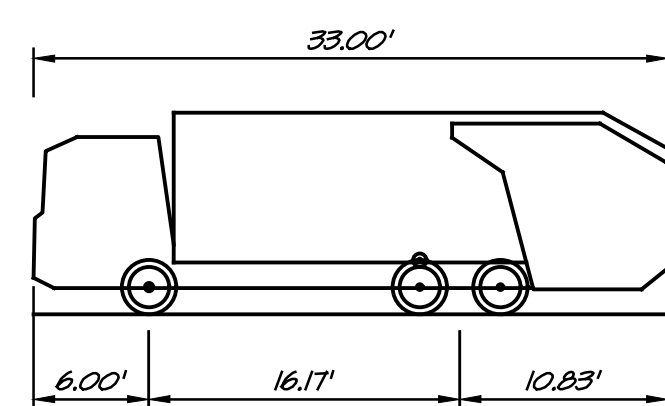
3
UP5

LEGEND

- FH FIRE HYDRANT (PROPOSED)
- FIRE HYDRANT (EXISTING)

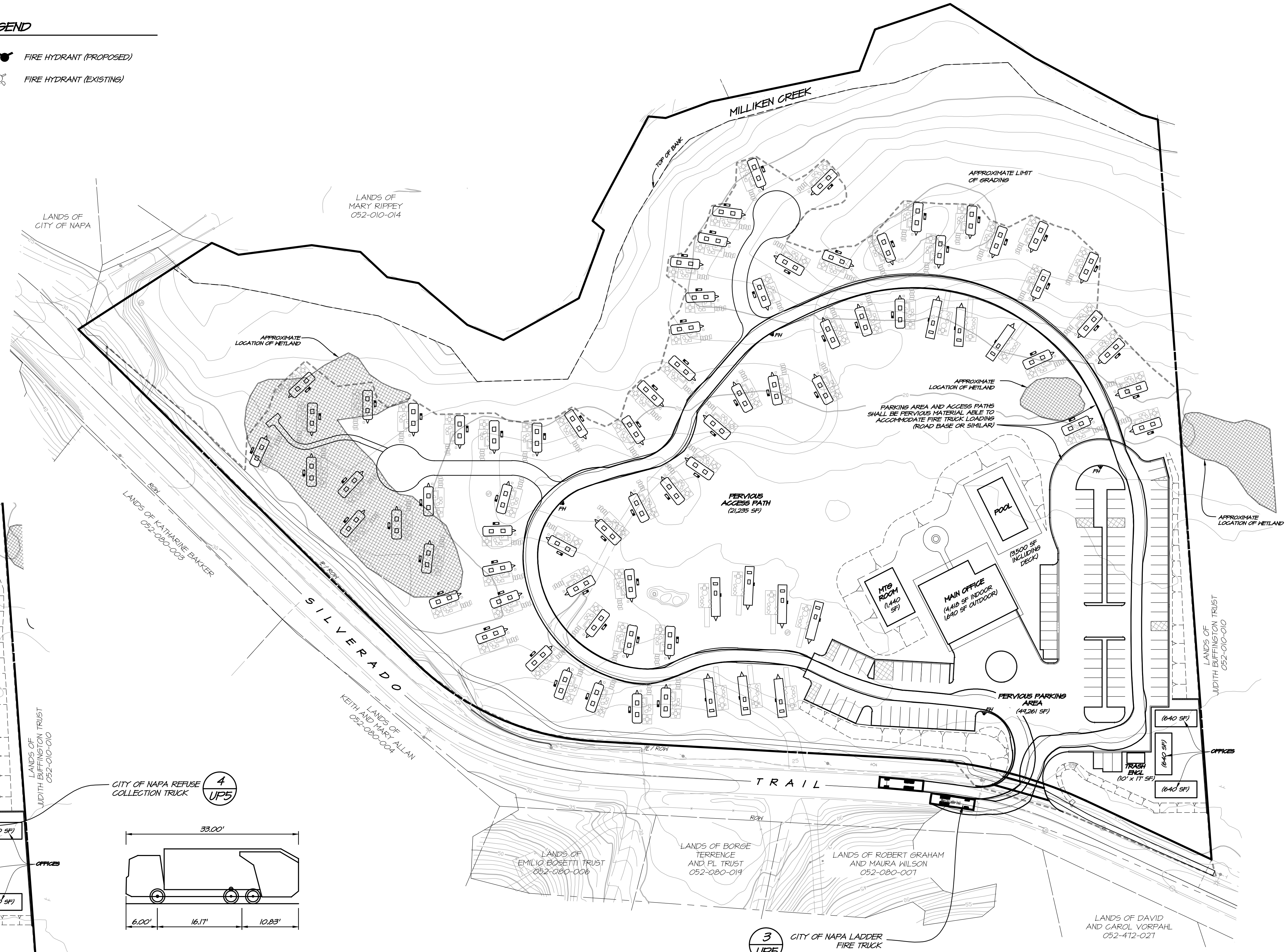


2
UP5
COLLECTION VEHICLE TURNING TEMPLATE
 SCALE: 1" = 50'



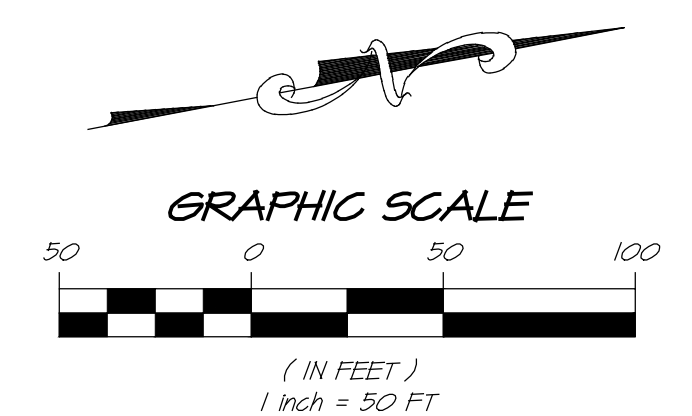
NRNS Refuse Disposal Truck
 Overall Length 33.00'
 Overall Width 11.00'
 Overall Body Height 10.48'
 Min Body Ground Clearance 2.53'
 Track Width 10.00'
 Lock-to-lock time 4.00 seconds
 Wall to Wall Turning Radius 34.00'

4
UP5
CITY OF NAPA STANDARD REFUSE COLLECTION TRUCK
 SCALE: 1" = 10'



3
UP5
CITY OF NAPA LADDER FIRE TRUCK

1
UP5
FIRE TRUCK TURNING DIAGRAM
 SCALE: 1" = 50'



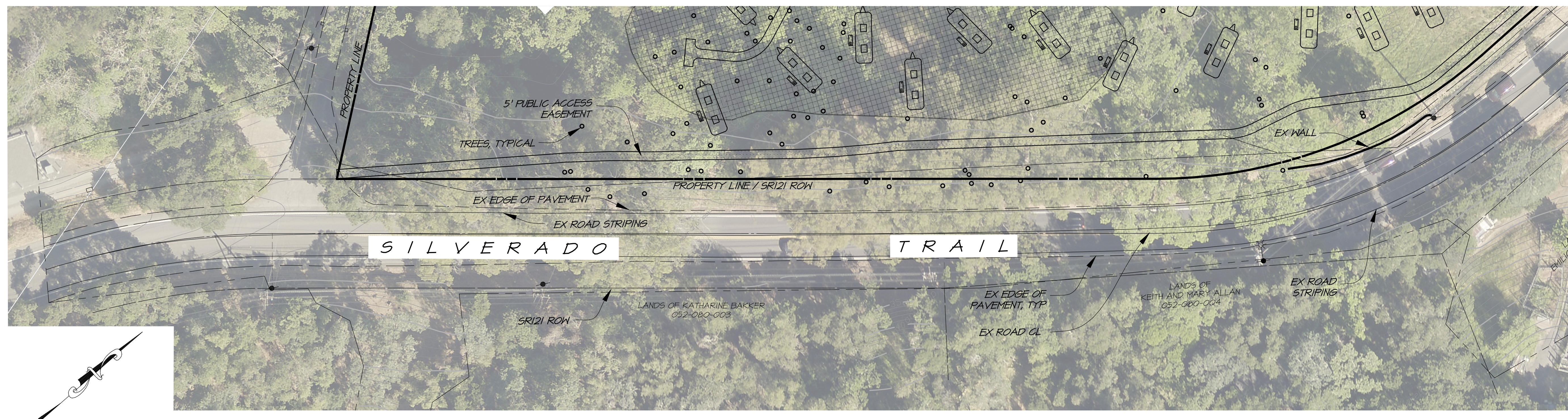
NO.	DATE	REVISIONS	BY

RSA+
 1515 FOURTH STREET
 NAPA, CALIF. 94559
 OFFICE (707) 252-3301
 + www.rsacivil.com +
 RSA+ CONSULTING CIVIL ENGINEERS + SURVEYORS + (1986)

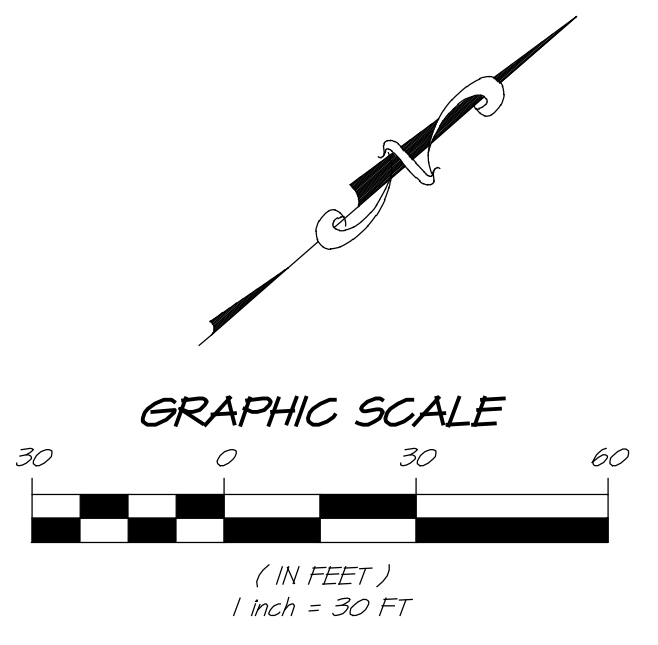
THE GRANGE CAMPGROUND CIRCULATION PLAN
 CALIFORNIA
 NAPA

REGISTERED PROFESSIONAL CIVIL ENGINEER
 JEREMY NEEL STIL
 No. 73257
 Exp. 12-31-2024
 CIVIL ENGINEER
 STATE OF CALIFORNIA

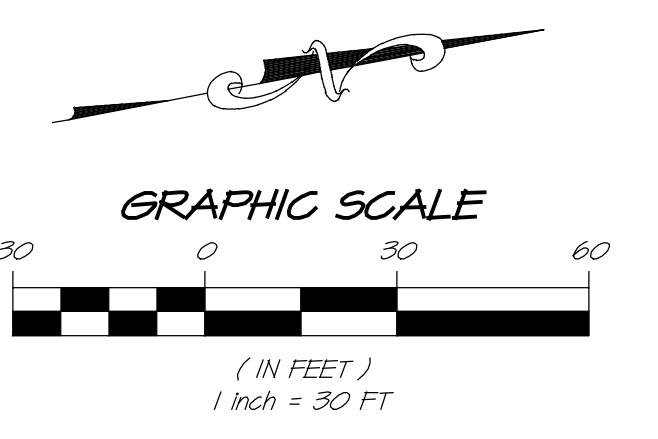
DATE	JANUARY 30, 2024
DRAWN	MM
DESIGNED	RAY
CHECKED	DMD
JOB NO.	4122075.0
SHEET NO.	UP5
	5 OF 5 SHEETS



MATCH LINE - SEE PLAN BELOW



MATCH LINE - SEE PLAN ABOVE



NO.	DATE	REVISIONS	BY	APPD

RSA+
 1815 FOURTH STREET
 NAPA, CALIF. 94559
 OFFICE 707/252-3301
 + www.rsacivil.com +
 RSA+ CONSULTING CIVIL ENGINEERS + SURVEYORS + 1981

**THE GRANGE CAMPGROUND
 SILVERADO TRAIL FRONTAGE**
 CALIFORNIA
 NAPA

REGISTERED PROFESSIONAL ENGINEER
 GREAT GREAT NOEL SILL
 No. 73257
 Exp. 12.31.2024
 CIVIL ENGINEER
 STATE OF CALIFORNIA

DATE	JANUARY 5, 2024
DRAWN	MROY
DESIGNED	
CHECKED	DMD
JOB NO.	4122075.0

SHEET NO.
EXH
 1 OF 1 SHEETS