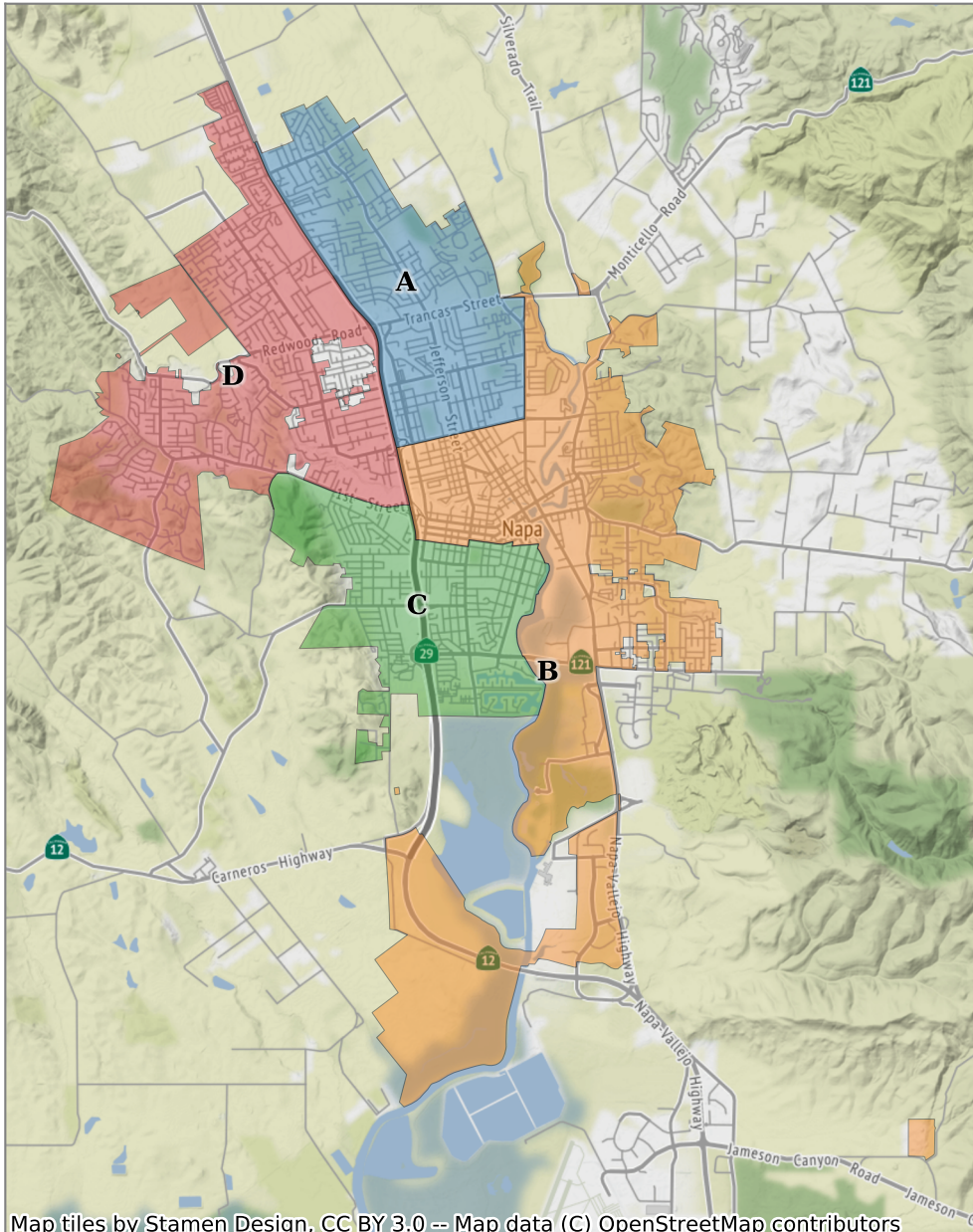


City of Napa

Plan C

District Overview



Base 2010 Census

	A	B	C	D
Population	20,145	18,358	18,532	19,874
Deviation	918	-869	-695	647
Deviation %	4.8%	-4.5%	-3.6%	3.4%
No Eth	11,184	10,646	8,910	15,012
No Eth %	55.5%	58.0%	48.1%	75.5%
Latino	8,348	7,106	9,207	4,255
Latino %	41.4%	38.7%	49.7%	21.4%
Asian	486	468	307	494
Asian %	2.4%	2.5%	1.7%	2.5%
Black	127	138	108	113
Black %	0.6%	0.8%	0.6%	0.6%

Citizen Voting Age Population (CVAP)

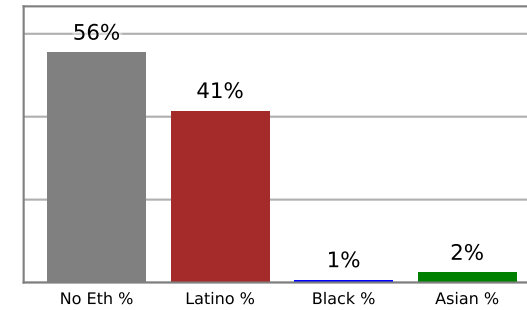
	A	B	C	D
Total US 18+	13,016	12,353	11,079	14,691
No Eth CVAP	8,349	8,730	7,664	11,948
No Eth CVAP %	64.1%	70.7%	69.2%	81.3%
Latino CVAP	4,037	3,145	3,140	2,264
Latino CVAP %	31.0%	25.5%	28.3%	15.4%
Asian CVAP	561	344	126	405
Asian CVAP %	4.3%	2.8%	1.1%	2.8%
Black CVAP	69	134	149	74
Black CVAP %	0.5%	1.1%	1.3%	0.5%

City of Napa

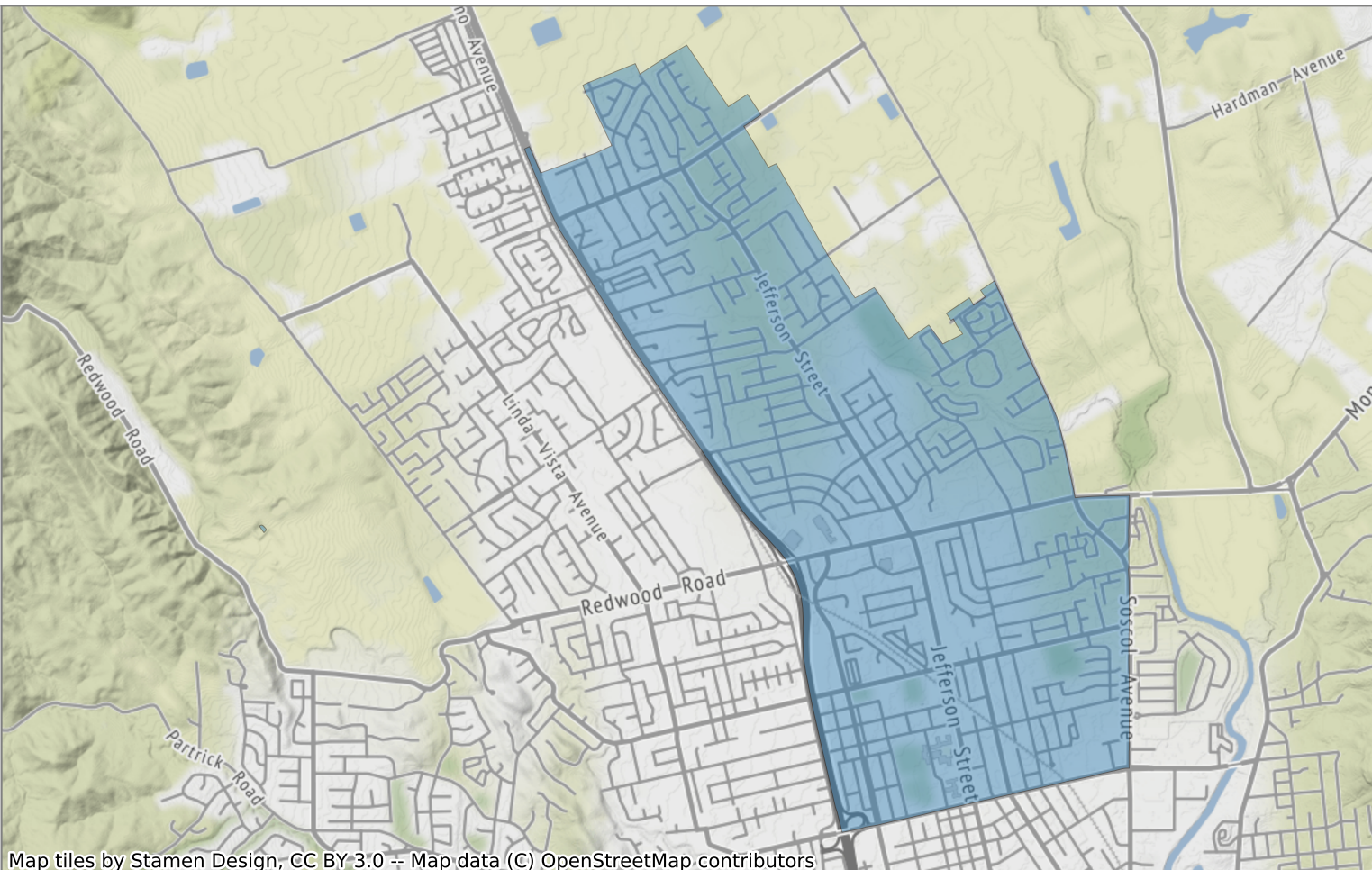
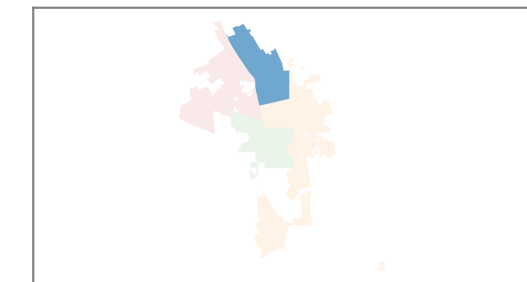
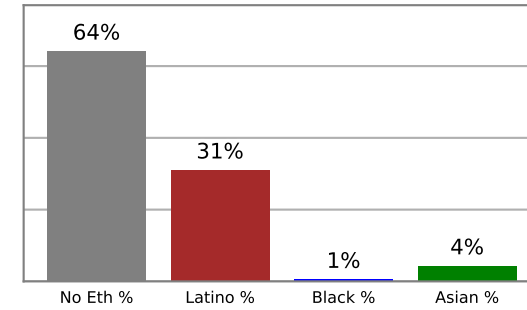
Plan C

District A

2010 Census



Citizen Voting Age Population



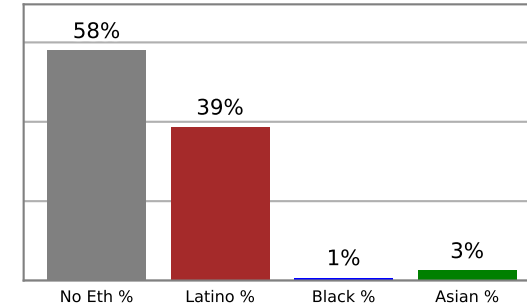
Population	Deviation	Deviation %	No Eth	No Eth %	Latino	Latino %	Asian	Asian %	Black	Black %
20,145	918	4.8%	11,184	55.5%	8,348	41.4%	486	2.4%	127	0.6%
Total US 18+	No Eth CVAP	No Eth CVAP %	Latino CVAP	Latino CVAP %	Asian CVAP	Asian CVAP %	Black CVAP	Black CVAP %		
13,016	8,349	64.1%	4,037	31.0%	561	4.3%	69	0.5%		

City of Napa

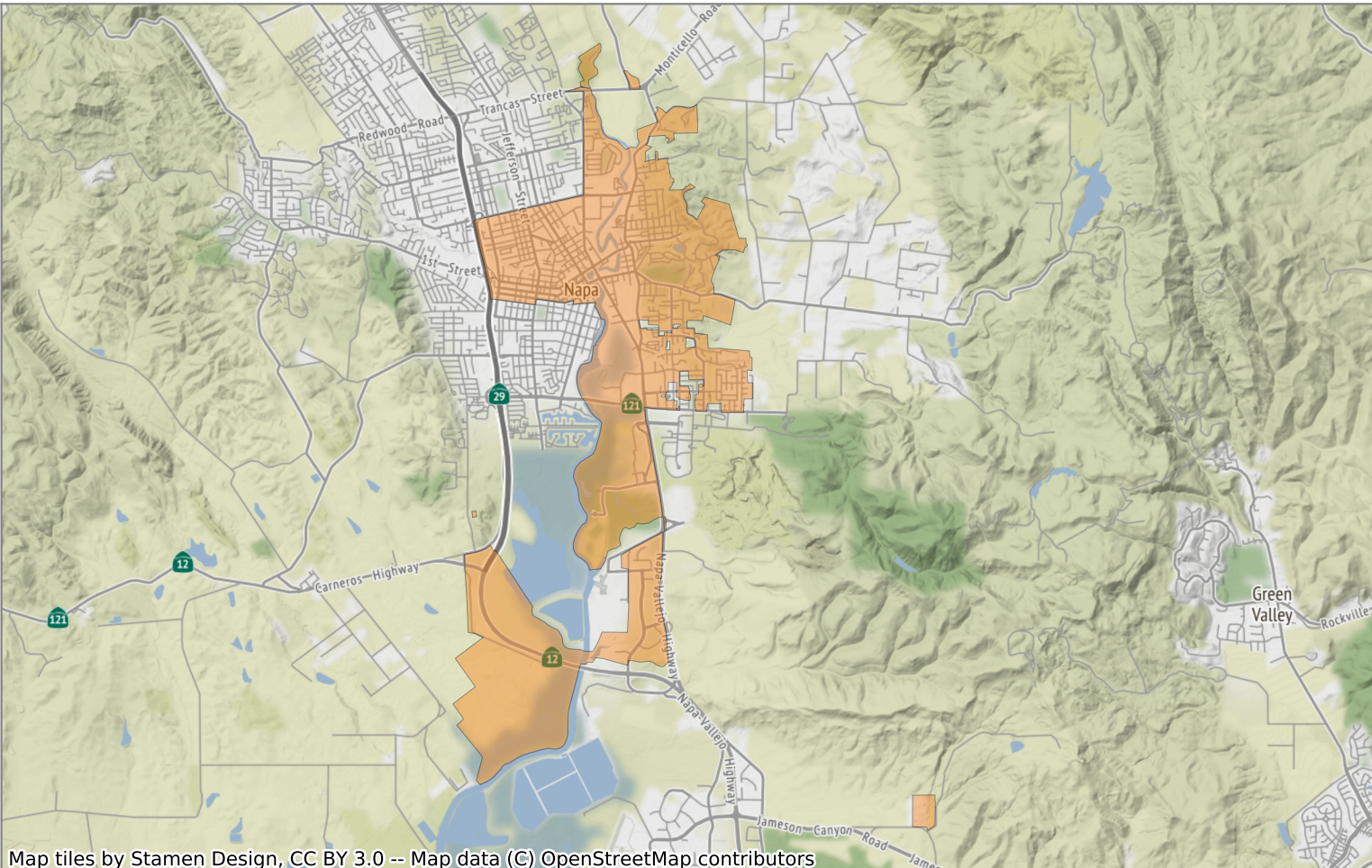
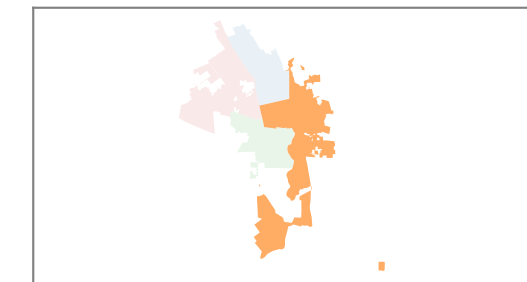
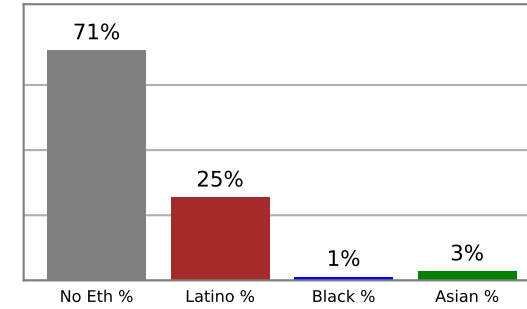
Plan C

District B

2010 Census



Citizen Voting Age Population



Map tiles by Stamen Design, CC BY 3.0 -- Map data (C) OpenStreetMap contributors

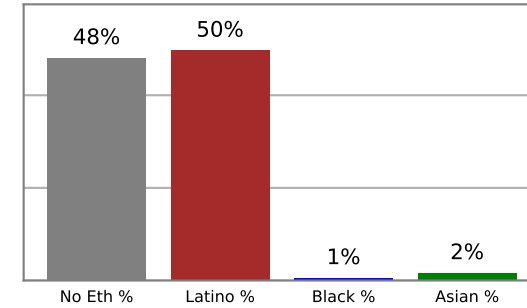
Population	Deviation	Deviation %	No Eth	No Eth %	Latino	Latino %	Asian	Asian %	Black	Black %
18,358	-869	-4.5%	10,646	58.0%	7,106	38.7%	468	2.5%	138	0.8%
Total US 18+	No Eth CVAP	No Eth CVAP %	Latino CVAP	Latino CVAP %	Asian CVAP	Asian CVAP %	Black CVAP	Black CVAP %		
12,353	8,730	70.7%	3,145	25.5%	344	2.8%	134	1.1%		

City of Napa

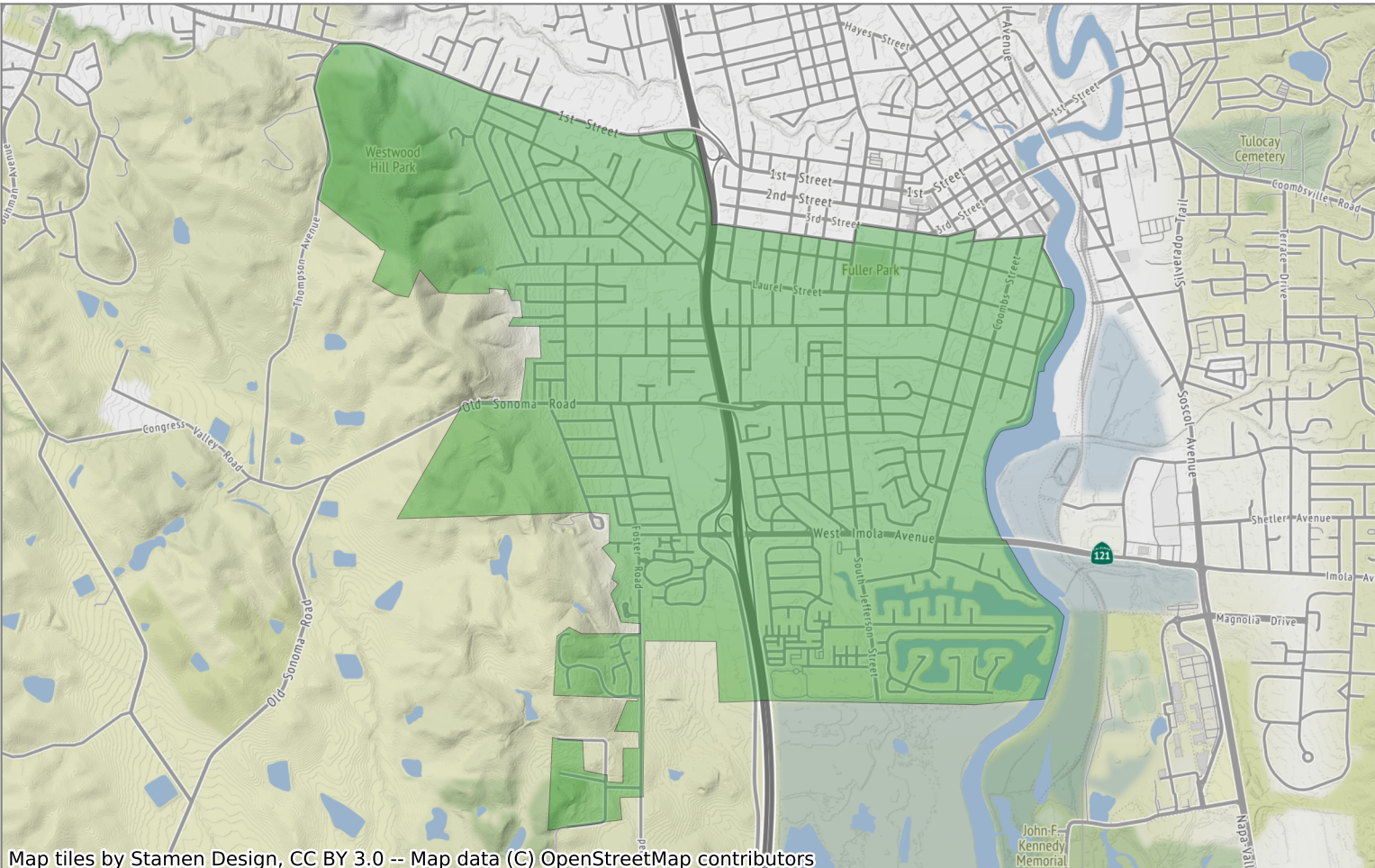
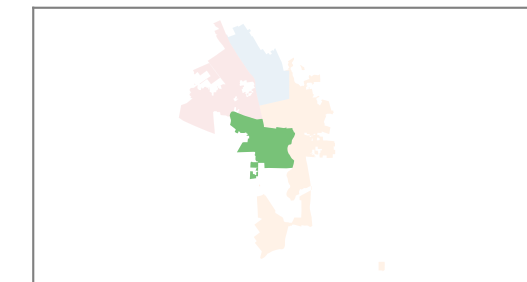
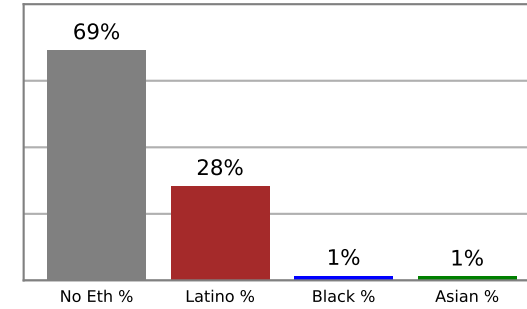
Plan C

District C

2010 Census



Citizen Voting Age Population



Map tiles by Stamen Design, CC BY 3.0 -- Map data (C) OpenStreetMap contributors

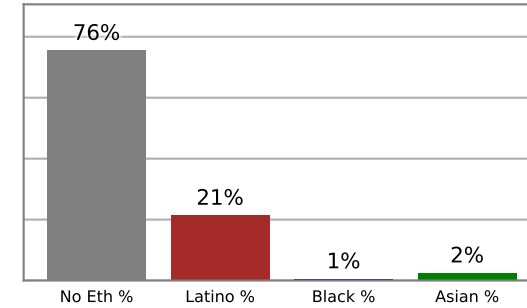
Population	Deviation	Deviation %	No Eth	No Eth %	Latino	Latino %	Asian	Asian %	Black	Black %
18,532	-695	-3.6%	8,910	48.1%	9,207	49.7%	307	1.7%	108	0.6%
Total US 18+	No Eth CVAP	No Eth CVAP %	Latino CVAP	Latino CVAP %	Asian CVAP	Asian CVAP %	Black CVAP	Black CVAP %		
11,079	7,664	69.2%	3,140	28.3%	126	1.1%	149	1.3%		

City of Napa

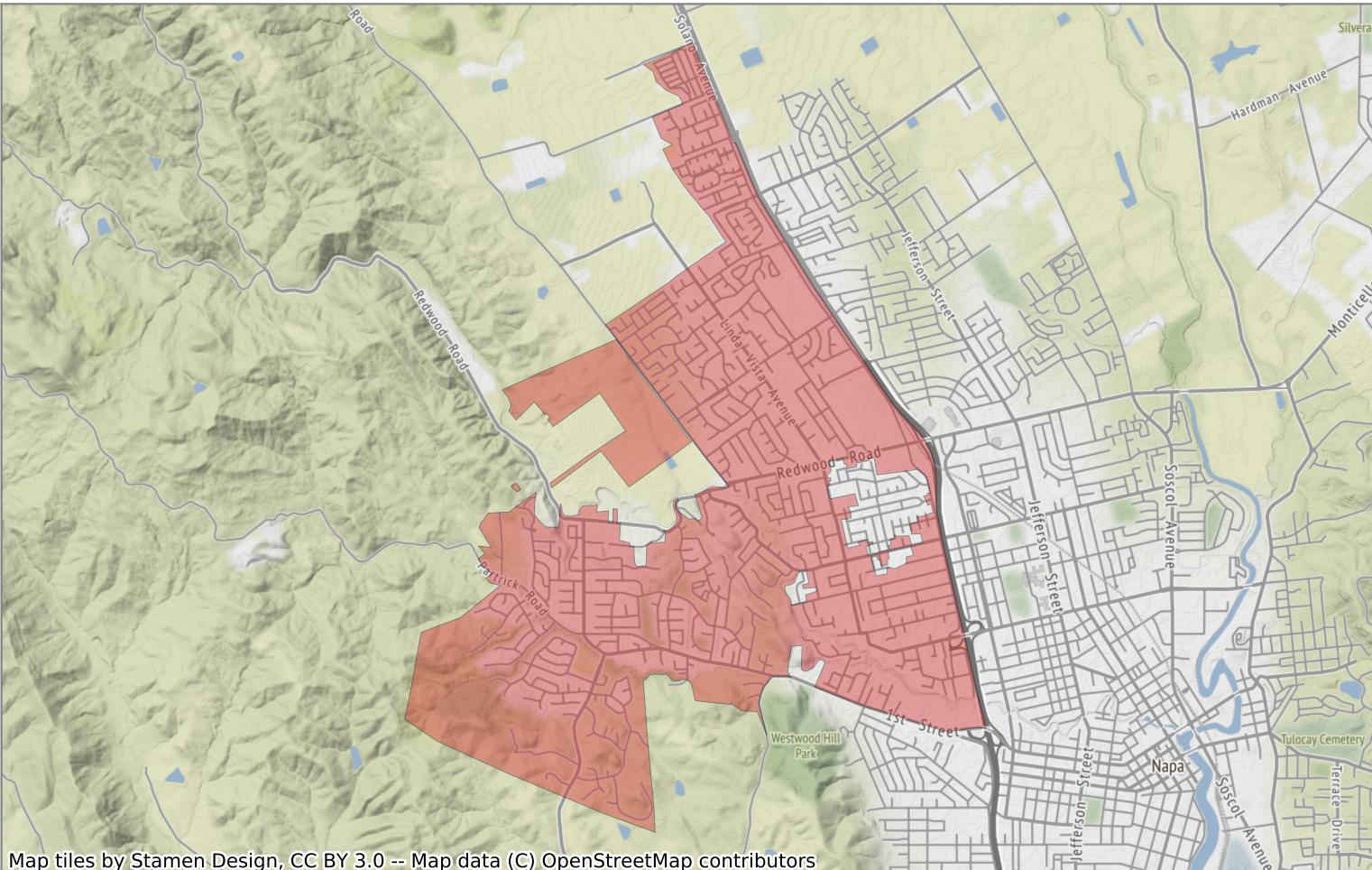
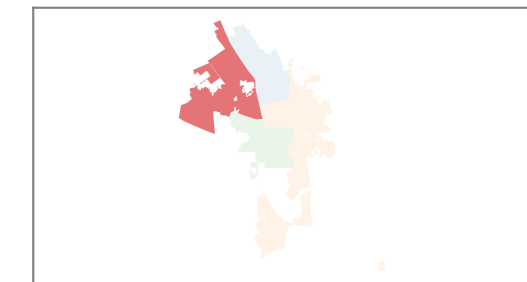
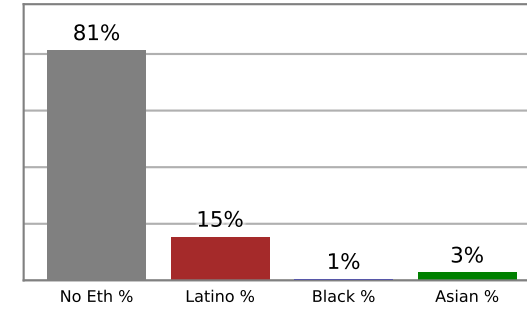
Plan C

District D

2010 Census



Citizen Voting Age Population



Map tiles by Stamen Design, CC BY 3.0 -- Map data (C) OpenStreetMap contributors

Population	Deviation	Deviation %	No Eth	No Eth %	Latino	Latino %	Asian	Asian %	Black	Black %
19,874	647	3.4%	15,012	75.5%	4,255	21.4%	494	2.5%	113	0.6%
Total US 18+	No Eth CVAP	No Eth CVAP %	Latino CVAP	Latino CVAP %	Asian CVAP	Asian CVAP %	Black CVAP	Black CVAP %		
14,691	11,948	81.3%	2,264	15.4%	405	2.8%	74	0.5%		