

EXHIBIT “A”

City of Napa Citywide Landscape Maintenance Assessment District

Engineer’s Report Fiscal Year 2018-2019

Contents

1. Executive Summary
2. Plans and Specifications
3. Estimate of Costs
4. Method of Apportionment of Assessment
5. Assessment District Diagram

EXHIBIT "A"
City of Napa
Citywide Landscape Maintenance Assessment District
Fiscal Year 2018-2019

1. Executive Summary

Pursuant to the provisions of the Landscaping and Lighting Act of 1972 (the "Act"), the City Council of the City of Napa, State of California, adopted a resolution on May 15, 2018 initiating proceedings for the levy of assessments and ordering the preparation of an Engineer's Report for the Citywide Landscape Maintenance Assessment District (the "District") for Fiscal Year 2018-2019.

The foregoing resolution directed Jacques R. LaRochelle, P.E., to prepare and file a report presenting plans and specifications of the existing improvements to be made within the District or within any zone thereof, an estimate of the costs of proposed new improvements and/or maintenance of servicing existing improvements, a diagram of the District, showing the area and properties to be assessed, and an assessment amount, per acre, that will be assessed upon all assessable lots and/or parcels, respectively, within the District in proportion to the special benefit received for the referenced fiscal year.

2. Plans and Specifications

The District provides funding for the continued maintenance, servicing, and administration of various landscaping and lighting improvements and associated appurtenances located within the public right-of-way and dedicated easements within the boundaries of the District.

The diagram showing the exterior boundaries of the District and the lines and dimensions of each lot or parcel of land within each zone is included in Section 5 of this report.

The purpose of the District is to provide for maintenance and servicing of improvements within each benefit zone. Facilities to be maintained and serviced may include, but are not limited to: landscaping, parking lots, walkways, crosswalks, fences, signs, park and parkways, street lights, retaining walls, embankments, drainage facilities, sprinkler systems, electrical energy for irrigation controllers and street lights and associated appurtenant facilities. Landscaping may include ornamental planting including lawns, shrubs and trees. Servicing may include installing, operating, maintaining, repairing and replacing the public facilities together with the equipment, facilities, staff time and any necessary administrative activities. The repair, removal or replacement of all or any part of any improvement, providing for the life, growth, health and beauty of the landscaping, treating for disease or injury, as well as the maintenance, repair and replacement, as necessary, of all irrigation systems and graffiti removal from walls immediately adjacent to the cultivated areas.

EXHIBIT "A"
City of Napa
Citywide Landscape Maintenance Assessment District
Fiscal Year 2018-2019

3. Estimate of Costs (By Zone)

Zone A
Oak Ridge Subdivision
Budget 24108

Estimated Beginning Fund Balance (07/01/18)		\$	3,000
Total Revenue: FY18-19 Assessment		\$	3,280
<u>OBJ CODE</u>	<u>Materials and Supplies</u>		
56101	General Supplies	\$	500
56202	Electricity/Natural Gas	\$	-
	Subtotal	\$	500
	<u>Services and Equipment</u>		
51100	Regular Employees	\$	5,200
51200	Part-Time Employees	\$	-
53102	Property Tax Admin Fee	\$	50
53201	Assessment Roll Prep	\$	115
62100	City Cost Allocation	\$	390
54101	Water	\$	-
57401	Equipment	\$	-
	Subtotal	\$	5,755
	Total Expenses	\$	6,255
Projected Ending Fund Balance (06/30/19)		\$	<u>26</u>
Number of Lots	41		
Per Lot Assessment	\$80		

EXHIBIT "A"
City of Napa
Citywide Landscape Maintenance Assessment District
Fiscal Year 2018-2019

Zone B
Hillview Park Subdivision
Budget 24109

Estimated Beginning Fund Balance (07/01/18)		\$	2,200
Total Revenue: FY18-19 Assessment		\$	1,610
<u>OBJ CODE</u>	<u>Materials and Supplies</u>		
56101	General Supplies	\$	500
56202	Electricity/Natural Gas	\$	-
	Subtotal	\$	500
	<u>Services and Equipment</u>		
51100	Regular Employees	\$	2,900
51200	Part-Time Employees	\$	-
53102	Property Tax Admin Fee	\$	50
53201	Assessment Roll Prep	\$	115
62100	City Cost Allocation	\$	200
54101	Water	\$	-
57401	Equipment	\$	-
	Subtotal	\$	3,265
Total Expenses		\$	3,765
Projected Ending Fund Balance (06/30/19)		\$	<u><u>46</u></u>
Number of Lots	23		
Per Lot Assessment	\$70		

EXHIBIT "A"
City of Napa
Citywide Landscape Maintenance Assessment District
Fiscal Year 2018-2019

Zone C
Sunrise Meadows Subdivision
Budget 24110

Estimated Beginning Fund Balance (07/01/18)		\$	5,800
Total Revenue: FY18-19 Assessment		\$	2,400
<u>OBJ CODE</u>	<u>Materials and Supplies</u>		
56101	General Supplies	\$	500
56202	Electricity/Natural Gas	\$	-
	Subtotal	\$	500
	<u>Services and Equipment</u>		
51100	Regular Employees	\$	6,700
51200	Part-Time Employees	\$	-
53102	Property Tax Admin Fee	\$	60
53201	Assessment Roll Prep	\$	115
62100	City Cost Allocation	\$	280
54101	Water	\$	500
57401	Equipment	\$	-
	Subtotal	\$	7,655
Total Expenses		\$	8,155
Projected Ending Fund Balance (06/30/19)		\$	<u>46</u>
Number of Lots	120		
Per Lot Assessment	\$20		

EXHIBIT "A"
City of Napa
Citywide Landscape Maintenance Assessment District
Fiscal Year 2018-2019

Zone D
Foxridge Subdivision
Budget 24111

Estimated Beginning Fund Balance (07/01/18)		\$	6,600
Total Revenue: FY18-19 Assessment		\$	3,000
<u>OBJ CODE</u>	<u>Materials and Supplies</u>		
56101	General Supplies	\$	500
56202	Electricity/Natural Gas	\$	-
	Subtotal	\$	500
	<u>Services and Equipment</u>		
51100	Regular Employees	\$	7,000
51200	Part-Time Employees	\$	-
53102	Property Tax Admin Fee	\$	50
53201	Assessment Roll Prep	\$	115
62100	City Cost Allocation	\$	400
54101	Water	\$	1,500
57401	Equipment	\$	-
	Subtotal	\$	9,065
Total Expenses		\$	9,565
Projected Ending Fund Balance (06/30/19)		\$	<u>36</u>
Number of Lots	50		
Per Lot Assessment	\$60		

EXHIBIT "A"
City of Napa
Citywide Landscape Maintenance Assessment District
Fiscal Year 2018-2019

Zone E
Trancas Street Median Landscaping
Budget 24112

Estimated Beginning Fund Balance (07/01/18) \$ 6,200

Total Revenue: FY18-19 Assessment \$ 1,700

<u>OBJ CODE</u>	<u>Materials and Supplies</u>		
56101	General Supplies	\$	500
56202	Electricity/Natural Gas	\$	-
	Subtotal	\$	500

	<u>Services and Equipment</u>		
51100	Regular Employees	\$	5,400
51200	Part-Time Employees	\$	1,726
53102	Property Tax Admin Fee	\$	50
53201	Assessment Roll Prep	\$	115
62100	City Cost Allocation	\$	70
54101	Water	\$	-
57401	Equipment	\$	-
	Subtotal	\$	7,361

Total Expenses \$ 7,861

Projected Ending Fund Balance (06/30/19) \$ 40

Number of Lots	2
Per Lot Assessment	\$850

EXHIBIT "A"
City of Napa
Citywide Landscape Maintenance Assessment District
Fiscal Year 2018-2019

Zone F
Oxford Gardens Subdivision
Budget 24113

Estimated Beginning Fund Balance (07/01/18)		\$	1,200
Total Revenue: FY18-19 Assessment		\$	960
<u>OBJ CODE</u>	<u>Materials and Supplies</u>		
56101	General Supplies	\$	200
56202	Electricity/Natural Gas	\$	-
	Subtotal	\$	200
	<u>Services and Equipment</u>		
51100	Regular Employees	\$	1,100
53102	Property Tax Admin Fee	\$	50
53201	Assessment Roll Prep	\$	115
62100	City Cost Allocation	\$	110
54101	Water	\$	500
57401	Equipment	\$	-
	Subtotal	\$	1,875
Total Expenses		\$	2,075
Projected Ending Fund Balance (06/30/19)		\$	<u>86</u>
Number of Lots	16		
Per Lot Assessment	\$60		

EXHIBIT "A"
City of Napa
Citywide Landscape Maintenance Assessment District
Fiscal Year 2018-2019

Zone G
Glencar Estates Subdivision
Budget 24116

Estimated Beginning Fund Balance (07/01/18)		\$	2,400
Total Revenue: FY18-19 Assessment		\$	2,320
<u>OBJ CODE</u>	<u>Materials and Supplies</u>		
56101	General Supplies	\$	-
56202	Electricity/Natural Gas	\$	-
	Subtotal	\$	-
	<u>Services and Equipment</u>		
51100	Regular Employees	\$	3,400
51200	Part-Time Employees	\$	-
53102	Property Tax Admin Fee	\$	50
53201	Assessment Roll Prep	\$	115
62100	City Cost Allocation	\$	600
54101	Water	\$	500
57401	Equipment	\$	-
	Subtotal	\$	4,665
Total Expenses		\$	4,665
Projected Ending Fund Balance (06/30/19)			<u><u>56</u></u>
Number of Lots	29		
Per Lot Assessment	\$80		

EXHIBIT "A"
City of Napa
Citywide Landscape Maintenance Assessment District
Fiscal Year 2018-2019

Zone H
Dry Creek Village Subdivision
Budget 24115

Estimated Beginning Fund Balance (07/01/18)		\$	7,150
Total Revenue: FY18-19 Assessment		\$	2,280
<u>OBJ CODE</u>	<u>Materials and Supplies</u>		
56101	General Supplies	\$	500
56202	Electricity/Natural Gas	\$	-
	Subtotal	\$	500
	<u>Services and Equipment</u>		
51100	Regular Employees	\$	8,400
51200	Part-Time Employees	\$	-
53102	Property Tax Admin Fee	\$	80
53201	Assessment Roll Prep	\$	115
62100	City Cost Allocation	\$	330
54101	Water	\$	-
57401	Equipment	\$	-
	Subtotal	\$	8,925
Total Expenses		\$	9,425
Projected Ending Fund Balance (06/30/19)		\$	<u>5</u>
Number of Lots	152		
Per Lot Assessment	\$15		

EXHIBIT "A"
City of Napa
Citywide Landscape Maintenance Assessment District
Fiscal Year 2018-2019

Zone I
Rancho Las Flores Subdivision
Budget 24114

Estimated Beginning Fund Balance (07/01/18)		\$	4,600
Total Revenue: FY18-19 Assessment		\$	4,080
<u>OBJ CODE</u>	<u>Materials and Supplies</u>		
56101	General Supplies	\$	500
56202	Electricity/Natural Gas	\$	-
	Subtotal	\$	500
	<u>Services and Equipment</u>		
51100	Regular Employees	\$	7,300
51200	Part-Time Employees	\$	-
53102	Property Tax Admin Fee	\$	70
53201	Assessment Roll Prep	\$	115
62100	City Cost Allocation	\$	650
54101	Water	\$	-
57401	Equipment	\$	-
	Subtotal	\$	8,135
Total Expenses		\$	8,635
Projected Ending Fund Balance (06/30/19)		\$	<u>46</u>
Number of Lots		136	
Per Lot Assessment		\$30	

EXHIBIT "A"
City of Napa
Citywide Landscape Maintenance Assessment District
Fiscal Year 2018-2019

Zone J
Woodside Gardens Subdivision
Budget 24117

Estimated Beginning Fund Balance (07/01/18)		\$	2,000
Total Revenue: FY18-19 Assessment		\$	1,600
<u>OBJ CODE</u>	<u>Materials and Supplies</u>		
56101	General Supplies	\$	500
56202	Electricity/Natural Gas	\$	-
	Subtotal	\$	500
	<u>Services and Equipment</u>		
51100	Regular Employees	\$	2,100
51200	Part-Time Employees	\$	-
53102	Property Tax Admin Fee	\$	50
53201	Assessment Roll Prep	\$	115
62100	City Cost Allocation	\$	260
54101	Water	\$	500
57401	Equipment	\$	-
	Subtotal	\$	3,025
Total Expenses		\$	3,525
Projected Ending Fund Balance (06/30/19)		\$	<u>76</u>
Number of Lots	20		
Per Lot Assessment	\$80		

EXHIBIT "A"
City of Napa
Citywide Landscape Maintenance Assessment District
Fiscal Year 2018-2019

Zone K
Hyde Park II Subdivision
Budget 24118

Estimated Beginning Fund Balance (07/01/18)		\$	6,300
Total Revenue: FY18-19 Assessment		\$	2,200
<u>OBJ CODE</u>	<u>Materials and Supplies</u>		
56101	General Supplies	\$	1,000
56202	Electricity/Natural Gas	\$	-
	Subtotal	\$	1,000
	<u>Services and Equipment</u>		
51100	Regular Employees	\$	7,000
51200	Part-Time Employees	\$	-
53102	Property Tax Admin Fee	\$	50
53201	Assessment Roll Prep	\$	115
62100	City Cost Allocation	\$	280
54101	Water	\$	-
57401	Equipment	\$	-
	Subtotal	\$	7,445
	Total Expenses	\$	8,445
Projected Ending Fund Balance (06/30/19)		\$	<u>56</u>
Number of Lots	20		
Per Lot Assessment	\$110		

EXHIBIT "A"
City of Napa
Citywide Landscape Maintenance Assessment District
Fiscal Year 2018-2019

Zone L
Walnut Grove Subdivision Unit 1
Budget 24119

Estimated Beginning Fund Balance (07/01/18)		\$	720
Total Revenue: FY18-19 Assessment		\$	550
<u>OBJ CODE</u>	<u>Materials and Supplies</u>		
56101	General Supplies	\$	-
56202	Electricity/Natural Gas	\$	-
	Subtotal	\$	-
	<u>Services and Equipment</u>		
51100	Regular Employees	\$	300
53102	Property Tax Admin Fee	\$	50
53201	Assessment Roll Prep	\$	90
62100	City Cost Allocation	\$	80
54101	Water	\$	-
57401	Equipment	\$	-
	Subtotal	\$	520
Total Expenses		\$	520
Projected Ending Fund Balance (06/30/19)		\$	<u>750</u>
Number of Lots	11		
Per Lot Assessment	\$50		

EXHIBIT "A"
City of Napa
Citywide Landscape Maintenance Assessment District
Fiscal Year 2018-2019

Zone M
Vineyard Vista Subdivision
Budget 24120

Estimated Beginning Fund Balance (07/01/18)		\$	7,100
Total Revenue: FY18-19 Assessment		\$	2,080
<u>OBJ CODE</u>	<u>Materials and Supplies</u>		
56101	General Supplies	\$	1,000
56202	Electricity/Natural Gas	\$	-
	Subtotal	\$	1,000
	<u>Services and Equipment</u>		
51100	Regular Employees	\$	7,600
51200	Part-Time Employees	\$	-
53102	Property Tax Admin Fee	\$	50
53201	Assessment Roll Prep	\$	115
62100	City Cost Allocation	\$	410
54101	Water	\$	-
57401	Equipment	\$	-
	Subtotal	\$	8,175
Total Expenses		\$	9,175
Projected Ending Fund Balance (06/30/19)		\$	<u><u>6</u></u>
Number of Lots	13		
Per Lot Assessment	\$160		

EXHIBIT "A"
City of Napa
Citywide Landscape Maintenance Assessment District
Fiscal Year 2018-2019

Zone N
Orchard Estates Subdivision
Budget 24121

Estimated Beginning Fund Balance (07/01/18)		\$	1,600
Total Revenue: FY18-19 Assessment		\$	3,000
<u>OBJ CODE</u>	<u>Materials and Supplies</u>		
56101	General Supplies	\$	200
56202	Electricity/Natural Gas	\$	-
	Subtotal	\$	200
	<u>Services and Equipment</u>		
51100	Regular Employees	\$	2,700
51200	Part-Time Employees	\$	-
53102	Property Tax Admin Fee	\$	50
53201	Assessment Roll Prep	\$	115
62100	City Cost Allocation	\$	490
54101	Water	\$	1,000
57401	Equipment	\$	-
	Subtotal	\$	4,355
Total Expenses		\$	4,555
Projected Ending Fund Balance (06/30/19)			<u><u>46</u></u>
Number of Lots			25
Per Lot Assessment			\$120

EXHIBIT "A"
City of Napa
Citywide Landscape Maintenance Assessment District
Fiscal Year 2018-2019

Zone O
Chaudhary Estates Subdivision
Budget 24122

Estimated Beginning Fund Balance (07/01/18)		\$	3,115
Total Revenue: FY18-19 Assessment		\$	1,400
<u>OBJ CODE</u>	<u>Materials and Supplies</u>		
56101	General Supplies	\$	500
56202	Electricity/Natural Gas	\$	-
	Subtotal	\$	500
	<u>Services and Equipment</u>		
51100	Regular Employees	\$	1,100
51200	Part-Time Employees	\$	-
53102	Property Tax Admin Fee	\$	50
53201	Assessment Roll Prep	\$	115
62100	City Cost Allocation	\$	130
54101	Water	\$	-
57401	Equipment	\$	-
	Subtotal	\$	1,395
Total Expenses		\$	1,895
Projected Ending Fund Balance (06/30/19)		\$	<u>2,621</u>
Number of Lots	7		
Per Lot Assessment	\$200		

EXHIBIT "A"
City of Napa
Citywide Landscape Maintenance Assessment District
Fiscal Year 2018-2019

Zone P
Mills Subdivision
Budget 24123

Estimated Beginning Fund Balance (07/01/18)		\$	3,184
Total Revenue: FY18-19 Assessment		\$	1,600
<u>OBJ CODE</u>	<u>Materials and Supplies</u>		
56101	General Supplies	\$	500
56202	Electricity/Natural Gas	\$	-
	Subtotal	\$	500
	<u>Services and Equipment</u>		
51100	Regular Employees	\$	3,300
51200	Part-Time Employees	\$	-
53102	Property Tax Admin Fee	\$	50
53201	Assessment Roll Prep	\$	115
62100	City Cost Allocation	\$	230
54101	Water	\$	500
57401	Equipment	\$	-
	Subtotal	\$	4,195
Total Expenses		\$	4,695
Projected Ending Fund Balance (06/30/19)		\$	<u>90</u>
Number of Lots	8		
Per Lot Assessment	\$200		

EXHIBIT "A"
City of Napa
Citywide Landscape Maintenance Assessment District
Fiscal Year 2018-2019

4. Method of Apportionment of Assessment

The assessment for the maintenance of the improvements will be apportioned to each parcel in the District as shown on the latest equalized roll of the County Assessor. The description of each lot or parcel is part of the records of the County Assessor of the County of Napa and such records are, by reference, made part of this Report.

Pursuant to the Landscaping and Lighting Act of 1972 and Article XIID of the Constitution of the State of California, all parcels that have special benefit conferred upon them as a result of the maintenance and operation of improvements are identified and the proportionate special benefit derived by each identified parcel is determined in relationship to the entire cost of the maintenance and operation of the improvements. Only parcels that receive direct special benefit are assessed, and each parcel is assessed in proportion to the estimated benefit received.

The purpose of the District is to provide a means for maintenance of "back-on" landscaping improvements along arterial and major collector streets in new subdivisions and landscaping in street medians. The Developer is required to install the landscaping and irrigation improvements as part of the subdivision development. The cost of maintaining the landscaping and irrigation improvements shall be calculated separately for each zone and this cost shall be apportioned to the lots in each subdivision in the following manner:

ZONE A - Oakridge Subdivision

The cost of maintaining the fifteen (15) foot strip approximately one thousand (1,000) feet long along the west side of Foster Road shall be assessed equally to the owners of Lots 1 through 41 of Oak Ridge Subdivision. The fifteen (15) foot strip consists of five (5) feet in the City right-of-way and ten (10) feet in a Landscape Maintenance Easement in the rear and side yards of several lots in the subdivision.

ZONE B - Hillview Park Subdivision

The cost of maintaining the fifteen (15) foot strip approximately three hundred ninety-five (395) feet long along the north side of Browns Valley Road shall be assessed equally to the owners of Lots 1 through 23 of Hillview Park Subdivision. The fifteen (15) foot strip consists of five (5) feet in the City right-of-way and ten (10) feet in a Landscape Maintenance Easement in the rear and side yards of several lots in the subdivision.

ZONE C - Sunrise Meadows Subdivision

The cost of maintaining the fifteen (15) foot strip approximately four hundred fifteen (415) feet long along the south side of Redwood Road shall be assessed equally to the owners of Lots 1 through 120 of Sunrise Meadows Subdivision. The fifteen (15) foot strip consists of five (5) feet in the City right-of-way and ten (10) feet in a Landscape Maintenance Easement in the rear yards and side yards of several lots in the subdivision.

ZONE D - Foxridge Subdivision

The cost of maintaining the twenty (20) foot strip approximately fifteen hundred (1500) feet long along the west side of Browns Valley Road, and the twenty (20) foot strip approximately five hundred (500) feet long along the south side of Redwood Road shall be assessed equally to the owners of Lots 1 through 50 of Foxridge Subdivision. The twenty (20) foot strip consists of five (5) feet in the City right-of-way and fifteen (15) feet in a Landscape Maintenance Easement in the rear and side yards of several lots in the subdivision.

EXHIBIT "A"
City of Napa
Citywide Landscape Maintenance Assessment District
Fiscal Year 2018-2019

ZONE E - Trancas Street Median Landscaping

The cost of maintaining the landscaped median islands on Trancas Street, between California Boulevard and Baxter Avenue, shall be assessed equally to the owners of APN 1-370-23 and APN 1-370-33. The landscaped median islands consist of the island in the center of Trancas Street, between Baxter Avenue and the signalized entrance to the Bel Aire Plaza Shopping Center and the landscaped island in the intersection of Baxter Avenue and Trancas Street.

ZONE F - Oxford Gardens Subdivision

The cost of maintaining the fifteen (15) foot strip, approximately two hundred thirty (230) feet long along the south side of Trower Avenue shall be assessed equally to the owners of Lots 1 through 16 of Oxford Gardens I and Oxford Gardens II Subdivision. The fifteen (15) foot strip consists of five (5) feet in the City right-of-way, and ten (10) feet in a Landscape Maintenance Easement in the rear and side yards of several lots in the subdivision.

ZONE G - Glencar Estates Subdivision

The cost of maintaining the fifteen (15) foot strip, approximately six hundred (600) feet long along the east side of Dry Creek Road, shall be assessed equally to the owners of Lots 1 through 29 of Glencar Estates Subdivision. The fifteen (15) foot strip consists of five (5) feet in the City right-of-way and ten (10) feet in a Landscape Maintenance Easement in the rear and side yards of several lots in the subdivision.

ZONE H - Dry Creek Village Subdivision

The cost of maintaining the fifteen (15) foot strip, approximately six hundred (600) feet long along the east side of Dry Creek Road, shall be assessed equally to the owners of Lots 1 through 152 of Dry Creek Village Unit No. 1 and Dry Creek Village Unit No. 2. The fifteen (15) foot strip consists of five (5) feet in the City right-of-way and ten (10) feet in a Landscape Maintenance Easement in the rear and side yards of several lots in the subdivision.

ZONE I - Rancho Las Flores Subdivision

The cost of maintaining the fifteen (15) foot strip, approximately fourteen hundred (1400) feet long along the south side of Wine Country Avenue shall be assessed equally to the owners of Lots 1 through 136 of Rancho Las Flores Subdivision. The fifteen (15) foot strip consists of five (5) feet in the City right-of-way and ten (10) feet in a Landscape Maintenance Easement in the rear and side yards of several lots in the subdivision.

ZONE J - Woodside Gardens Subdivision

The cost of maintaining the fifteen (15) foot strip, approximately four hundred (400) feet long along the north side of Wine Country Avenue shall be assessed equally to the owners of Lots 1 through 20 of Woodside Gardens Subdivision. The fifteen (15) foot strip consists of five (5) feet in the City right-of-way and ten (10) feet in a Landscape Maintenance Easement in the rear and side yards of several lots in the subdivision.

ZONE K - Hyde Park II Subdivision

The cost of maintaining the fifteen (15) foot strip, approximately 546 feet long on the west side of Jefferson Street, shall be assessed equally to the owners of Lots 24 through 67 of Hyde Park II Subdivision. The fifteen (15) foot strip consists of five (5) feet in the City right-of-way and ten (10) feet in a Landscape Maintenance Easement in the rear and side yards of several lots in the subdivision.

EXHIBIT "A"
City of Napa
Citywide Landscape Maintenance Assessment District
Fiscal Year 2018-2019

ZONE L - Walnut Grove Subdivision

The cost of maintaining and replacing the existing walnut tree in the new median island in Black Walnut Lane shall be assessed equally to the owners of Lots 1 through 11 of Walnut Grove Subdivision, Unit One.

ZONE M - Vineyard Vista Estates Subdivision

The cost of maintaining the ten (10) foot strip, approximately 800 feet long on the west side of Summerfield Drive, shall be assessed equally to the owners of Lots 1 through 13 of Vineyard Vista Estates Subdivision. The ten (10) foot strip consists of the area behind the sidewalk and the area between the curb and sidewalk approximately 100 feet southerly of Salvador Avenue, all in the public right-of-way.

ZONE N – Orchard Estates Subdivision

The cost of maintaining the twenty-six (26) foot landscape strip, approximately 373 feet long along the south side of Orchard Avenue shall be assessed equally to the owners of Lots 1 through 25 of Orchard Estates Subdivision.

ZONE O – Chaudhary Estates Subdivision

The cost of maintaining the twenty (20) foot wide strip of land, approximately 210 feet in length on the south side of Trower Avenue shall be assessed equally to the owners of Lots 1 through 7 of the Chaudhary Estates. The twenty (20) foot wide strip consists of ten (10) feet of City Street right- of-way and ten (10) feet of landscape easement behind proposed lots 5, 6 and 7.

ZONE P – Mills Subdivision

The cost of maintaining the ten (10) foot wide strip of land, approximately 300 feet in length on the south side of Browns Valley Road shall be assessed equally to the owners of Lots 1 through 8 of the Mills Subdivision. The ten (10) feet of landscape easement is located at the rear of Lots 1 through 4 beginning at McCormick Lane and running east.

EXHIBIT "A"
City of Napa
Citywide Landscape Maintenance Assessment District
Fiscal Year 2018-2019

5. Assessment District Diagram

An Assessment Diagram for each zone within the District has been submitted to the City Clerk in the format required under the provision of the Act. The lines and dimensions as shown on maps of the Napa County Assessor for the current year are incorporated herein and made part of this Report.

ZONE A OAK RIDGE SUBDIVISION

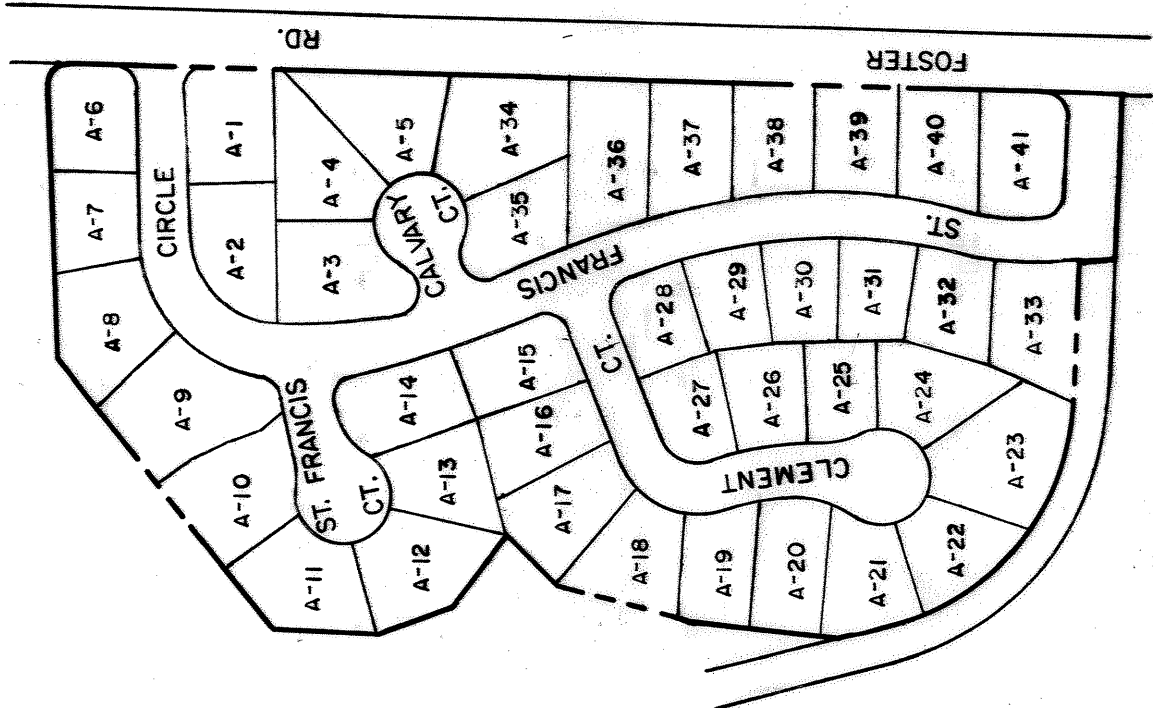


EXHIBIT "A"

ASSESSMENT NUMBER		ASSESSORS PARCEL NUMBER	
A-1	43-372-07	A-1	43-372-07
A-2	43-372-06	A-2	43-372-06
A-3	43-372-03	A-3	43-372-03
A-4	43-372-04	A-4	43-372-04
A-5	43-372-05	A-5	43-372-05
A-6	43-371-07	A-6	43-371-07
A-7	43-371-08	A-7	43-371-08
A-8	43-371-09	A-8	43-371-09
A-9	43-371-17	A-9	43-371-17
A-10	43-371-16	A-10	43-371-16
A-11	43-371-12	A-11	43-371-12
A-12	43-371-13	A-12	43-371-13
A-13	43-371-14	A-13	43-371-14
A-14	43-371-15	A-14	43-371-15
A-15	43-382-01	A-15	43-382-01
A-16	43-382-02	A-16	43-382-02
A-17	43-382-03	A-17	43-382-03
A-18	43-382-04	A-18	43-382-04
A-19	43-382-05	A-19	43-382-05
A-20	43-382-06	A-20	43-382-06
A-21	43-382-07	A-21	43-382-07
A-22	43-382-08	A-22	43-382-08
A-23	43-382-09	A-23	43-382-09
A-24	43-382-10	A-24	43-382-10
A-25	43-382-11	A-25	43-382-11
A-26	43-382-12	A-26	43-382-12
A-27	43-382-13	A-27	43-382-13
A-28	43-382-14	A-28	43-382-14
A-29	43-382-15	A-29	43-382-15
A-30	43-382-16	A-30	43-382-16
A-31	43-382-17	A-31	43-382-17
A-32	43-382-18	A-32	43-382-18
A-33	43-382-19	A-33	43-382-19
A-34	43-383-01	A-34	43-383-01
A-35	43-383-02	A-35	43-383-02
A-36	43-383-03	A-36	43-383-03
A-37	43-383-04	A-37	43-383-04
A-38	43-383-05	A-38	43-383-05
A-39	43-383-06	A-39	43-383-06
A-40	43-383-07	A-40	43-383-07
A-41	43-383-08	A-41	43-383-08

ZONE B
HILLVIEW PARK SUBDIVISION

ASSESSMENT NUMBER	ASSESSORS PARCEL NUMBER
B-1	41-171-01
B-2	41-171-02
B-3	41-171-03
B-4	41-171-04
B-5	41-171-05
B-6	41-171-06
B-7	41-171-07
B-8	41-171-08
B-9	41-171-09
B-10	41-170-14
B-11	41-170-15
B-12	41-170-16
B-13	41-170-17
B-14	41-170-18
B-15	41-170-19
B-16	41-170-20
B-17	41-170-21
B-18	41-170-22
B-19	41-170-23
B-20	41-170-24
B-21	41-170-25
B-22	41-170-26
B-23	41-170-27

ZONE B
HILLVIEW PARK SUBDIVISION

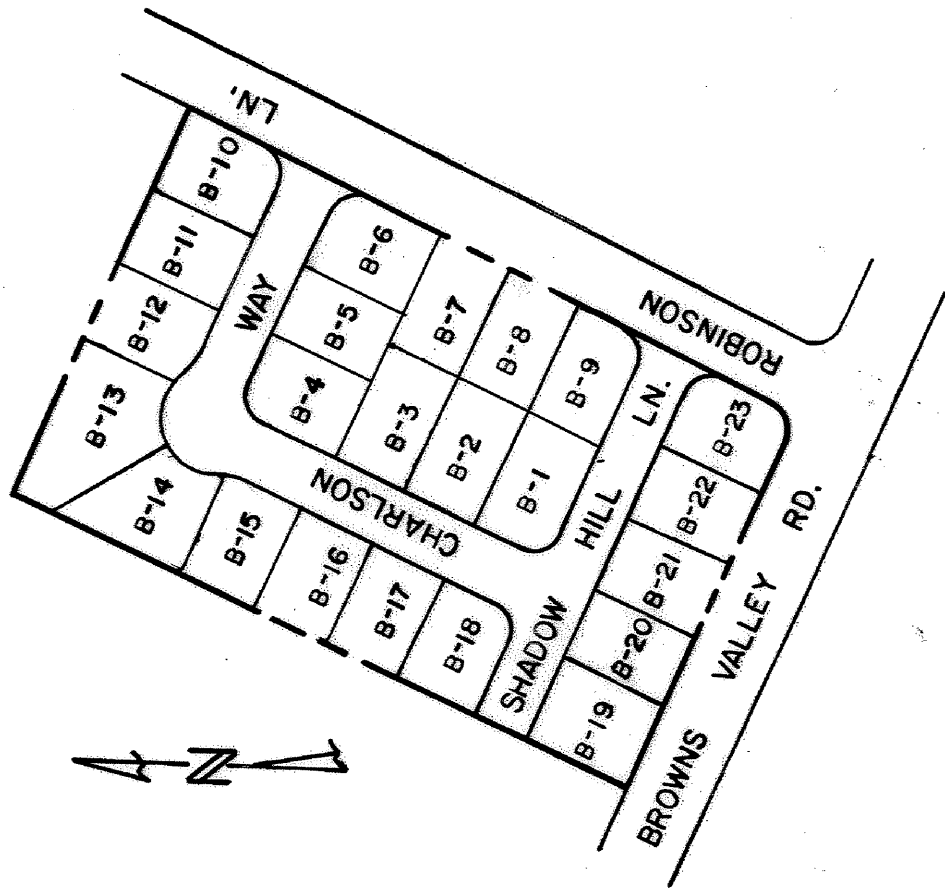


EXHIBIT "A"

ZONE C

SUNRISE MEADOWS SUBDIVISION

ASSESSMENT NUMBER	ASSESSOR'S PARCEL NUMBER
C-99	41-753
C-100	41-753
C-101	41-753
C-102	41-753
C-103	41-753
C-104	41-753
C-105	41-753
C-106	41-754
C-107	41-754
C-108	41-754
C-109	41-754
C-110	41-754
C-111	41-754
C-112	41-754
C-113	41-754
C-114	41-754
C-115	41-754
C-116	41-754
C-117	41-754
C-118	41-754
C-119	41-754
C-120	41-754

ZONE C

SUNRISE MEADOWS SUBDIVISION

ASSESSMENT NUMBER	ASSESSOR'S PARCEL NUMBER
C-50	41-742-18
C-51	41-742-38
C-52	41-742-39
C-53	41-742-21
C-54	41-742-22
C-55	41-742-23
C-56	41-742-24
C-57	41-742-25
C-58	41-742-26
C-59	41-742-27
C-60	41-742-28
C-61	41-742-29
C-62	41-742-30
C-63	41-742-31
C-64	41-742-32
C-65	41-742-33
C-66	41-742-34
C-67	41-742-35
C-68	41-742-36
C-69	41-742-37
C-70	41-743-01
C-71	41-743-02
C-72	41-743-03
C-73	41-743-04
C-74	41-743-05
C-75	41-743-06
C-76	41-743-07
C-77	41-743-08
C-78	41-743-09
C-79	41-751-01
C-80	41-751-02
C-81	41-751-03
C-82	41-751-04
C-83	41-751-05
C-84	41-751-06
C-85	41-751-08
C-86	41-752-01
C-87	41-752-02
C-88	41-752-03
C-89	41-752-04
C-90	41-752-05
C-91	41-752-06
C-92	41-752-07
C-93	41-752-08
C-94	41-752-09
C-95	41-752-10
C-96	41-753-02
C-97	41-753-03
C-98	41-753-04

ZONE C

SUNRISE MEADOWS SUBDIVISION

ASSESSMENT NUMBER	ASSESSOR'S PARCEL NUMBER
C-1	41-731-03
C-2	41-731-04
C-3	41-731-05
C-4	41-731-06
C-5	41-731-07
C-6	41-731-08
C-7	41-732-01
C-8	41-732-02
C-9	41-732-03
C-10	41-732-04
C-11	41-732-18
C-12	41-732-06
C-13	41-732-07
C-14	41-732-08
C-15	41-732-09
C-16	41-732-16
C-17	41-732-17
C-18	41-732-12
C-19	41-732-13
C-20	41-732-14
C-21	41-732-15
C-22	41-741-01
C-23	41-741-02
C-24	41-741-03
C-25	41-741-04
C-26	41-741-05
C-27	41-741-06
C-28	41-741-07
C-29	41-741-08
C-30	41-741-09
C-31	41-741-10
C-32	41-741-11
C-33	41-742-01
C-34	41-742-02
C-35	41-742-03
C-36	41-742-04
C-37	41-742-05
C-38	41-742-06
C-39	41-742-07
C-40	41-742-08
C-41	41-742-09
C-42	41-742-10
C-43	41-742-11
C-44	41-742-12
C-45	41-742-13
C-46	41-742-14
C-47	41-742-15
C-48	41-742-16
C-49	41-742-17

ZONE C

SUNRISE MEADOWS SUBDIVISION

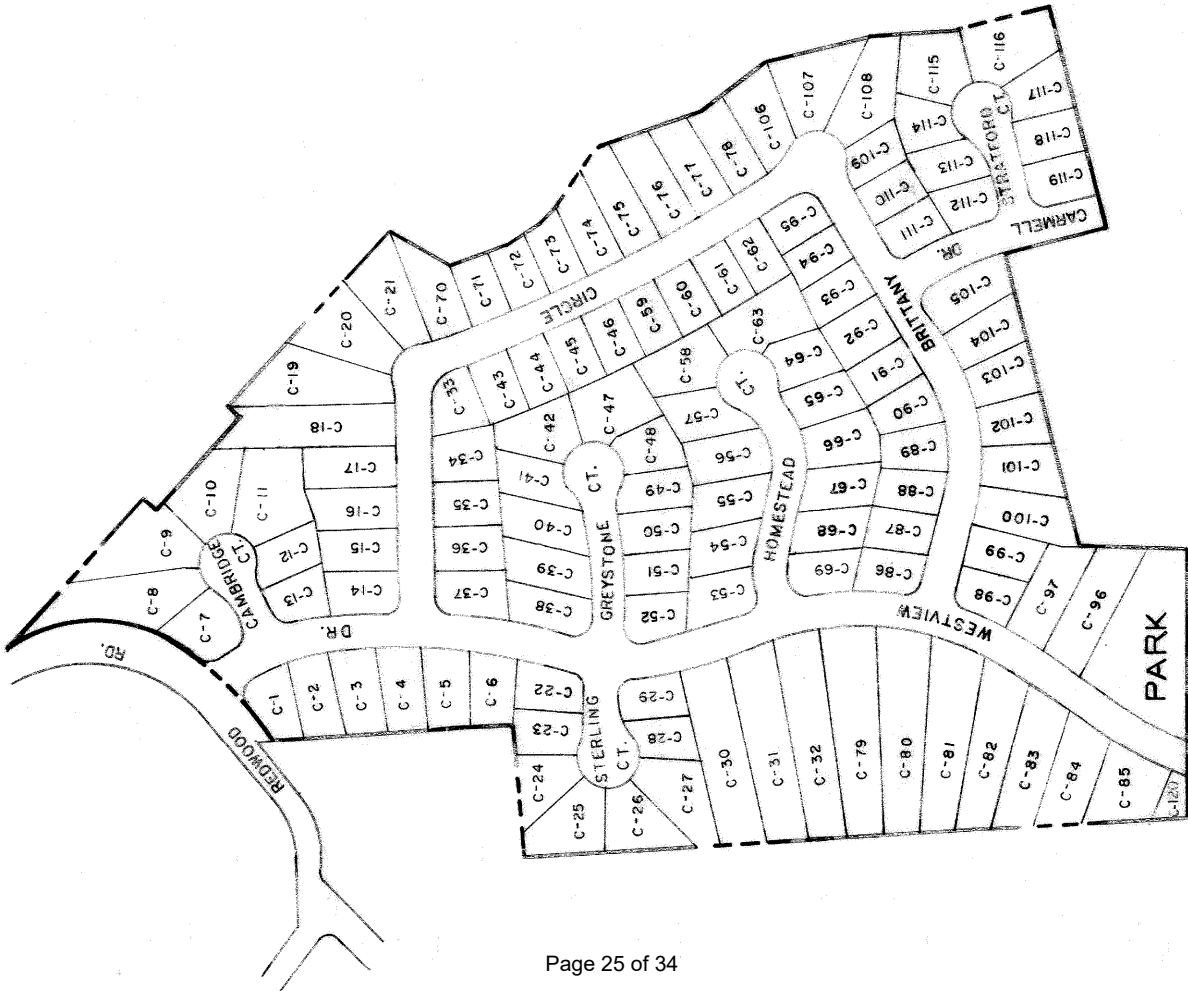
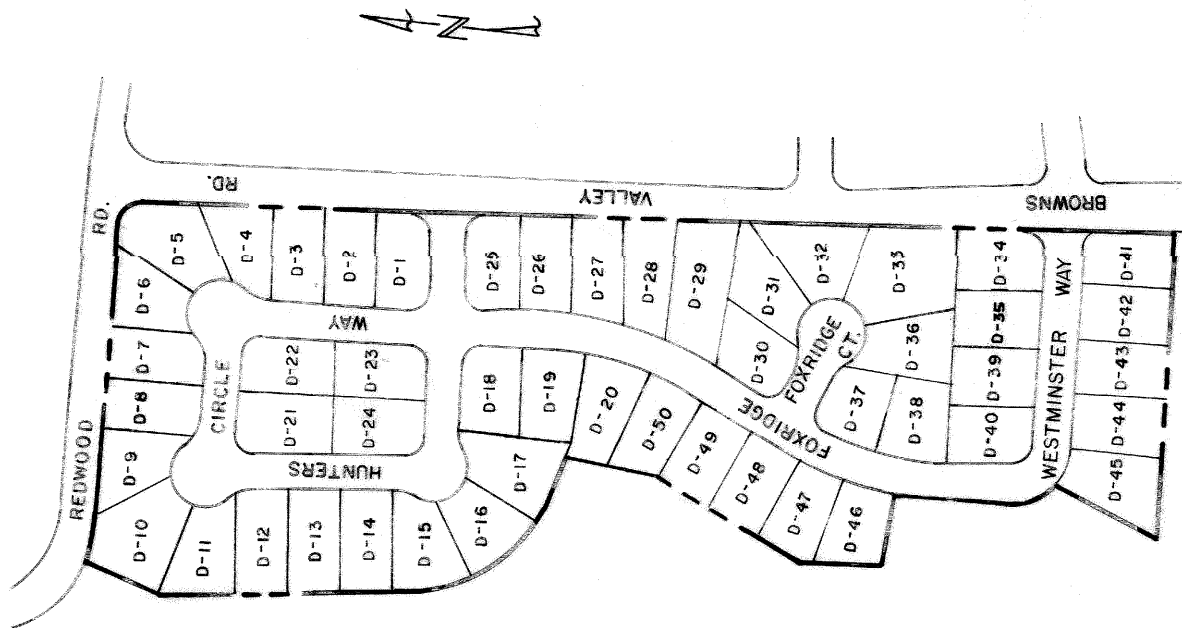


EXHIBIT "A"

ZONE D FOXRIDGE SUBDIVISION	
ASSESSMENT NUMBER	ASSESSORS PARCEL NUMBER
D-1	41-031-01
D-2	41-031-02
D-3	41-031-03
D-4	41-031-04
D-5	41-031-05
D-6	41-031-06
D-7	41-031-07
D-8	41-031-08
D-9	41-031-09
D-10	41-031-10
D-11	41-031-11
D-12	41-031-12
D-13	41-031-13
D-14	41-031-14
D-15	41-031-15
D-16	41-031-16
D-17	41-031-17
D-18	41-031-18
D-19	41-031-19
D-20	41-031-25
D-21	41-032-01
D-22	41-032-02
D-23	41-032-03
D-24	41-032-04
D-25	41-033-01
D-26	41-033-02
D-27	41-033-03
D-28	41-761-01
D-29	41-761-02
D-30	41-761-03
D-31	41-761-04
D-32	41-761-05
D-33	41-761-06
D-34	41-761-07
D-35	41-761-08
D-36	41-761-09
D-37	41-761-10
D-38	41-761-11
D-39	41-761-12
D-40	41-761-13
D-41	41-762-01
D-42	41-762-02
D-43	41-762-03
D-44	41-762-04
D-45	41-762-05
D-46	41-762-06
D-47	41-762-07
D-48	41-762-08
D-49	41-762-09
D-50	41-762-27

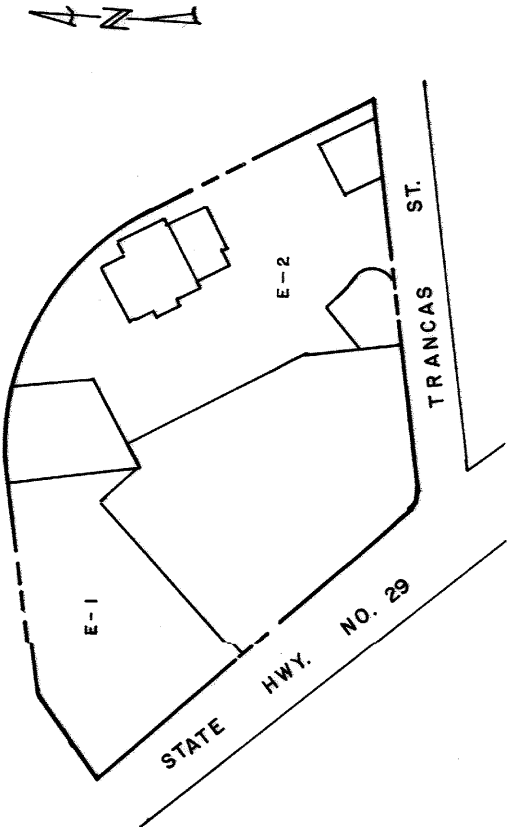
ZONE D
FOXRIDGE SUBDIVISION



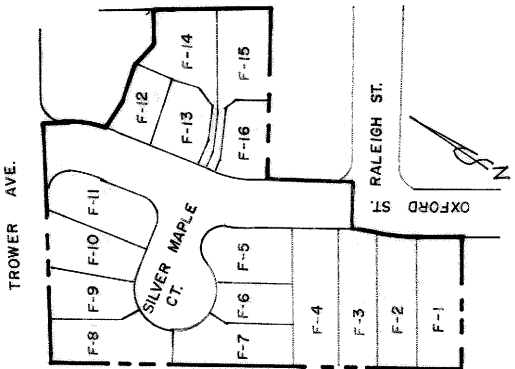
ZONE E TRANCAS STREET MEDIAN		
ASSESSMENT NUMBER	ASSESSORS PARCEL NUMBER	
E-1	1-370-23	
E-2	1-370-33	

ZONE F OXFORD GARDENS SUBDIVISION		
ASSESSMENT NUMBER	ASSESSORS PARCEL NUMBER	
F-1	7-181-38	
F-2	7-181-37	
F-3	7-181-36	
F-4	7-181-35	
F-5	7-181-34	
F-6	7-181-33	
F-7	7-181-32	
F-8	7-181-31	
F-9	7-181-30	
F-10	7-181-29	
F-11	7-181-28	
F-12	7-184-02	
F-13	7-184-03	
F-14	7-184-04	
F-15	7-184-05	
F-16	7-184-06	

ZONE E
TRANCAS STREET LANDSCAPED
MEDIAN

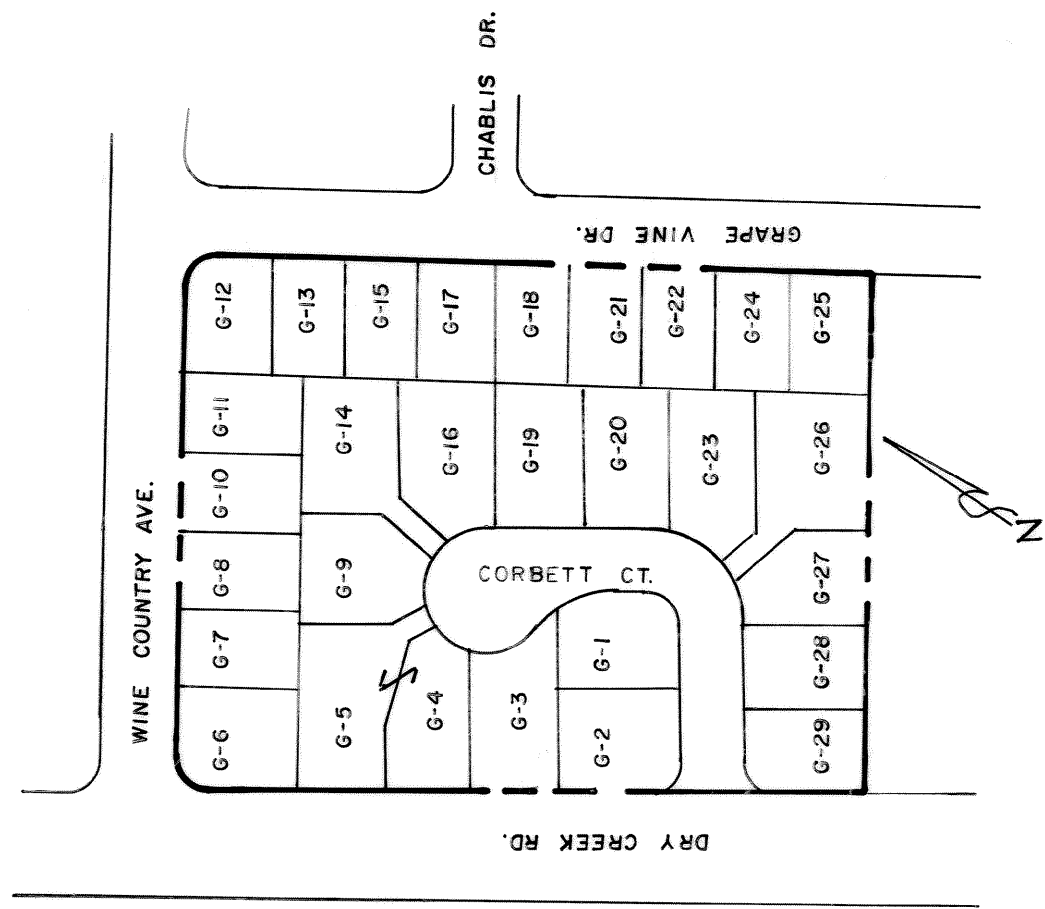


ZONE F
OXFORD GARDENS SUBDIVISION



ZONE G
GLENCAR ESTATES SUBDIVISION

ZONE G
GLENCAR ESTATES SUBDIVISION

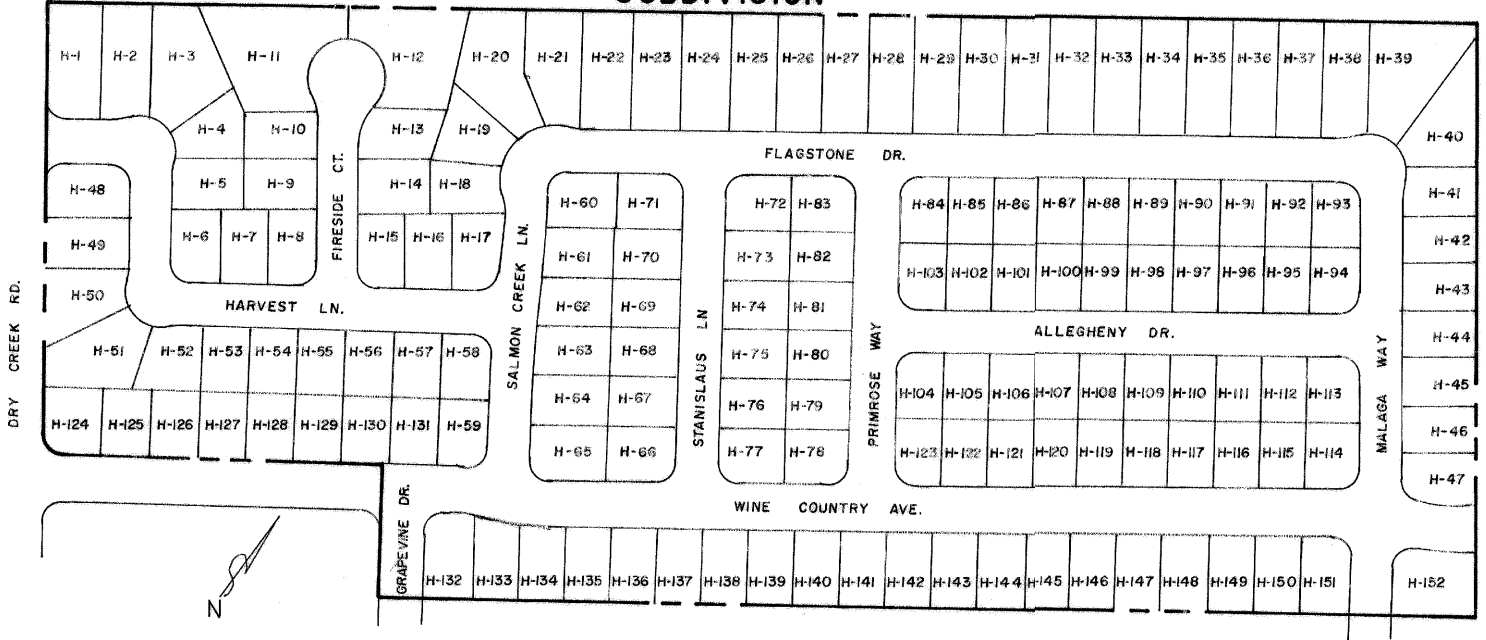


ASSESSMENT NUMBER	ASSESSORS PARCEL NUMBER
G-1	7-053-08
G-2	7-053-09
G-3	7-053-10
G-4	7-053-37
G-5	7-053-37
G-6	7-053-13
G-7	7-053-14
G-8	7-053-15
G-9	7-053-16
G-10	7-053-17
G-11	7-053-18
G-12	7-053-19
G-13	7-053-20
G-14	7-053-21
G-15	7-053-22
G-16	7-053-23
G-17	7-053-24
G-18	7-053-25
G-19	7-053-26
G-20	7-053-27
G-21	7-053-28
G-22	7-053-29
G-23	7-053-30
G-24	7-053-31
G-25	7-053-32
G-26	7-053-33
G-27	7-053-34
G-28	7-053-35
G-29	7-053-36

EXHIBIT "A"

ZONE "H"

DRY CREEK VILLAGE SUBDIVISION



ZONE H
DRY CREEK VILLAGE SUBDIVISION

ASSESSMENT NUMBER	ASSESSORS PARCEL NUMBER
H-11	7-331-11
H-12	7-331-12
H-13	7-331-13
H-14	7-331-14
H-15	7-331-15
H-16	7-331-16
H-17	7-331-17
H-18	7-331-18
H-19	7-331-19
H-20	7-331-20
H-21	7-331-21
H-22	7-331-22
H-23	7-331-23
H-24	7-331-24
H-25	7-331-25
H-26	7-331-26
H-27	7-331-27
H-28	7-331-01
H-29	7-331-02
H-30	7-331-03
H-31	7-331-04
H-32	7-331-05
H-33	7-331-06
H-34	7-331-07
H-35	7-331-08
H-36	7-331-09
H-37	7-331-10
H-38	7-331-11
H-39	7-331-12
H-40	7-331-13
H-41	7-331-14
H-42	7-331-15
H-43	7-331-16
H-44	7-331-17
H-45	7-331-18
H-46	7-331-19
H-47	7-331-20
H-48	7-331-21
H-49	7-331-22
H-50	7-331-23
H-51	7-331-24
H-52	7-331-25
H-53	7-331-26
H-54	7-331-27
H-55	7-331-28
H-56	7-331-29
H-57	7-331-30
H-58	7-331-31
H-59	7-331-32

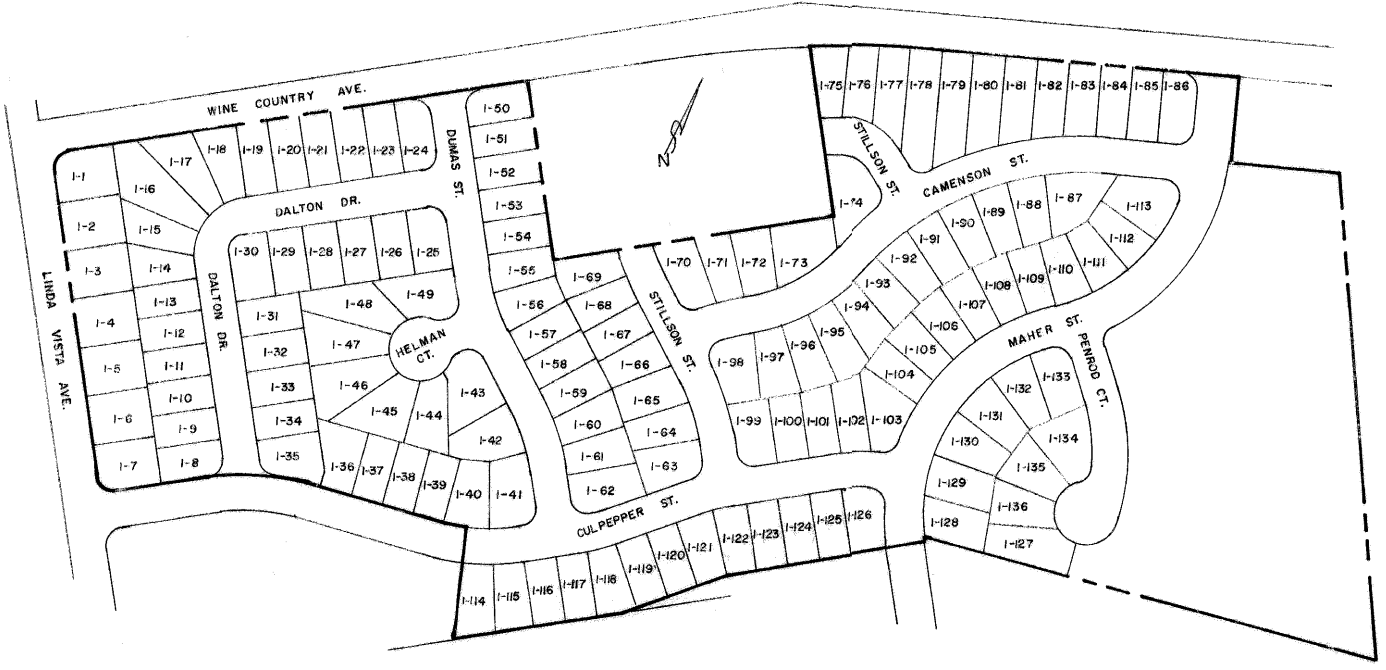
ZONE H
DRY CREEK VILLAGE SUBDIVISION

ASSESSMENT NUMBER	ASSESSORS PARCEL NUMBER
H-60	7-333-01
H-61	7-333-02
H-62	7-333-03
H-63	7-333-04
H-64	7-333-05
H-65	7-333-06
H-66	7-333-07
H-67	7-333-08
H-68	7-333-09
H-69	7-333-10
H-70	7-333-11
H-71	7-333-12
H-72	7-333-13
H-73	7-333-14
H-74	7-333-15
H-75	7-333-16
H-76	7-333-17
H-77	7-333-18
H-78	7-333-19
H-79	7-333-20
H-80	7-333-21
H-81	7-333-22
H-82	7-333-23
H-83	7-333-24
H-84	7-333-25
H-85	7-333-26
H-86	7-333-27
H-87	7-333-28
H-88	7-333-29
H-89	7-333-30
H-90	7-333-31
H-91	7-333-32
H-92	7-333-33
H-93	7-333-34
H-94	7-333-35
H-95	7-333-36
H-96	7-333-37
H-97	7-333-38
H-98	7-333-39
H-99	7-333-40
H-100	7-333-41
H-101	7-333-42
H-102	7-333-43
H-103	7-333-44
H-104	7-333-45
H-105	7-333-46
H-106	7-333-47
H-107	7-333-48
H-108	7-333-49

ZONE H
DRY CREEK VILLAGE SUBDIVISION

ASSESSMENT NUMBER	ASSESSORS PARCEL NUMBER
H-109	7-353-06
H-110	7-353-07
H-111	7-353-08
H-112	7-353-09
H-113	7-353-10
H-114	7-353-11
H-115	7-353-12
H-116	7-353-13
H-117	7-353-14
H-118	7-353-15
H-119	7-353-16
H-120	7-353-17
H-121	7-353-18
H-122	7-353-19
H-123	7-353-20
H-124	7-353-21
H-125	7-353-22
H-126	7-353-23
H-127	7-353-24
H-128	7-353-25
H-129	7-353-26
H-130	7-353-27
H-131	7-353-28
H-132	7-353-29
H-133	7-353-30
H-134	7-353-31
H-135	7-353-32
H-136	7-353-33
H-137	7-353-34
H-138	7-353-35
H-139	7-353-36
H-140	7-353-37
H-141	7-353-38
H-142	7-353-39
H-143	7-353-40
H-144	7-353-41
H-145	7-353-42
H-146	7-353-43
H-147	7-353-44
H-148	7-353-45
H-149	7-353-46
H-150	7-353-47
H-151	7-353-48
H-152	7-353-49

ZONE EXHIBIT "A"
RANCHO LAS FLORES
SUBDIVISION



ZONE 1
RANCHO LAS FLORES SUBDIVISION

ASSESSMENT NUMBER	ASSESSORS PARCEL NUMBER
1-1	7-071-01
1-2	7-071-02
1-3	7-071-03
1-4	7-071-04
1-5	7-071-05
1-6	7-071-06
1-7	7-071-07
1-8	7-071-08
1-9	7-071-09
1-10	7-071-10
1-11	7-071-11
1-12	7-071-12
1-13	7-071-13
1-14	7-071-14
1-15	7-071-15
1-16	7-071-16
1-17	7-071-17
1-18	7-071-18
1-19	7-071-19
1-20	7-071-20
1-21	7-071-21
1-22	7-071-22
1-23	7-071-23
1-24	7-071-24
1-25	7-072-01
1-26	7-072-25
1-27	7-072-24
1-28	7-072-23
1-29	7-072-22
1-30	7-072-21
1-31	7-072-20
1-32	7-072-19
1-33	7-072-18
1-34	7-072-17
1-35	7-072-16
1-36	7-072-15
1-37	7-072-14
1-38	7-072-13
1-39	7-072-12
1-40	7-072-11
1-41	7-072-10
1-42	7-072-09
1-43	7-072-08
1-44	7-072-07
1-45	7-072-06
1-46	7-072-05
1-47	7-072-04
1-48	7-072-03
1-49	7-072-02

ZONE 1
RANCHO LAS FLORES SUBDIVISION

ASSESSMENT NUMBER	ASSESSORS PARCEL NUMBER
1-50	7-073-20
1-51	7-073-19
1-52	7-073-18
1-53	7-073-17
1-54	7-073-16
1-55	7-073-15
1-56	7-073-14
1-57	7-073-13
1-58	7-073-12
1-59	7-073-11
1-60	7-073-10
1-61	7-073-09
1-62	7-073-08
1-63	7-073-07
1-64	7-073-06
1-65	7-073-05
1-66	7-073-04
1-67	7-073-03
1-68	7-073-02
1-69	7-073-01
1-70	7-342-06
1-71	7-342-07
1-72	7-342-03
1-73	7-342-02
1-74	7-342-01
1-75	7-341-01
1-76	7-341-02
1-77	7-341-03
1-78	7-341-04
1-79	7-341-05
1-80	7-341-06
1-81	7-341-07
1-82	7-341-08
1-83	7-341-09
1-84	7-341-10
1-85	7-341-11
1-86	7-341-12
1-87	7-343-12
1-88	7-343-11
1-89	7-343-10
1-90	7-343-09
1-91	7-343-08
1-92	7-343-07
1-93	7-343-06
1-94	7-343-05
1-95	7-343-04
1-96	7-343-03
1-97	7-343-02
1-98	7-343-01

ZONE 1
RANCHO LAS FLORES SUBDIVISION

ASSESSMENT NUMBER	ASSESSORS PARCEL NUMBER
1-99	7-343-27
1-100	7-343-26
1-101	7-343-25
1-102	7-343-24
1-103	7-343-23
1-104	7-343-22
1-105	7-343-21
1-106	7-343-20
1-107	7-343-19
1-108	7-343-18
1-109	7-343-17
1-110	7-343-16
1-111	7-343-15
1-112	7-343-14
1-113	7-343-13
1-114	7-074-02
1-115	7-074-03
1-116	7-074-04
1-117	7-074-05
1-118	7-074-06
1-119	7-074-07
1-120	7-074-08
1-121	7-074-09
1-122	7-344-01
1-123	7-344-02
1-124	7-344-03
1-125	7-344-04
1-126	7-344-05
1-127	7-345-03
1-128	7-345-12
1-129	7-345-11
1-130	7-345-10
1-131	7-345-13
1-132	7-345-14
1-133	7-345-07
1-134	7-345-06
1-135	7-345-05
1-136	7-345-04

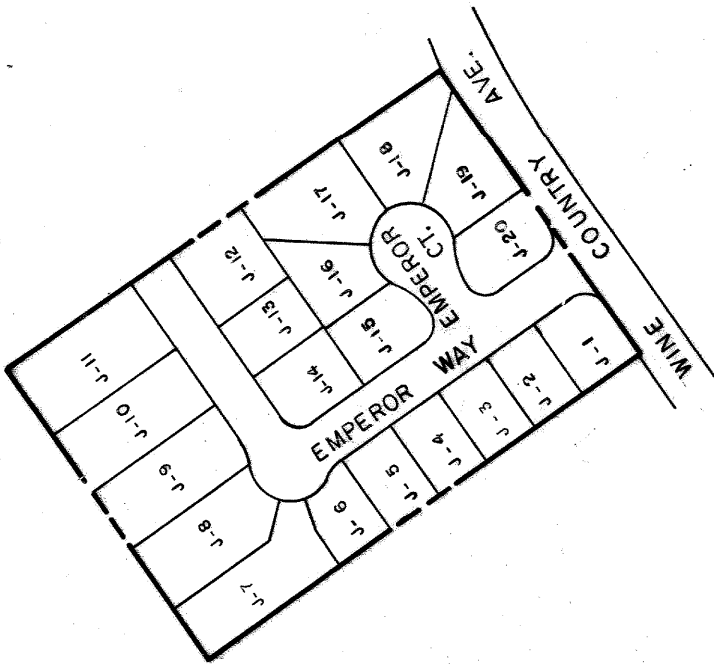
ZONE K
HYDE PARK II SUBDIVISION

ASSESSMENT NUMBER	ASSESSORS PARCEL NUMBER
K-1	38-227-01
K-2	38-227-02
K-3	38-224-10
K-4	38-224-09
K-5	38-224-08
K-6	38-224-07
K-7	38-224-06
K-8	38-224-05
K-9	38-224-04
K-10	38-223-15
K-11	38-223-14
K-12	38-223-13
K-13	38-223-12
K-14	38-223-11
K-15	38-223-10
K-16	38-223-09
K-17	38-223-08
K-18	38-223-07
K-19	38-225-01
K-20	38-225-02
K-21	38-225-03
K-22	38-225-04
K-23	38-225-05
K-24	38-225-06
K-25	38-225-07
K-26	38-225-08
K-27	38-225-09
K-28	38-225-10
K-29	38-225-11
K-30	38-225-12
K-31	38-225-13
K-32	38-225-14
K-33	38-225-15
K-34	38-225-16
K-35	38-225-17
K-36	38-225-18
K-37	38-225-19
K-38	38-225-20
K-39	38-225-21
K-40	38-225-22
K-41	38-226-01
K-42	38-226-02
K-43	38-226-03
K-44	38-226-04

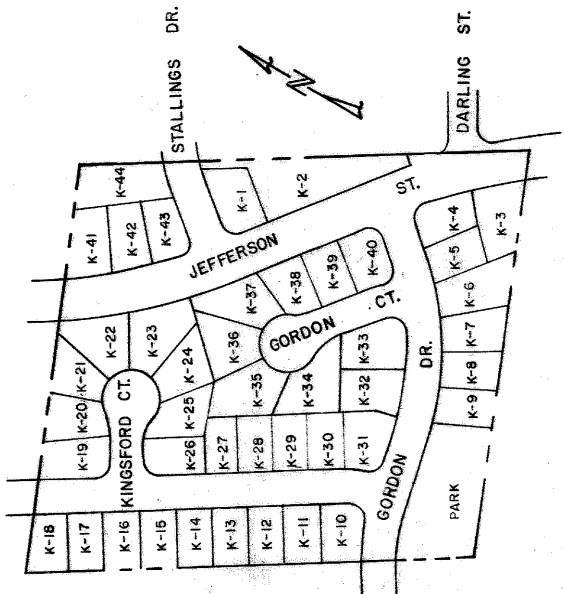
ZONE J
WOODSIDE GARDENS

ASSESSMENT NUMBER	ASSESSORS PARCEL NUMBER
J-1	35-511-11
J-2	35-511-10
J-3	35-511-09
J-4	35-511-08
J-5	35-511-07
J-6	35-511-06
J-7	35-511-05
J-8	35-511-04
J-9	35-511-03
J-10	35-511-02
J-11	35-511-01
J-12	35-512-01
J-13	35-512-02
J-14	35-512-03
J-15	35-512-04
J-16	35-512-05
J-17	35-512-06
J-18	35-512-07
J-19	35-512-08
J-20	35-512-09

ZONE J
WOODSIDE GARDENS

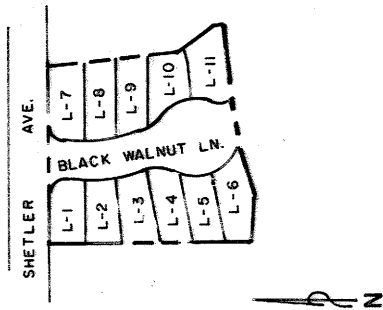


ZONE K
HYDE PARK II SUBDIVISION



ZONE L
WALNUT GROVE SUBDIVISION UNIT I

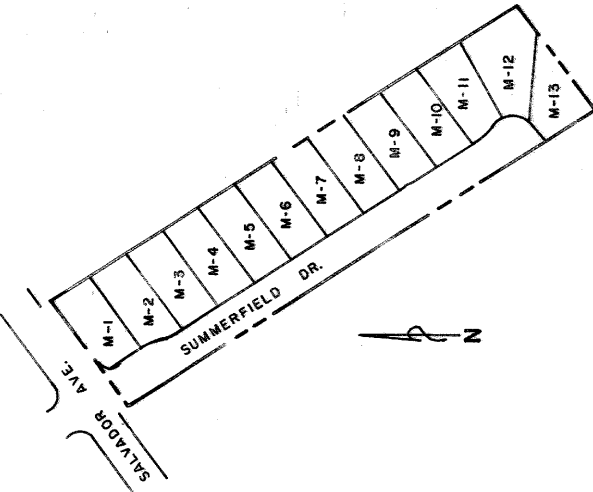
ZONE L
WALNUT GROVE SUBDIVISION UNIT I



ASSESSMENT NUMBER	ASSESSORS PARCEL NUMBER
L-1	46-320-14
L-2	46-320-15
L-3	46-320-16
L-4	46-320-17
L-5	46-320-18
L-6	46-320-19
L-7	46-320-20
L-8	46-320-21
L-9	46-320-22
L-10	46-320-23
L-11	46-320-24

ZONE M
VINEYARD VISTA ESTATES SUBDIVISION

ZONE M
VINEYARD VISTA ESTATES SUBD.



ASSESSMENT NUMBER	ASSESSORS PARCEL NUMBER
M-1	38-590-1
M-2	38-590-2
M-3	38-590-3
M-4	38-590-4
M-5	38-590-5
M-6	38-590-6
M-7	38-590-7
M-8	38-590-8
M-9	38-590-9
M-10	38-590-10
M-11	38-590-11
M-12	38-590-12
M-13	38-590-13

EXHIBIT "A"

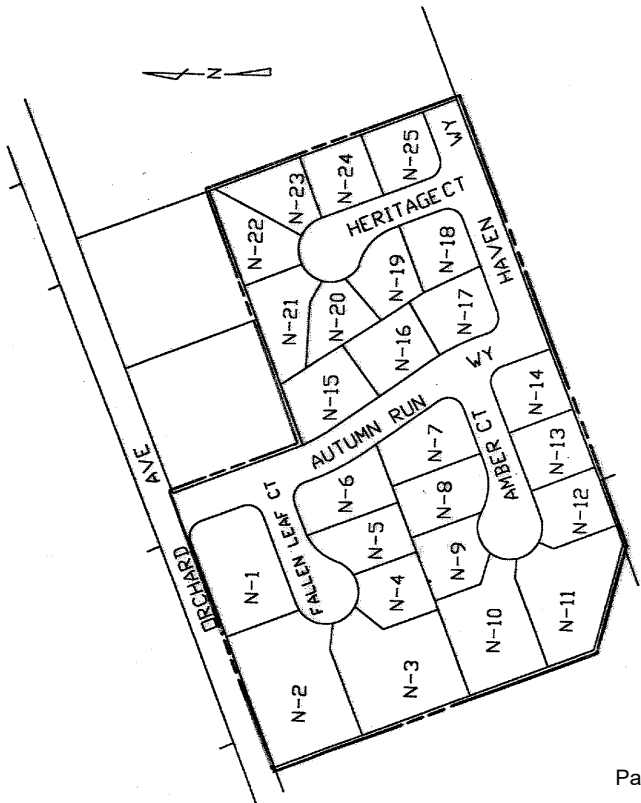
ZONE N
ORCHARD ESTATES SUBDIVISION

ASSESSMENT NUMBER	ASSESSORS PARCEL NUMBER
N-1	35-532-01
N-2	35-532-02
N-3	35-532-15
N-4	35-532-16
N-5	35-532-17
N-6	35-532-18
N-7	35-532-07
N-8	35-532-19
N-9	35-532-20
N-10	35-532-21
N-11	35-532-11
N-12	35-532-12
N-13	35-532-13
N-14	35-532-14
N-15	35-531-11
N-16	35-531-16
N-17	35-531-15
N-18	35-531-14
N-19	35-531-13
N-20	35-531-12
N-21	35-531-05
N-22	35-531-04
N-23	35-531-03
N-24	35-531-02
N-25	35-531-01

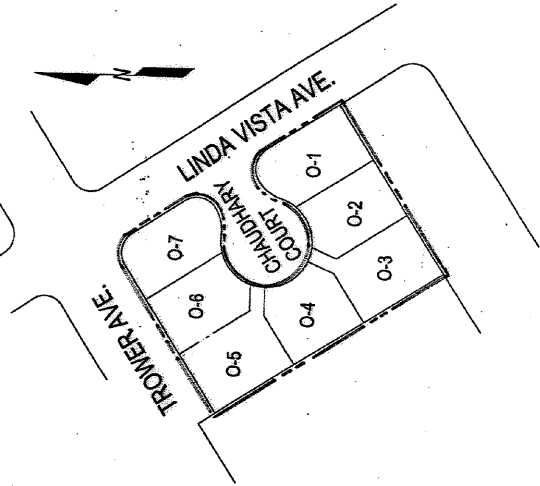
ZONE O
CHAUDHARY ESTATES SUBDIVISION

ASSESSMENT NUMBER	ASSESSORS PARCEL NUMBER
O-1	007-172-27
O-2	007-172-28
O-3	007-172-29
O-4	007-172-30
O-5	007-172-31
O-6	007-172-32
O-7	007-172-33

ZONE N
ORCHARD ESTATES SUBDIVISION



ZONE O
CHAUDHARY ESTATES



ZONE P
MILLS SUBDIVISION

ZONE P
MILLS SUBDIVISION

ASSESSMENT NUMBER	ASSESSORS PARCEL NUMBER
P-1	50-292-16
P-2	50-292-17
P-3	50-292-18
P-4	50-292-19
P-5	50-292-20
P-6	50-292-21
P-6	50-292-21
P-7	50-292-22
P-7	50-292-23

