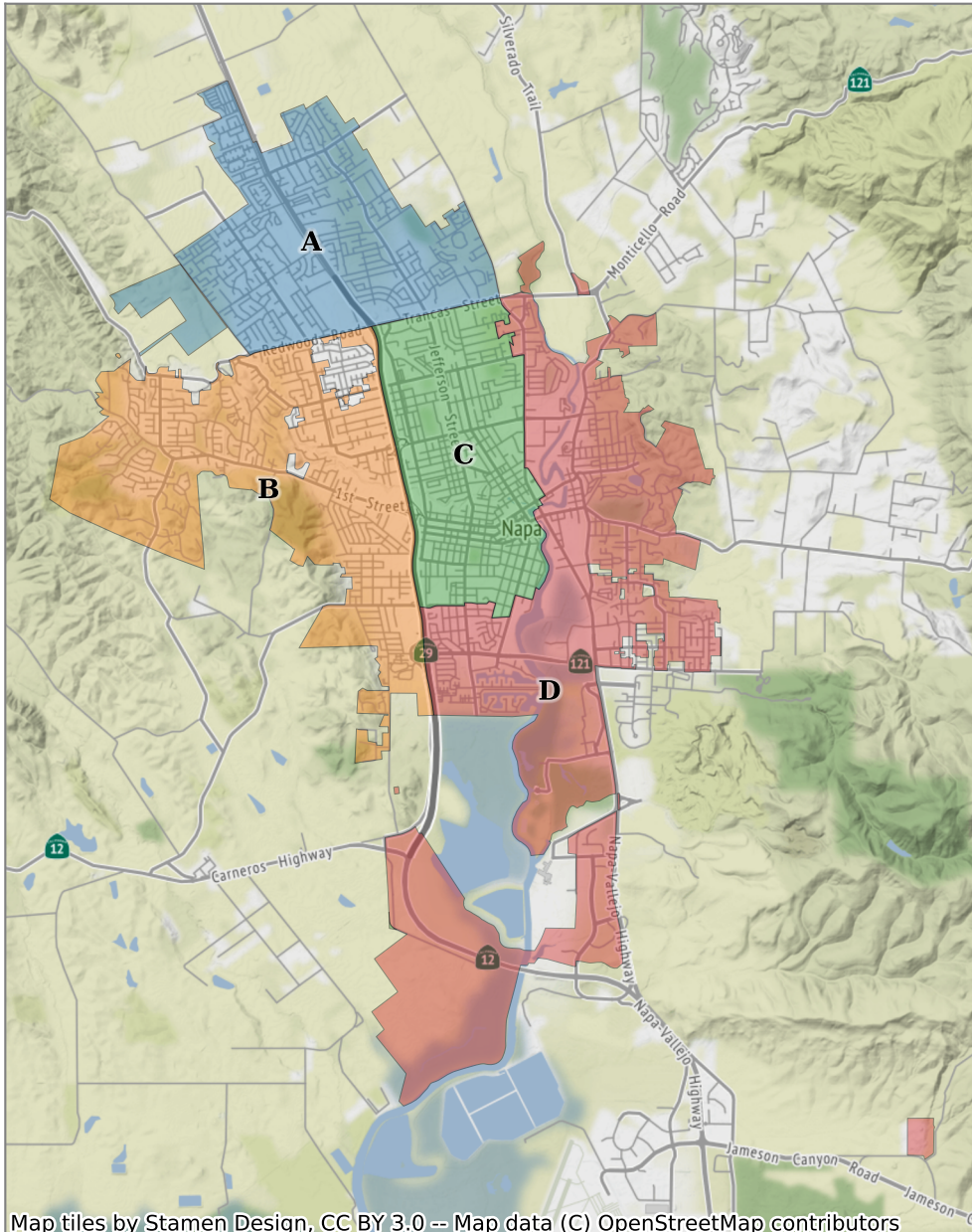


City of Napa

Plan B

District Overview



Base 2010 Census

	A	B	C	D
Population	19,340	20,221	18,954	18,394
Deviation	113	994	-273	-833
Deviation %	0.6%	5.2%	-1.4%	-4.3%
No Eth	13,255	12,301	9,500	10,696
No Eth %	68.5%	60.8%	50.1%	58.1%
Latino	5,449	7,456	9,032	6,979
Latino %	28.2%	36.9%	47.7%	37.9%
Asian	528	348	280	599
Asian %	2.7%	1.7%	1.5%	3.3%
Black	108	116	142	120
Black %	0.6%	0.6%	0.7%	0.7%

Citizen Voting Age Population (CVAP)

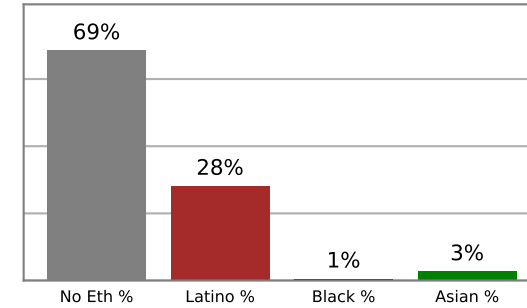
	A	B	C	D
Total US 18+	13,891	12,841	10,987	13,420
No Eth CVAP	9,977	10,111	7,362	9,241
No Eth CVAP %	71.8%	78.7%	67.0%	68.9%
Latino CVAP	3,313	2,408	3,159	3,706
Latino CVAP %	23.8%	18.8%	28.8%	27.6%
Asian CVAP	572	249	270	345
Asian CVAP %	4.1%	1.9%	2.5%	2.6%
Black CVAP	29	73	196	128
Black CVAP %	0.2%	0.6%	1.8%	1.0%

City of Napa

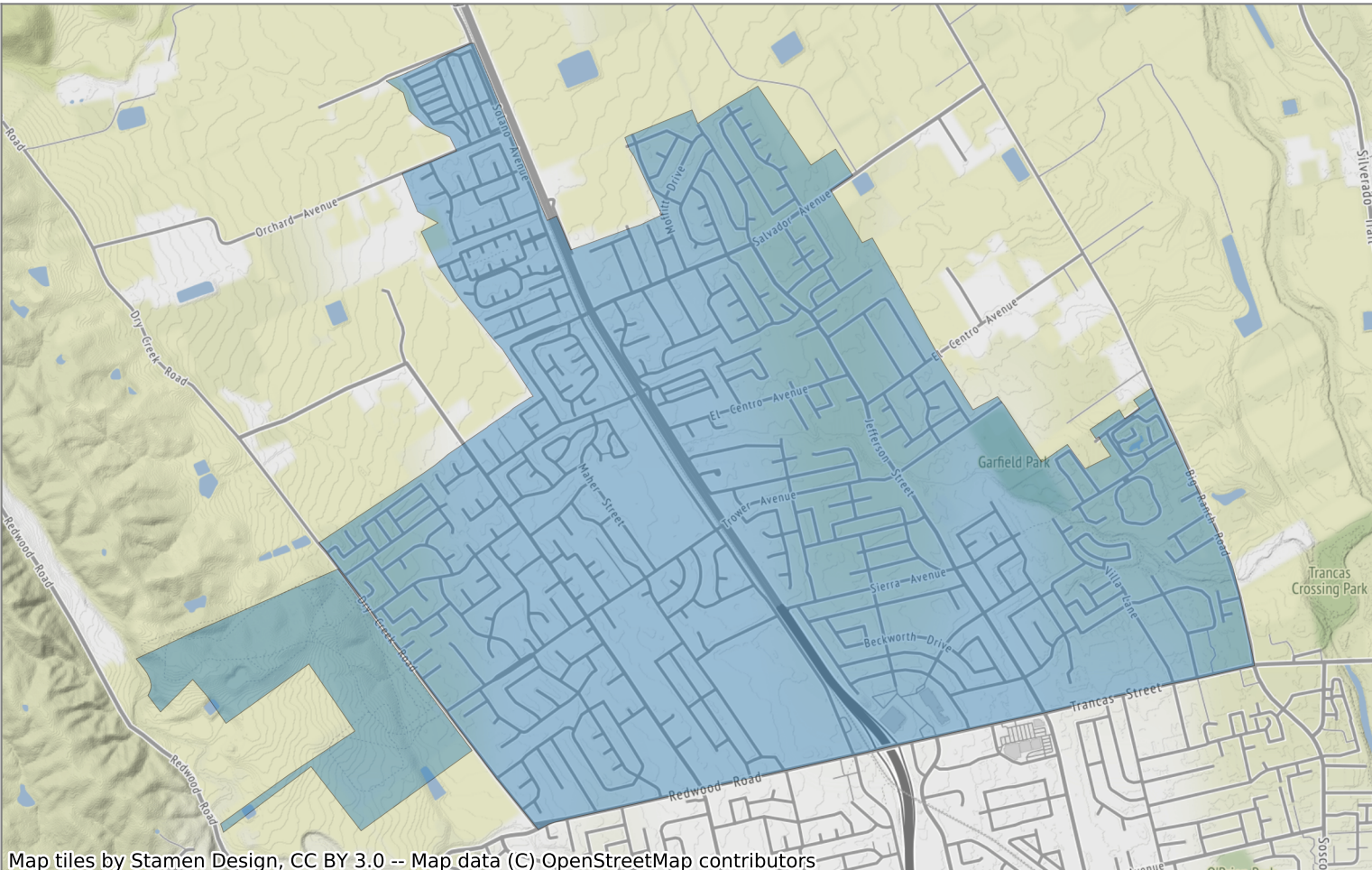
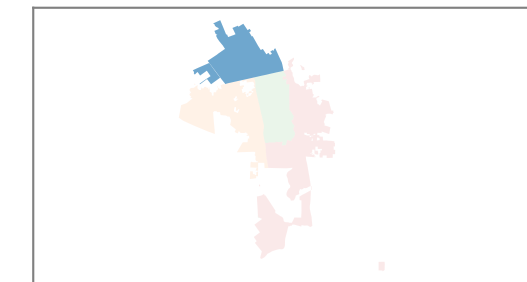
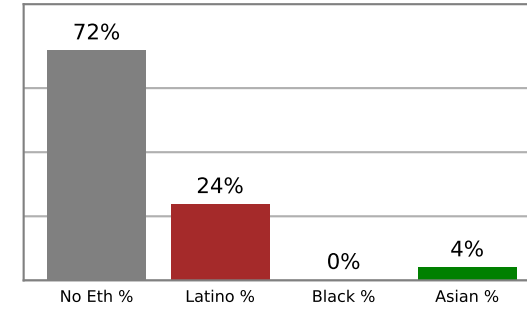
Plan B

District A

2010 Census



Citizen Voting Age Population



Map tiles by Stamen Design, CC BY 3.0 -- Map data (C) OpenStreetMap contributors

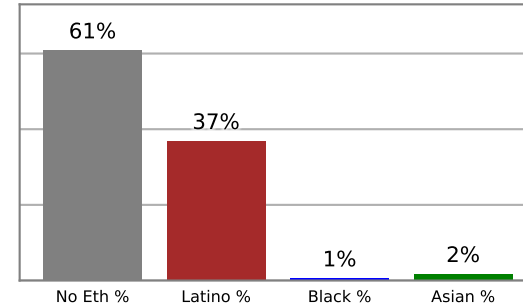
Population	Deviation	Deviation %	No Eth	No Eth %	Latino	Latino %	Asian	Asian %	Black	Black %
19,340	113	0.6%	13,255	68.5%	5,449	28.2%	528	2.7%	108	0.6%
Total US 18+	No Eth CVAP	No Eth CVAP %	Latino CVAP	Latino CVAP %	Asian CVAP	Asian CVAP %	Black CVAP	Black CVAP %		
13,891	9,977	71.8%	3,313	23.8%	572	4.1%	29	0.2%		

City of Napa

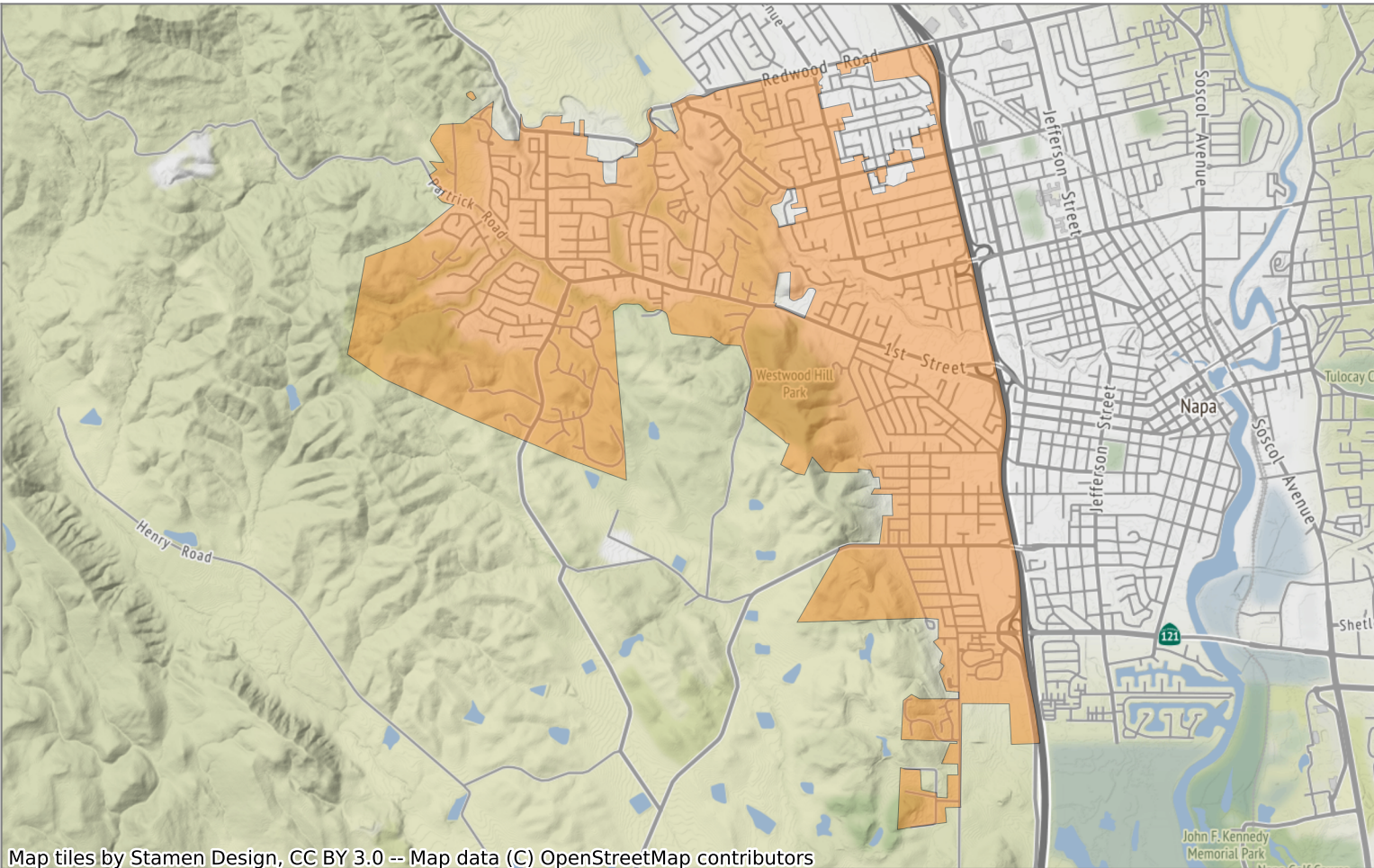
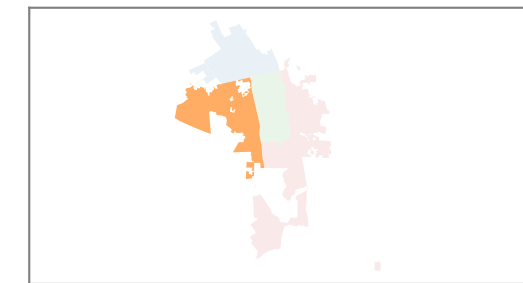
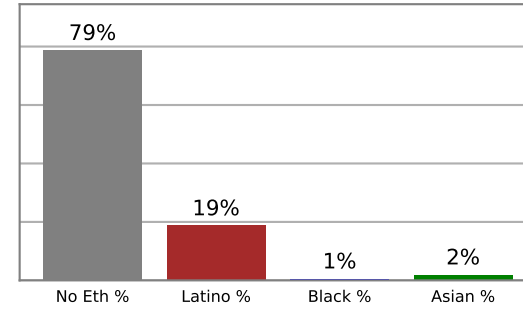
Plan B

District B

2010 Census



Citizen Voting Age Population



Map tiles by Stamen Design, CC BY 3.0 -- Map data (C) OpenStreetMap contributors

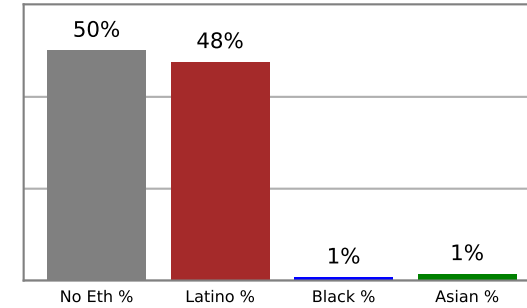
Population	Deviation	Deviation %	No Eth	No Eth %	Latino	Latino %	Asian	Asian %	Black	Black %
20,221	994	5.2%	12,301	60.8%	7,456	36.9%	348	1.7%	116	0.6%
Total US 18+	No Eth CVAP	No Eth CVAP %	Latino CVAP	Latino CVAP %	Asian CVAP	Asian CVAP %	Black CVAP	Black CVAP %		
12,841	10,111	78.7%	2,408	18.8%	249	1.9%	73	0.6%		

City of Napa

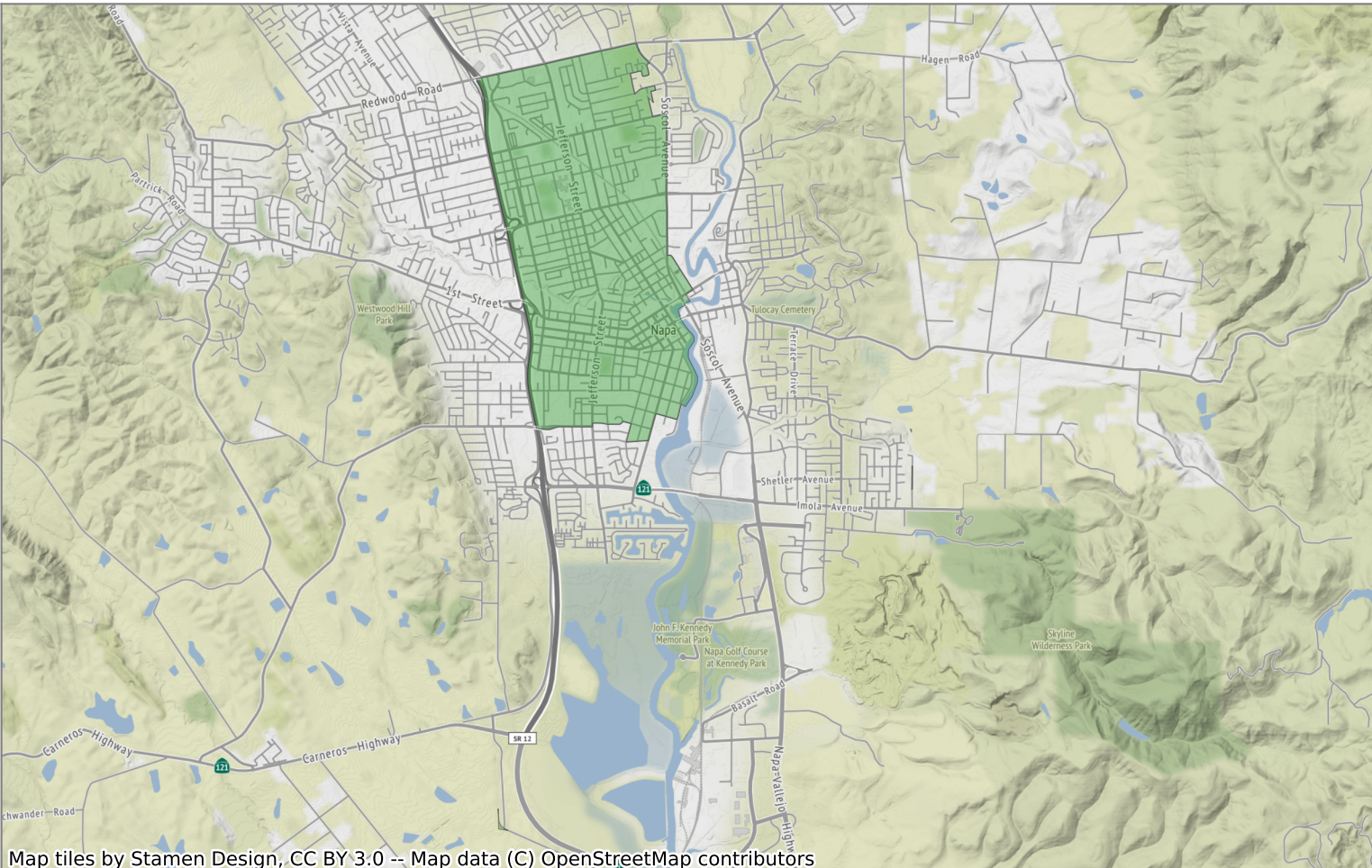
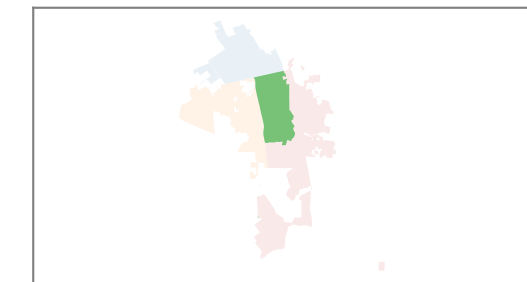
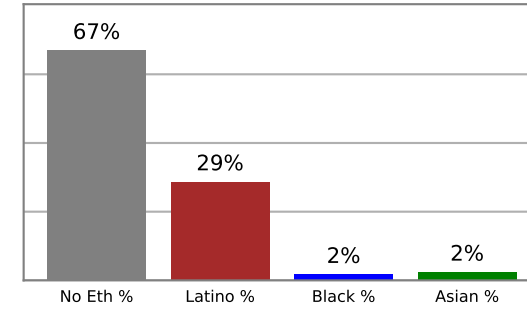
Plan B

District C

2010 Census



Citizen Voting Age Population



Map tiles by Stamen Design, CC BY 3.0 -- Map data (C) OpenStreetMap contributors

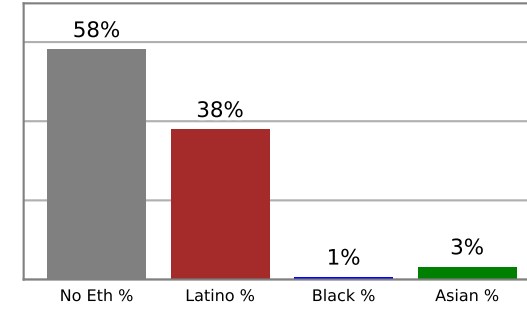
Population	Deviation	Deviation %	No Eth	No Eth %	Latino	Latino %	Asian	Asian %	Black	Black %
18,954	-273	-1.4%	9,500	50.1%	9,032	47.7%	280	1.5%	142	0.7%
Total US 18+	No Eth CVAP	No Eth CVAP %	Latino CVAP	Latino CVAP %	Asian CVAP	Asian CVAP %	Black CVAP	Black CVAP %		
10,987	7,362	67.0%	3,159	28.8%	270	2.5%	196	1.8%		

City of Napa

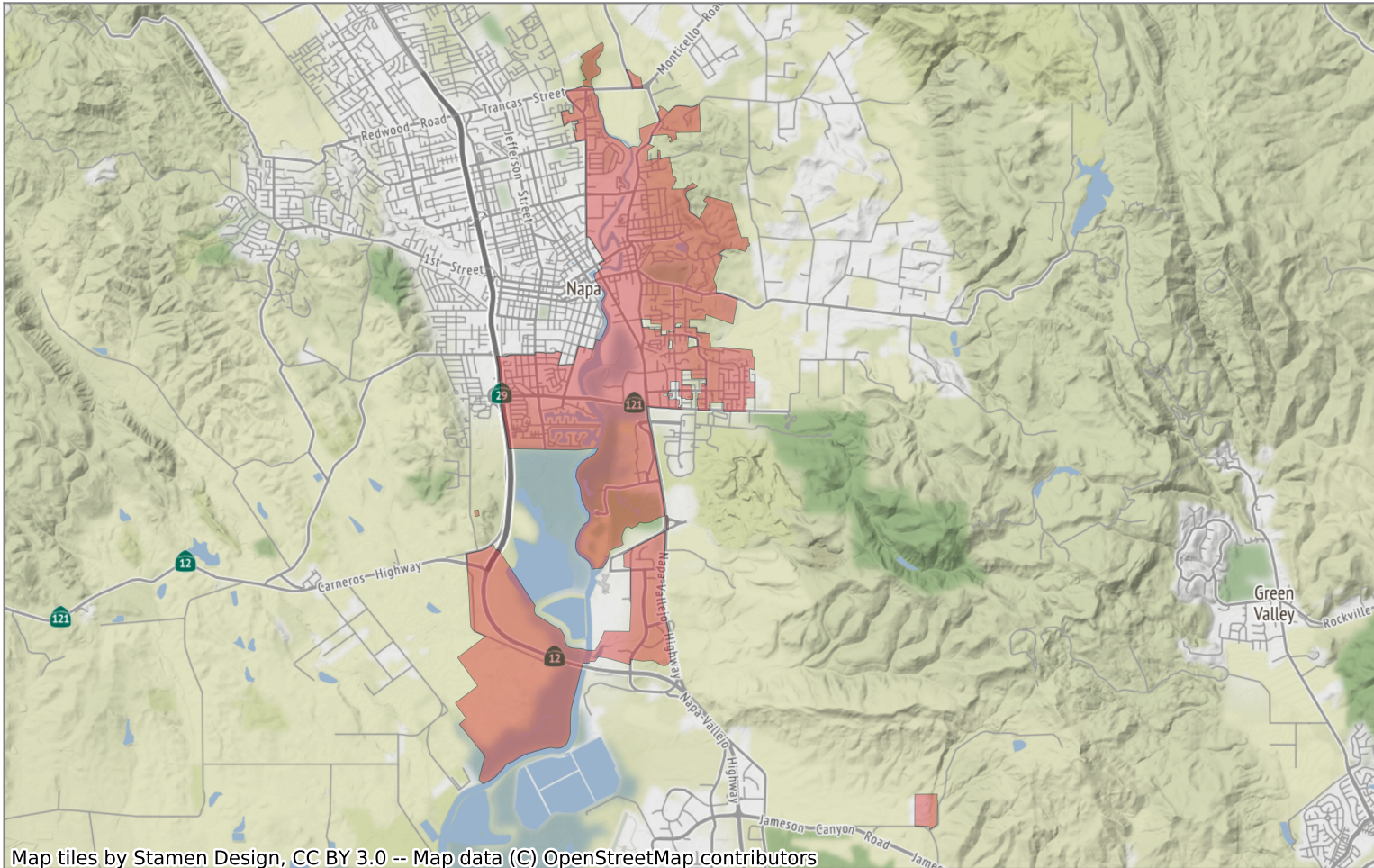
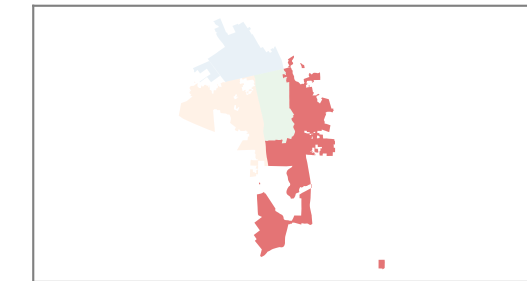
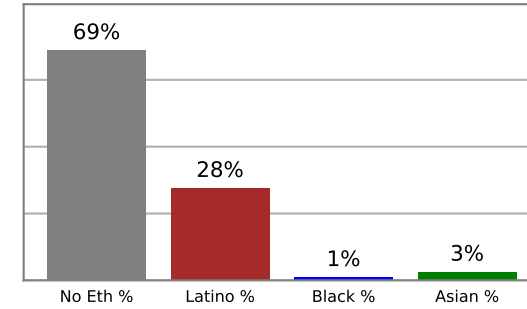
Plan B

District D

2010 Census



Citizen Voting Age Population



Map tiles by Stamen Design, CC BY 3.0 -- Map data (C) OpenStreetMap contributors

Population	Deviation	Deviation %	No Eth	No Eth %	Latino	Latino %	Asian	Asian %	Black	Black %
18,394	-833	-4.3%	10,696	58.1%	6,979	37.9%	599	3.3%	120	0.7%
Total US 18+	No Eth CVAP	No Eth CVAP %	Latino CVAP	Latino CVAP %	Asian CVAP	Asian CVAP %	Black CVAP	Black CVAP %		
13,420	9,241	68.9%	3,706	27.6%	345	2.6%	128	1.0%		