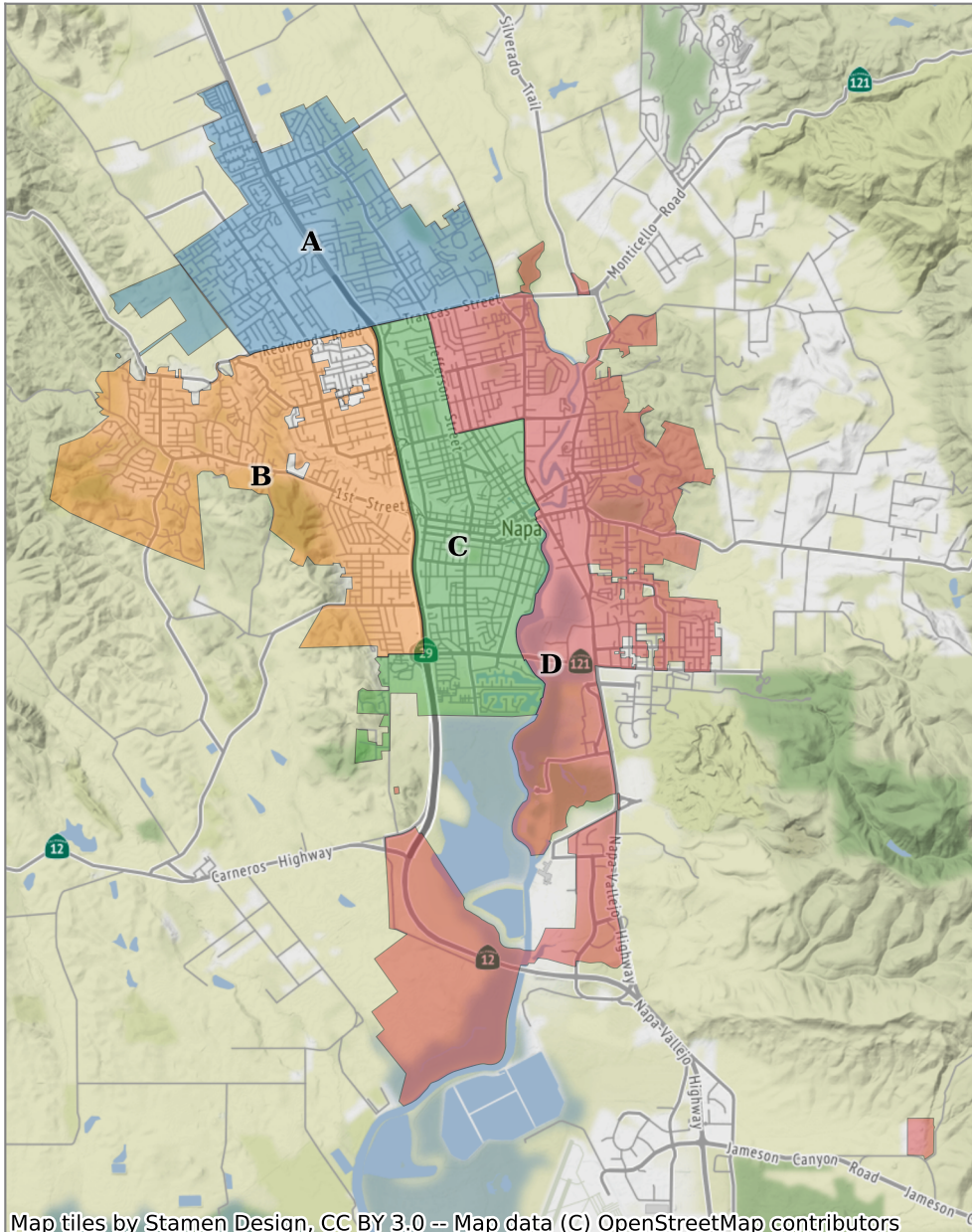


# City of Napa

## Plan A

### District Overview



### Base 2010 Census

	A	B	C	D
Population	19,340	19,376	19,282	18,911
Deviation	115	151	57	-314
Deviation %	0.6%	0.8%	0.3%	-1.6%
No Eth	13,255	11,620	10,324	10,553
No Eth %	68.5%	60.0%	53.5%	55.8%
Latino	5,449	7,318	8,462	7,687
Latino %	28.2%	37.8%	43.9%	40.6%
Asian	528	325	367	535
Asian %	2.7%	1.7%	1.9%	2.8%
Black	108	113	129	136
Black %	0.6%	0.6%	0.7%	0.7%

### Citizen Voting Age Population (CVAP)

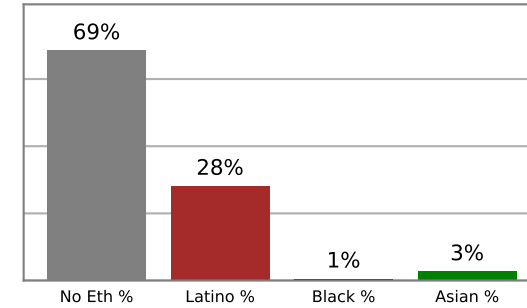
	A	B	C	D
Total US 18+	13,891	12,232	12,053	12,963
No Eth CVAP	9,977	9,626	8,320	8,768
No Eth CVAP %	71.8%	78.7%	69.0%	67.6%
Latino CVAP	3,313	2,324	3,399	3,550
Latino CVAP %	23.8%	19.0%	28.2%	27.4%
Asian CVAP	572	209	169	486
Asian CVAP %	4.1%	1.7%	1.4%	3.7%
Black CVAP	29	73	165	159
Black CVAP %	0.2%	0.6%	1.4%	1.2%

# City of Napa

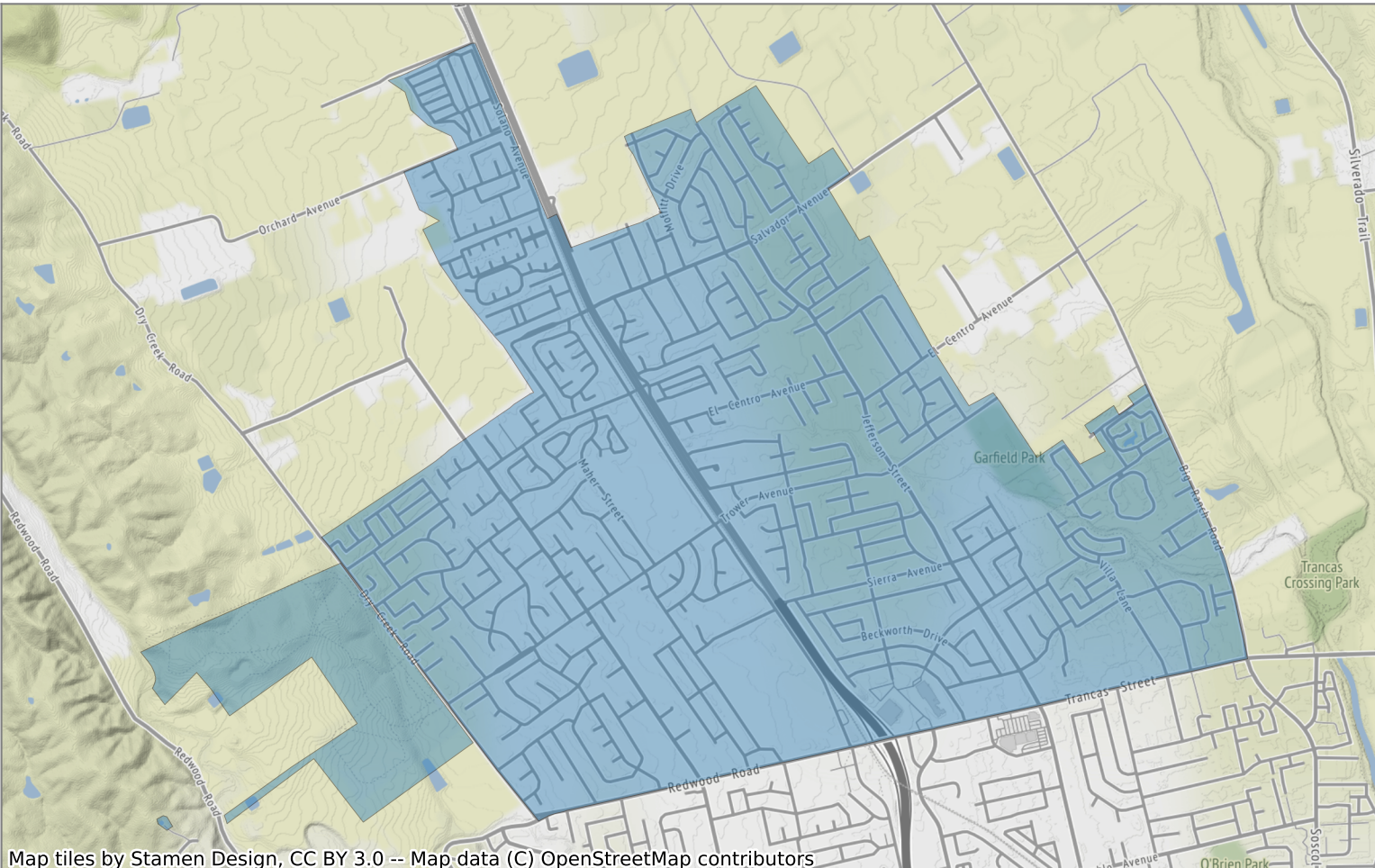
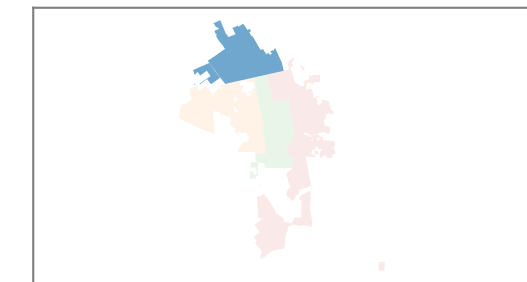
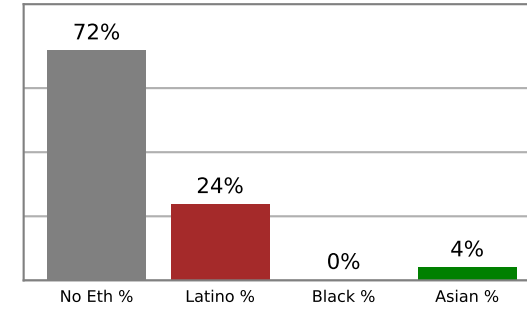
## Plan A

### District A

### 2010 Census



### Citizen Voting Age Population



Population	Deviation	Deviation %	No Eth	No Eth %	Latino	Latino %	Asian	Asian %	Black	Black %
19,340	115	0.6%	13,255	68.5%	5,449	28.2%	528	2.7%	108	0.6%
Total US 18+	No Eth CVAP	No Eth CVAP %	Latino CVAP	Latino CVAP %	Asian CVAP	Asian CVAP %	Black CVAP	Black CVAP %		
13,891	9,977	71.8%	3,313	23.8%	572	4.1%	29	0.2%		

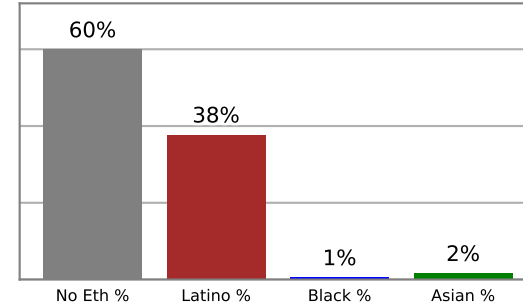


# City of Napa

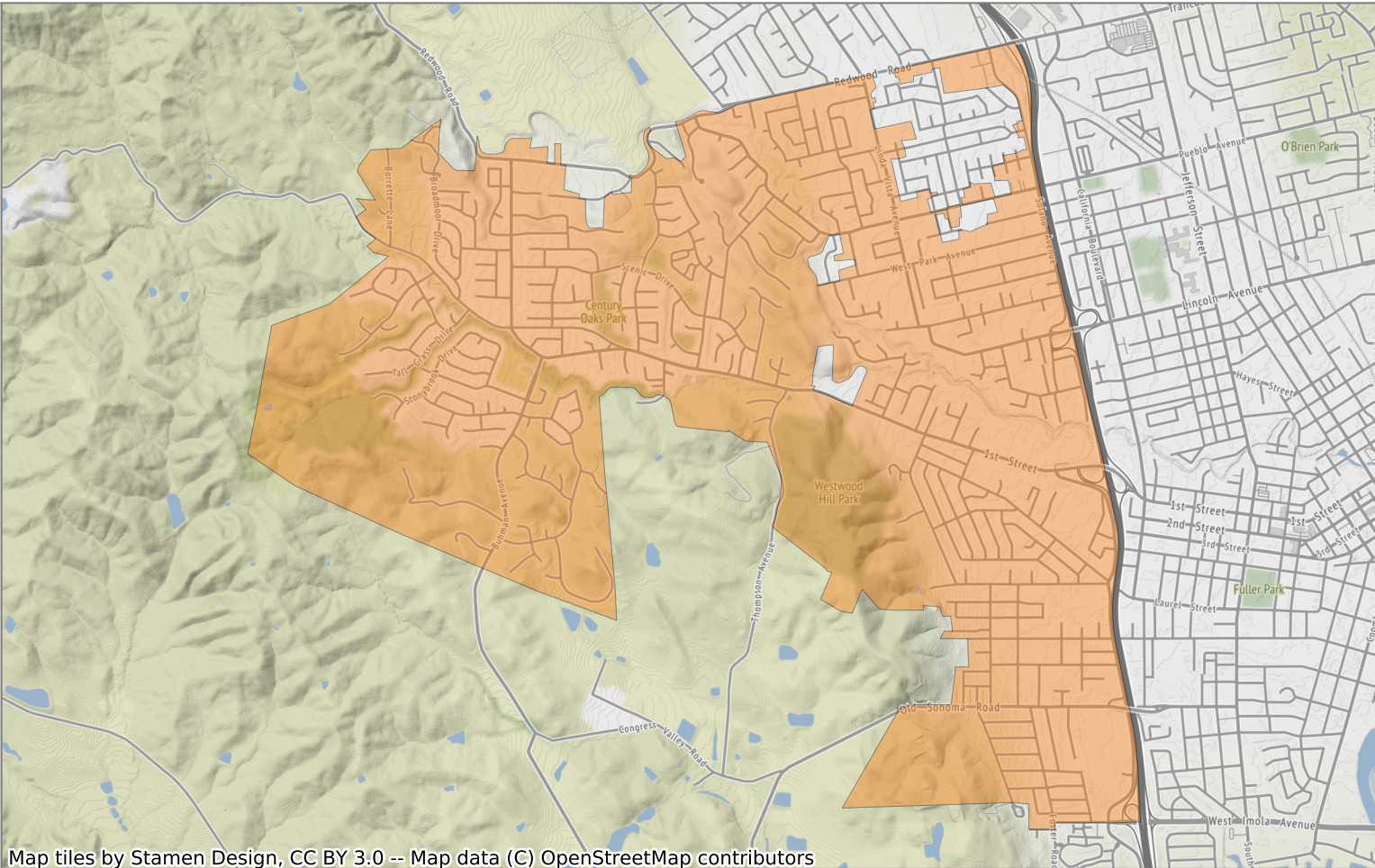
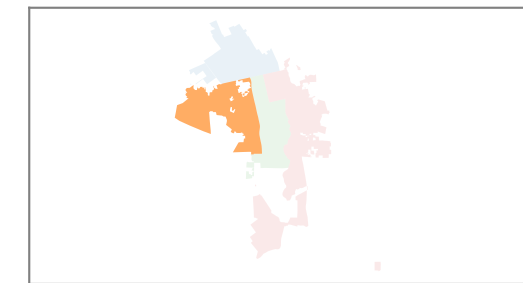
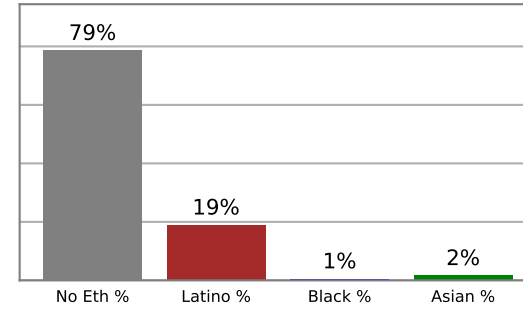
## Plan A

### District B

### 2010 Census



### Citizen Voting Age Population



Map tiles by Stamen Design, CC BY 3.0 -- Map data (C) OpenStreetMap contributors

Population	Deviation	Deviation %	No Eth	No Eth %	Latino	Latino %	Asian	Asian %	Black	Black %
19,376	151	0.8%	11,620	60.0%	7,318	37.8%	325	1.7%	113	0.6%
Total US 18+	No Eth CVAP	No Eth CVAP %	Latino CVAP	Latino CVAP %	Asian CVAP	Asian CVAP %	Black CVAP	Black CVAP %		
12,232	9,626	78.7%	2,324	19.0%	209	1.7%	73	0.6%		

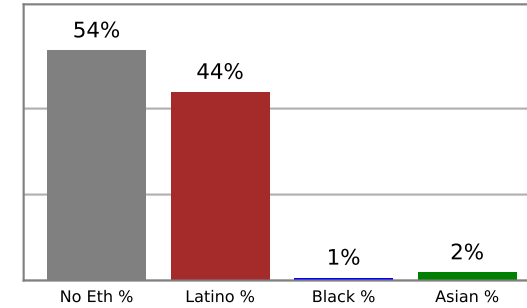


# City of Napa

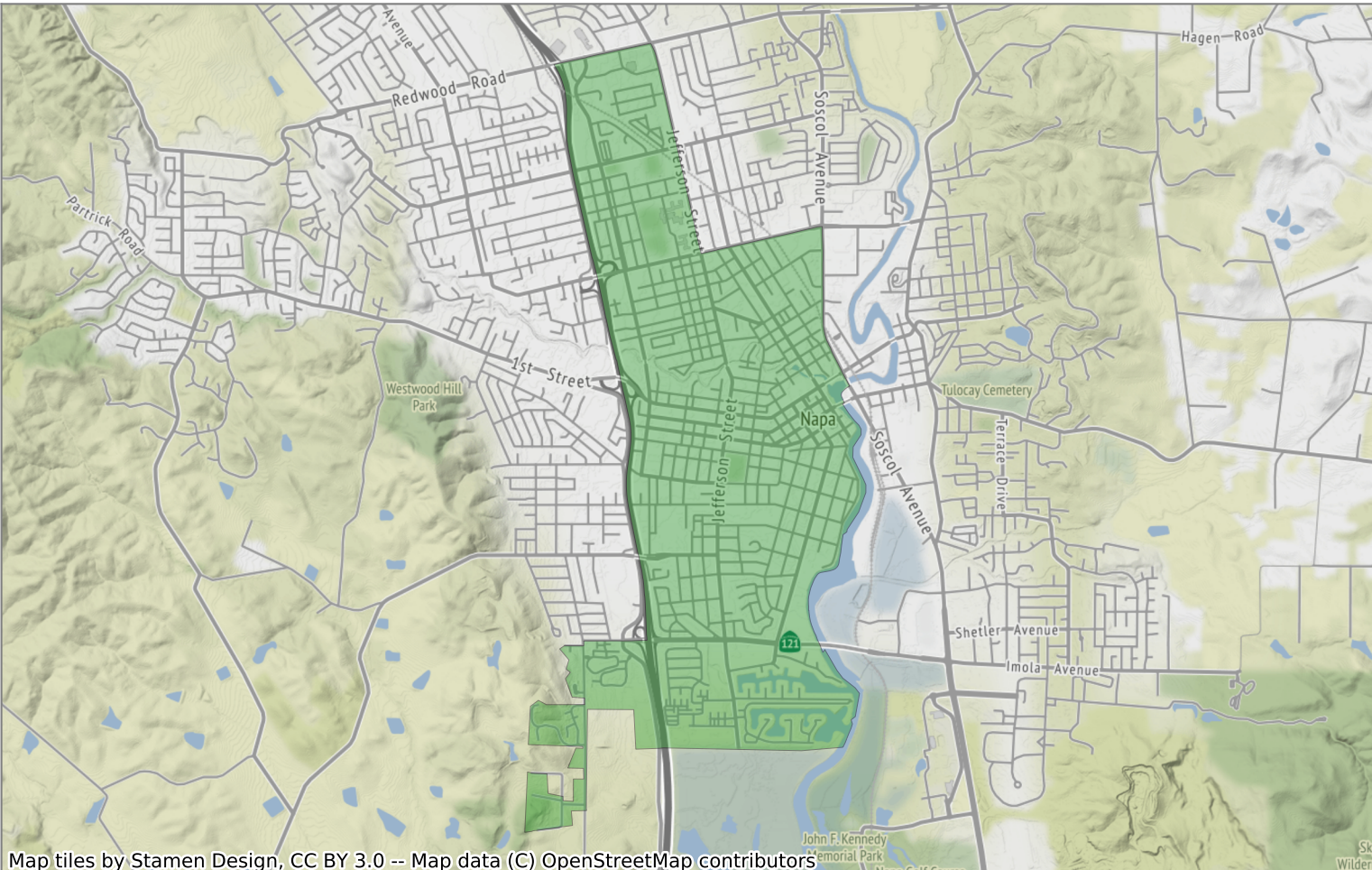
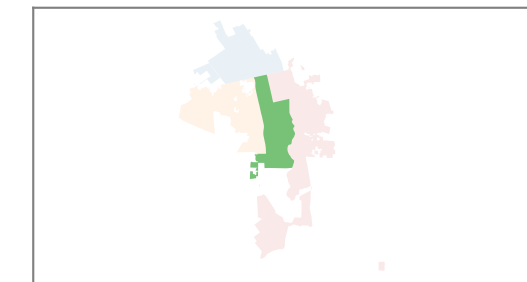
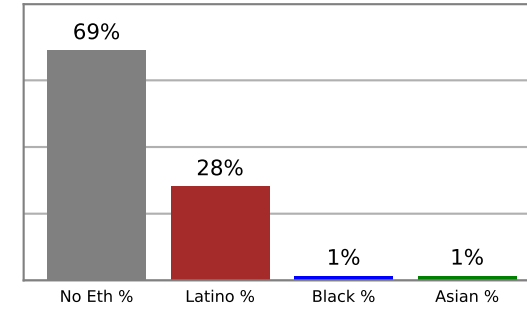
## Plan A

### District C

### 2010 Census



### Citizen Voting Age Population



Map tiles by Stamen Design, CC BY 3.0 -- Map data (C) OpenStreetMap contributors

Population	Deviation	Deviation %	No Eth	No Eth %	Latino	Latino %	Asian	Asian %	Black	Black %
19,282	57	0.3%	10,324	53.5%	8,462	43.9%	367	1.9%	129	0.7%
Total US 18+	No Eth CVAP	No Eth CVAP %	Latino CVAP	Latino CVAP %	Asian CVAP	Asian CVAP %	Black CVAP	Black CVAP %		
12,053	8,320	69.0%	3,399	28.2%	169	1.4%	165	1.4%		

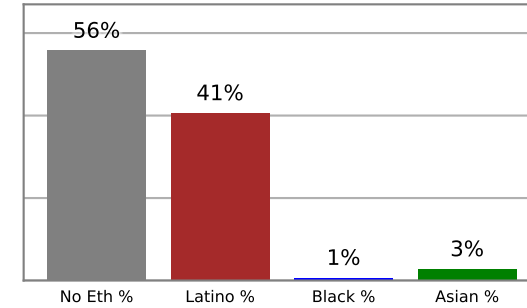


# City of Napa

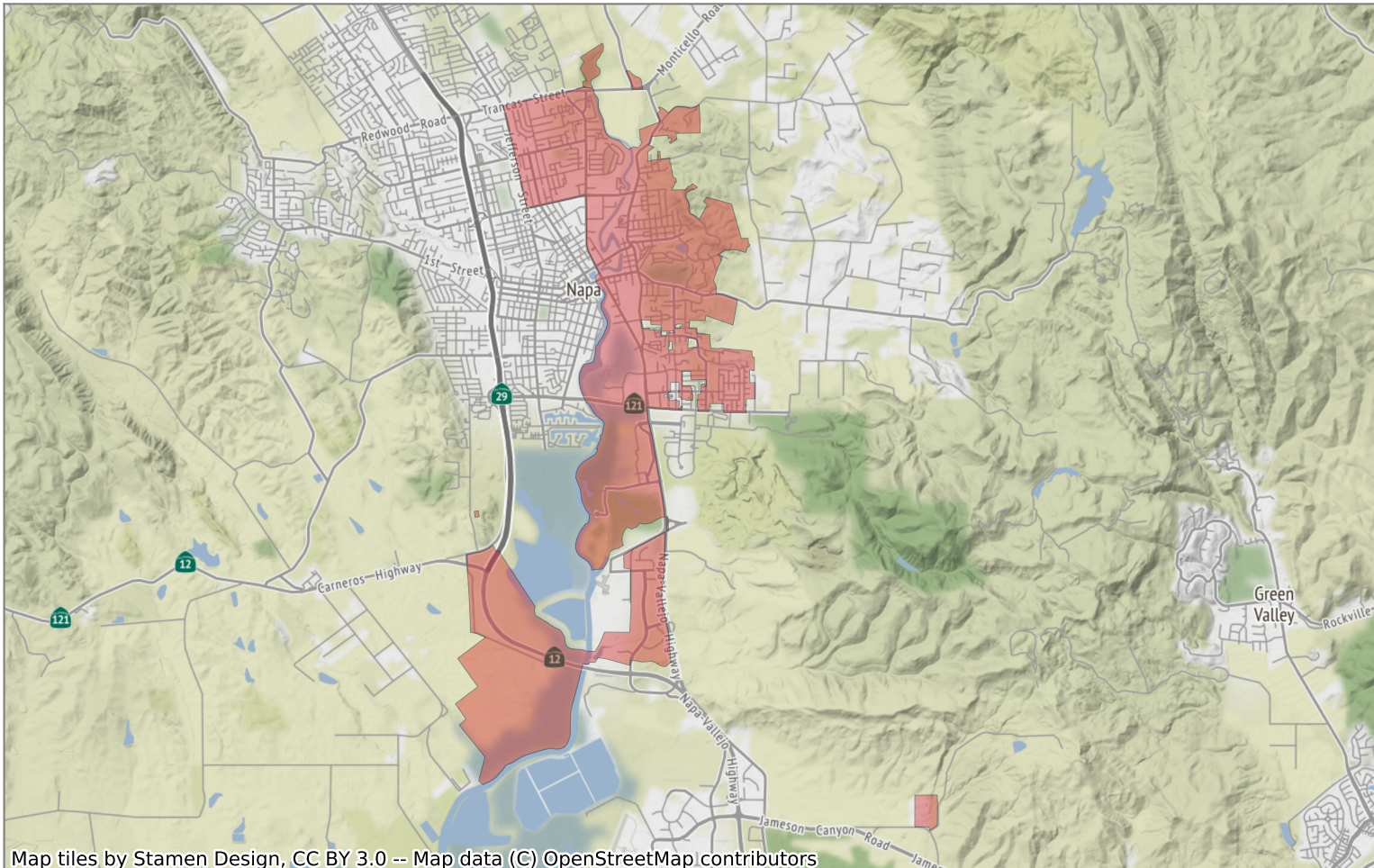
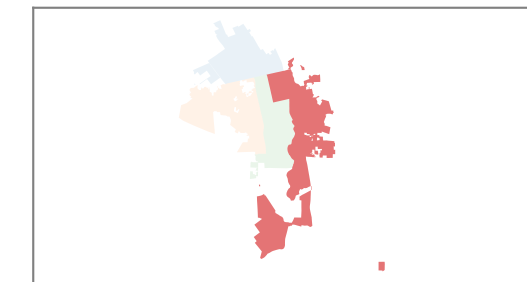
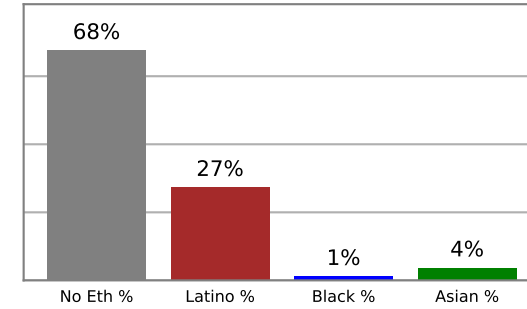
## Plan A

### District D

### 2010 Census



### Citizen Voting Age Population



Map tiles by Stamen Design, CC BY 3.0 -- Map data (C) OpenStreetMap contributors

Population	Deviation	Deviation %	No Eth	No Eth %	Latino	Latino %	Asian	Asian %	Black	Black %
18,911	-314	-1.6%	10,553	55.8%	7,687	40.6%	535	2.8%	136	0.7%
Total US 18+	No Eth CVAP	No Eth CVAP %	Latino CVAP	Latino CVAP %	Asian CVAP	Asian CVAP %	Black CVAP	Black CVAP %		
12,963	8,768	67.6%	3,550	27.4%	486	3.7%	159	1.2%		