

**SUPPLEMENTAL REPORTS & COMMUNICATIONS I**  
**Office of the City Clerk**

**City Council of the City of Napa**  
**Special Meeting**

**December 14, 2021**  
**FOR THE CITY COUNCIL OF THE CITY OF NAPA:**

**EVENING SESSION:**

**3. PUBLIC HEARINGS/APPEALS:**

**3.A. 2021-2022 Redistricting Process – 2nd Public Hearing with Proposed District Boundary Map**

- PowerPoint Presentation by City Staff and Redistricting Partners.
- DistrictR Map submissions submitted by the Napa County Progressive Alliance on December 12, 2021. Maps are also available to view online at [https://districtr.org/event/City of Napa](https://districtr.org/event/City_of_Napa).
- Email from Kevin Teague received on December 13, 2021.
- Email from Amy Martenson, Chair, Napa County Progressive Alliance received on December 13, 2021.

City Council Special Meeting  
12/14/2021  
Supplemental I - 3.A.  
From: City Staff & Redistricting Partners



# **2021-2022 REDISTRICTING PROCESS**

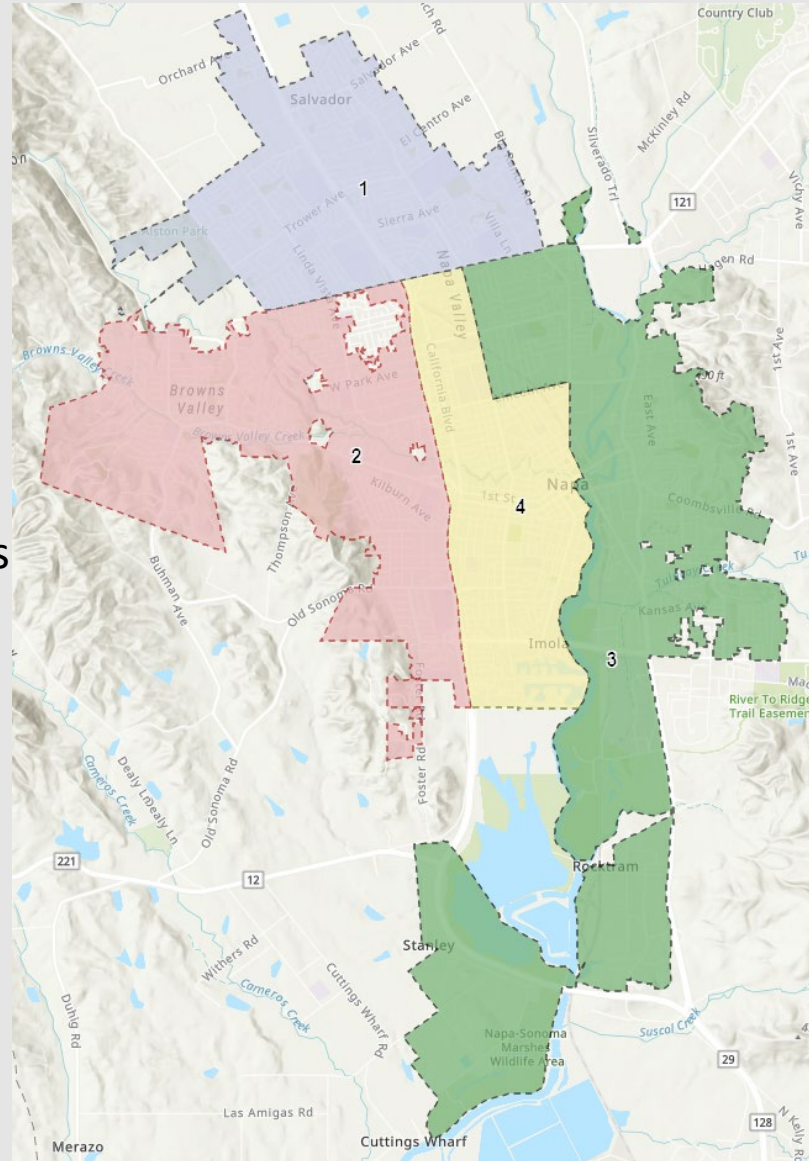
**2<sup>nd</sup> Public Hearing With  
District Boundary Map**

**December 14, 2021**



# Redistricting Process for Councilmember District Boundaries in the City of Napa

- Councilmember District Boundaries for November 2020 Election
  - (Based on 2010 Census)
- Redistricting Process for November 2022 Election
  - (Based on 2020 Census)



# City of Napa Redistricting 2021-2022





# Agenda

## Things we will cover

This presentation will cover some basics for those first engaging in the process and go into a potential map for the City of Napa.

- Redistricting Criteria
- From COI to draft Maps
- City population / Demographics
- Draft Map A
- Next Steps

# Redistricting Criteria

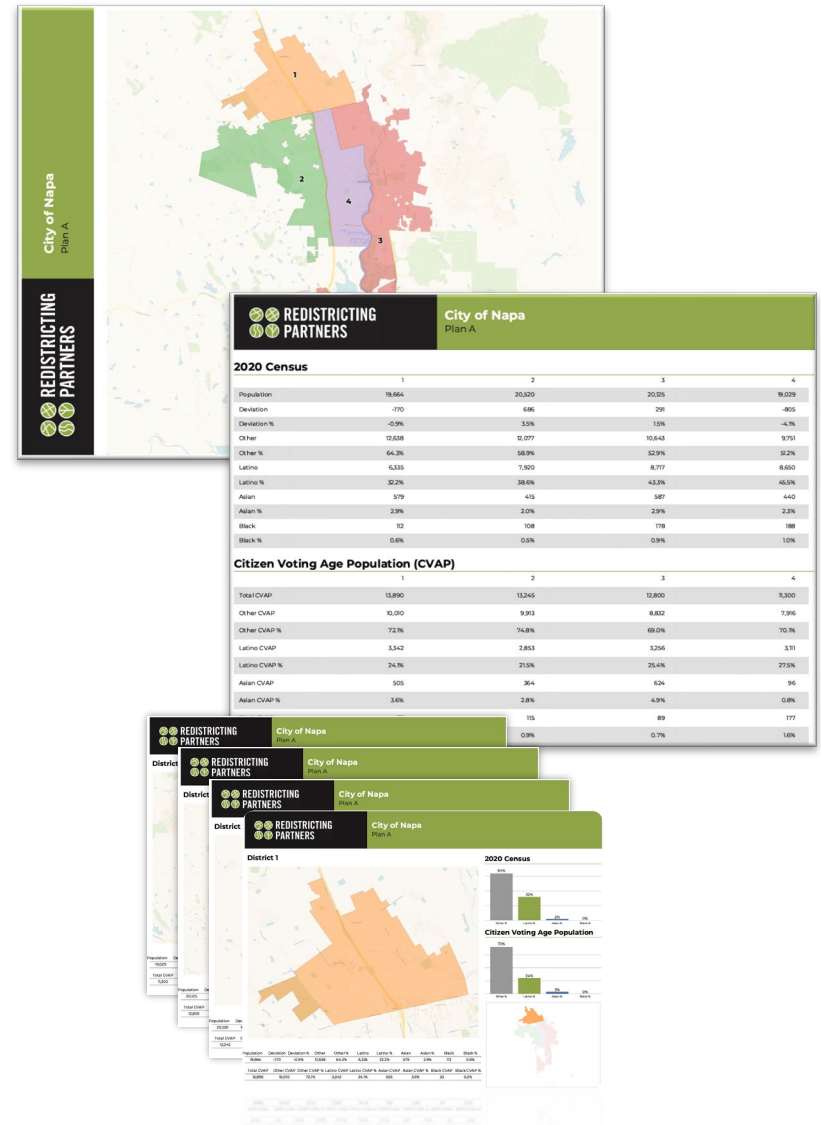
FAIR MAPS Act (California Elections Code Section 21621)

- Substantially equal size - people, not citizens
- Contiguous – districts should not hop/jump
- Maintain “*communities of interest*”
- Follow easily identifiable lines
- Keep districts compact – appearance/function

# From COI to Maps

With more cities and counties using community based redistricting, we move redistricting out into the public, with maps driven by Community of Interest testimony.

- **Input from community drives process** with multiple ways for the public to engage.
- **Rules for process** emphasize the importance of traditional criteria and minimizing divisions of neighborhoods.
- **Releasing maps for feedback** – today we will see plans to spark more public engagement.



# Community of Interest Forms

## Submitting Your COI Form

- Input can be provided in public hearings or using the “Community of Interest Worksheet.”



### Community of Interest (COI) Worksheet

#### How to Document Your Community of Interest (COI)

- 1) What is the nature of the common social or economic interest of your community? You can describe what the common interests of your community are and why or how they are important.
- 2) Where is your community located? You can define it by neighborhood, streets, address, proximity to a key landmark (such as a school or community center), or other boundaries.
- 3) What are the geographic definers/boundaries of your neighborhood? Examples of definers/boundaries could be highways, roads, rivers, hills, or parks.



### Hoja de Trabajo de la Comunidad de Interés (COI)

#### Cómo Documentar Su Comunidad de Interés (COI)

- 1) ¿Cuál es la naturaleza del interés social o económico común de su comunidad? Puede describir cuáles son los intereses comunes de su comunidad y por qué o cómo son importantes.
- 2) ¿Dónde está ubicada su comunidad? Puede definirlo por vecindario, calles, dirección, proximidad a un punto de referencia clave (como una escuela o un centro comunitario) u otros límites.
- 3) ¿Cuáles son los delimitadores / límites geográficos de su vecindario? Ejemplos de definidores / límites pueden ser autopista, caminos, ríos, colinas o parques.

# Communities of Interest

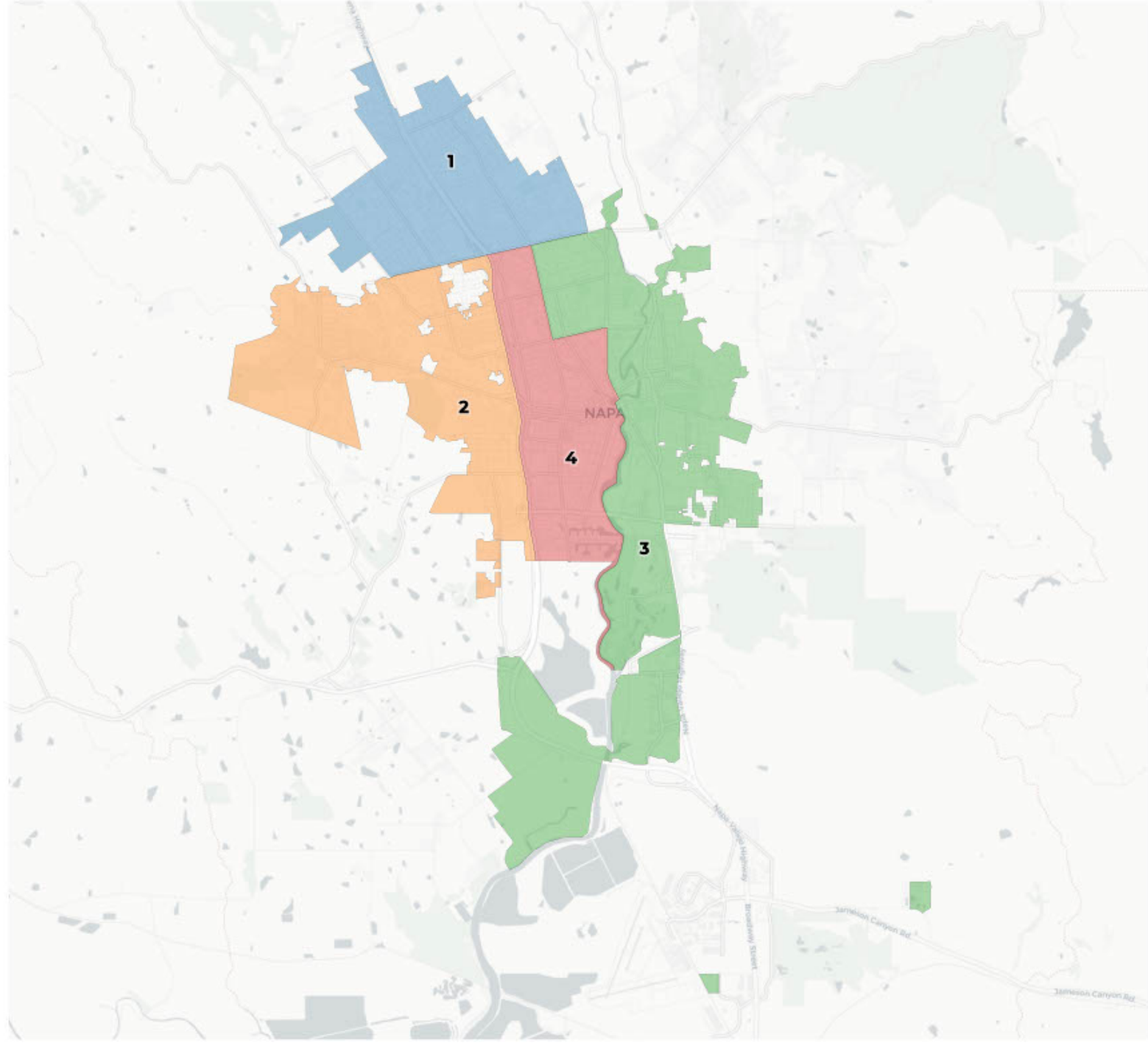
Drawing YOUR Communities of Interest

DistrictR is an online public mapping tool for the public to use to draw their own Communities of Interest and also submit district maps



***You draw the lines.***

[https://DistrictR.org/event/City of Napa](https://DistrictR.org/event/City_of_Napa)



## 2020 Census

	1	2	3	4
Population	19,664	20,521	20,125	19,029
Deviation	-171	686	290	-806
Deviation %	-0.9%	3.5%	1.5%	-4.1%
Other	12,638	12,077	10,643	9,751
Other %	64.3%	58.9%	52.9%	51.2%
Latino	6,335	7,921	8,717	8,650
Latino %	32.2%	38.6%	43.3%	45.5%
Asian	579	415	587	440
Asian %	2.9%	2.0%	2.9%	2.3%
Black	112	108	178	188
Black %	0.6%	0.5%	0.9%	1.0%

## Citizen Voting Age Population (CVAP)

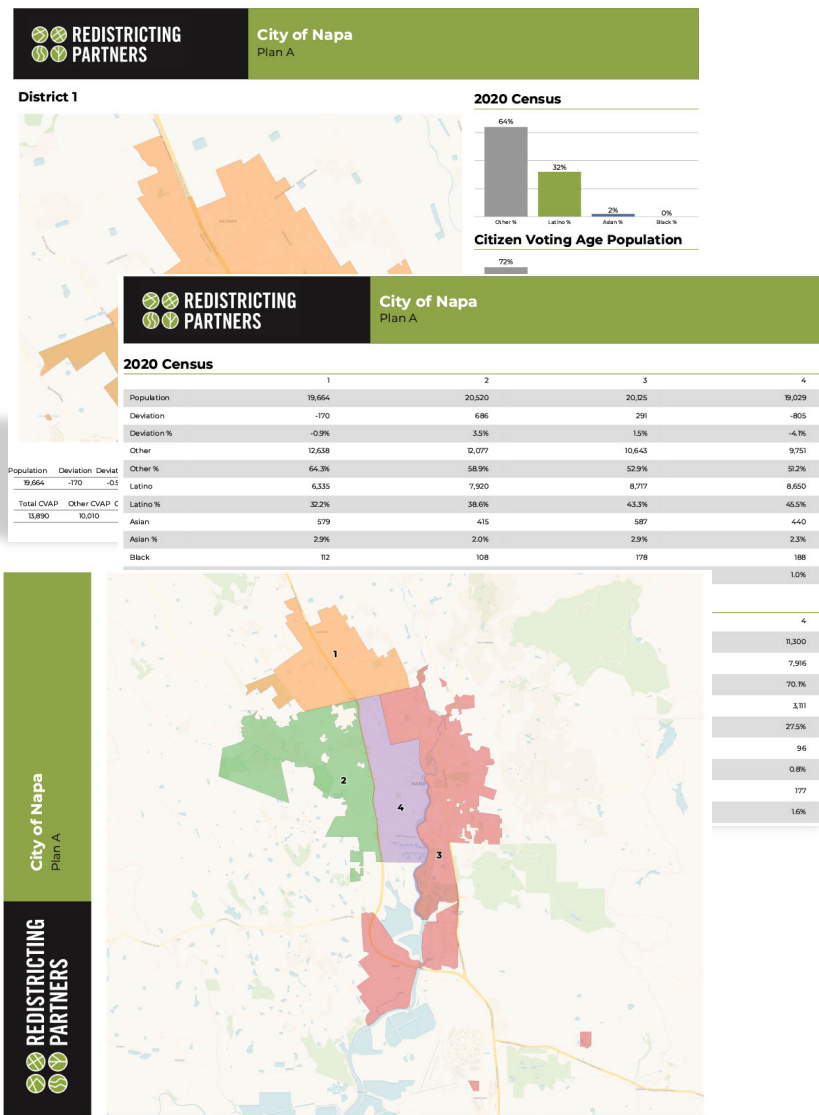
	1	2	3	4
Total CVAP	13,890	13,245	12,800	11,300
Other CVAP	10,010	9,913	8,832	7,916
Other CVAP %	72.1%	74.8%	69.0%	70.1%
Latino CVAP	3,342	2,853	3,256	3,111
Latino CVAP %	24.1%	21.5%	25.4%	27.5%
Asian CVAP	505	364	624	96
Asian CVAP %	3.6%	2.8%	4.9%	0.8%
Black CVAP	33	115	89	177
Black CVAP %	0.2%	0.9%	0.7%	1.6%

# Map to Review

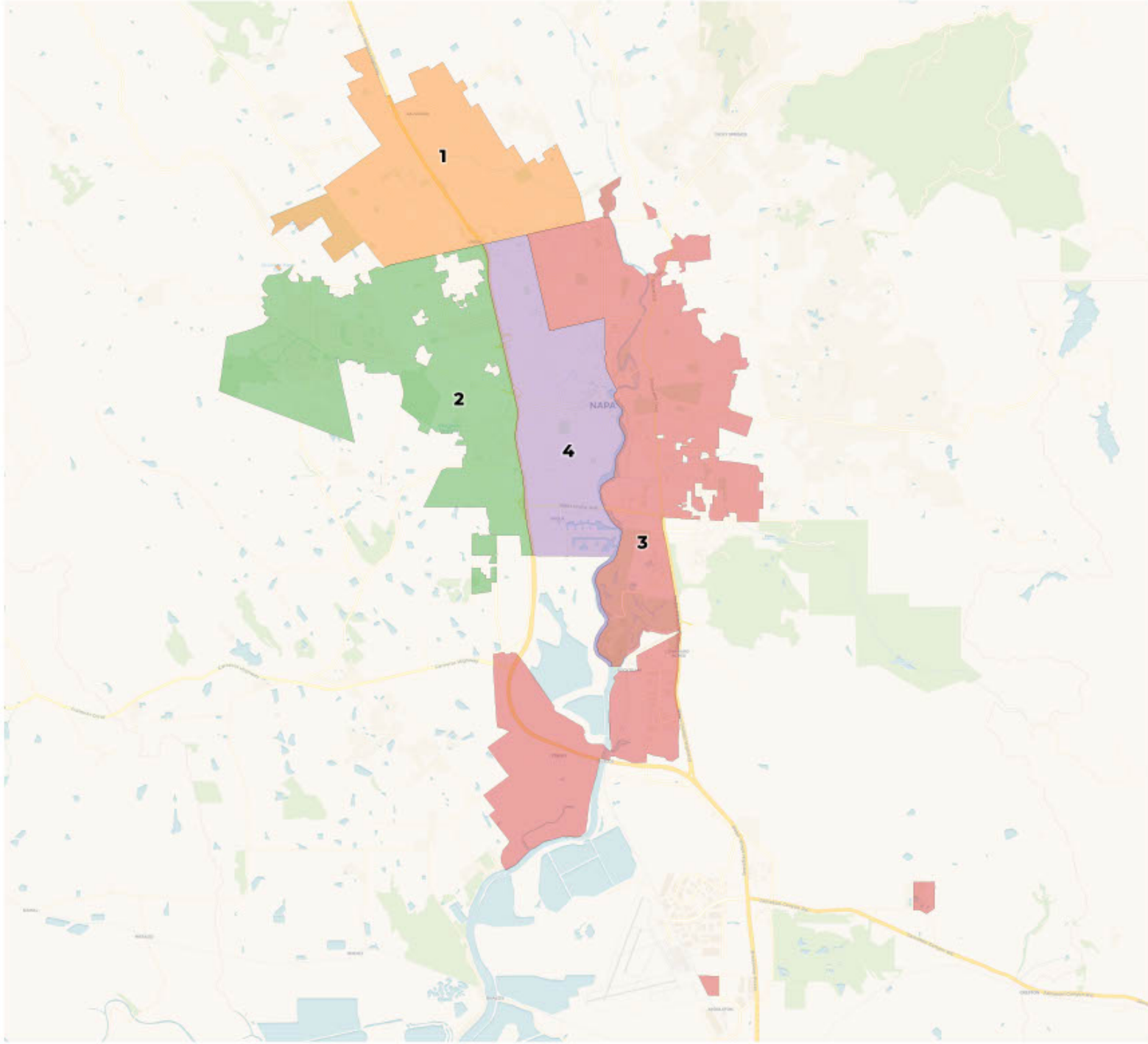
There is one plan to review today.

- **Plan A** – existing lines

This plan has an overview, data table, individual district pages and web map that has been provided to the City and is available on the City's redistricting website.







## 2020 Census

	1	2	3	4
Population	19,664	20,520	20,125	19,029
Deviation	-170	686	291	-805
Deviation %	-0.9%	3.5%	1.5%	-4.1%
Other	12,638	12,077	10,643	9,751
Other %	64.3%	58.9%	52.9%	51.2%
Latino	6,335	7,920	8,717	8,650
Latino %	32.2%	38.6%	43.3%	45.5%
Asian	579	415	587	440
Asian %	2.9%	2.0%	2.9%	2.3%
Black	112	108	178	188
Black %	0.6%	0.5%	0.9%	1.0%

## Citizen Voting Age Population (CVAP)

	1	2	3	4
Total CVAP	13,890	13,245	12,800	11,300
Other CVAP	10,010	9,913	8,832	7,916
Other CVAP %	72.1%	74.8%	69.0%	70.1%
Latino CVAP	3,342	2,853	3,256	3,111
Latino CVAP %	24.1%	21.5%	25.4%	27.5%
Asian CVAP	505	364	624	96
Asian CVAP %	3.6%	2.8%	4.9%	0.8%
Black CVAP	33	115	89	177
Black CVAP %	0.2%	0.9%	0.7%	1.6%

## 2020 Census

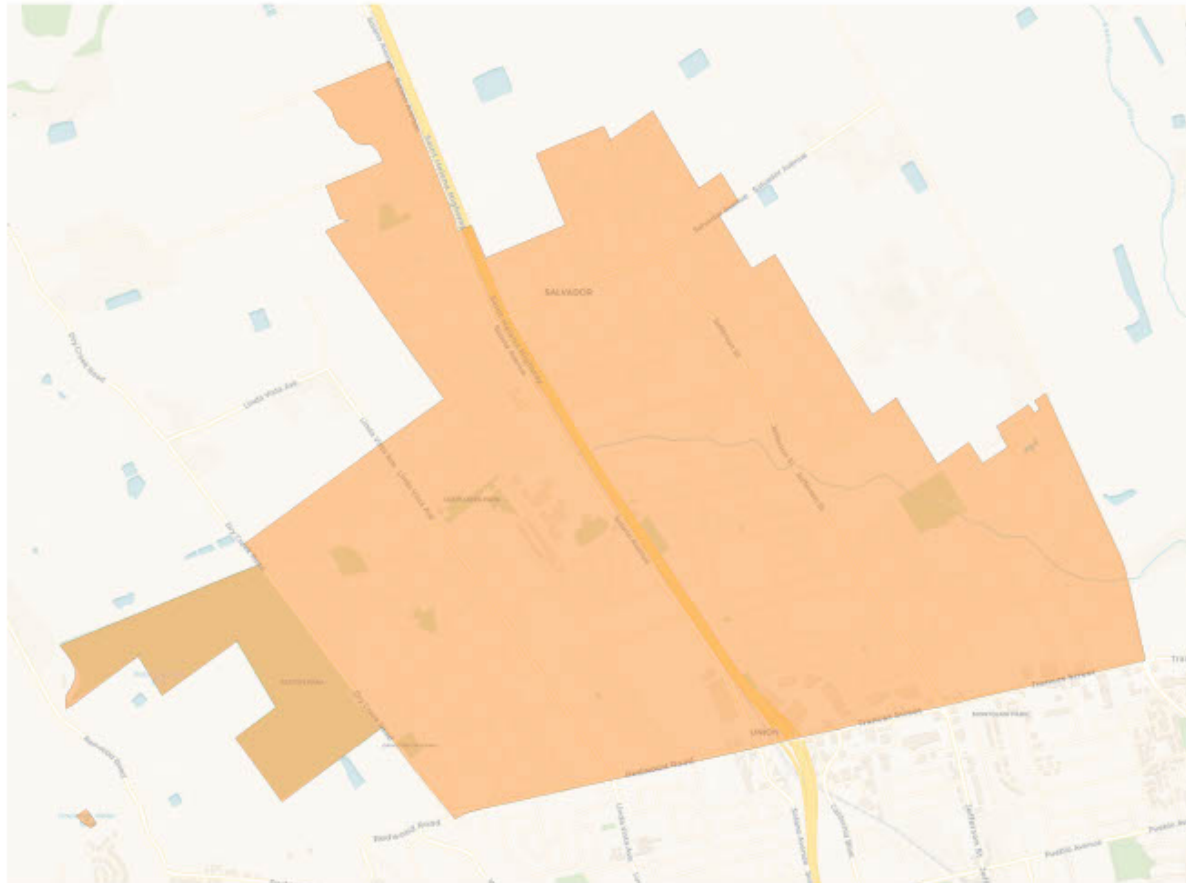
	1	2	3	4
Population	19,664	20,520	20,125	19,029
Deviation	-170	686	291	-805
Deviation %	-0.9%	3.5%	1.5%	-4.1%
Other	12,638	12,077	10,643	9,751
Other %	64.3%	58.9%	52.9%	51.2%
Latino	6,335	7,828	8,737	8,650
Latino %	32.2%	38.1%	43.4%	45.5%
Asian	1,000	1,000	1,000	440
Asian %	2.9%	2.0%	2.9%	2.3%
Black	112	108	178	188
Black %	0.6%	0.5%	0.9%	1.0%

Deviation is 7.6%

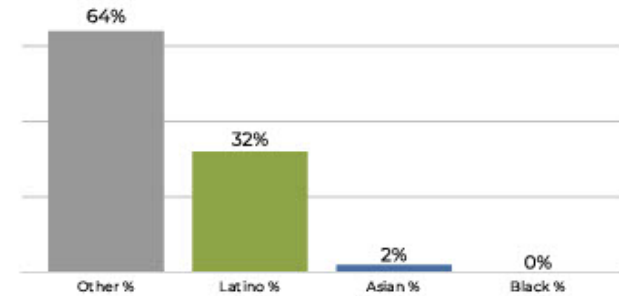
## Citizen Voting Age Population (CVAP)

	1	2	3	4
Total CVAP	13,890	13,245	12,800	11,300
Other CVAP	10,010	9,913	8,832	7,916
Other CVAP %	72.1%	74.8%	69.0%	70.1%
Latino CVAP	3,342	2,853	3,256	3,111
Latino CVAP %	24.1%	21.5%	25.4%	27.5%
Asian CVAP	505	364	624	96
Asian CVAP %	3.6%	2.8%	4.9%	0.8%
Black CVAP	33	115	89	177
Black CVAP %	0.2%	0.9%	0.7%	1.6%

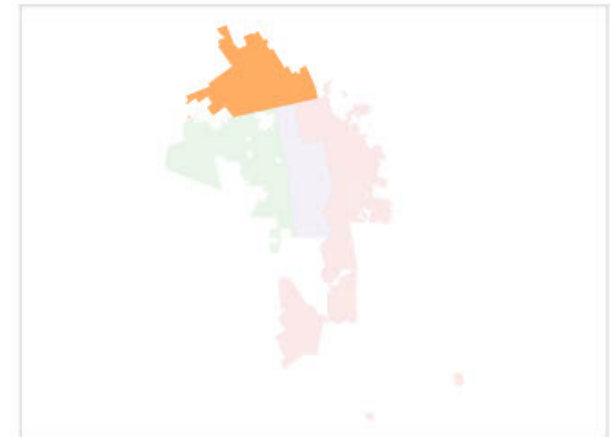
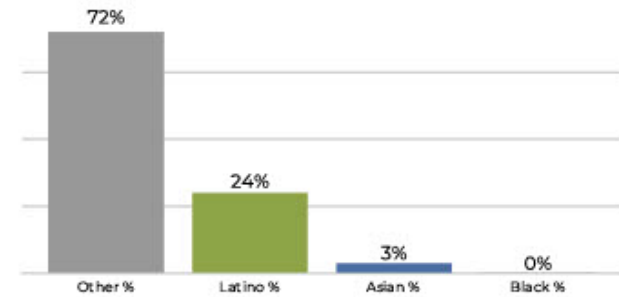
## District 1



## 2020 Census

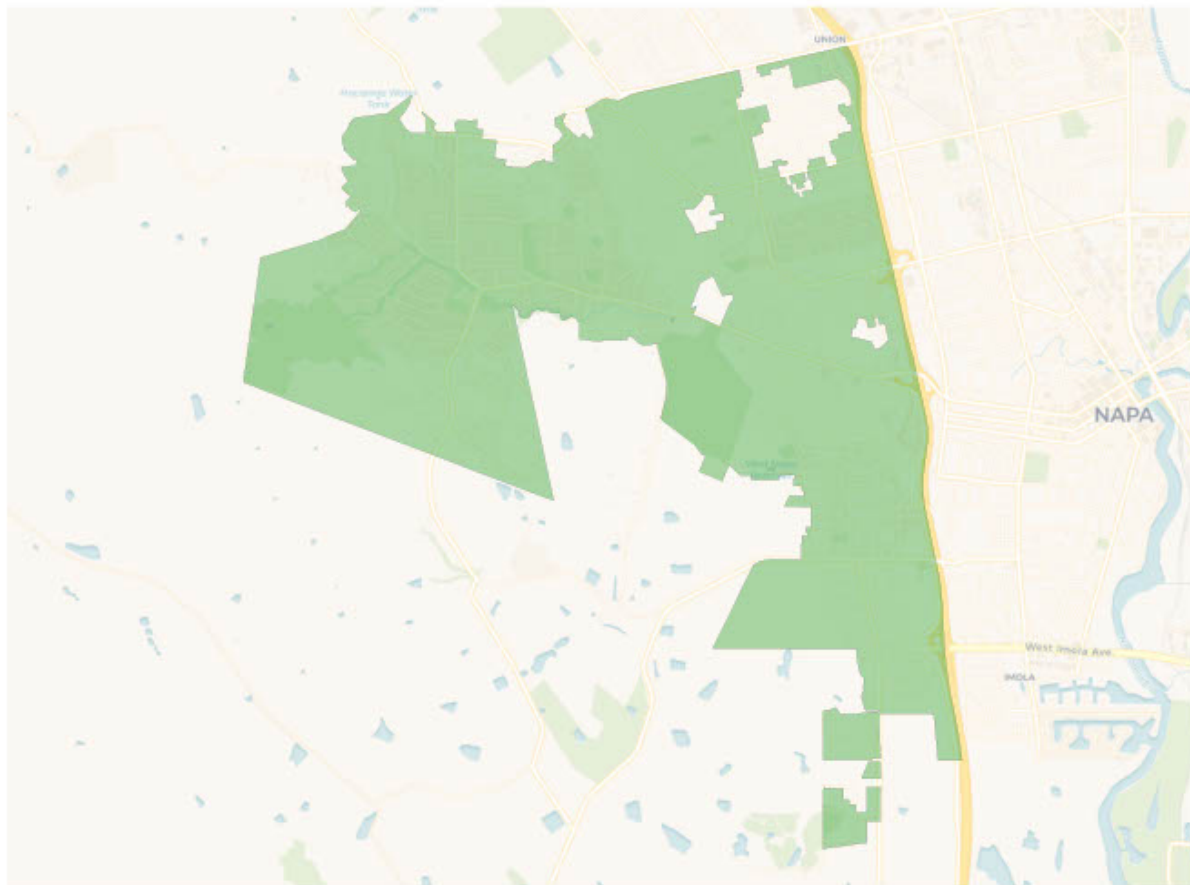


## Citizen Voting Age Population

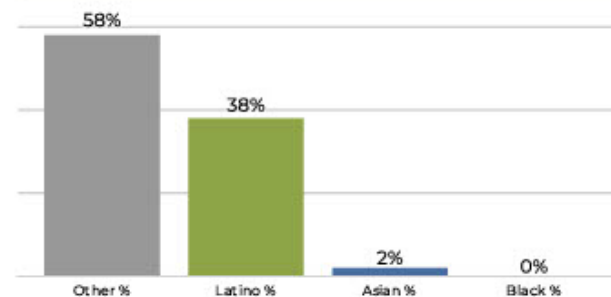


Population	Deviation	Deviation %	Other	Other %	Latino	Latino %	Asian	Asian %	Black	Black %
19,664	-170	-0.9%	12,638	64.3%	6,335	32.2%	579	2.9%	112	0.6%
Total CVAP	Other CVAP	Other CVAP %	Latino CVAP	Latino CVAP %	Asian CVAP	Asian CVAP %	Black CVAP	Black CVAP %		
13,890	10,010	72.1%	3,342	24.1%	505	3.6%	33	0.2%		

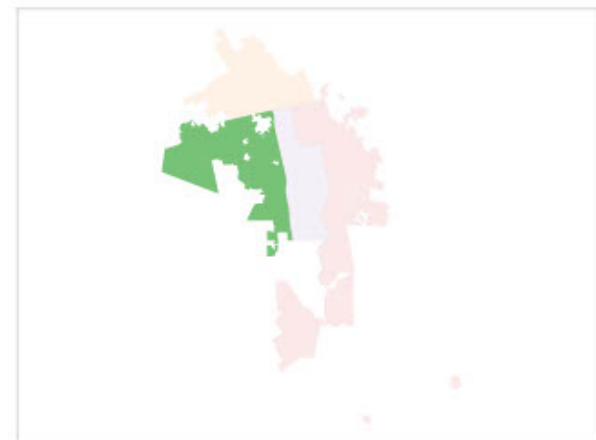
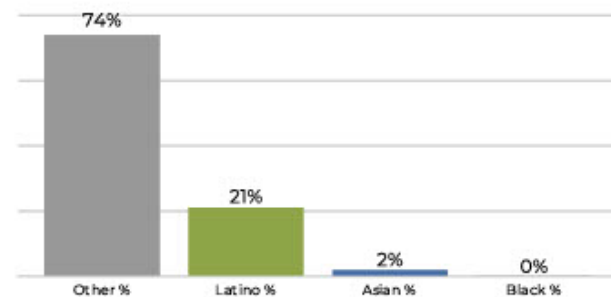
## District 2



## 2020 Census



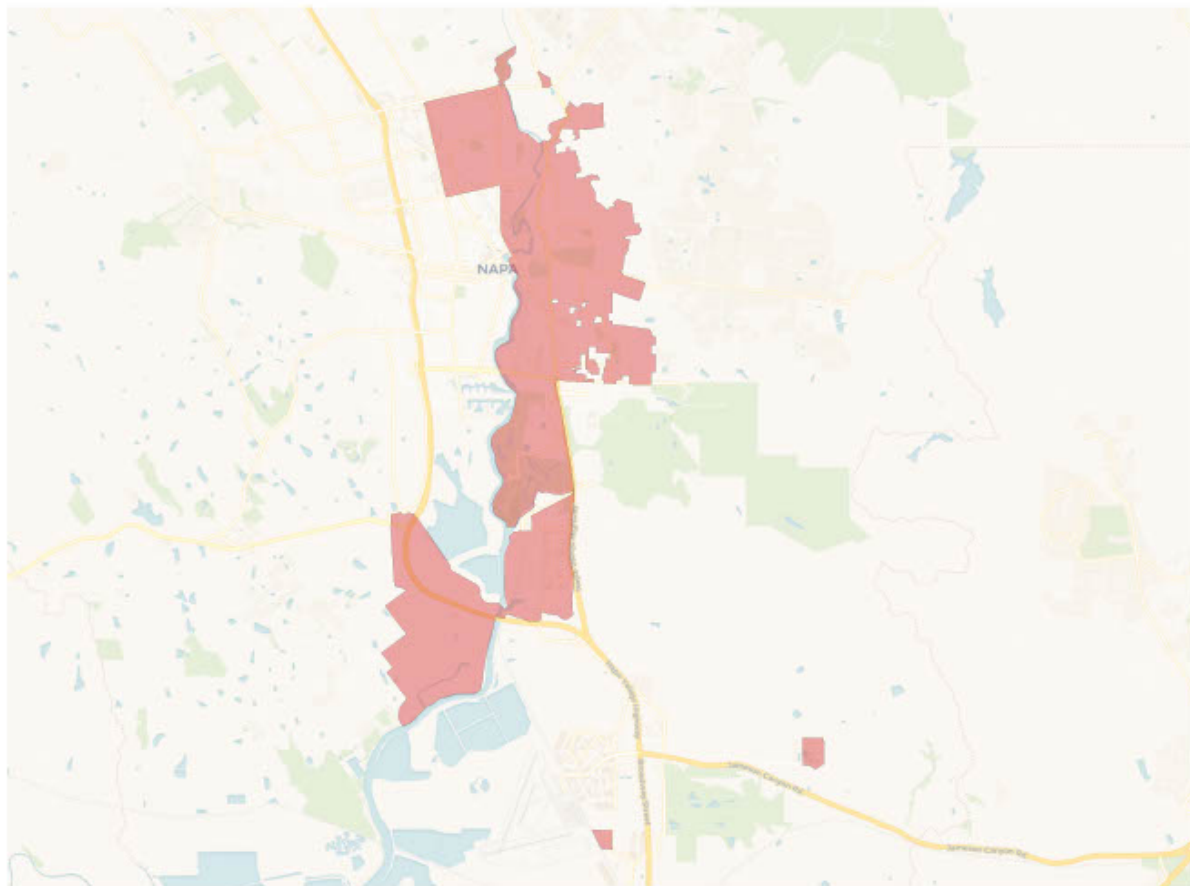
## Citizen Voting Age Population



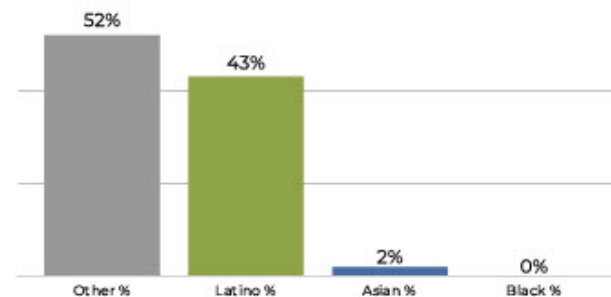
Population	Deviation	Deviation %	Other	Other %	Latino	Latino %	Asian	Asian %	Black	Black %
20,520	686	3.5%	12,077	58.9%	7,920	38.6%	415	2.0%	108	0.5%
Total CVAP	Other CVAP	Other CVAP %	Latino CVAP	Latino CVAP %	Asian CVAP	Asian CVAP %	Black CVAP	Black CVAP %		
13,245	9,913	74.8%	2,853	21.5%	364	2.8%	115	0.9%		



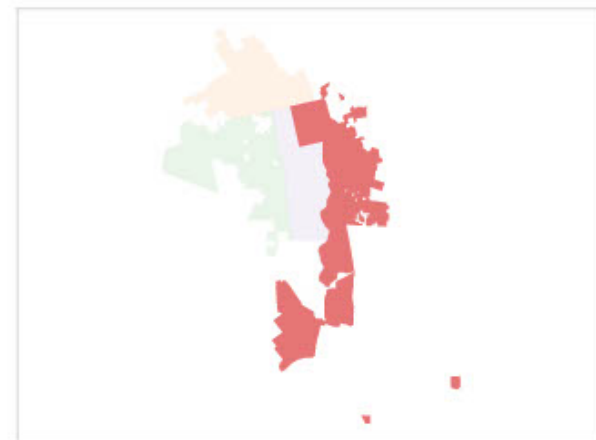
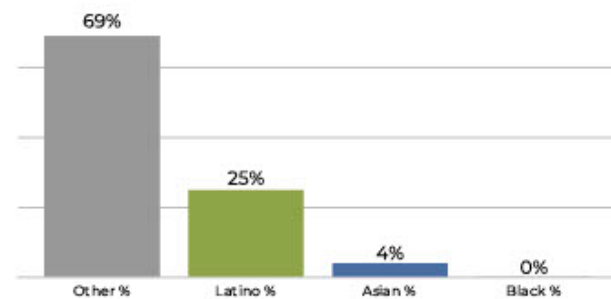
## District 3



## 2020 Census

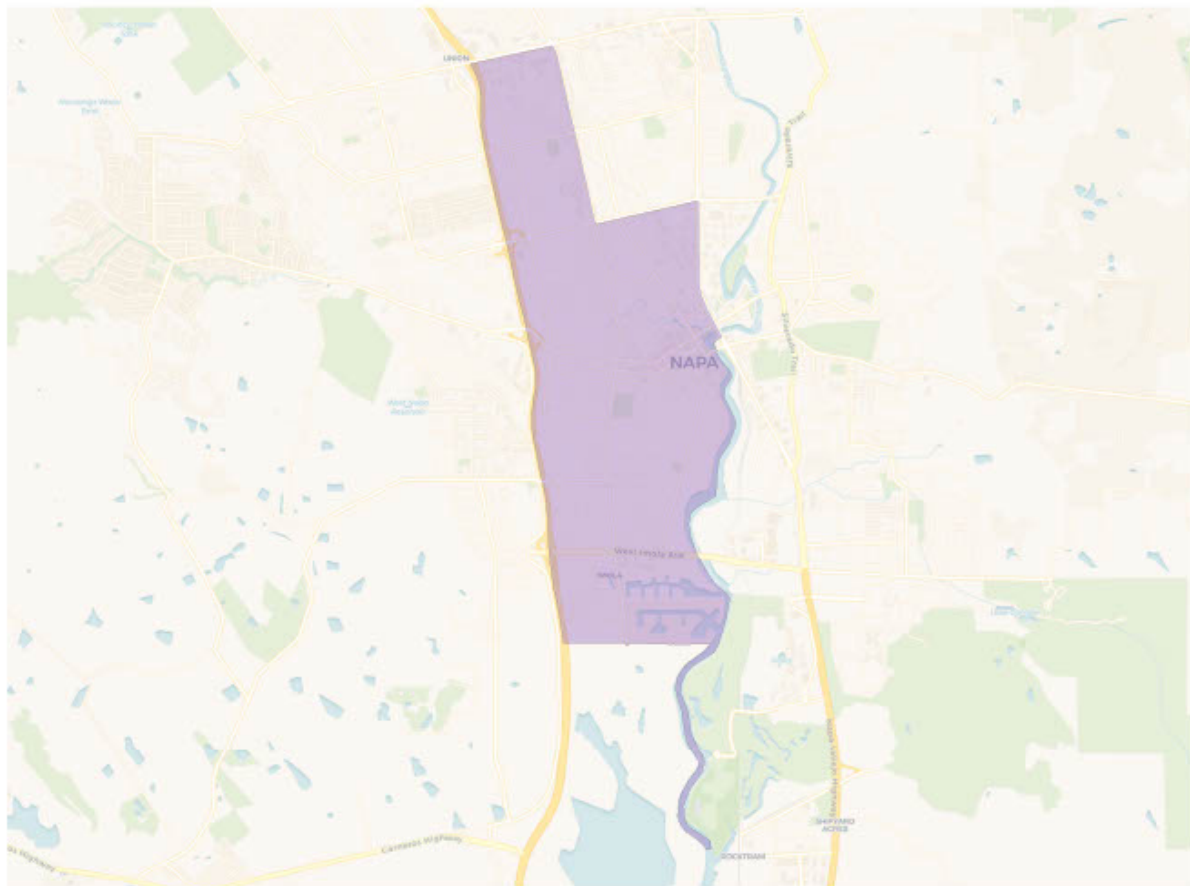


## Citizen Voting Age Population

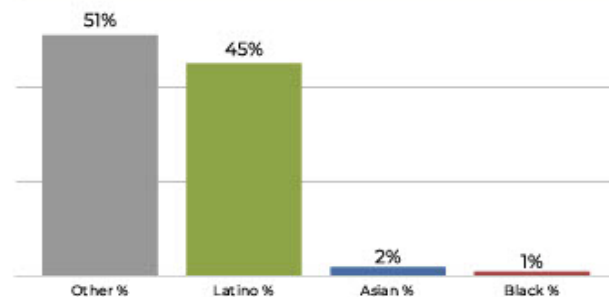


Population	Deviation	Deviation %	Other	Other %	Latino	Latino %	Asian	Asian %	Black	Black %
20,125	291	1.5%	10,643	52.9%	8,777	43.3%	587	2.9%	178	0.9%
Total CVAP	Other CVAP	Other CVAP %	Latino CVAP	Latino CVAP %	Asian CVAP	Asian CVAP %	Black CVAP	Black CVAP %		
12,800	8,832	69.0%	3,256	25.4%	624	4.9%	89	0.7%		

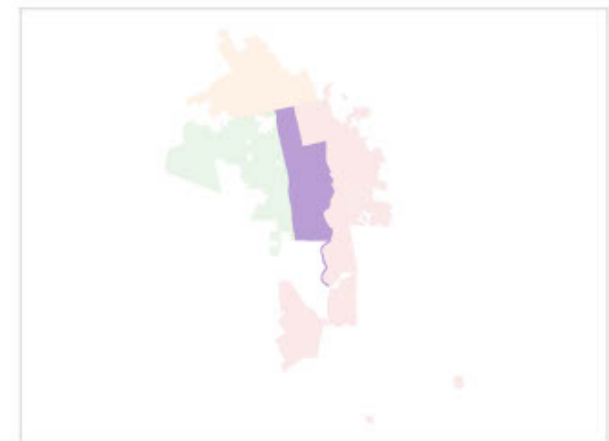
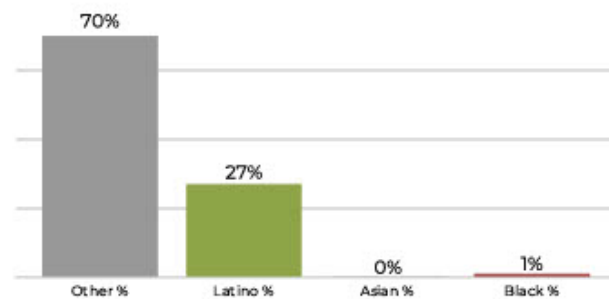
## District 4



## 2020 Census



## Citizen Voting Age Population



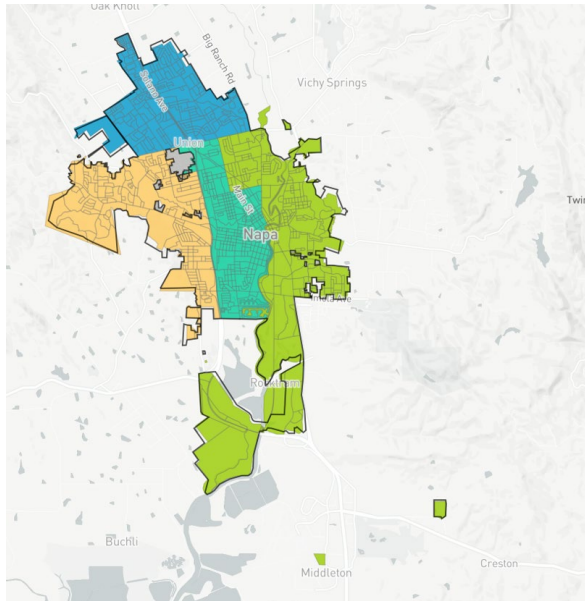
Population	Deviation	Deviation %	Other	Other %	Latino	Latino %	Asian	Asian %	Black	Black %
19,029	-805	-4.1%	9,751	51.2%	8,650	45.5%	440	2.3%	188	1.0%
Total CVAP	Other CVAP	Other CVAP %	Latino CVAP	Latino CVAP %	Asian CVAP	Asian CVAP %	Black CVAP	Black CVAP %		
11,300	7,916	70.1%	3,111	27.5%	96	0.8%	177	1.6%		

# DistrictR Maps

These maps were submitted on December 12, after the deadline for public notice for the public meeting.

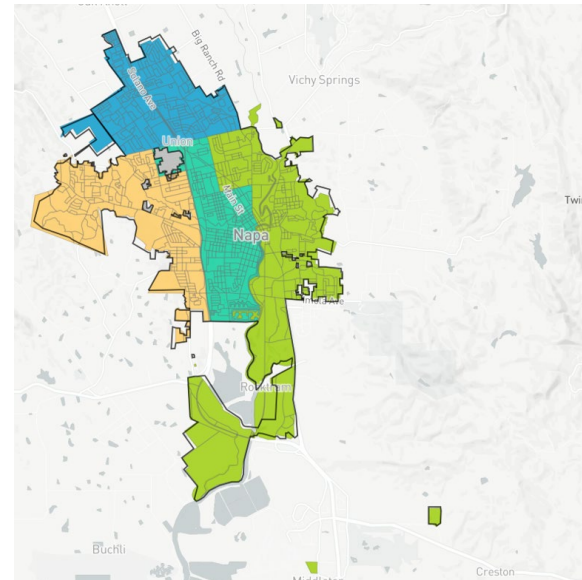
**Napa County Progressive Alliance: Make Shift of WP/LV Island to Central District Possible After Annexation**

ID: 92917



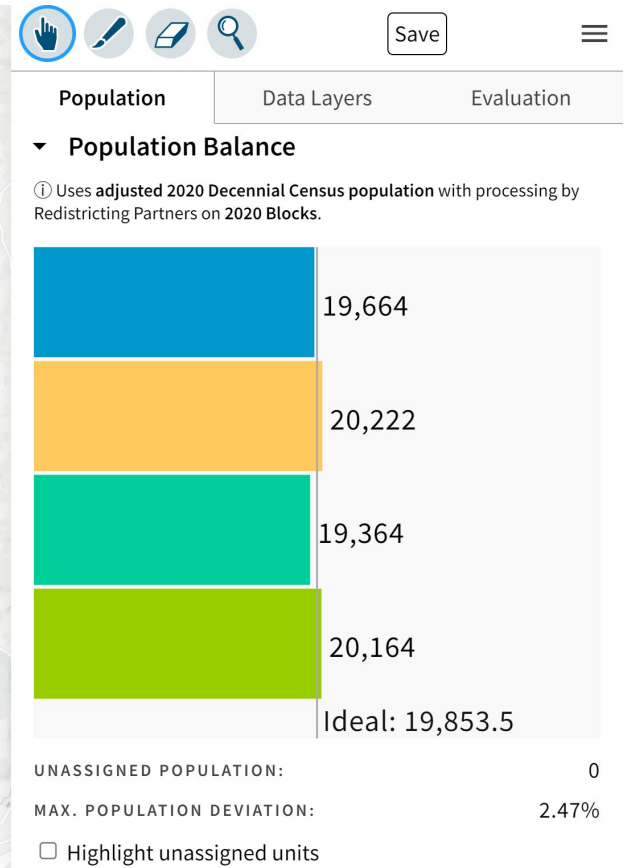
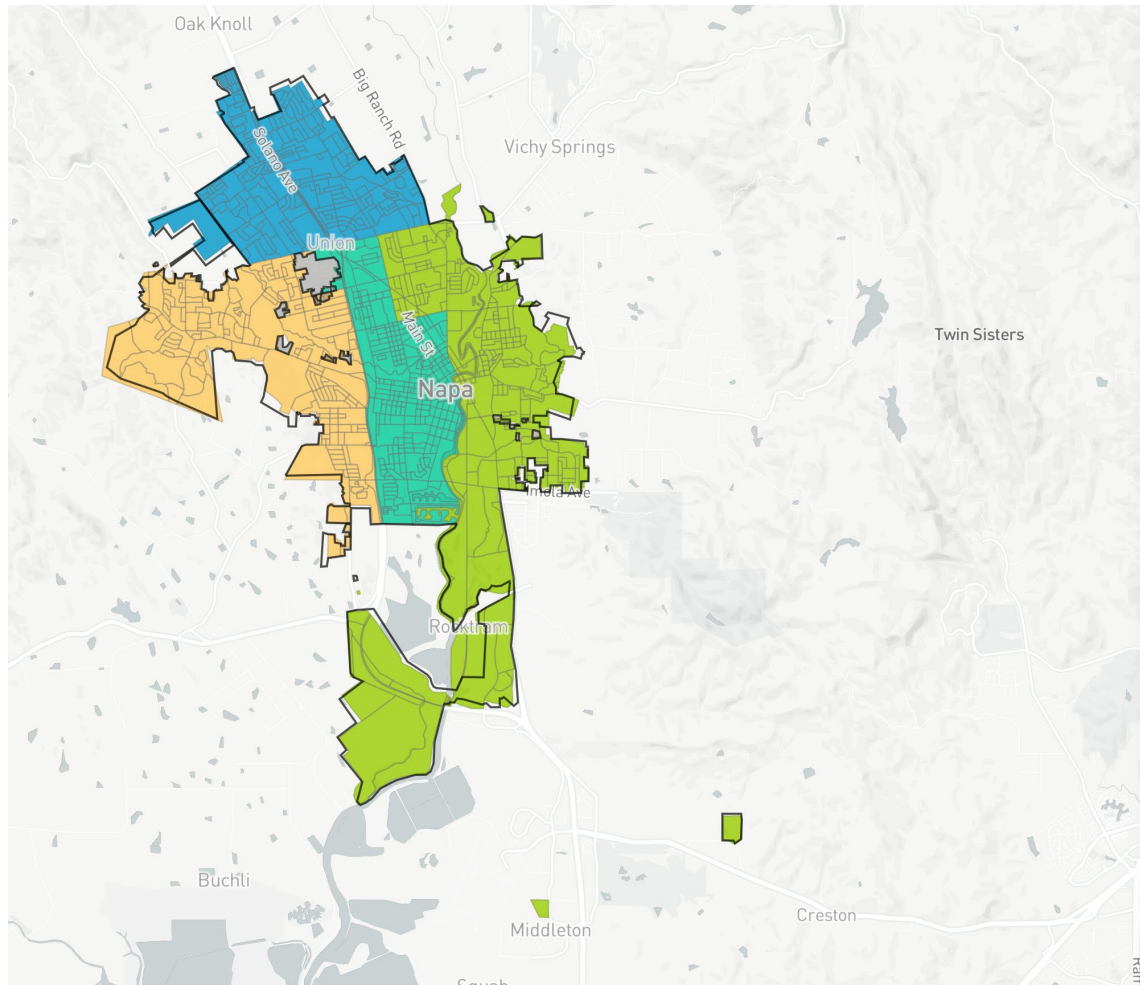
**Napa County Progressive Alliance: WP/LV Island with Central District**

ID: 92819

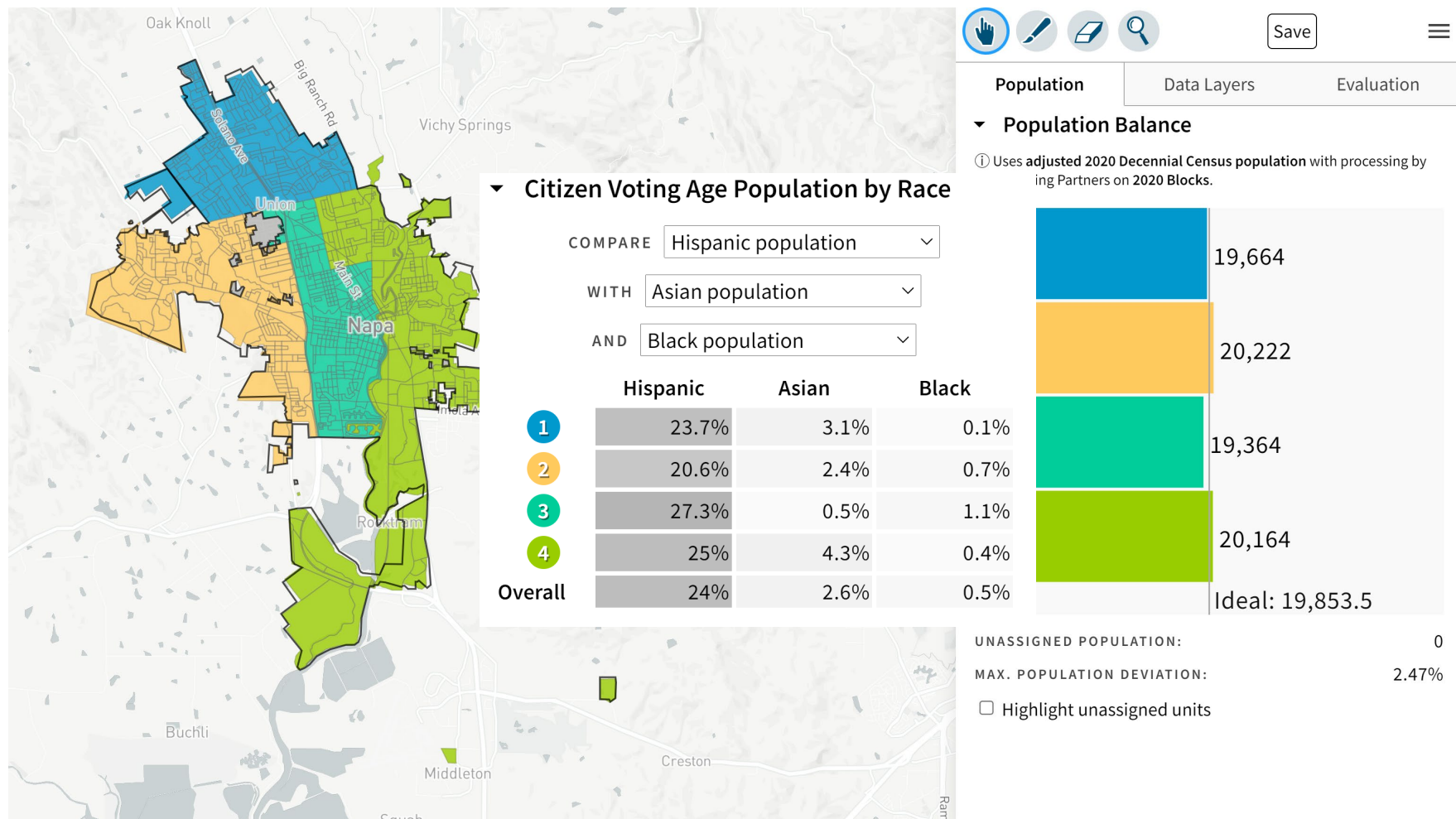




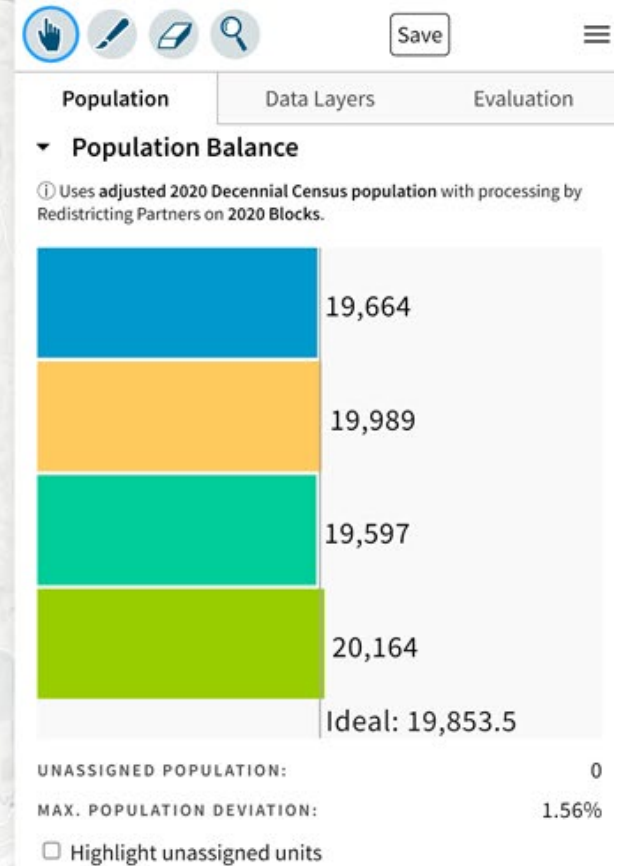
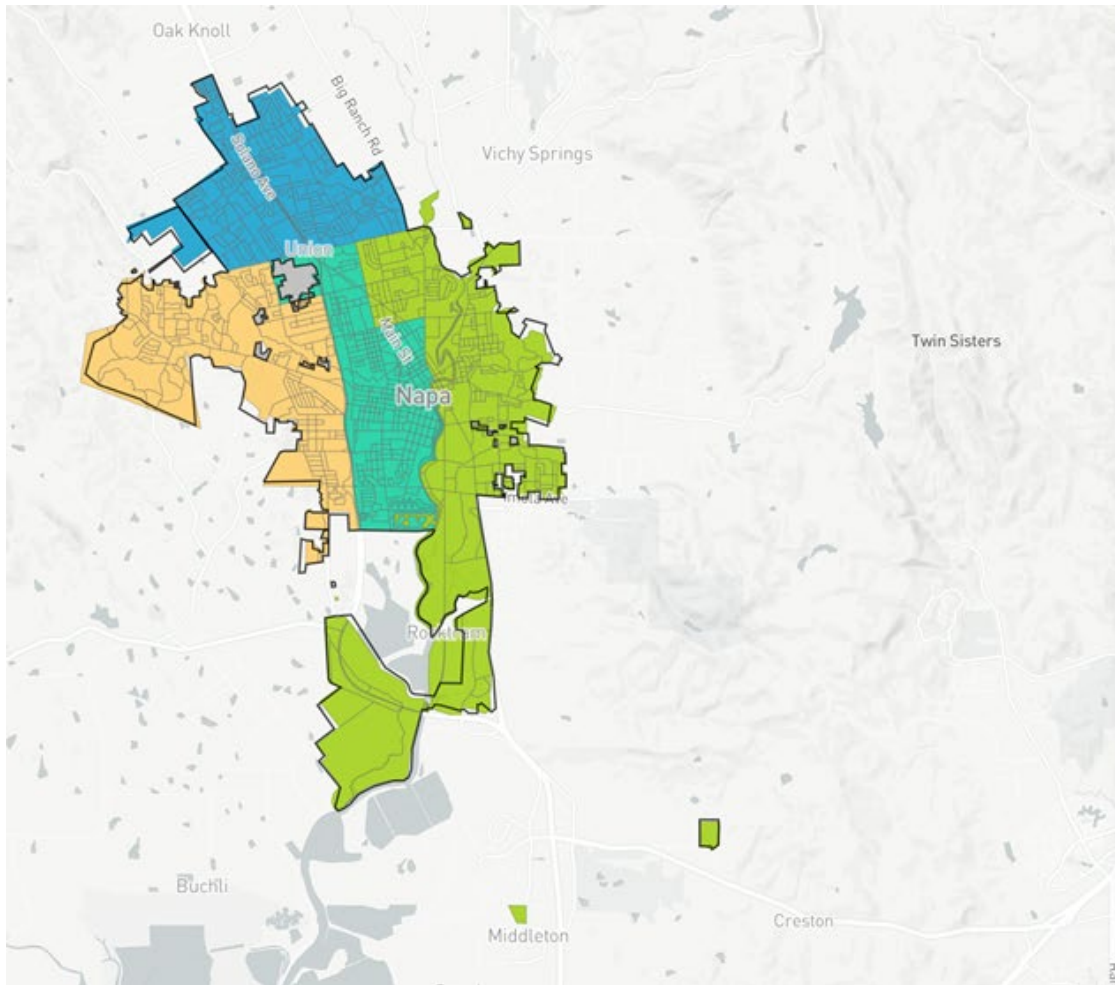
# Napa County Progressive Alliance: Make Shift of WP/LV Island to Central District Possible After Annexation



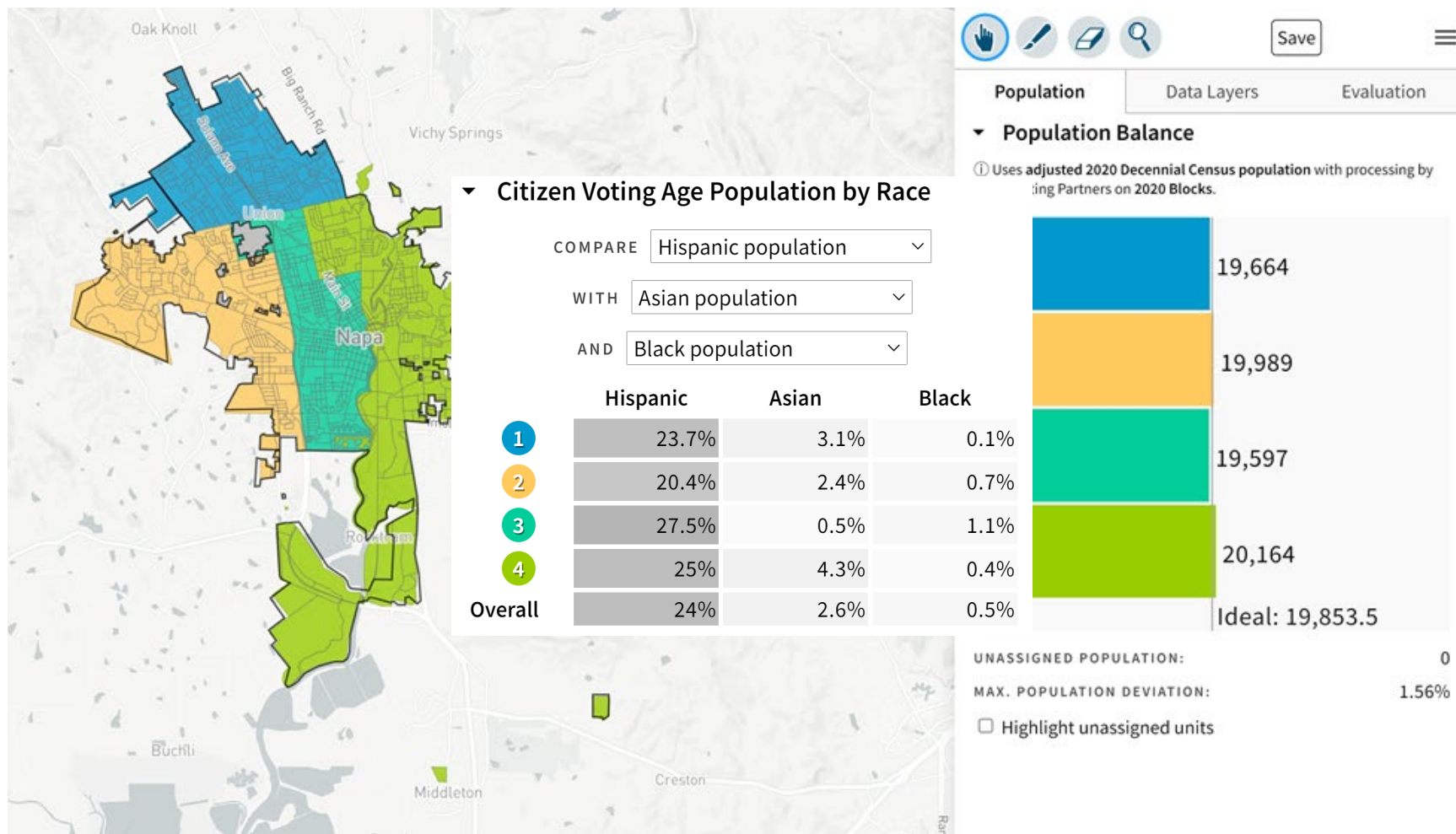
# Napa County Progressive Alliance: Make Shift of WP/LV Island to Central District Possible After Annexation



# Napa County Progressive Alliance: WP/LV Island with Central District



# Napa County Progressive Alliance: WP/LV Island with Central District

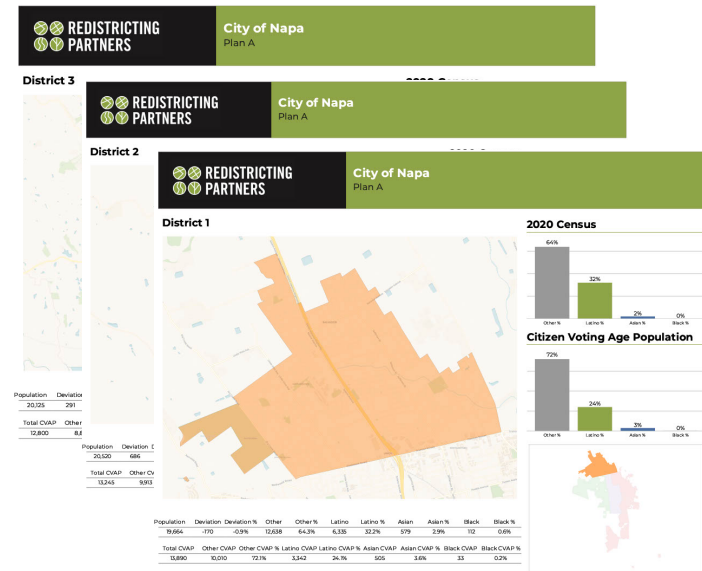
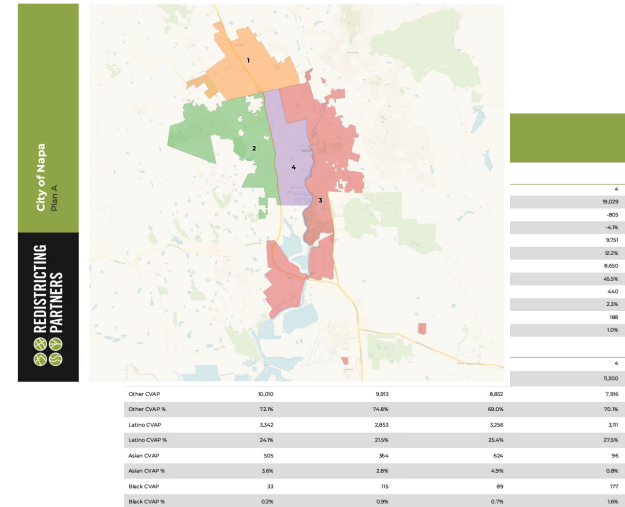




# What's Next

The City Council can make use of these mapping options in a number of ways.

- **Suggest possible changes** –adjustments can be made to any of the draft plans.
- **Provide direction** for the preparation of **new draft map(s)** to be put out for public input and future review and adoption.
- Many more opportunities for community outreach and public input
- Consider new draft maps at a public hearing scheduled for January 25, 2022.





**REDISTRICTING  
PARTNERS**

# City of Napa's Redistricting Schedule

- TOTAL OF 6 COMMUNITY WORKSHOPS:
  - ✓ Held at various locations throughout the City to attract a wide range of participants
  - ✓ Saturday and Sunday
  - ✓ After 6:00 P.M. on weekday evenings
  - ✓ Newly added virtual option
- TOTAL OF 5 PUBLIC HEARINGS:
  - ✓ 1 Public Hearing before maps are drawn
  - ✓ 4 Public Hearings after maps are drawn
  - ✓ Held during City Council Meetings at 6:30 PM
- City's deadline to adopt a FINAL map is April 17, 2022
- Spanish interpretation services will be available upon request at all Public Hearings & Community Workshops



# COMMUNITY WORKSHOPS:



Date and Time	Location
Wednesday, December 1, 2021, 6:30 PM - 8:00 PM	Napa Valley College Community Room 2277 Napa Vallejo Highway
Thursday, January 6, 2022 6:00 PM - 8:00 PM	***NEWLY ADDED VIRTUAL OPTION!*** Join Us via Zoom
Saturday, January 15, 2022 10:00 AM - 11:30 AM	Harvest Middle School Library 2449 Old Sonoma Road
Saturday, January 15, 2022 1:30 PM - 3:00 PM	Las Flores Community Center Gym 4300 Linda Vista Avenue
Sunday, January 30, 2022 10:00 AM - 11:30 AM	Irene M. Snow Elementary School Library 1130 Foster Road
Sunday, January 30, 2022 1:30 PM - 3:00 PM	St. John Baptist Catholic Church - Parish Hall 924 Napa Street





## ***PUBLIC HEARINGS:***

Date and Time	Location
 Tuesday, October 26, 2021 6:30 PM	Council Chambers at City Hall 955 School Street
 Tuesday, December 14, 2021 6:30 PM	Council Chambers at City Hall 955 School Street
Tuesday, January 25, 2022 6:30 PM	Council Chambers at City Hall 955 School Street
Tuesday, February 8, 2022 6:30 PM	Council Chambers at City Hall 955 School Street
Tuesday, March 8, 2022 6:30 PM	Council Chambers at City Hall 955 School Street



# Redistricting Webpage

## Quick Tour of Online Tools & Resources!

https://www.cityofnapa.org/1010/Redistricting

**DROUGHT UPDATE** The City of Napa is hiring! Read On... **DROUGHT UPDATE** Read On...

Create an Account - Increase your productivity, customize your experience, and engage in information you care about. Sign In

**GOVERNMENT** **SERVICES** **RESIDENTS** **BUSINESS** **HOW DO I...**



FAQs  
Schedule  
News  
Community of Interest Worksheet  
Draft Maps  
Draw A Map  
Find Your District  
Resources

Home » Government » Departments » City Clerk » Redistricting

### Redistricting

[En Español Abajo]

#### What is redistricting?



Las nuevas líneas determinarán cómo tú y tu comunidad

[www.cityofnapa.org/redistricting](https://www.cityofnapa.org/redistricting)



# Questions from Council to Staff or Consultant?

## Invite Public Input Regarding:

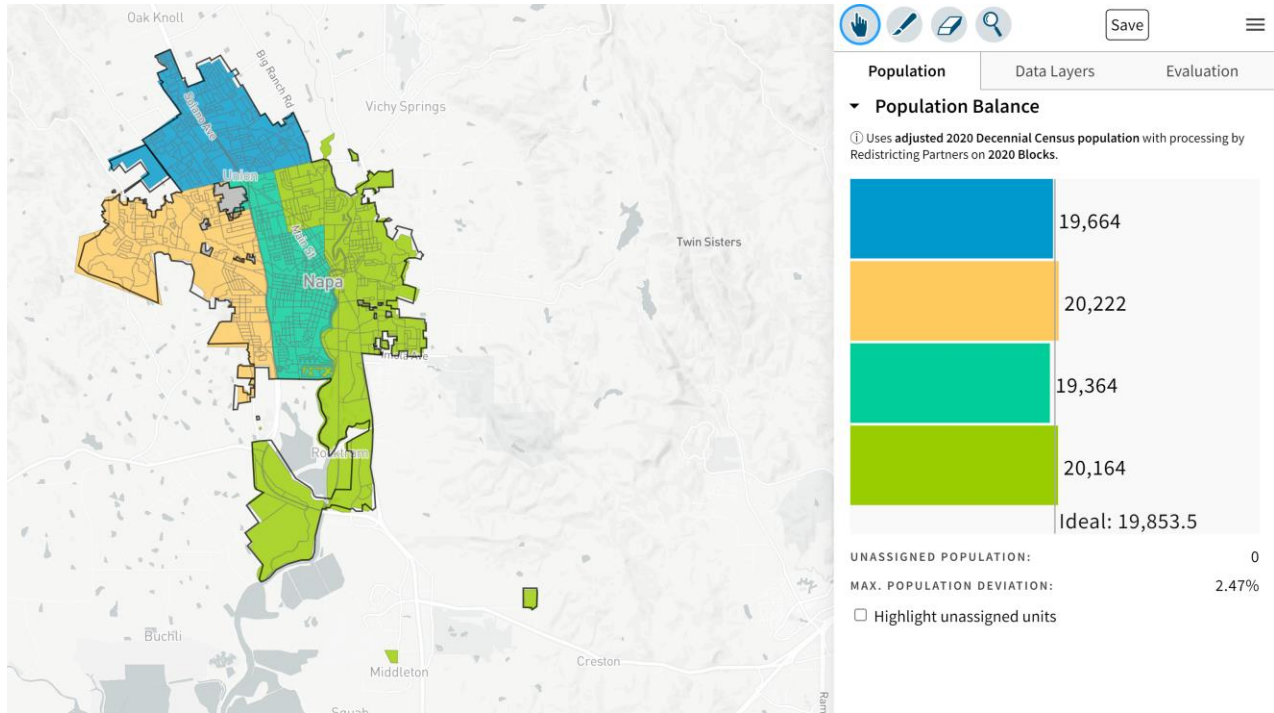
- ☐ Communities of Interest
  - ☐ District Boundaries
- ☐ Provide direction to City staff regarding the composition of district boundaries



## DistrictR Publicly Submitted Maps as of December 13, 2021

### Napa County Progressive Alliance: Make Shift of WP/LV Island to Central District Possible After Annexation

ID: 92917



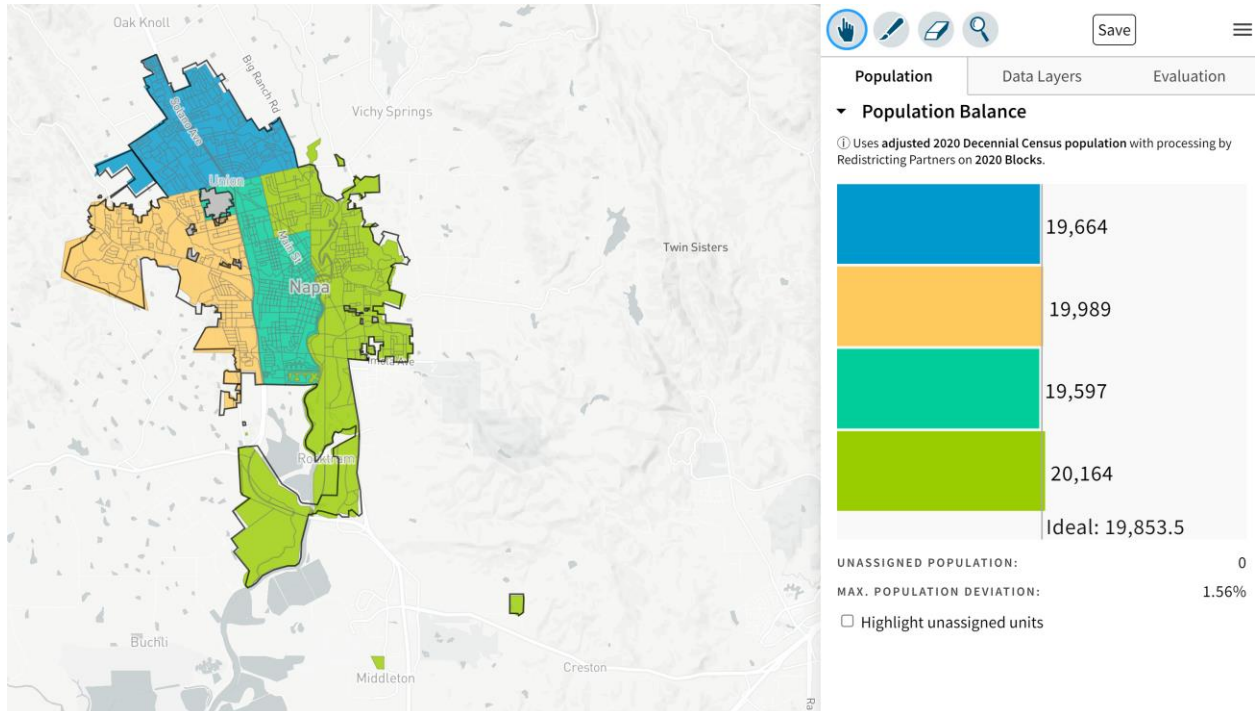
### ▼ Citizen Voting Age Population by Race

COMPARE	Hispanic population		
WITH	Asian population		
AND	Black population		
	Hispanic	Asian	Black
1	23.7%	3.1%	0.1%
2	20.6%	2.4%	0.7%
3	27.3%	0.5%	1.1%
4	25%	4.3%	0.4%
Overall	24%	2.6%	0.5%



## Napa County Progressive Alliance: WP/LV Island with Central District

ID: 92819



### ▼ Citizen Voting Age Population by Race

COMPARE Hispanic population

WITH Asian population

AND Black population

	Hispanic	Asian	Black
1	23.7%	3.1%	0.1%
2	20.4%	2.4%	0.7%
3	27.5%	0.5%	1.1%
4	25%	4.3%	0.4%
Overall	24%	2.6%	0.5%

December 13, 2021

Tiffany Carranza  
City Clerk  
City Hall  
955 School Street  
Napa, CA 94559

**Re: City of Napa Re-Districting Maps – Agenda Item 3.A,  
City Council Public Hearing December 14, 2021**

Dear Ms. Carranza,

Please accept this letter as my personal comments to the City of Napa's 2022 re-districting process.

I want to start by acknowledging the good and sincere work done by the City of Napa staff and Council in both the prior, initial districting process as well as the current re-districting efforts. As you may recall, I attended every City Council meeting and submitted comments during the initial 2020 districting process. I attach those comments to this letter and resubmit them as applicable comments to the 2022 re-districting process. I hope you will take these comments into consideration again as you complete the process. Thank you for the opportunity to provide comments.

My prior comments spoke to the straightforward criteria and priorities for establishing district boundaries under California Elections law. The law states that along with a balanced population, the City of Napa shall create maps that prioritize (1) geographic continuity, (2) respecting the geographic integrity of local neighborhoods, (3) creating easily identifiable and understandable districts, and (4) not favoring the connection of more distant populations. I commend the City on its website and the presentations prepared by the City's consultants, which do a very good job explaining these criteria. In simple terms, the law's intent is to avoid gerrymandering.

State law required the City to follow those criteria and priorities in the adoption of the original district boundaries in 2020. The City did a great job in 2020 creating and adopting district maps that carefully applied the criteria and resulted in fair, thought-out and complaint districts. Because those same rules apply to re-districting and there was no major change in Napa's population distribution, the district maps adopted in 2020 should remain as the maps for in 2022.



In 2022, Napa continues to have highly integrated racial and economic neighborhoods. Minority groups, families and individuals evenly reside around Napa with majority groups. This is sometimes neighbor to next door neighbor throughout the City, like where I live near downtown, or in smaller neighborhood areas located throughout and integrated into the City. Like the City accomplished in 2020, the 2022 mapping process should not result in the segregation of Napa's communities, but instead should respect Napa's integrated neighborhoods, maintain districts that prioritize geographic continuity, retain districts that are easily identifiable and understandable, and keep neighborhoods compact and not connect more distant or isolated areas. For these reasons, I hope you will reject revising the district maps in any manner that departs from the reasoning and the logical geographic boundaries on which the 2020 district maps were created.

I applaud your efforts and hard work to complete the re-districting process. Thank you for the opportunity to comment.

Respectfully,



Kevin Teague

## March 7, 2020 Community of Interest Worksheet



From: noreply@civicplus.com  
Subject: Online Form Submittal: Community of Interest Worksheet  
Date: March 7, 2020 at 4:48 PM  
To: [REDACTED]

## Community of Interest Worksheet

Name: Kevin Teague

Are you a resident of Napa? Yes

Email Address: [REDACTED]

1) What is the nature of the common social or economic interest of your community? You can describe what the common interests of your community are and why or how they are important.

Our community was primarily built before the 1950s with some pockets of newer homes. It was built as a blue-collar neighborhood. We are a diverse community with original home owners in their 90s to young families, we have retirees, wine industry executives, hospitality workers, teachers, tradespersons, lawyers, government workers, doctors and farm workers -- diversity. We are walkable from the Yacht Club/Riverpark to Lincoln or even Trancas. We are impacted by the floodplain and flooding. We surround downtown.

2) Where is your community located? You can define it by neighborhood, streets, address, proximity to a key landmark (such as a school or community center), or other boundaries.

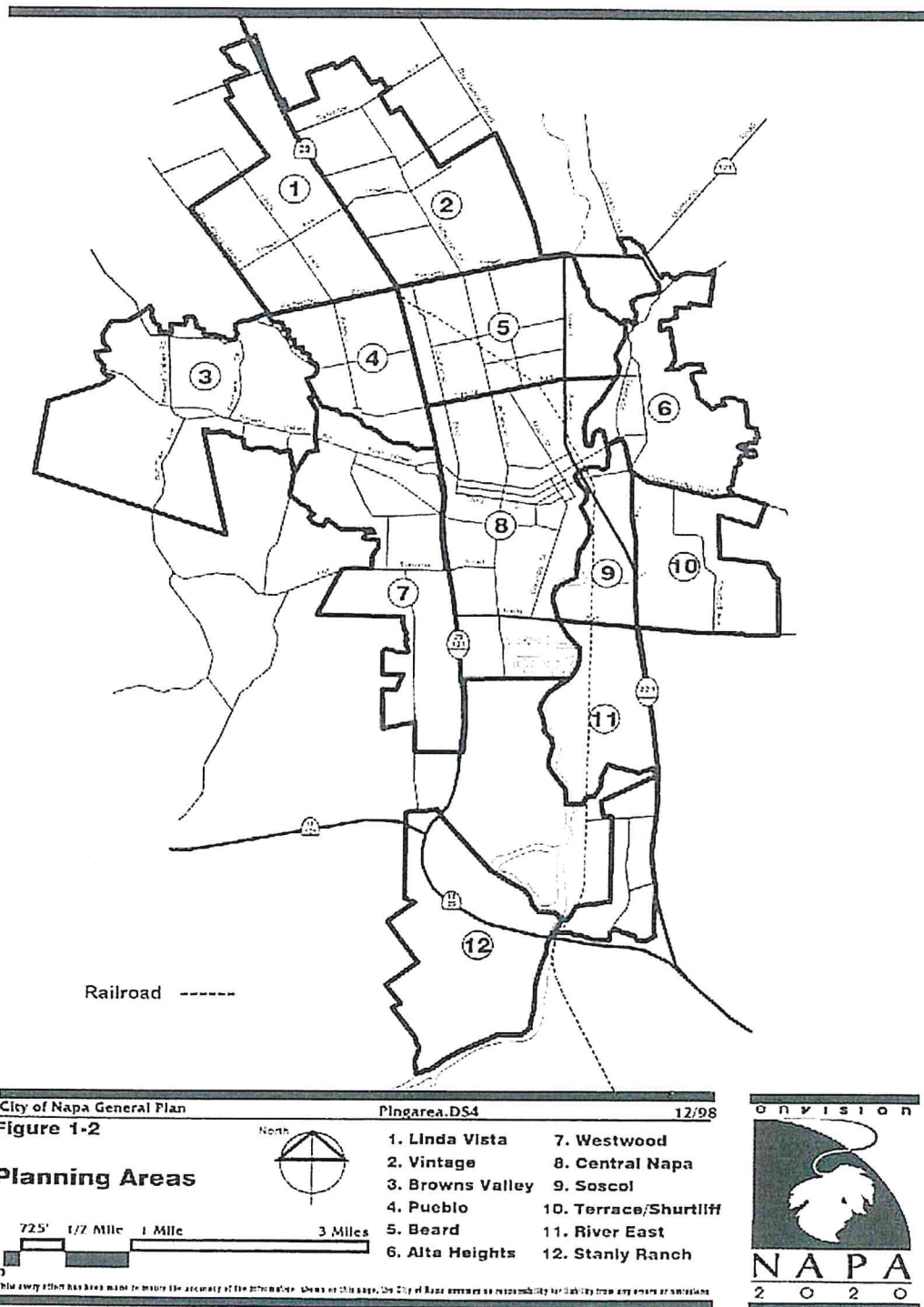
I live in old, central Napa. It is easily definable by the Napa River on the east. It starts at the Yacht Club/Riverpark and spans north between the River and the Highway up through downtown all the way to Lincoln or even Trancas. It includes downtown, river park, the tree streets, fuller park, Abajo, the alphabet streets, Jefferson south of Lincoln, Napa High School and up to Van Windens.

3) What are the geographic definers/boundaries of your neighborhood? Examples of definers/boundaries could be highways, roads, rivers, hills, or parks.

See above. It is Highway 29 on the west, the Yacht Club/City limits to the South, the River on the east up to Third Street (the end of the navigable portion), then Soscol up to Lincoln then up Jefferson to Pueblo or Trancas. Note that the neighborhoods on either side of the River do not connect in a pedestrian or bike friendly way until Third Street. The Imola Bridge is not a neighborhood connector. I have tried walking it -- it is not pedestrian friendly or provide a community connection. .

4) What is the rationale for your community of interest to be used in this districting? Please describe how the issues before the City Council have a unique impact on your group.

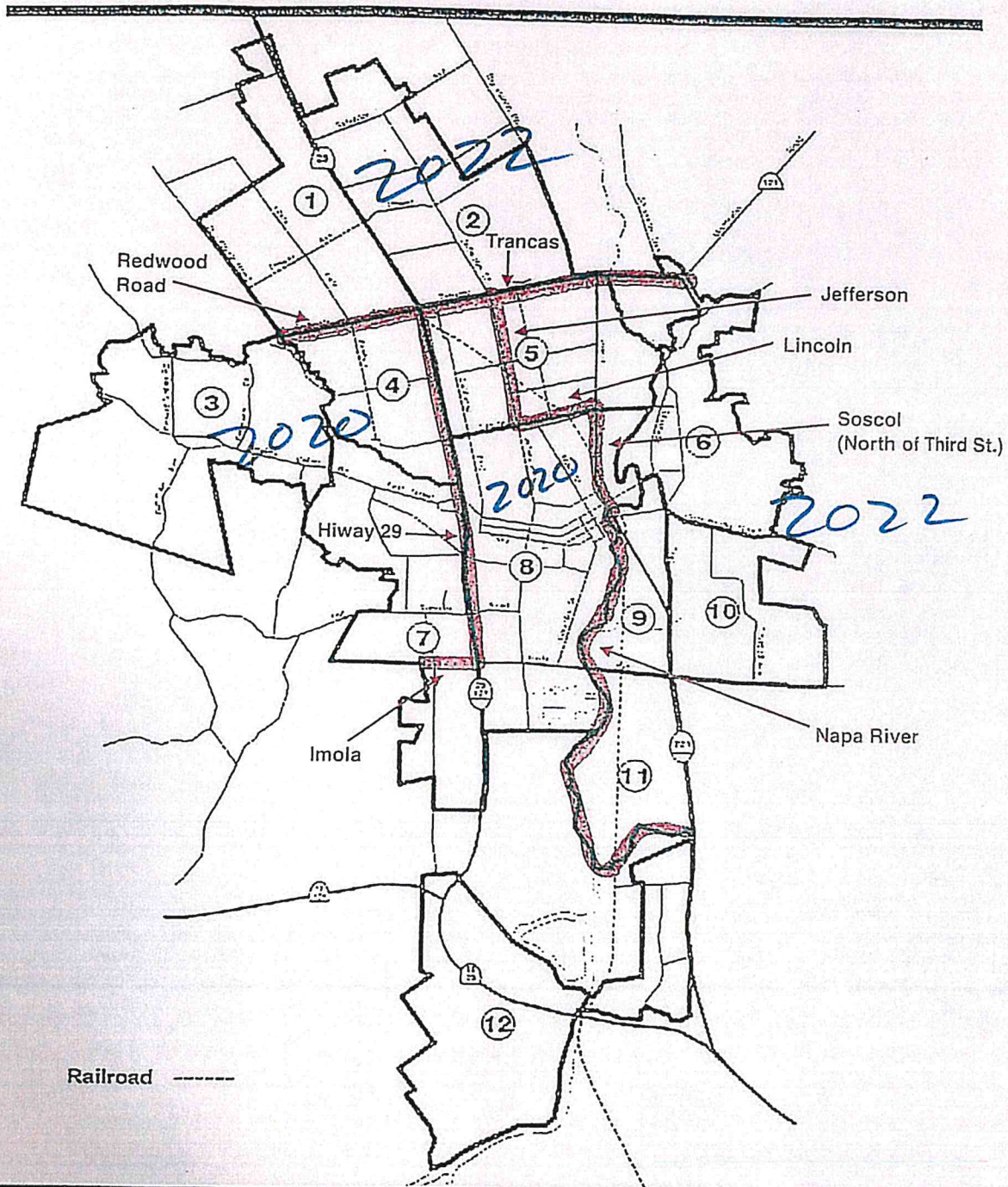
Keeping the City connected around the central core that is walkable and bikable. The blue color roots and flood plain give a common character to the entire area. It is also a built-out and mature neighborhood, which may distinguish it from others. The eclectic mix of diversity house to house rather than neighborhood to neighborhood makes us one central community.



March 8, 2020 Community Workshop Submission



Kevin Teague  
our town Resident.



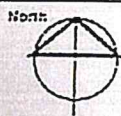
City of Napa General Plan

Pingarea.DS4

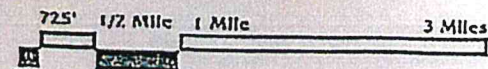
12/98

Figure 1-2

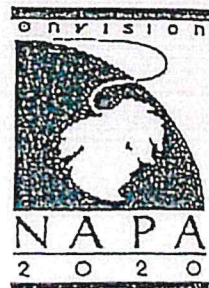
### Planning Areas



- |                  |                       |
|------------------|-----------------------|
| 1. Linda Vista   | 7. Westwood           |
| 2. Vintage       | 8. Central Napa       |
| 3. Browns Valley | 9. Soscol             |
| 4. Pueblo        | 10. Terrace/Shurtliff |
| 5. Beard         | 11. River East        |
| 6. Alta Heights  | 12. Stanly Ranch      |

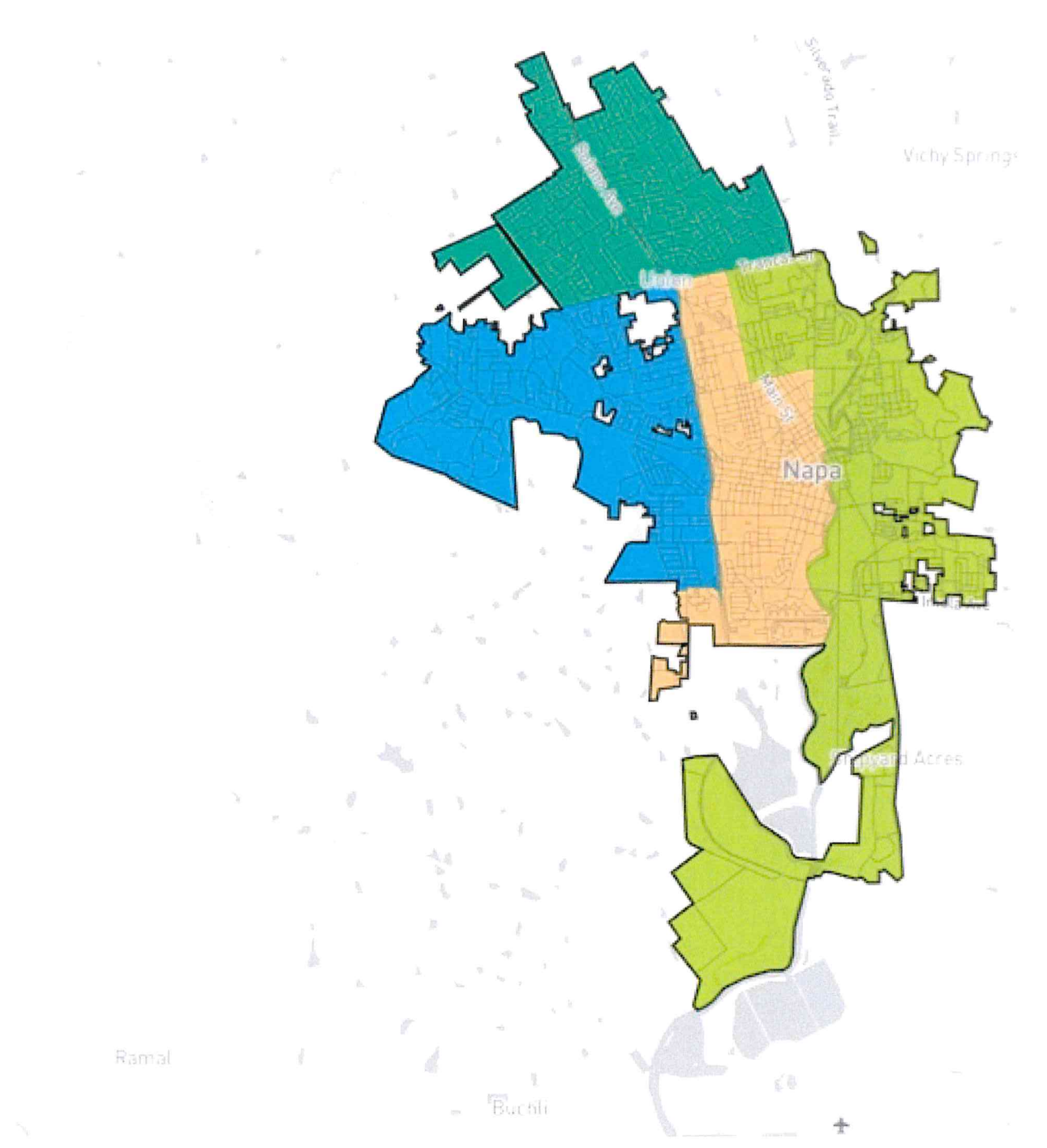


While every effort has been made to ensure the accuracy of the information shown on this page, the City of Napa assumes no responsibility for liability from any errors or omissions.



March 9, 2020 "Districtr" Map

District





March 14, 2020 Letter

Kevin Teague  
1455 First Street, Suite 217  
Napa CA 94559

March 14, 2020

Mayor Techel and Napa City Council  
City Hall  
955 School Street  
Napa, CA 94559  
*Sent via email*

**RE: CITY OF NAPA DISTRICTING/PROPOSED MAPS**

Dear Mayor Techel and Council,

I am writing to you about the district elections process and the proposed maps A, B, C, and D recently published on the City of Napa website. As explained below, I support Map A because of all the maps it balances population, it has the best geographically contiguous boundaries, it does not divide the geographical integrity of neighborhoods and communities of interest, the boundaries are easily identifiable and understandable, and they are compact.

As you know, I have attended and have provided testimony at every City Council meeting on the districting topic. I also attended the community workshop, I submitted a community of interest worksheet on March 7 (attached) and submitted a 'districtr' map on March 9 consistent with my worksheet, which is basically the same as Map A.

**GENERAL PLAN NEIGHBORHOODS**

At both hearings I discussed the importance of looking at the Vision 2020 City of Napa General Plan neighborhood planning map for guidance on defining communities of interest. I was disappointed to see Zillow and precinct maps continued to be used as the base maps without also access to or mention of the General Plan maps. These official maps are useful and informative. (See attached.) Map A utilizes these maps.

**MY NEIGHBORHOOD(S) – CENTRAL NAPA**

My focus has been on my neighborhood. Below I summarize some of my testimony because most of the maps published do not address that are part of the public record.

I live in what I have known as the "tree streets" since I was a kid back in the 1970s. Other names include Abajo, Old Town, Central Napa, Downtown, South/Central, etc. It is the part of our city centered around downtown located between Highway 29 and the Napa River. The tree streets are in that area south of downtown bounded by Oak and Spruce Streets.

The following describes the key characteristics of the Central Napa district:

**Napa River/East:** In my neighborhood the significance of the Napa River, especially navigable portion of the River, cannot be overstated. This is the section of Napa River south of the Third Street Bridge through the southern boundaries of the City. Here, the River is the most significant physical barrier in all of Napa. The Imola Bridge is not a neighborhood connector. It feels more like a freeway. What this means is that the west side of the River is disconnected from the east side of town, from Riverpark/Yacht Club north to downtown.

**Riverpark, South Minahen/South:** My neighborhood extends into the entire Riverpark area as it has that same river barrier. My friends and family that live in the Riverpark area frequently walk or bike into downtown and in and around the tree streets too. When Vallergas was in Riverpark, it was our everyday store. My son walked to friends' houses off of South Minahen. I walk my dog to Sweeney's sporting goods and Mo's Hotdogs all the time.

**Highway 29/ West and North:** On the west side of downtown, Highway 29 presents a similar barrier but with a few more connection points. North of downtown, the neighborhoods are similar to south of downtown. They are similar in neighborhood age, diversity of residents, style of homes, walkability in and around downtown, blue collar roots, proximity to downtown, and have the most old urban feel in town. This area stretches across Lincoln to Pueblo Trancas and includes Napa High School and Van Winden's.

**Population Balance/ Lincoln, Jefferson and Soscol:** The logical lines to balance population are in the northeast side of Central Napa. Lincoln and Jefferson Streets provide logical, identifiable and easy to understand boundaries on the North side. The area west of Jefferson north of Lincoln to Trancas share similar characteristics of the Central Napa area discussed above. On the East side, the boundary should be Soscol up to Lincoln west of the River rather than the River. When you consider the areas around Beard, Nob Hill, eastern Pueblo and Stonehouse, they share many characteristics with the East side of Napa. Accordingly, a boundary in this area does not divide a community of interest, does not change the integrity neighborhoods and follows the most understandable and identifiable streets.

**Flooding and Floodplain:** Most importantly, what socially, economically and geographically connects all of the Central Napa area neighborhoods is the floodplain, flooding and the Napa flood project. With the Napa River and Napa Creek, we share the same flood impacts, flood insurance, building restrictions, and a community that comes together during a flood event, which for me goes back to sandbagging in downtown in 1986. All of these items with their very distinct geographic features, barriers and significant identifiable streets lead us to logical, efficient and non-divisive community boundaries.

These boundaries demonstrate that it is geographically contiguous; that the geographical integrity of neighborhoods and that communities of interest are not divided; that the boundaries are easily identifiable and understandable; that they are compact; and that they are not drawn for political or racial purposes.



I spoke to these issues at the various hearings. This evidence was not contradicted by any testimony whatsoever, other than the testimony from members of the Plaintiff group which questioned why I would include the area east of Coombs Street in the tree streets as part of our Central Napa area. This was the only question even though that area is physically disconnected from the rest of the City by the River, it shares all the same community characteristics, issues and benefits, and looks and feels the same as the area across Coombs Street. The only thing discussed that distinguishes that side of Coombs Street from the side I live on is the slightly higher Hispanic population shown on the demographic maps. I did not see that as a reason to not be considered as the same community (personally, I enjoy my relationship with my Hispanic next-door neighbors, literally).

There was no evidence presented contrary to the boundary evidence discussed above. Nor was there any evidence that substantiated any other boundaries under the districting criteria than the points I raised and that are shown in Map A. This is because it makes sense.

#### **OTHER MAPS DO NOT ACHIEVE THE MAPPING CRITERIA**

**Map B.** Map B draws a line in the middle of the tree streets and puts my home in the neighborhood on the other side of the River. It divides my Old Town neighborhood down Ash Street, even though that is smack dab in the middle of the 1930s Devita homes. Yet, it comes down Franklin to my street and picks up two blocks east of me. My neighbors on Ash and the streets north, with whom we walk dogs nearly every day together, meet at Shearer School and regularly get together at Tannery Bend, absolutely share the same neighborhood, community and interests. If you need to experience this yourself, I invite you to my house so you can walk the neighborhood with me and see what is obvious. Slicing downtown in the middle of the tree streets, in the middle of the of Devita homes and putting us on the other side of the river outside of our community of interest makes no sense. Map B has areas separated by water, divides a community of interest, does not preserve the integrity of the downtown neighborhoods and does not follow the most understandable and identifiable natural and artificial barriers.

**Map C.** Map C does a pretty good job with the area around my house, however it disconnects the north side of downtown from the south side. Those areas are functionally, socially, geographically and logically connected to each other for the reasons mentioned above. The neighborhoods that are part of and connected to downtown are far more in the same community of interest than neighborhoods to the far east side across the River, Soscol and Silverado Trail. Map C also gets the barrier of Highway 29 wrong. Highway 29 is a much bigger physical and psychological barrier south of Trancas than it is north of Trancas. Map C got that backwards. Map C divides my community of interest, does not

preserve the integrity of the downtown neighborhoods and does not follow the most understandable and identifiable natural and artificial barriers.

**Map D.** Map D shares many of the same issues as Map B described above and more. The River is the is the dividing line, not pockets around Coombs Street. It severs the tree streets not only at Coombs, it notches into Franklin Street at the historic redwoods and grabs Randolph Street then notches back. Why? I walk that section of Franklin and Randolph nearly every day on my way to work downtown and when walking my dog after work. Now that is not part of my neighborhood? Again, please come walk my neighborhood with me. The gerrymandering west of Highway 29 is inconsistent with the General Plan neighborhoods, logical boundaries, geographic barriers and connected communities. For the reasons explained above, contrary to Map D, my neighborhood is far more connected geographically, socially and physically to Riverpark than the West Pueblo area (which I know first-hand since it is where I grew up). Map D boundaries divides several communities of interest, does not preserve the integrity of neighborhoods and does not follow the most understandable and identifiable natural and artificial barriers.


**CONCLUSION: MAP "A" BEST MEETS THE MAPPING CRITERIA AND IS BEST FOR NAPA**

Mapping is not a popularity contest under the districting criteria. Given the population breakdown, the legal criteria, the testimony presented at the prior City meetings and hearings, the map drawing at the workshops and practical everyday experience in Napa, Map A is the only logical map and it should be selected as the first map for the City of Napa. It is easily understandable as long as you know where Highway 29, the River, Soscol, Lincoln, Jefferson and Trancas/Redwood are located. I think everyone in Napa will understand these simple logical boundaries.

For these reasons Map A is the best and only map that correctly meets all of the required criteria in the proper order.

Thank you for all of your hard work on this matter.

Sincerely,



Kevin Teague

**From:** [Napa County Progressive Alliance](#)  
**To:** [Redistricting](#)  
**Subject:** Written Public Comment for Public Hearing on Redistricting on Dec. 14, 2021, Item 3A  
**Date:** Monday, December 13, 2021 11:48:54 PM  
**Attachments:** [Rafferty re Integration of WPLV Island.pdf](#)

You don't often get email from [napacountyprogressivealliance@gmail.com](mailto:napacountyprogressivealliance@gmail.com). [Learn why this is important](#)

[EXTERNAL]

Dear Napa City Council (and City-hired demographer):

At the first public hearing, Napa County Progressive Alliance Steering Committee member, Larry Alexander, submitted public comment on the West Pueblo/Linda Vista county island where he lives. He explained how this island represents a community of interest bound together by race, being a majority Latinx, socio-economic status, being primarily working class, a concern regarding inadequate and aging infrastructure, and a history of being excluded from the civic life of the city. He stated that he believes this community has more in common with the central district, District 4 directly to the east, than District 2, dominated by Browns Valley, which currently surrounds it. His observations are corroborated by data we submitted in 2020, as well as by the map the city's demographer, Paul Mitchell, submitted that joined this island with the central district in draft map Plan D to create the highest Latinx citizen voting age population district of the final four maps he presented to the Council.

The city attorney stated that the City will be annexing these county islands but not until after redistricting. He stated that while council members cannot count the population of this island during redistricting, they could be forward thinking and consider how annexation of this island and its 1,400 residents would affect the districts and make decisions accordingly.

The only draft map being presented at tomorrow's hearing is the current district map, which does not address the issues surrounding the incorporation of this large island into a future district, issues we brought up last year when the map was adopted.

We have resubmitted a letter written by our attorney Scott Rafferty dated April 26, 2020. In it he explained that unless the City passes an ordinance, the island would automatically go into District 2, creating a population variance of more than 13.3% based on 2010 census data, a variance that would likely be even higher now using 2020 census data. He proposed a solution that would respect the future desires of the island residents, suggesting that the city lands just east of the island be joined with the central district so that upon annexation the island could stay in District 2 or join with District 4 or be split at Carol Drive with the western half staying in District 2 and the eastern half joining with District 4. [We submitted that map using DistrictR. https://bit.ly/3pX3Vj4](#)

While we, again, urge you annex this island now, so the population can be counted, and it can be incorporated now into a district, at the very least you can demonstrate good faith and a respect for the desires of these future city residents by attaching it to both districts; that way, without having to pass a resolution, it could join to either district or be split between them. This solution would help equalize the population between districts 2 and 4, guarantee flexibility in incorporating the island into a district upon annexation, and ensure island residents have the opportunity to participate in a meaningful way in the decision.

If you are unwilling to address the West Pueblo/Linda Vista island issue now when it is timely and convenient, it is unlikely that you will do it in the future.

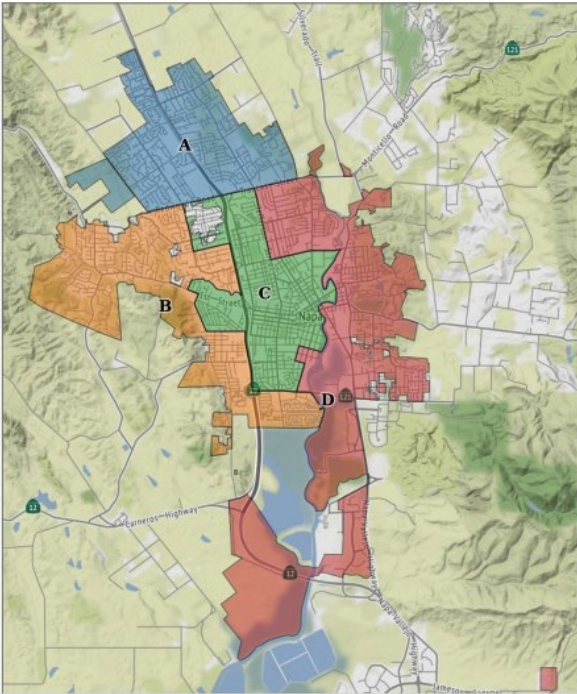
Sincerely,  
Amy Martenson  
Napa County Progressive Alliance, Chair

P.S. Attached is Larry Alexander's recent letter to the editor, "Don't Wait to Annex the Largest Island."  
[https://napavalleyregister.com/opinion/letters/dont-wait-to-annex-the-largest-island/article\\_f0d62eb5-4bf0-564a-879e-0010c2a45b28.html?utm\\_medium=social&utm\\_source=email&utm\\_campaign=user-share](https://napavalleyregister.com/opinion/letters/dont-wait-to-annex-the-largest-island/article_f0d62eb5-4bf0-564a-879e-0010c2a45b28.html?utm_medium=social&utm_source=email&utm_campaign=user-share)



## Plan D

### District Overview



### Base 2010 Census

	A	B	C	D
Population	19,340	18,493	19,321	19,755
Deviation	115	-732	96	530
Deviation %	0.6%	-3.8%	0.5%	2.8%
No Eth	13,255	12,459	9,232	10,806
No Eth %	68.5%	67.4%	47.8%	54.7%
Latino	5,449	5,491	9,711	8,265
Latino %	28.2%	29.7%	50.3%	41.8%
Asian	528	433	252	542
Asian %	2.7%	2.3%	1.3%	2.7%
Black	108	110	126	142
Black %	0.6%	0.6%	0.7%	0.7%

### Citizen Voting Age Population (CVAP)

	A	B	C	D
Total US 18+	13,891	12,410	11,361	13,477
No Eth CVAP	9,977	10,157	7,456	9,101
No Eth CVAP %	71.8%	81.8%	65.6%	67.5%
Latino CVAP	3,313	1,927	3,627	3,719
Latino CVAP %	23.8%	15.5%	31.9%	27.6%
Asian CVAP	572	248	130	486
Asian CVAP %	4.1%	2.0%	1.1%	3.6%
Black CVAP	29	78	148	171

# SCOTT J. RAFFERTY

## ATTORNEY AT LAW

1913 WHITECLIFF COURT  
WALNUT CREEK CA 94596

(202)-380-5525  
RAFFERTY@GMAIL.COM

April 26, 2020

Ms. Tiffany Carranza  
Clerk  
City of Napa  
via electronic mail

Dear Ms. Carranza:

My client and I hope to write separately, before or after tomorrow's meeting, to reflect on the successes and accomplishments of this proceeding, the first to comply with the FAIR MAPS Act. You, the council, and the staff have set a model that every city in the state is well-advised to consider when they redistrict next year. I know that, in your case, it was a lot of hard work.

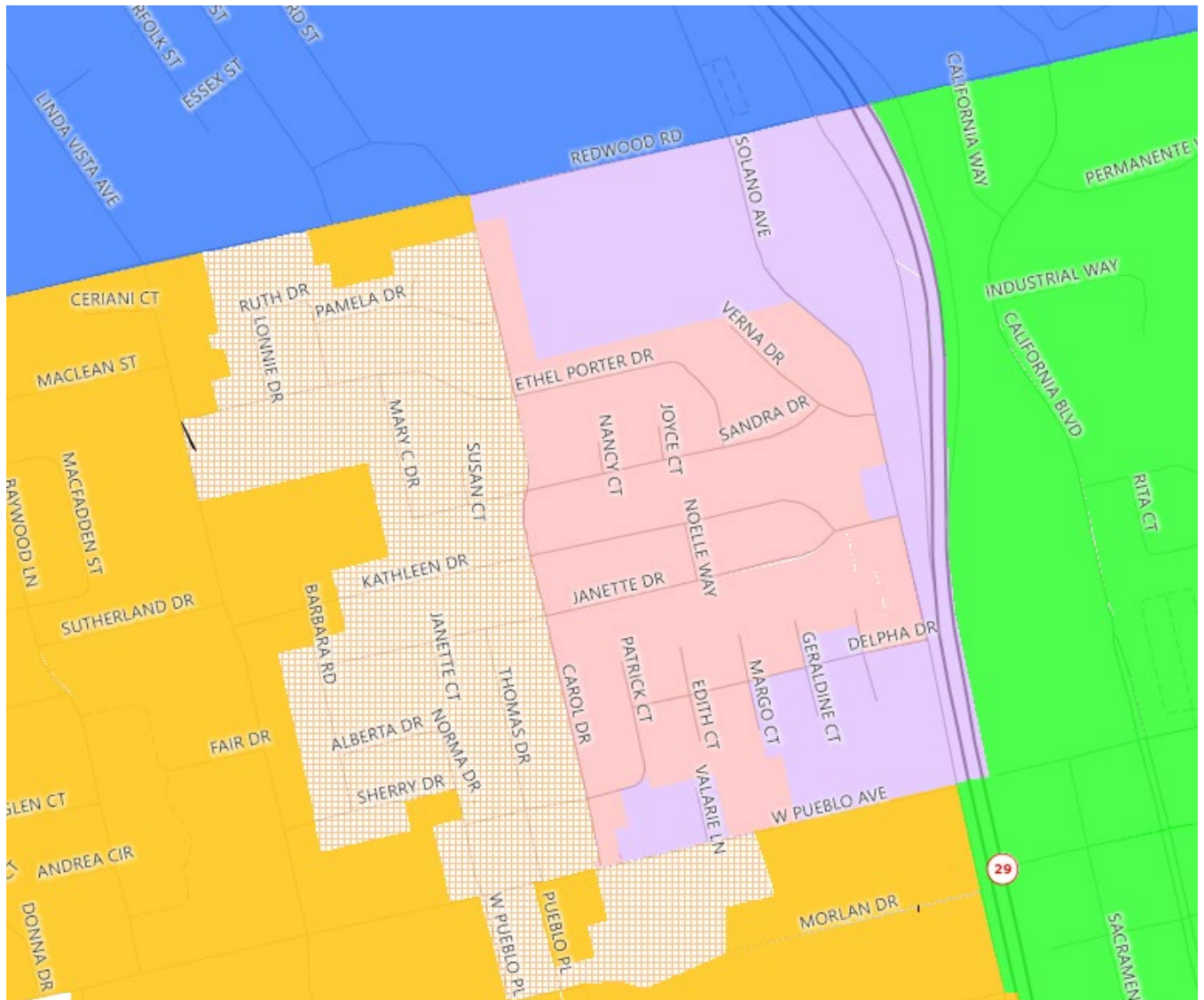
We have a continuing concern for the integration of the islands, especially West Pueblo/Linda Vista, into the city upon their annexation. As added effective January 1, 2020, Section 21623(a) requires a city to add new territory "to the nearest existing council district without changing the boundaries of the other council district boundaries [sic]." Map A places the entire West Pueblo Island inside District B (Brown's Valley). We question whether this is appropriate, especially since it will cause a population variance of more than 13.3%. Our view is less important than the desires of the residents at the time they join the city. Therefore, we propose two alternative interim approaches for the Council and its demographer to consider.

- (1) Move these eight census blocks southwest of the intersection of Redwood Road and St. Helena Highway from District B to District C (purple).

This involves the motels and retail along Solano Avenue and a population of 253 (only 132 of whom are adult citizens). With this small change, the West Pueblo Island adjoins both B and C, and can therefore be attached to either. Any movement of population out of B mitigates the excess variance. After annexation, one possibility would be to attach the twelve blocks east of Carol Drive to district C. The blocks have an additional population of 1,065 (pink). This would reduce the population variance to 8.4%.

The combined pink and purple areas correspond to a block group that will (after annexation) have the lowest per capita income in the City of Napa (\$20,467). Sixteen percent of the population over 5 speaks Spanish, but does not speak English well.

Twelve percent lives in poverty. Eight percent are not citizens. Forty-five percent of eligible voters are Latino. We believe that the Island, or at least its eastern half, has more in common with district C than district B, but the Council should give the opinions of the City's new residents greater weight.



Blue – District A

Orange – District B

Green – District C

Purple, Pink and Crosshatch Orange – Island

- (2) Amend the ordinance to govern how annexations are added to existing districts.

New Section 21623(c) allow charter cities to adopt by ordinance “a different standard for adding new territory to existing council districts.” Conceivably, this could provide additional flexibility in the case of West Pueblo and other future annexations. I defer to Mr. Barrett on whether such an ordinance is appropriate, and what standard it might establish.

Sincerely,

A handwritten signature in black ink that reads "Scott Rafferty". The signature is written in a cursive, slightly slanted style.

Scott J. Rafferty