

DRAFT MAP SUBMISSIONS FROM COMMUNITY MEMBERS

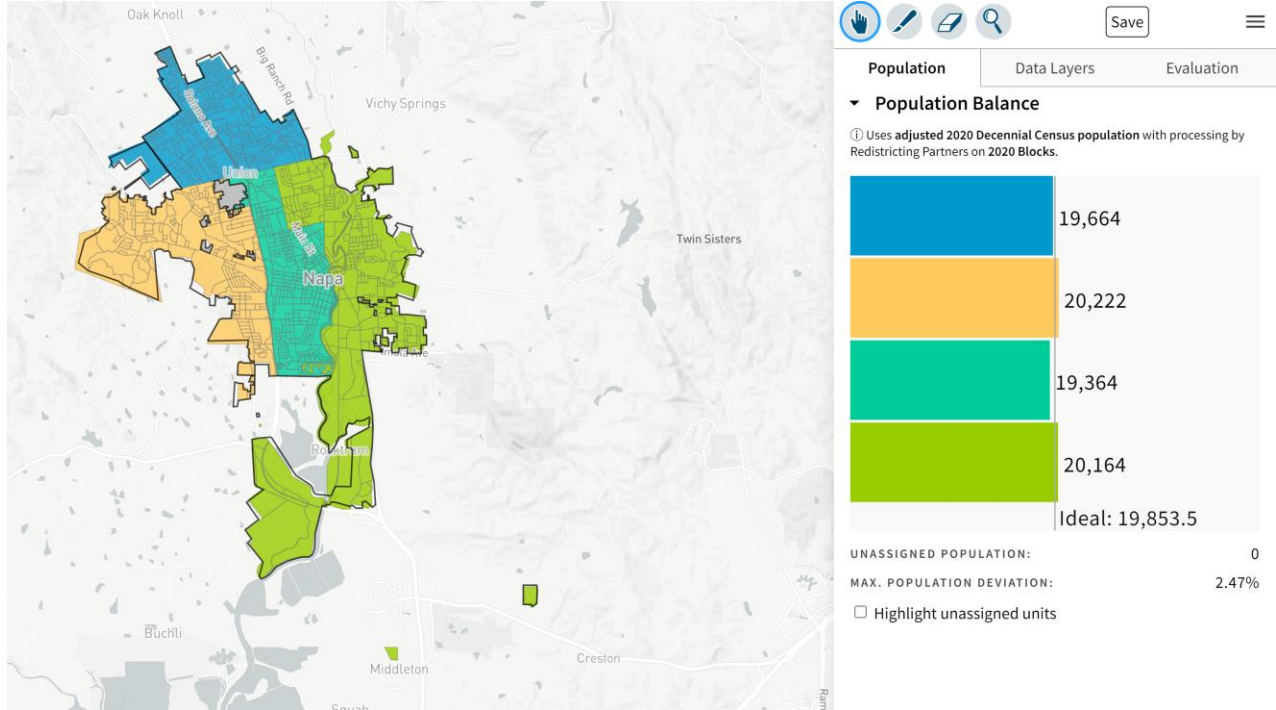
- Draft Map Submissions from Community Members:
 - 1) Napa County Progressive Alliance: WP/LV Island with Central District received on December 12, 2021 (ID 92819).
 - 2) Napa County Progressive Alliance: Eastern Half of WP/LV Island With Central District received on December 12, 2021 (ID 92903 – NOTE: Chair Amy Martenson requested to be omitted because submitted in error).
 - 3) Napa County Progressive Alliance: Make Shift of WP/LV Island to Central District Possible After Annexation received on December 12, 2021 (ID 92917).
 - 4) Let West Pueblo/Linda Vista County Islands Residents Choose Between Districts 2 and 4 After Annexation While Balancing Population Between the Two Districts received on December 30, 2021 (ID 96979).
 - 5) Napa 2022 received on January 13, 2022 (ID 101095).



DistrictR Publicly Submitted Maps as of December 13, 2021

Napa County Progressive Alliance: Make Shift of WP/LV Island to Central District Possible After Annexation

ID: 92917



▼ Citizen Voting Age Population by Race

COMPARE

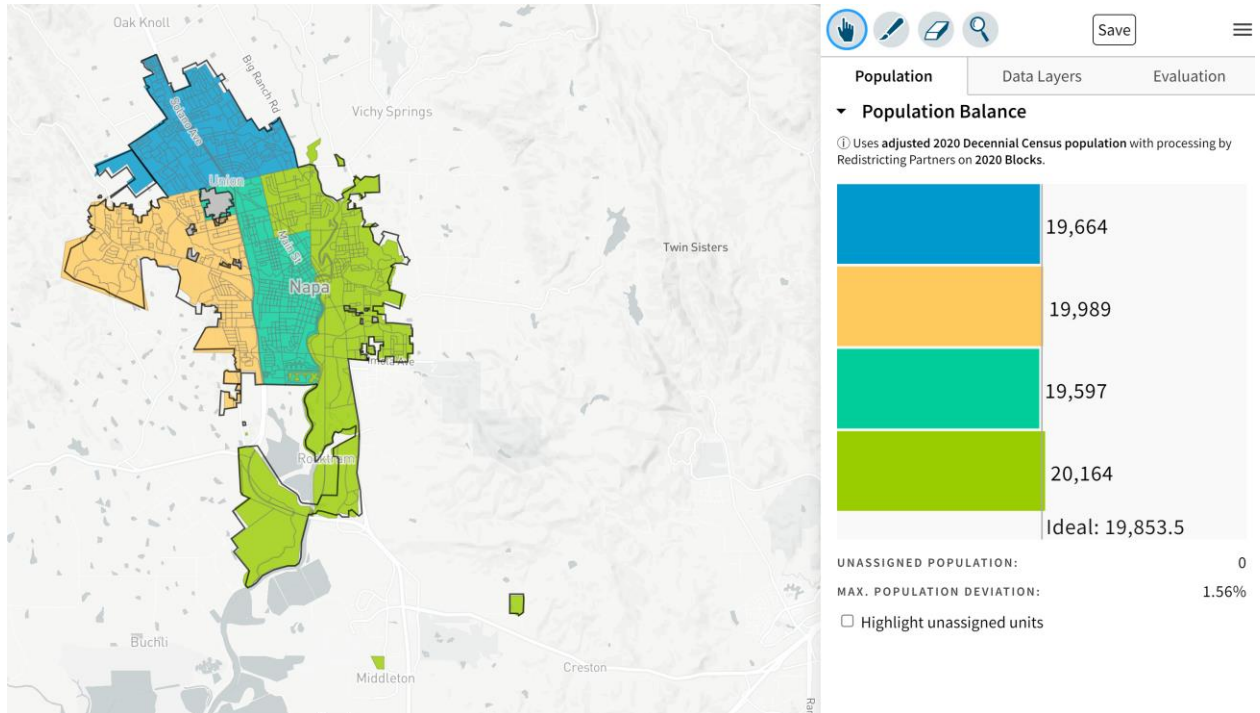
WITH

AND

	Hispanic	Asian	Black
1	23.7%	3.1%	0.1%
2	20.6%	2.4%	0.7%
3	27.3%	0.5%	1.1%
4	25%	4.3%	0.4%
Overall	24%	2.6%	0.5%



Napa County Progressive Alliance: WP/LV Island with Central District
 ID: 92819



▼ Citizen Voting Age Population by Race

COMPARE

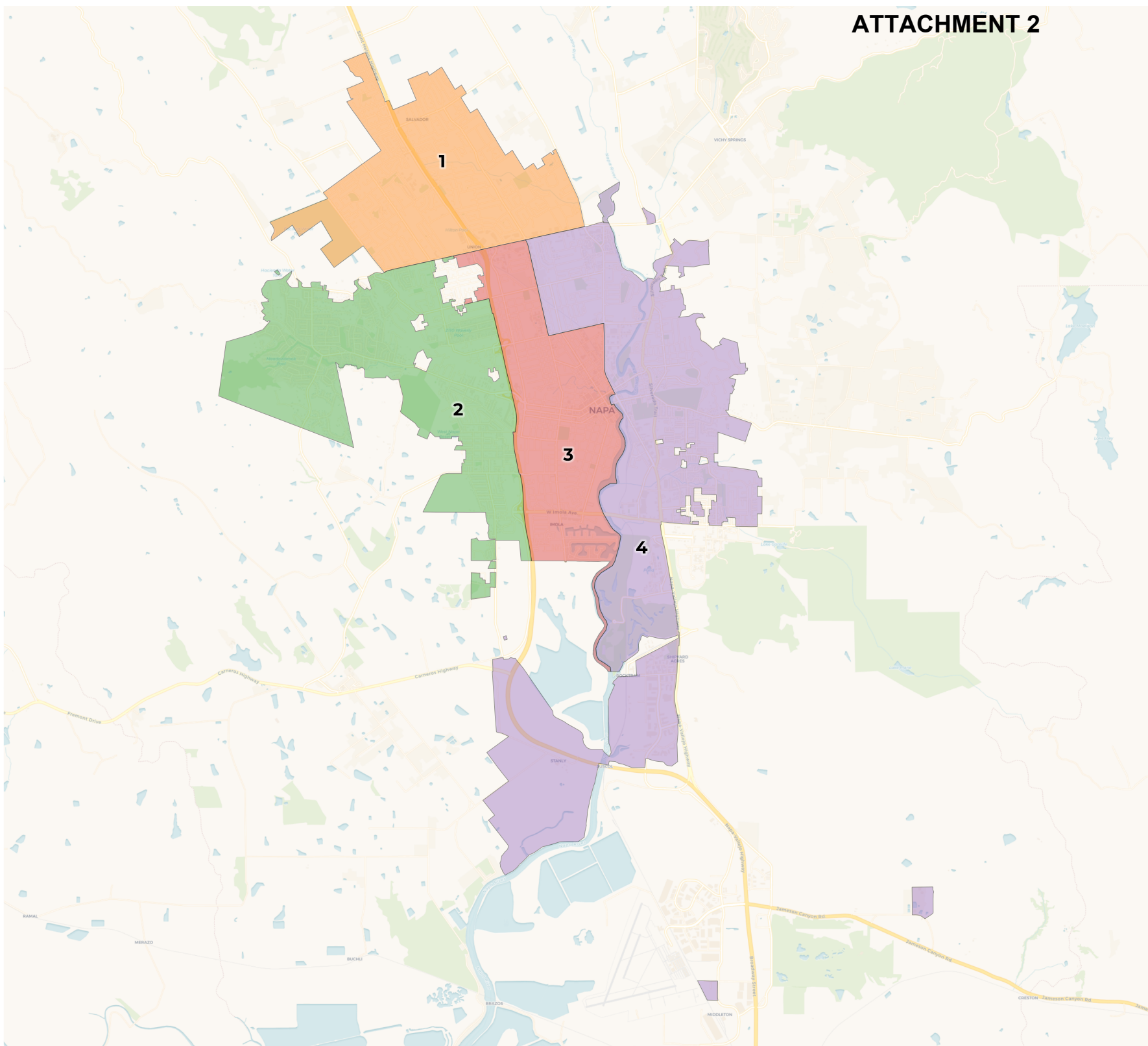
WITH

AND

	Hispanic	Asian	Black
1	23.7%	3.1%	0.1%
2	20.4%	2.4%	0.7%
3	27.5%	0.5%	1.1%
4	25%	4.3%	0.4%
Overall	24%	2.6%	0.5%

**REDISTRICTING
PARTNERS**

City of Napa
DistrictR ID 96979



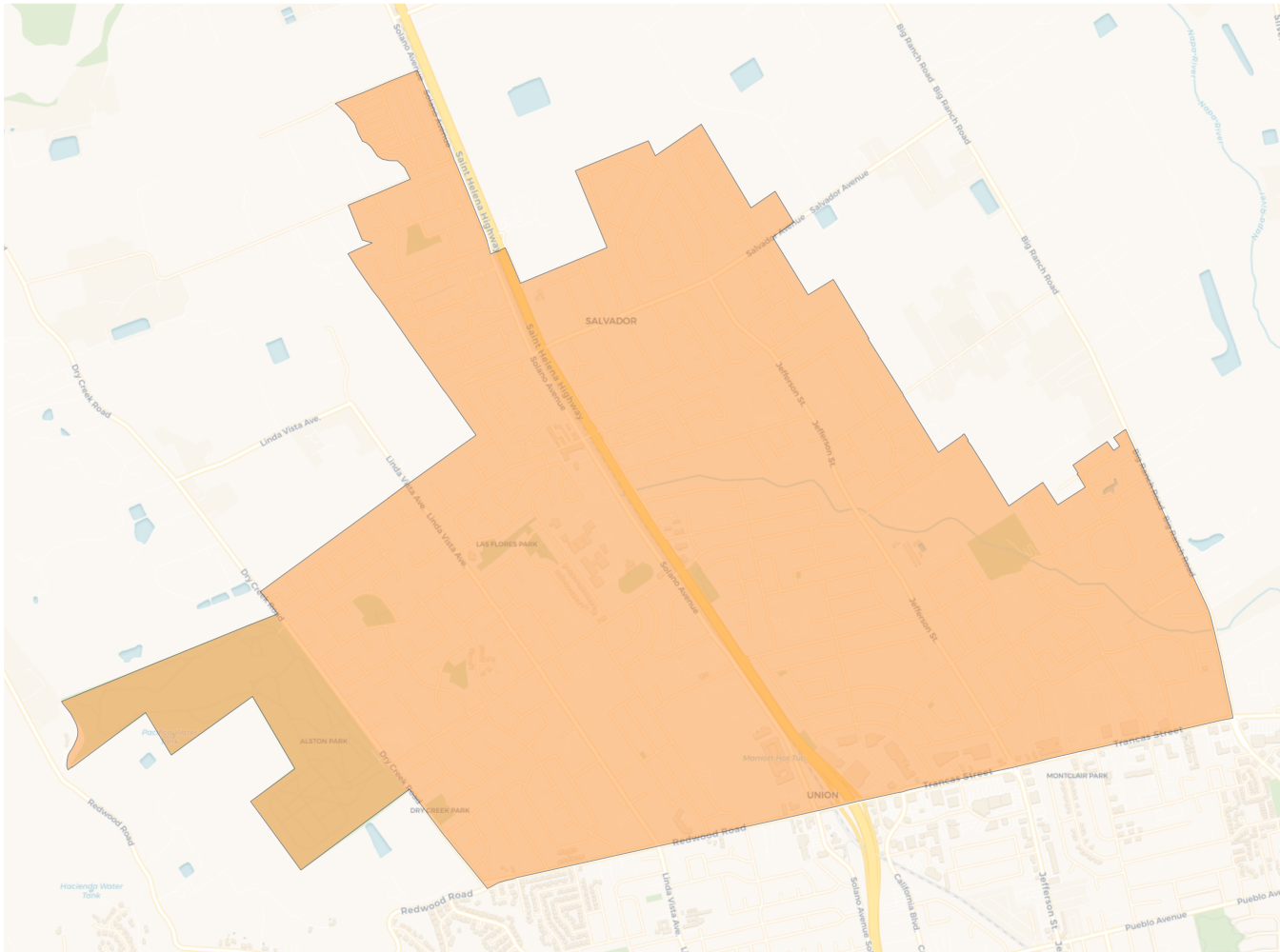
2020 Census

	1	2	3	4
Population	19,664	20,221	19,364	20,164
Deviation	-189	368	-489	311
Deviation %	-1.0%	1.9%	-2.5%	1.6%
Other	12,638	12,005	9,856	10,659
Other %	64.3%	59.4%	50.9%	52.9%
Latino	6,335	7,715	8,858	8,737
Latino %	32.2%	38.2%	45.7%	43.3%
Asian	579	393	462	587
Asian %	2.9%	1.9%	2.4%	2.9%
Black	112	108	188	181
Black %	0.6%	0.5%	1.0%	0.9%

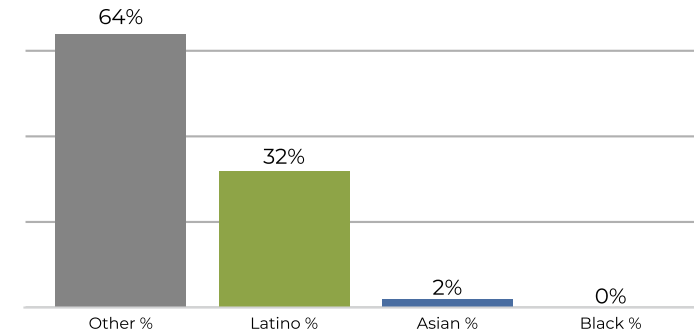
Citizen Voting Age Population (CVAP)

	1	2	3	4
Total CVAP	14,590	13,177	11,611	13,070
Other CVAP	10,181	9,922	7,989	8,872
Other CVAP %	69.8%	75.3%	68.8%	67.9%
Latino CVAP	3,847	2,730	3,350	3,469
Latino CVAP %	26.4%	20.7%	28.9%	26.5%
Asian CVAP	530	359	154	651
Asian CVAP %	3.6%	2.7%	1.3%	5.0%
Black CVAP	32	166	118	78
Black CVAP %	0.2%	1.3%	1.0%	0.6%

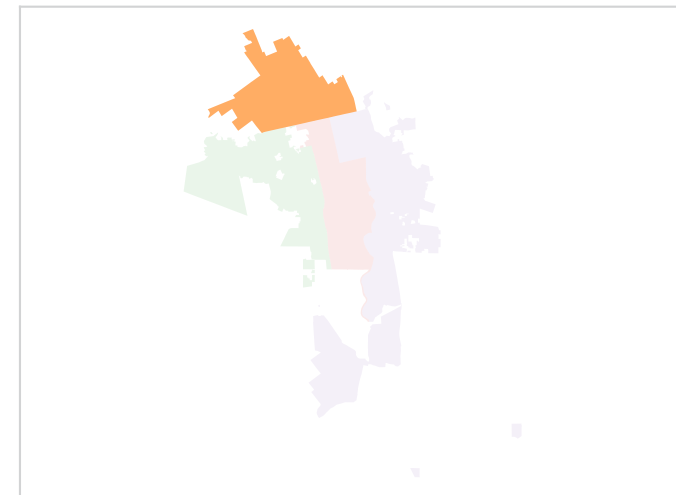
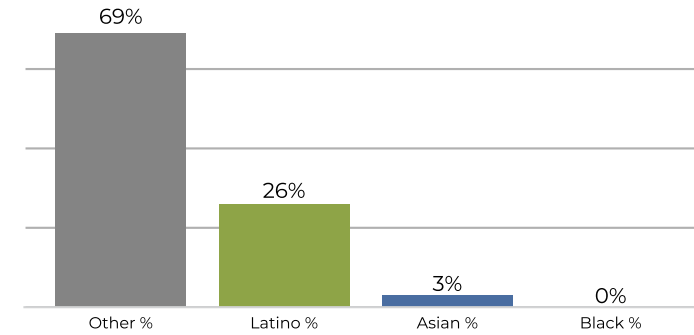
District 1



2020 Census

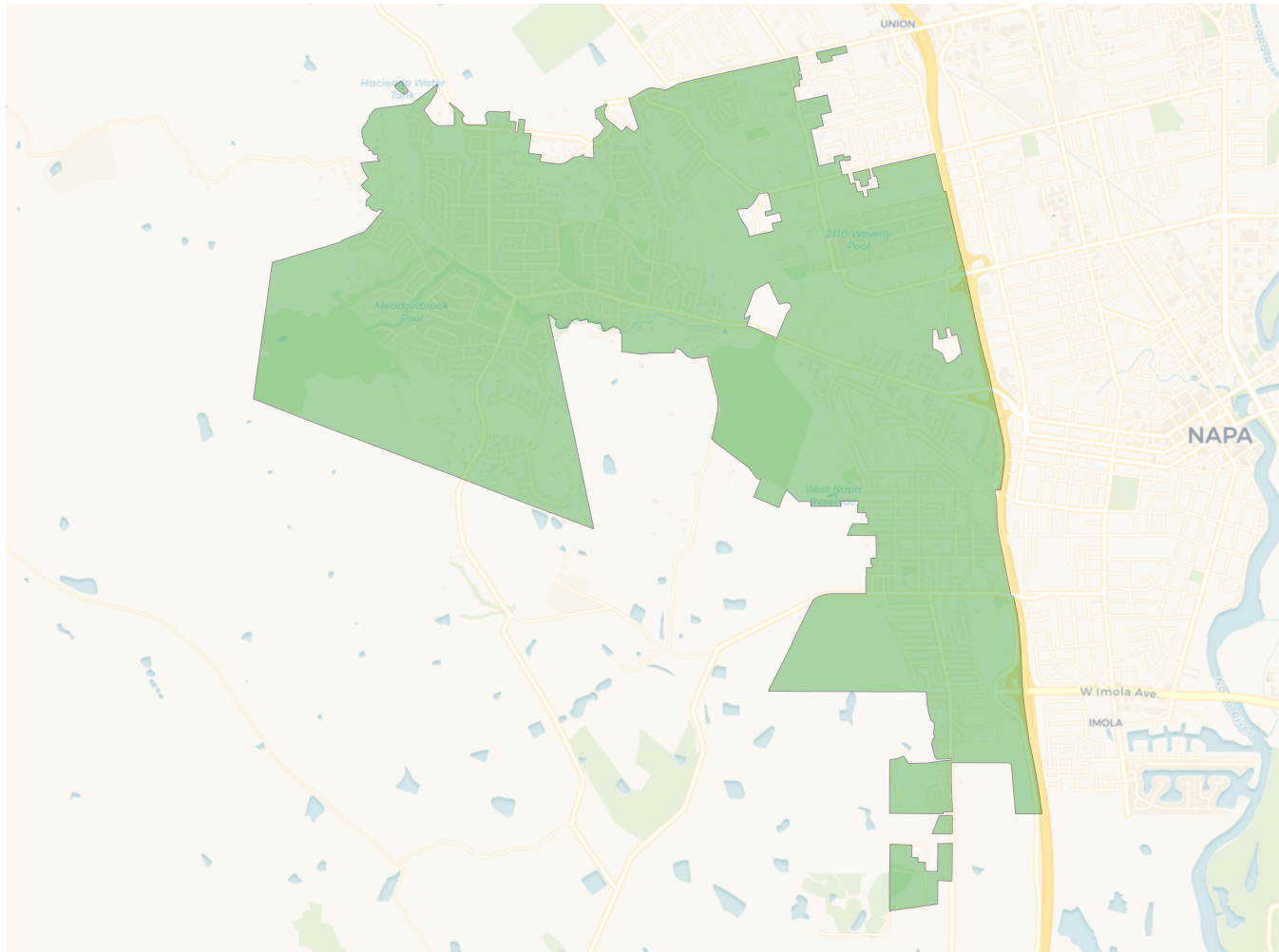


Citizen Voting Age Population

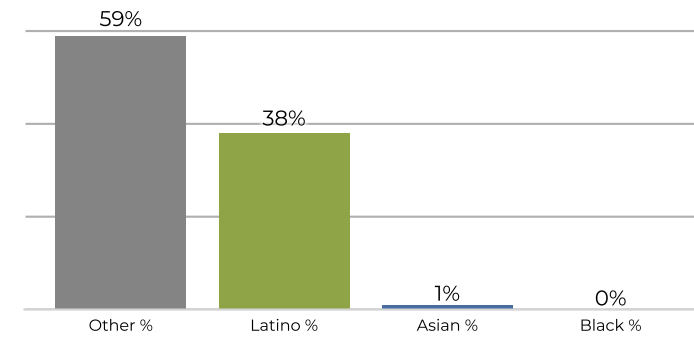


Population	Deviation	Deviation %	Other	Other %	Latino	Latino %	Asian	Asian %	Black	Black %
19,664	-189	-1.0%	12,638	64.3%	6,335	32.2%	579	2.9%	112	0.6%
Total CVAP	Other CVAP	Other CVAP %	Latino CVAP	Latino CVAP %	Asian CVAP	Asian CVAP %	Black CVAP	Black CVAP %		
14,590	10,181	69.8%	3,847	26.4%	530	3.6%	32	0.2%		

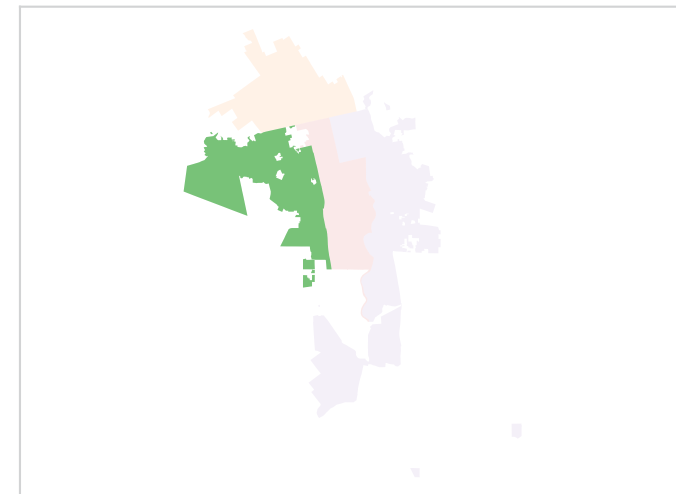
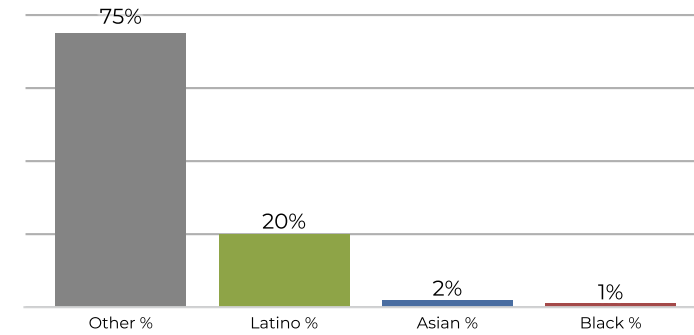
District 2



2020 Census

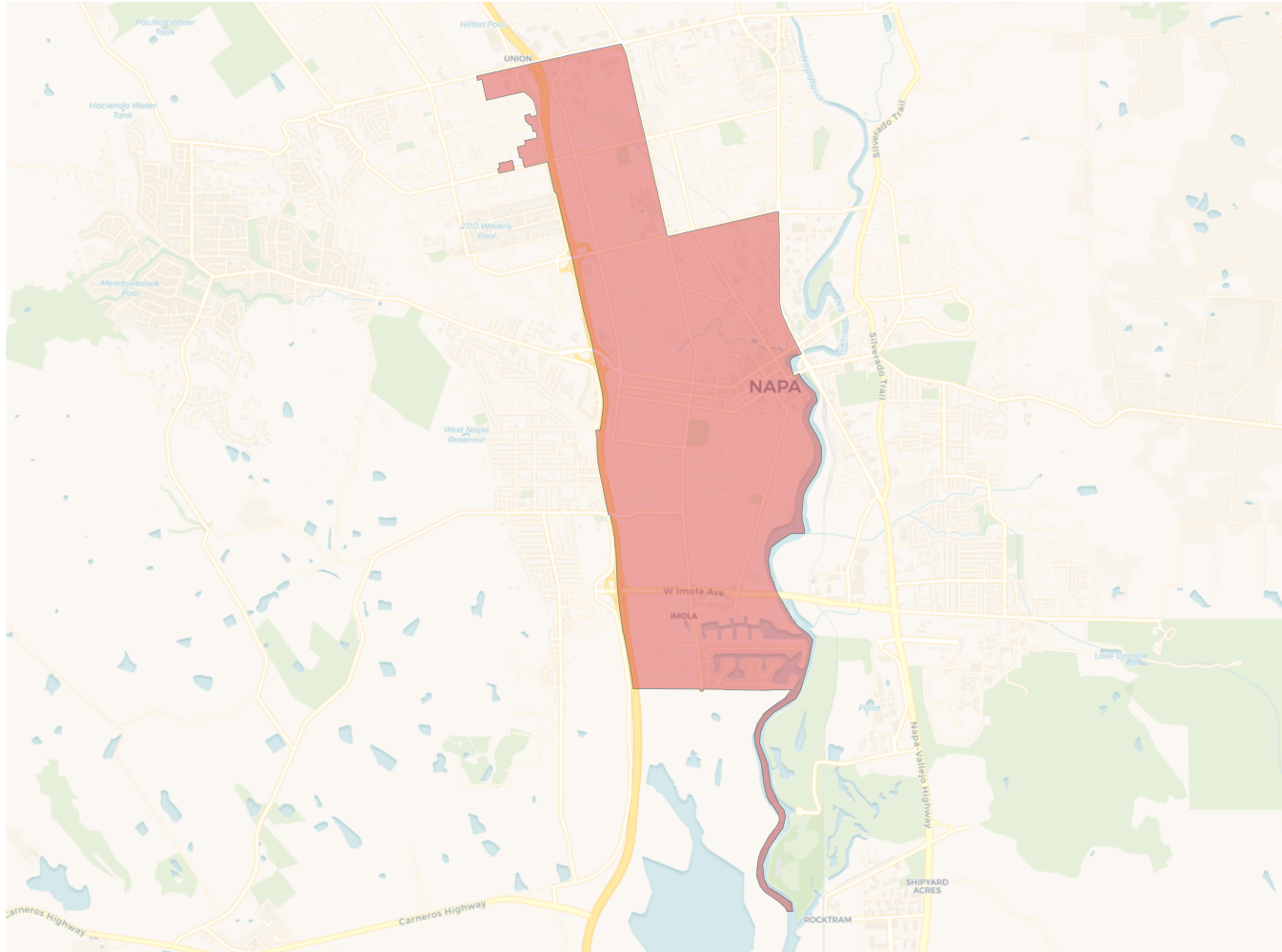


Citizen Voting Age Population

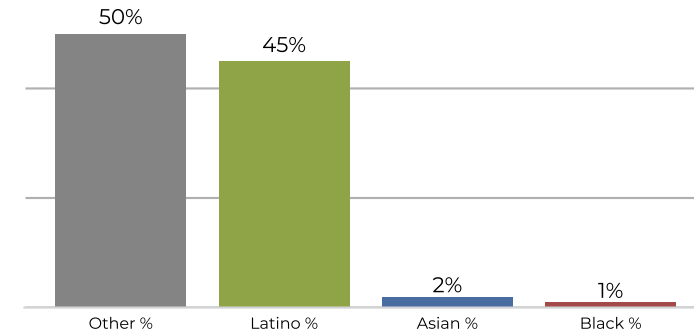


Population	Deviation	Deviation %	Other	Other %	Latino	Latino %	Asian	Asian %	Black	Black %
20,221	368	1.9%	12,005	59.4%	7,715	38.2%	393	1.9%	108	0.5%
Total CVAP	Other CVAP	Other CVAP %	Latino CVAP	Latino CVAP %	Asian CVAP	Asian CVAP %	Black CVAP	Black CVAP %		
13,177	9,922	75.3%	2,730	20.7%	359	2.7%	166	1.3%		

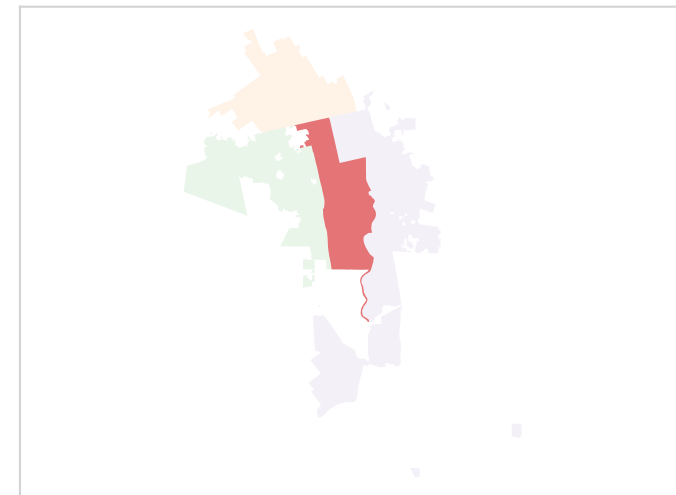
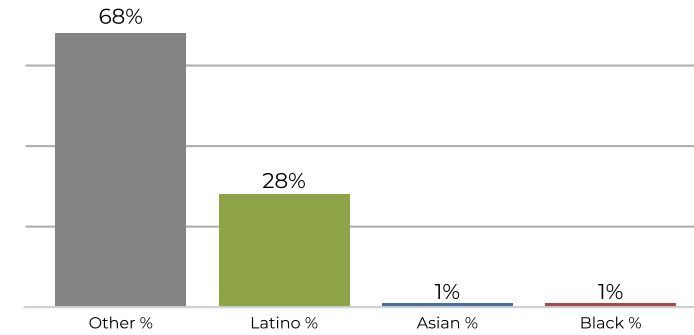
District 3



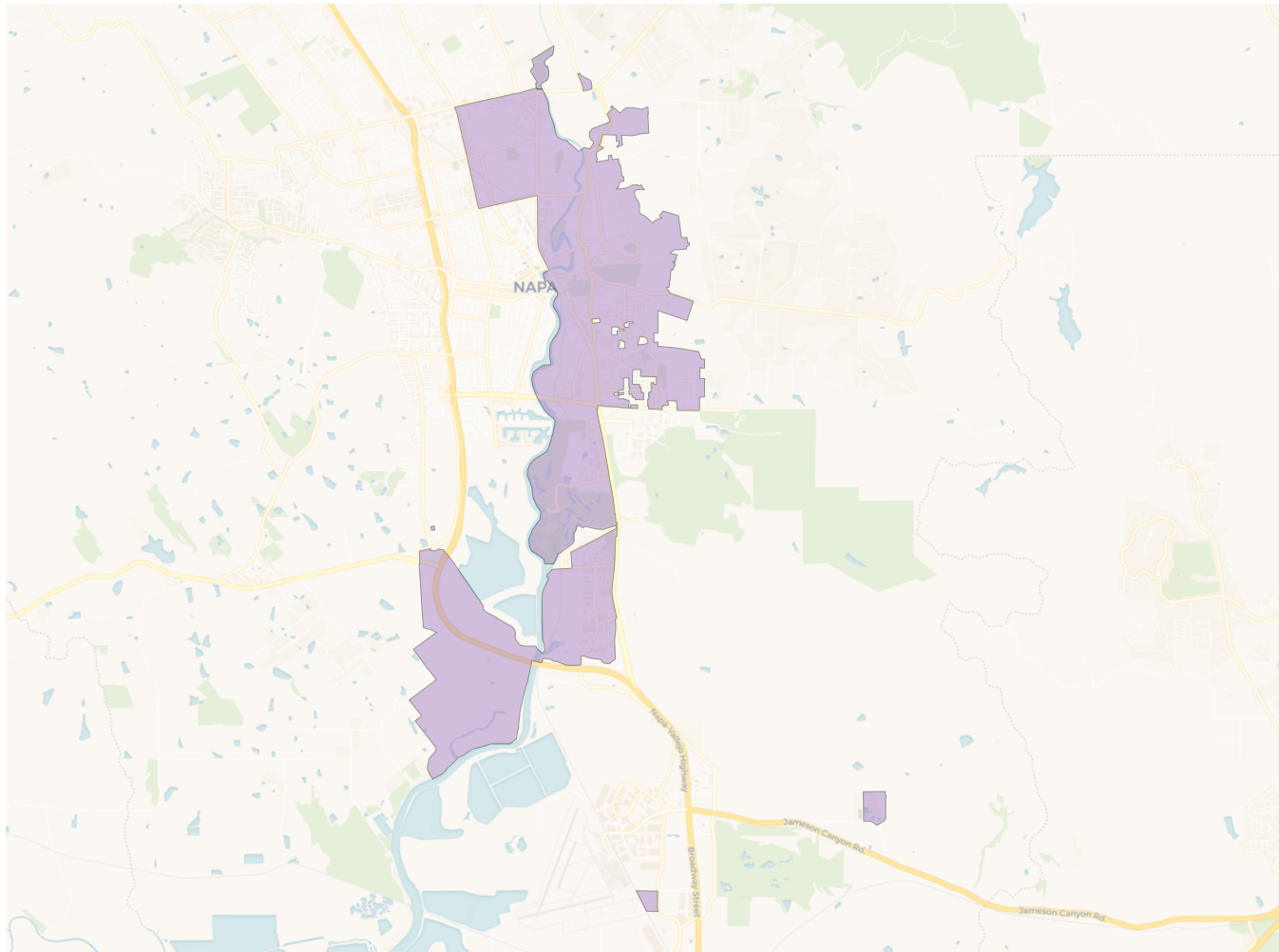
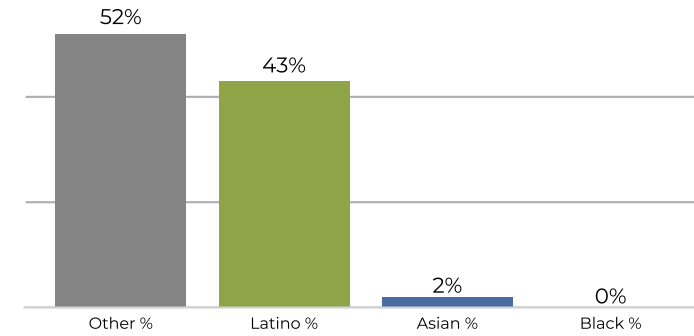
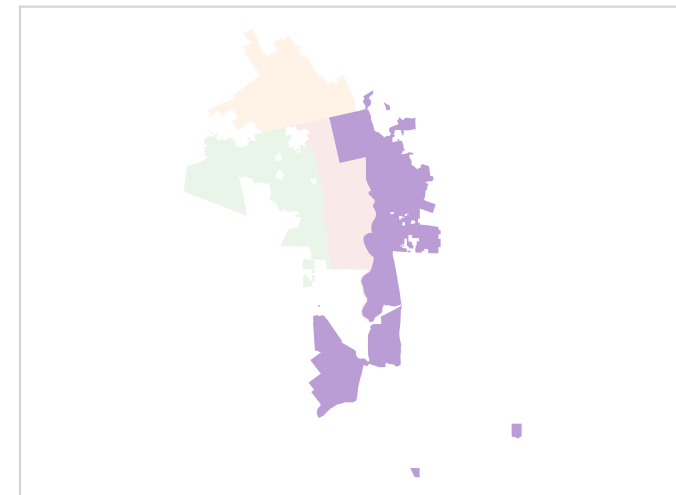
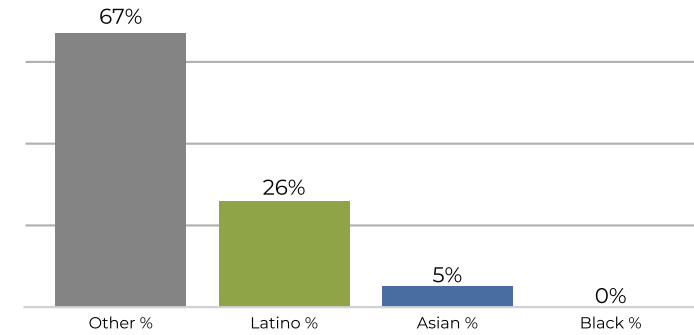
2020 Census



Citizen Voting Age Population



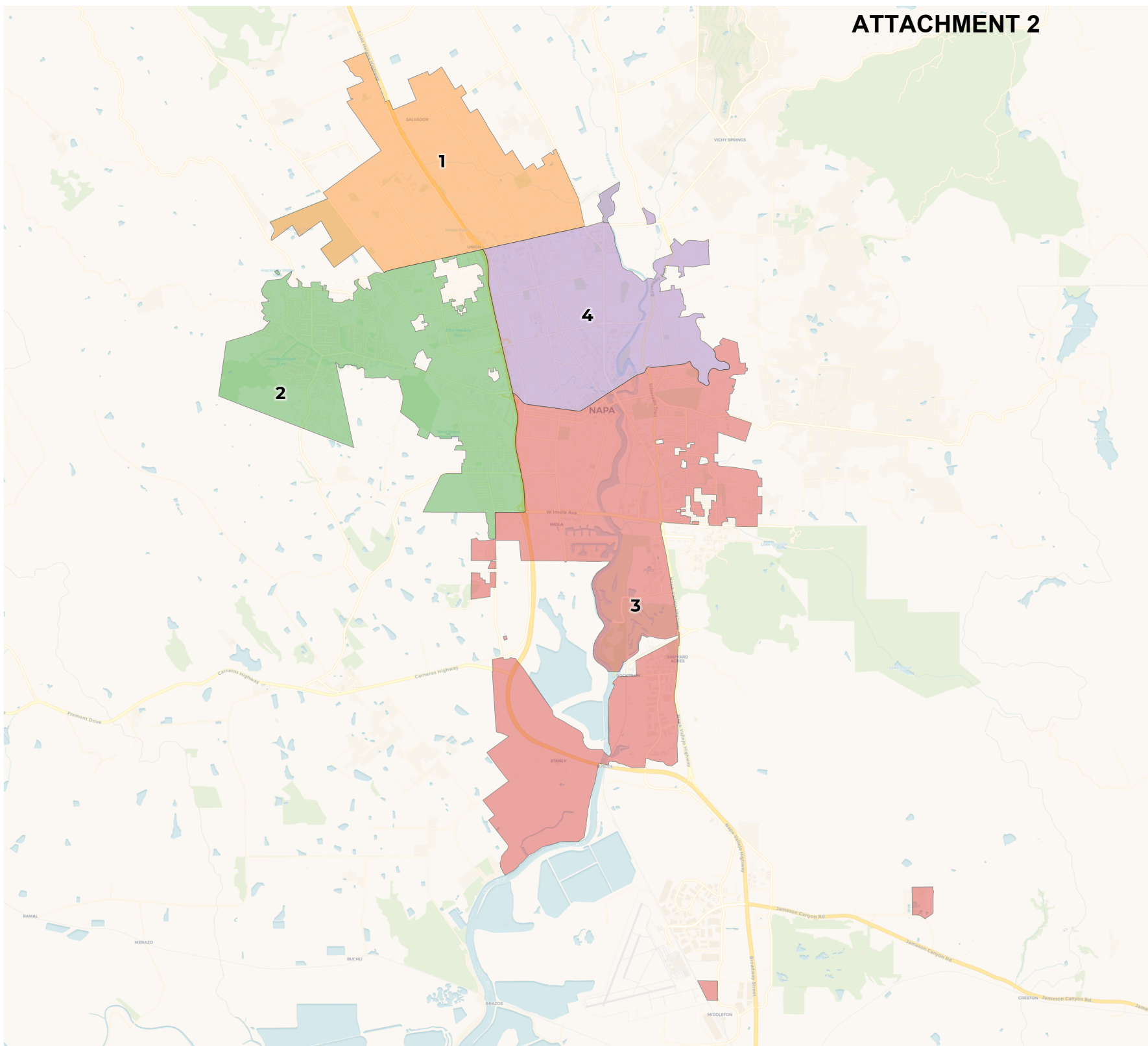
Population	Deviation	Deviation %	Other	Other %	Latino	Latino %	Asian	Asian %	Black	Black %
19,364	-489	-2.5%	9,856	50.9%	8,858	45.7%	462	2.4%	188	1.0%
Total CVAP	Other CVAP	Other CVAP %	Latino CVAP	Latino CVAP %	Asian CVAP	Asian CVAP %	Black CVAP	Black CVAP %		
11,611	7,989	68.8%	3,350	28.9%	154	1.3%	118	1.0%		

District 4

2020 Census

Citizen Voting Age Population


Population	Deviation	Deviation %	Other	Other %	Latino	Latino %	Asian	Asian %	Black	Black %
20,164	311	1.6%	10,659	52.9%	8,737	43.3%	587	2.9%	181	0.9%
Total CVAP	Other CVAP	Other CVAP %	Latino CVAP	Latino CVAP %	Asian CVAP	Asian CVAP %	Black CVAP	Black CVAP %		
13,070	8,872	67.9%	3,469	26.5%	651	5.0%	78	0.6%		

**REDISTRICTING
PARTNERS**

City of Napa
DistrictR ID 101095



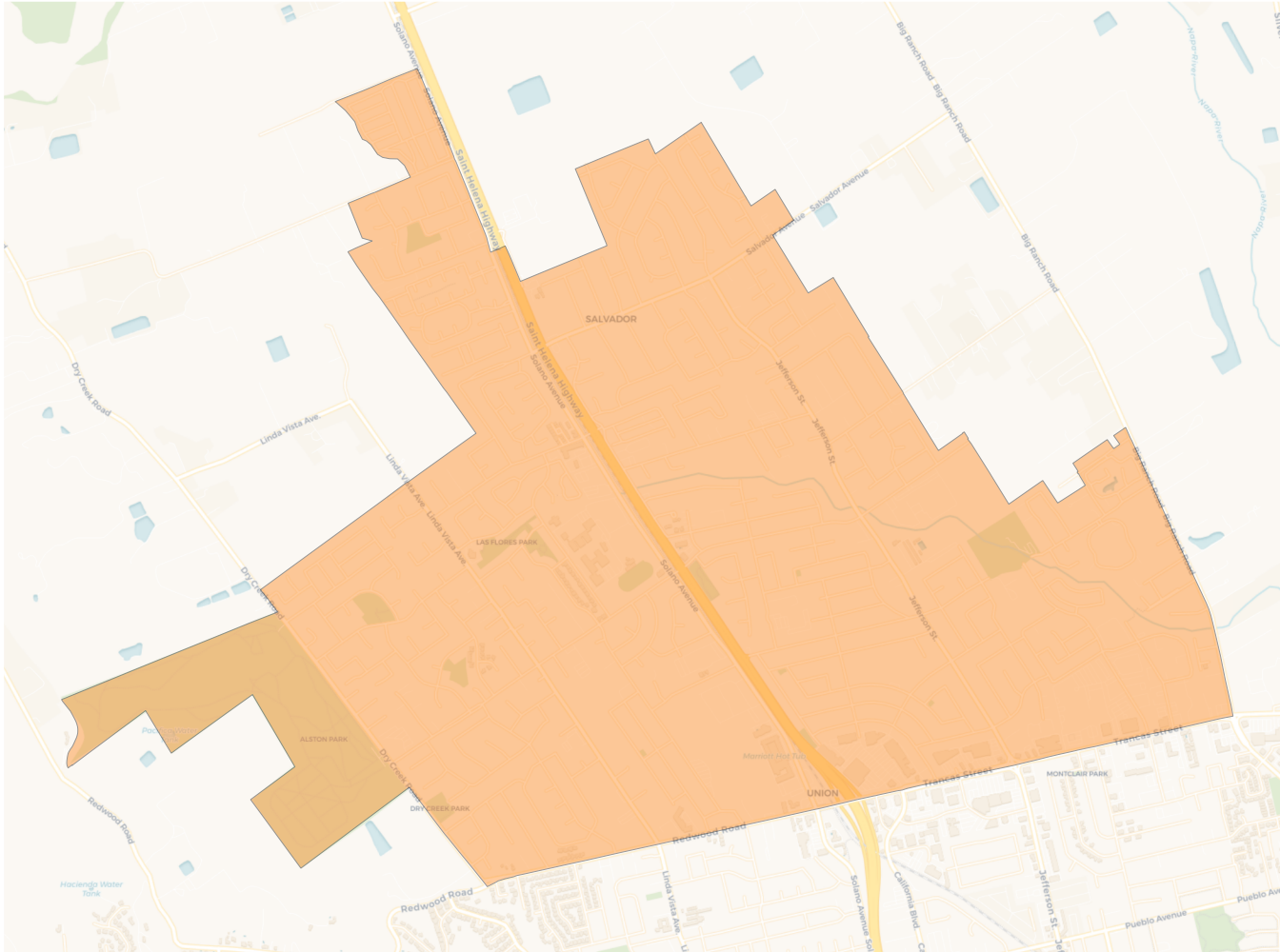
2020 Census

	1	2	3	4
Population	19,664	19,696	19,862	20,191
Deviation	-189	-157	9	338
Deviation %	-1.0%	-0.8%	0.0%	1.7%
Other	12,638	11,570	10,920	10,030
Other %	64.3%	58.7%	55.0%	49.7%
Latino	6,335	7,642	8,188	9,480
Latino %	32.2%	38.8%	41.2%	47.0%
Asian	579	388	552	502
Asian %	2.9%	2.0%	2.8%	2.5%
Black	112	96	202	179
Black %	0.6%	0.5%	1.0%	0.9%

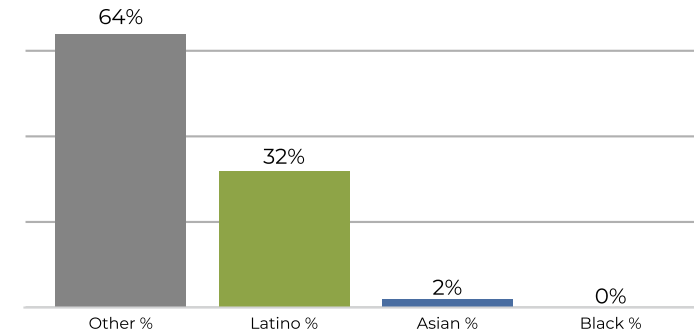
Citizen Voting Age Population (CVAP)

	1	2	3	4
Total CVAP	14,590	12,703	13,385	11,770
Other CVAP	10,181	9,544	9,273	7,966
Other CVAP %	69.8%	75.1%	69.3%	67.7%
Latino CVAP	3,847	2,679	3,524	3,346
Latino CVAP %	26.4%	21.1%	26.3%	28.4%
Asian CVAP	530	314	449	401
Asian CVAP %	3.6%	2.5%	3.4%	3.4%
Black CVAP	32	166	139	57
Black CVAP %	0.2%	1.3%	1.0%	0.5%

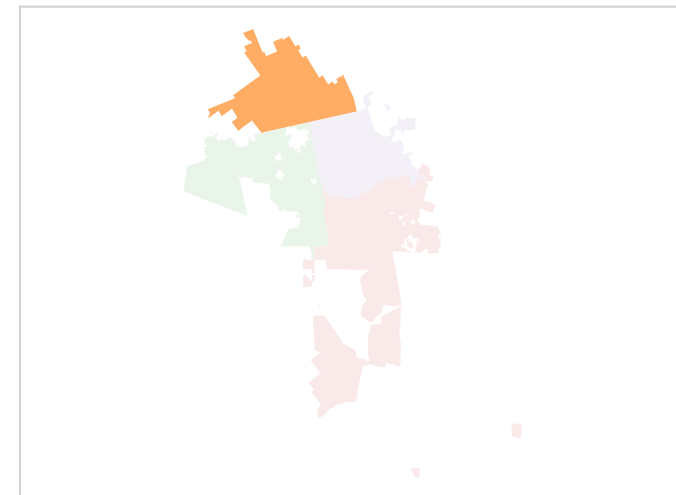
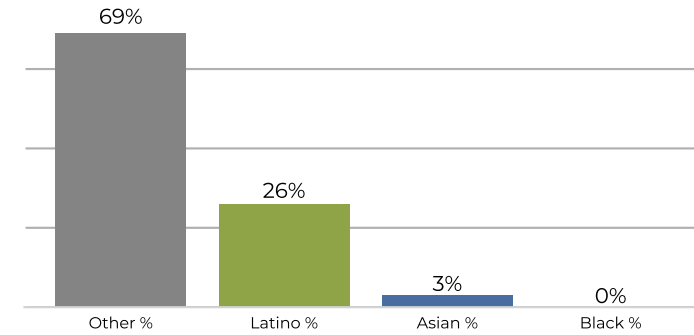
District 1



2020 Census

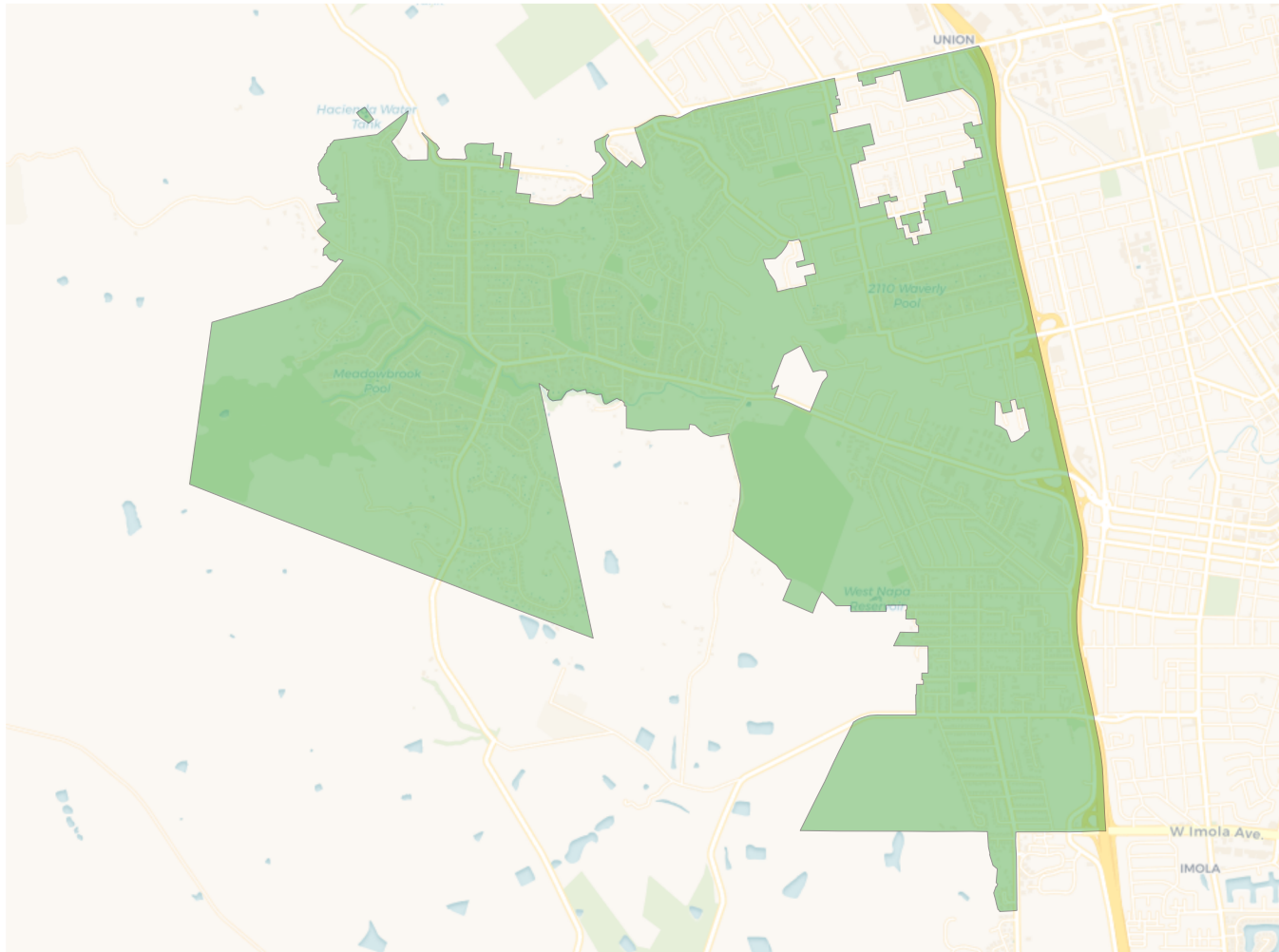


Citizen Voting Age Population

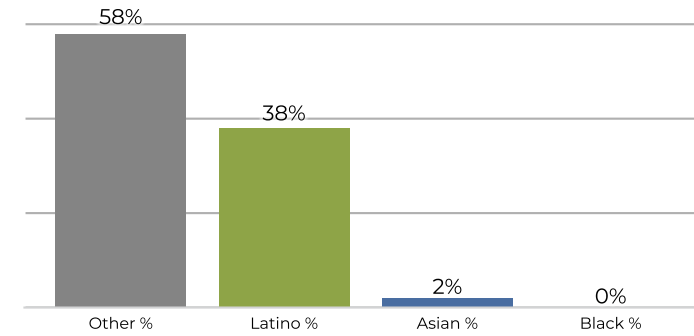


Population	Deviation	Deviation %	Other	Other %	Latino	Latino %	Asian	Asian %	Black	Black %
19,664	-189	-1.0%	12,638	64.3%	6,335	32.2%	579	2.9%	112	0.6%
Total CVAP	Other CVAP	Other CVAP %	Latino CVAP	Latino CVAP %	Asian CVAP	Asian CVAP %	Black CVAP	Black CVAP %		
14,590	10,181	69.8%	3,847	26.4%	530	3.6%	32	0.2%		

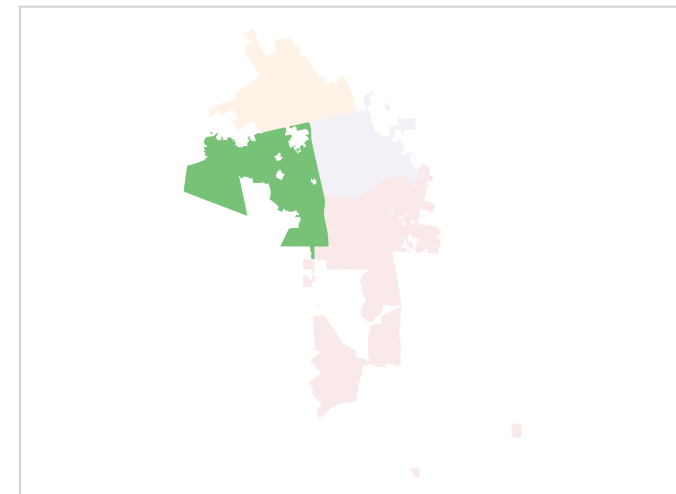
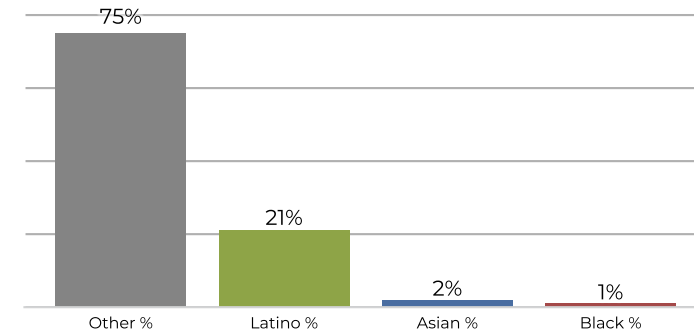
District 2



2020 Census

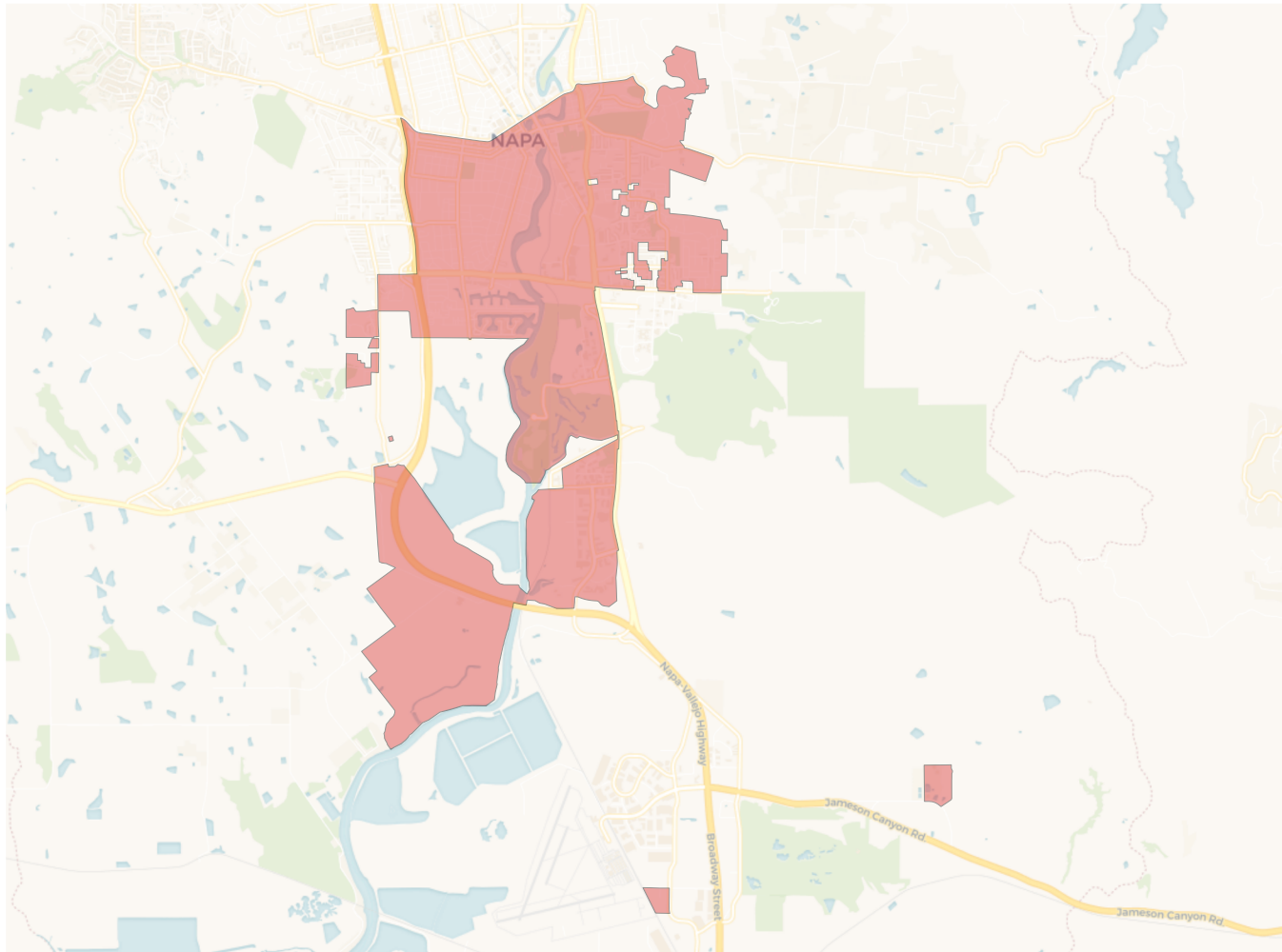


Citizen Voting Age Population

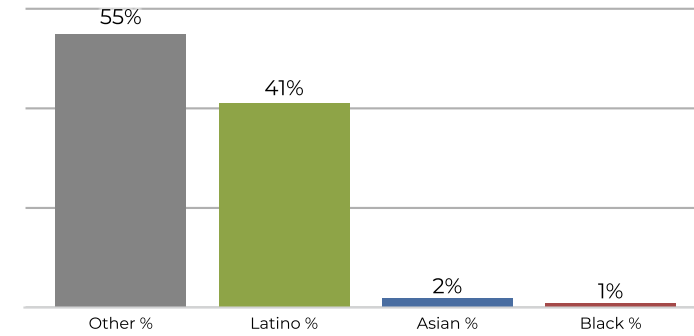


Population	Deviation	Deviation %	Other	Other %	Latino	Latino %	Asian	Asian %	Black	Black %
19,696	-157	-0.8%	11,570	58.7%	7,642	38.8%	388	2.0%	96	0.5%
Total CVAP	Other CVAP	Other CVAP %	Latino CVAP	Latino CVAP %	Asian CVAP	Asian CVAP %	Black CVAP	Black CVAP %		
12,703	9,544	75.1%	2,679	21.1%	314	2.5%	166	1.3%		

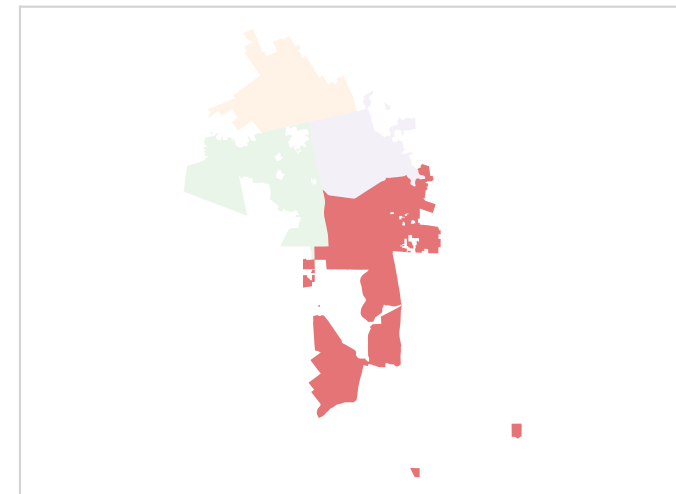
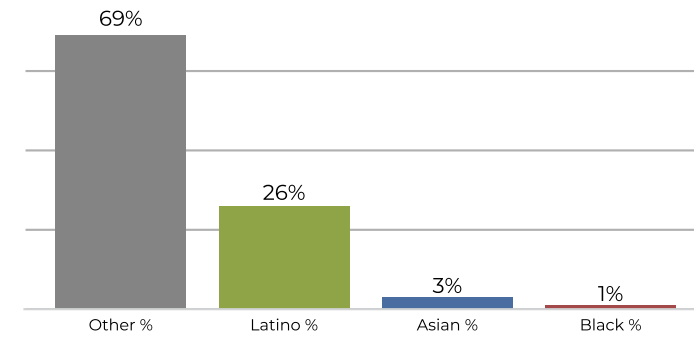
District 3



2020 Census

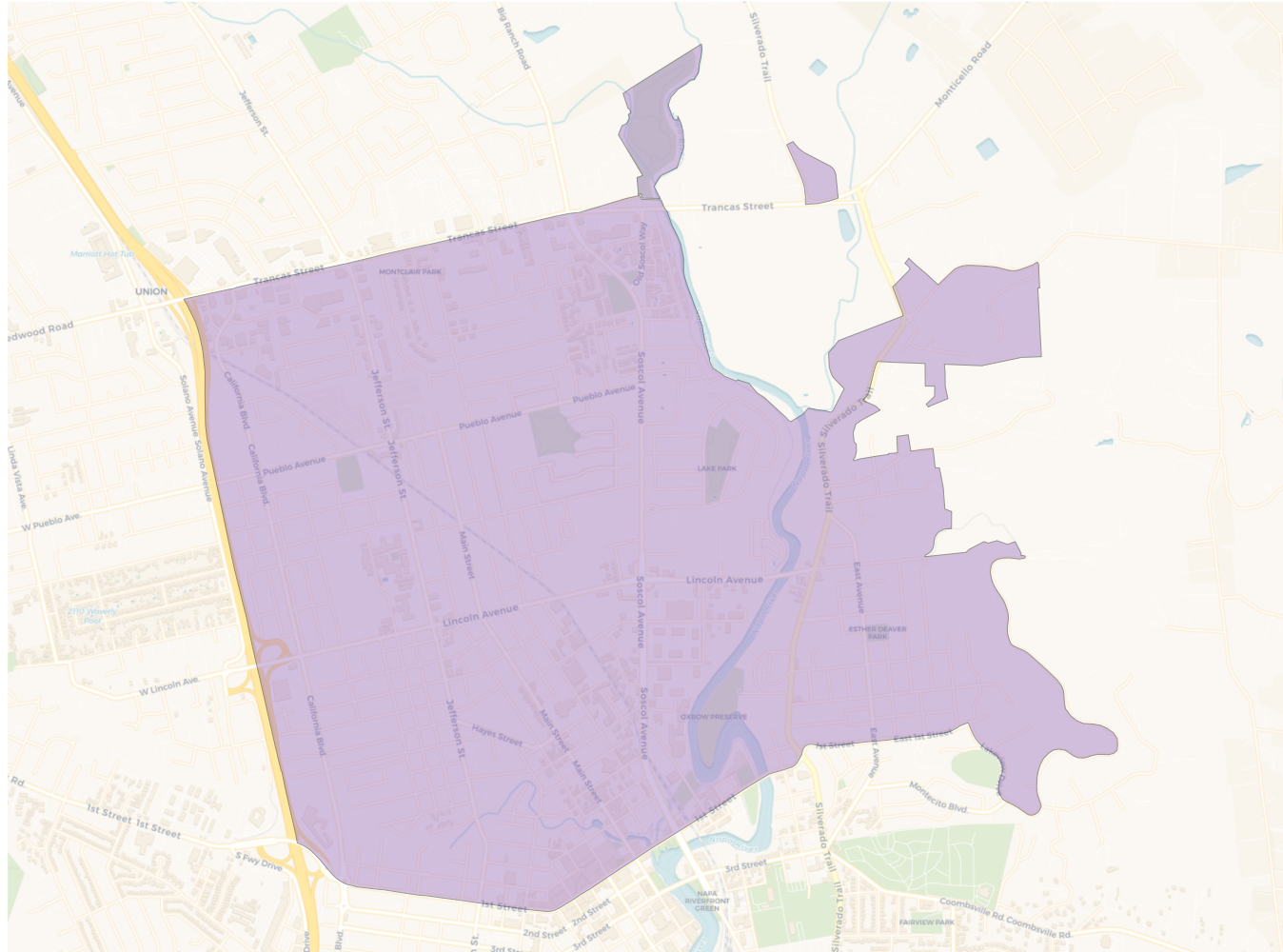


Citizen Voting Age Population

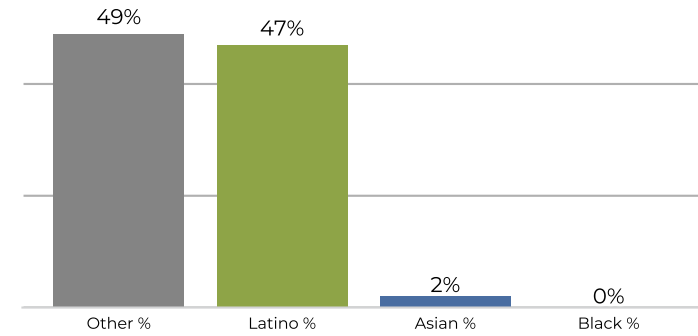


Population	Deviation	Deviation %	Other	Other %	Latino	Latino %	Asian	Asian %	Black	Black %
19,862	9	0.0%	10,920	55.0%	8,188	41.2%	552	2.8%	202	1.0%
Total CVAP	Other CVAP	Other CVAP %	Latino CVAP	Latino CVAP %	Asian CVAP	Asian CVAP %	Black CVAP	Black CVAP %		
13,385	9,273	69.3%	3,524	26.3%	449	3.4%	139	1.0%		

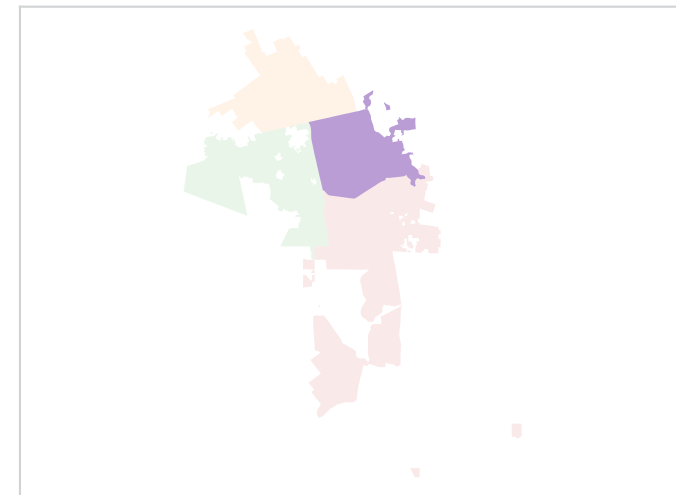
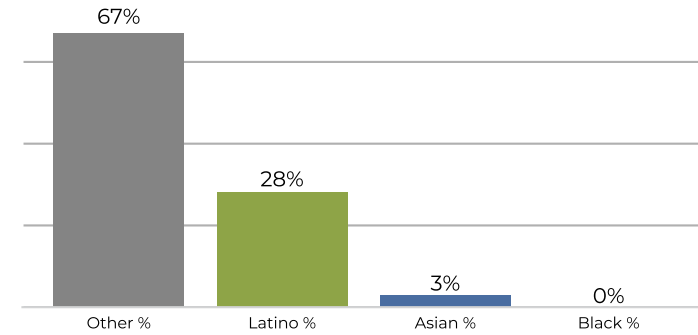
District 4



2020 Census



Citizen Voting Age Population



Population	Deviation	Deviation %	Other	Other %	Latino	Latino %	Asian	Asian %	Black	Black %
20,191	338	1.7%	10,030	49.7%	9,480	47.0%	502	2.5%	179	0.9%
Total CVAP	Other CVAP	Other CVAP %	Latino CVAP	Latino CVAP %	Asian CVAP	Asian CVAP %	Black CVAP	Black CVAP %		
11,770	7,966	67.7%	3,346	28.4%	401	3.4%	57	0.5%		