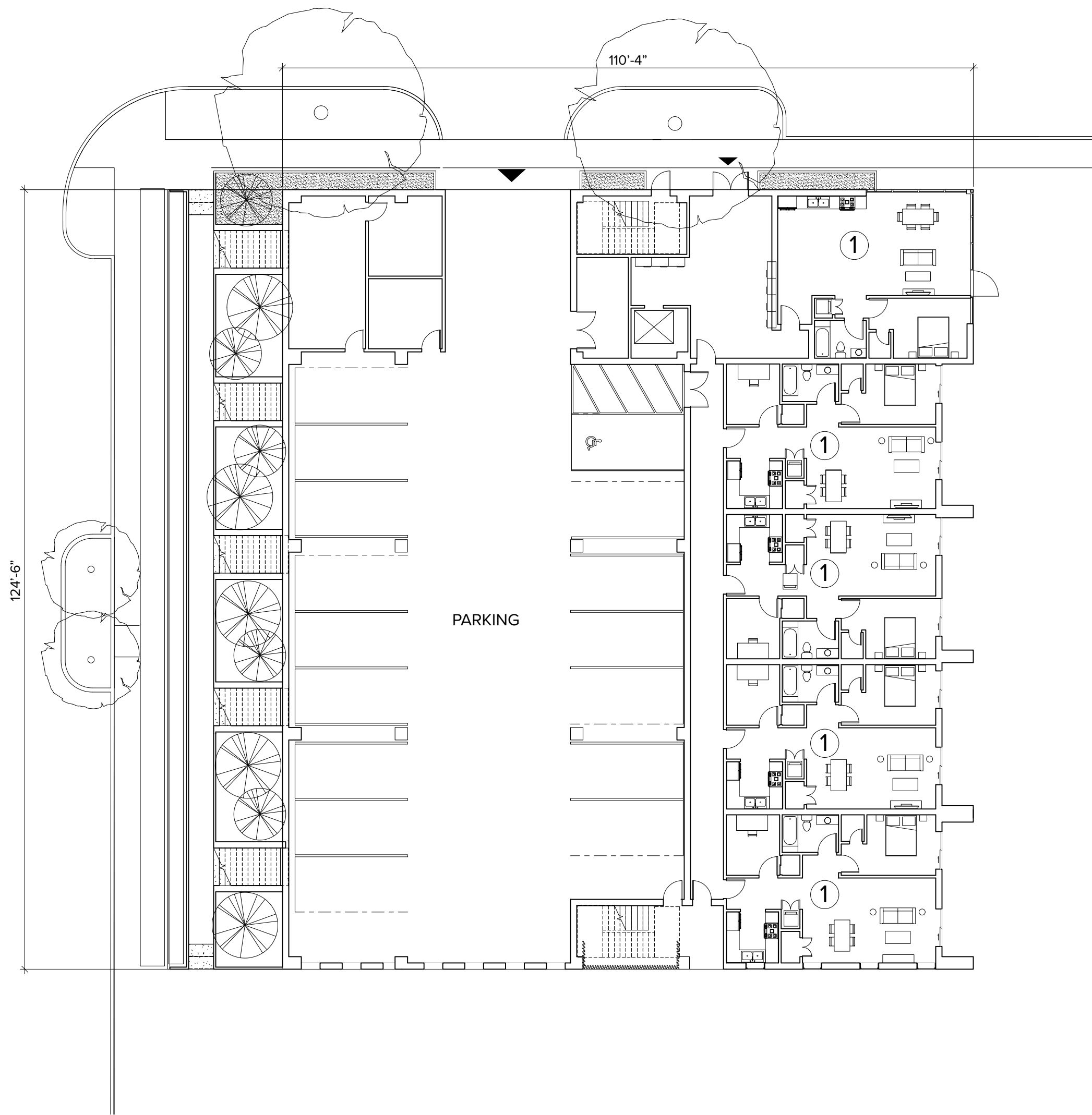


ROOM KEY

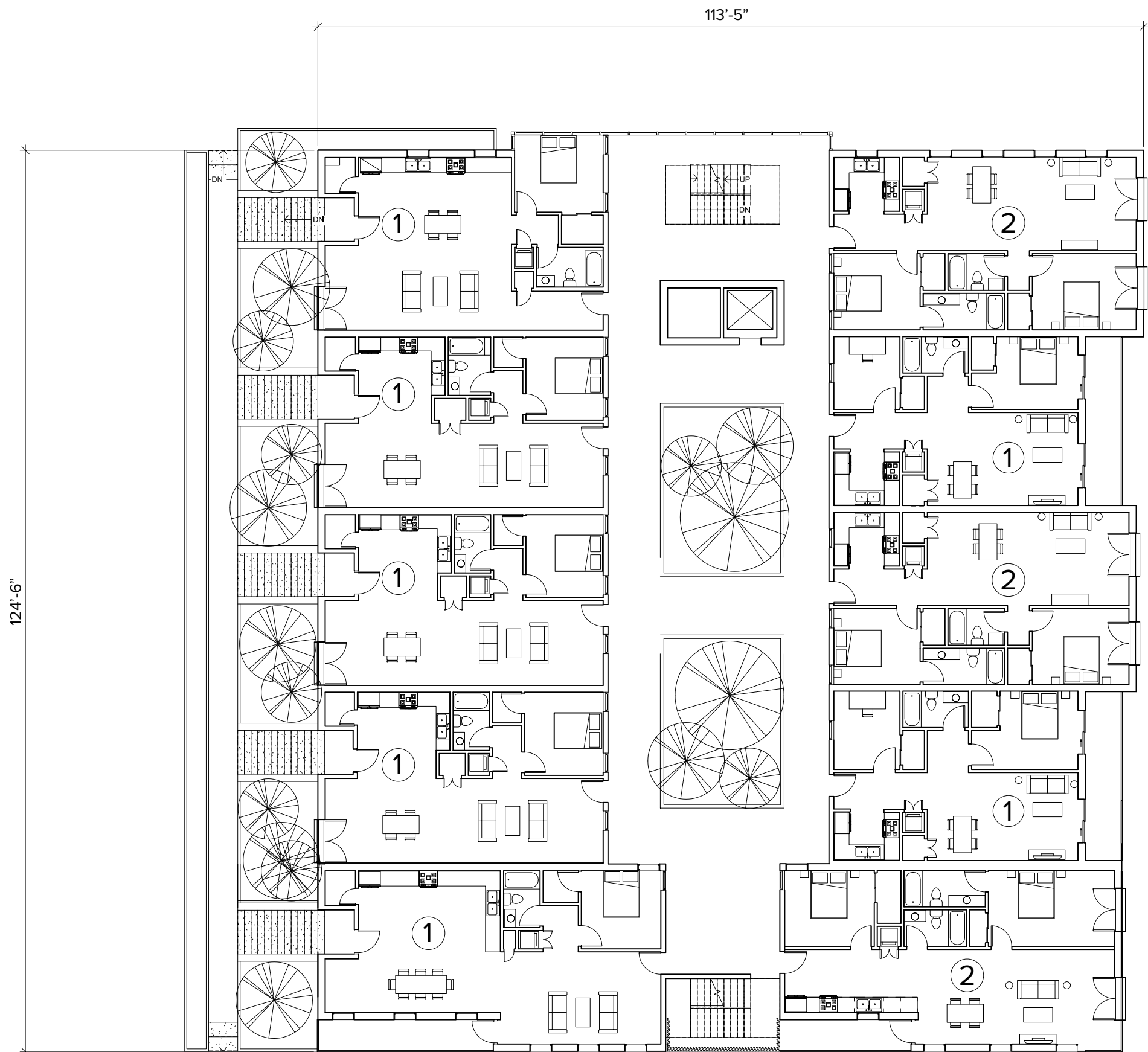
- 1

SINGLE BEDROOM UNIT
- 2

TWO BEDROOM UNIT



LEVEL 1



LEVEL 2

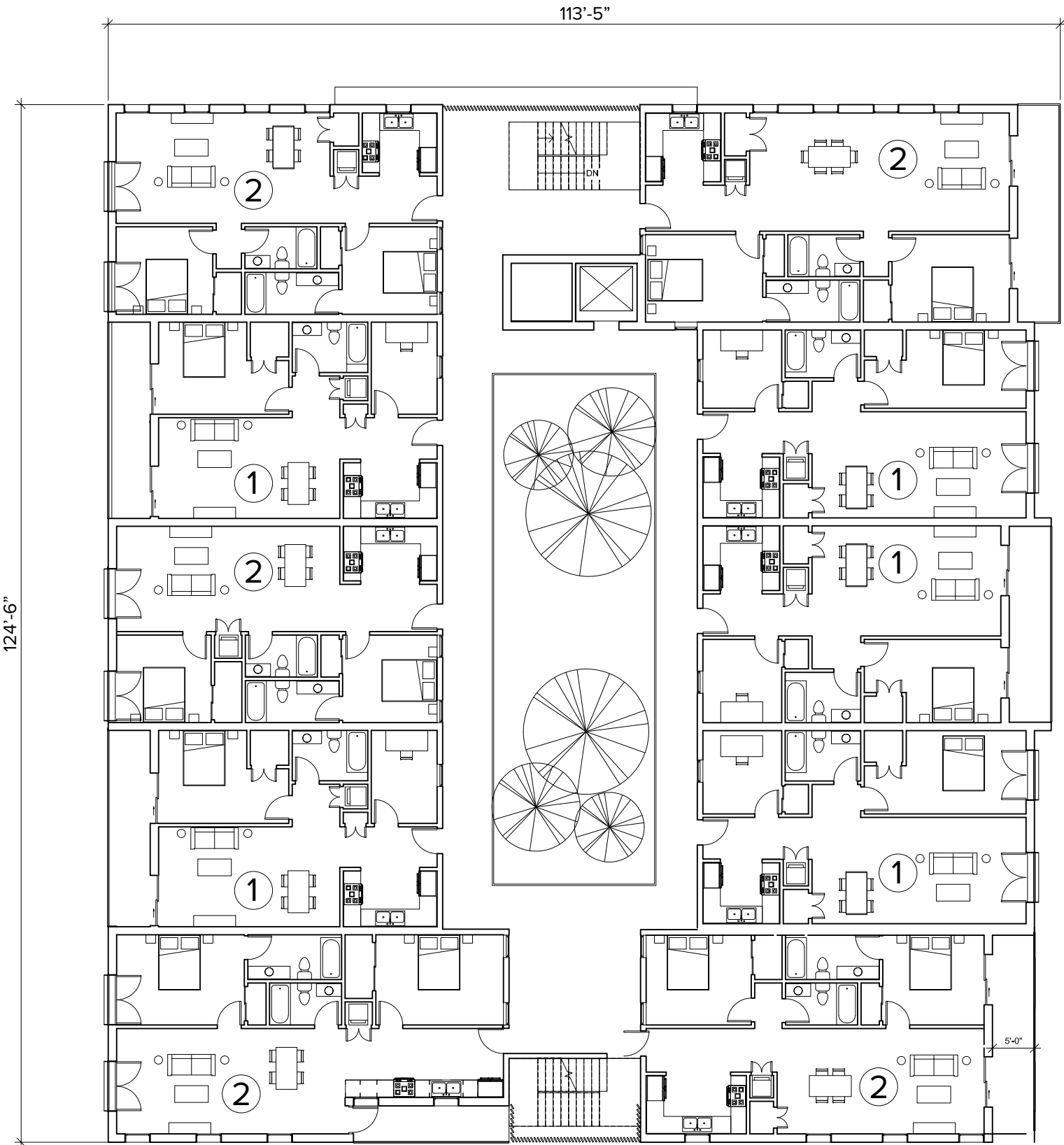
Redwood Building A: Plans

ROOM KEY

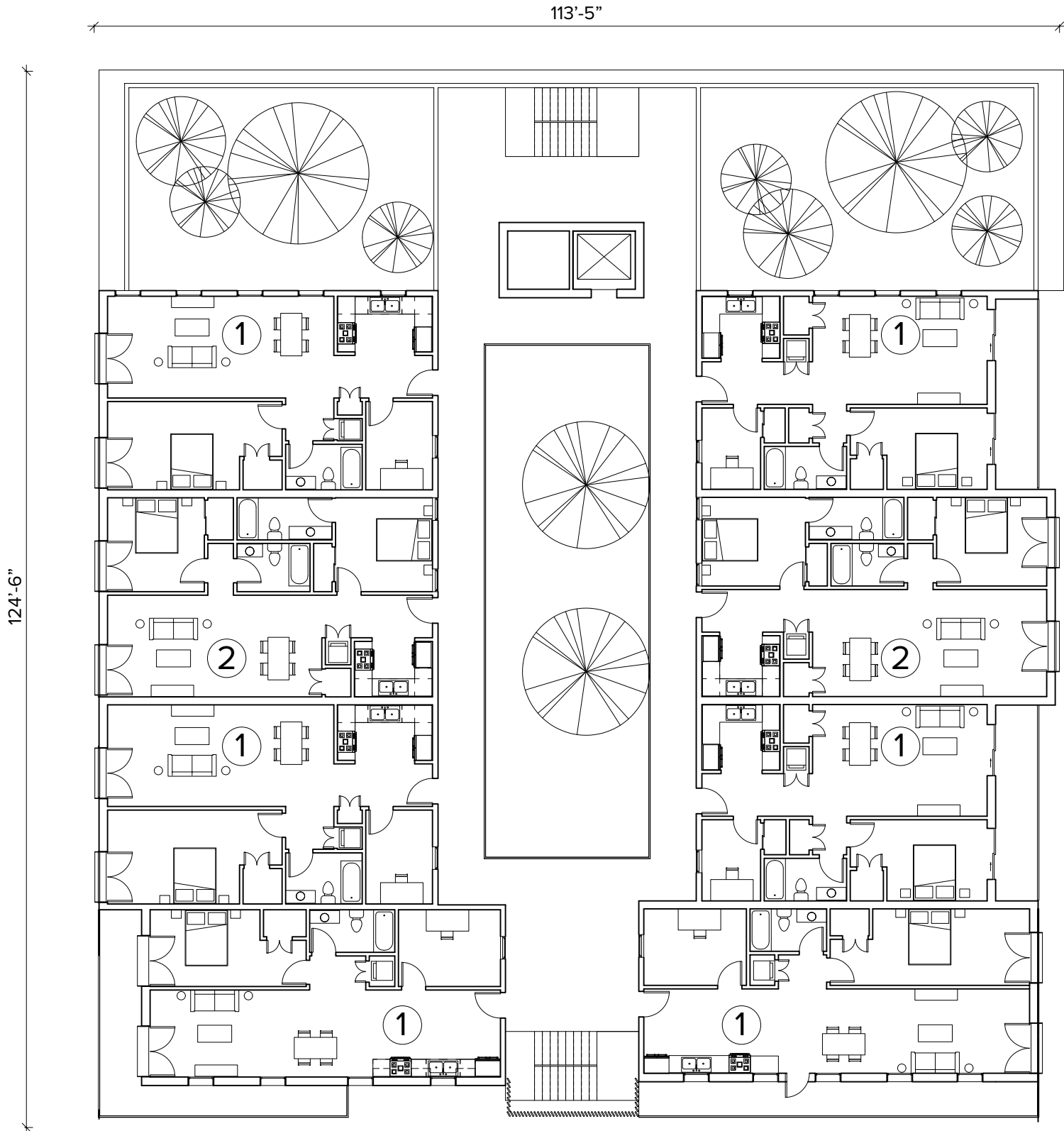
- 1

SINGLE BEDROOM UNIT
- 2

TWO BEDROOM UNIT

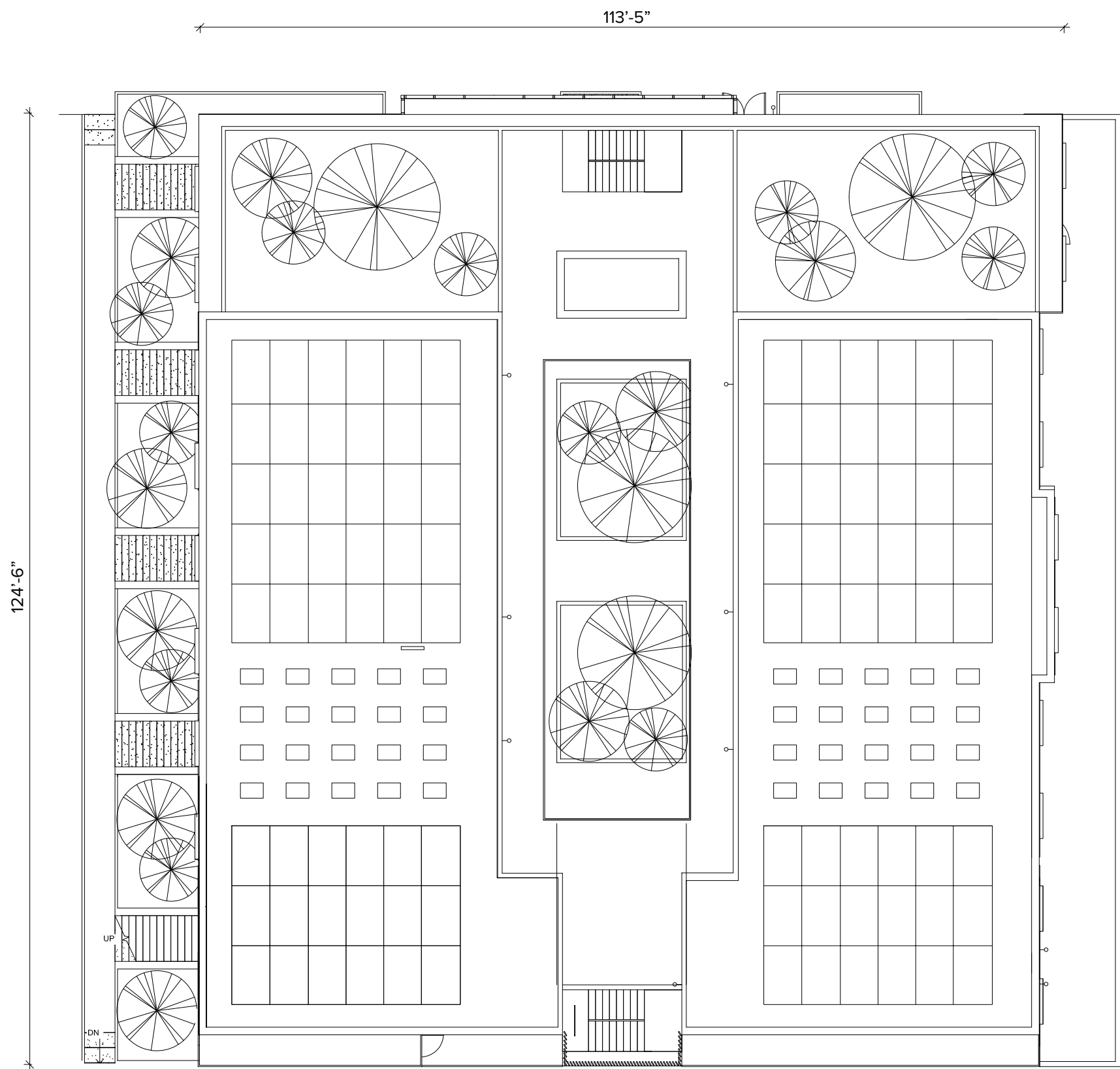


LEVEL 3



LEVEL 4

Redwood Building A: Plans



ROOF PLAN

# Redwood Building A: Roof Plan

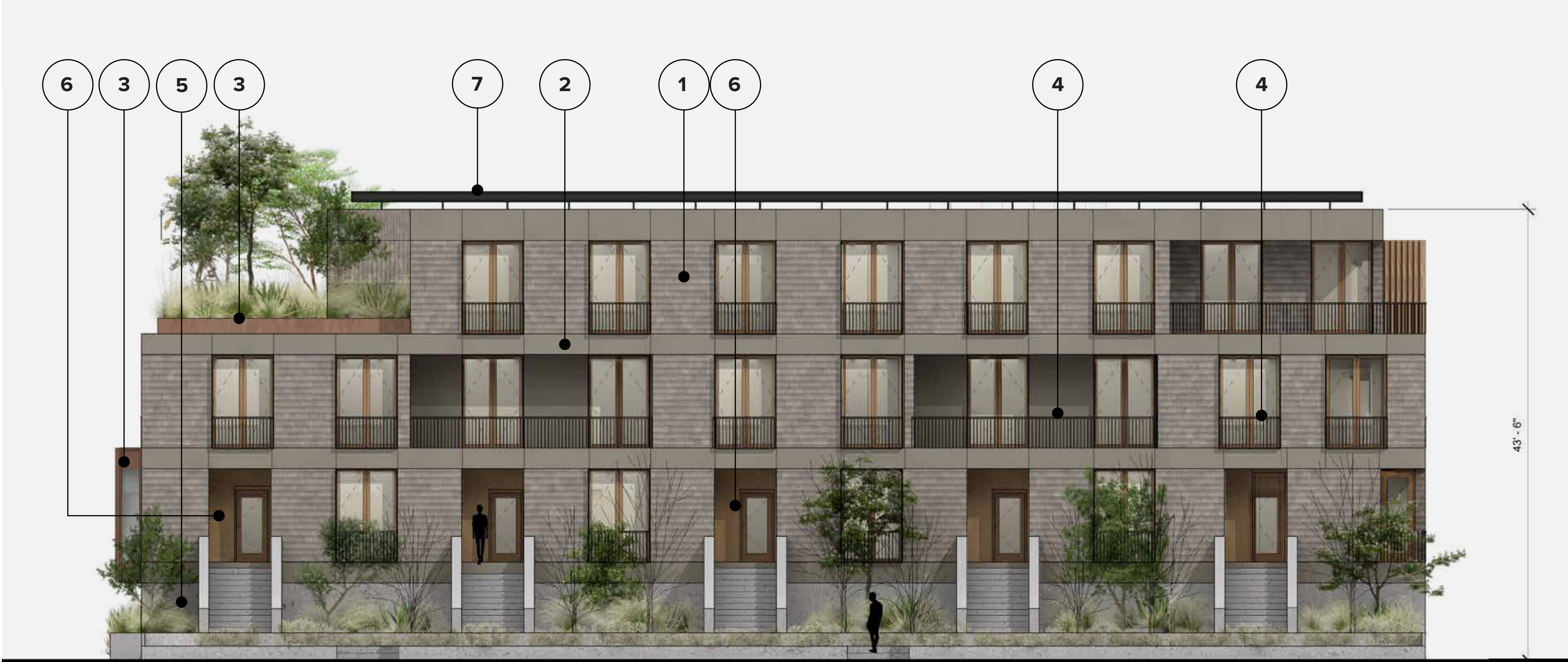


MATERIALS

- 1 CEMENT BOARD SHINGLE, PAINTED
- 2 CEMENT BOARD
- 3 FINISH STEEL
- 4 ANODIZED ALUMINUM, BLACK
- 5 SMOOTH STUCCO, INTEGRAL COLOR
- 6 WOOD SIDING
- 7 PAINTED METAL SOLAR PANEL TRELLIS



SOUTH ELEVATION



WEST ELEVATION

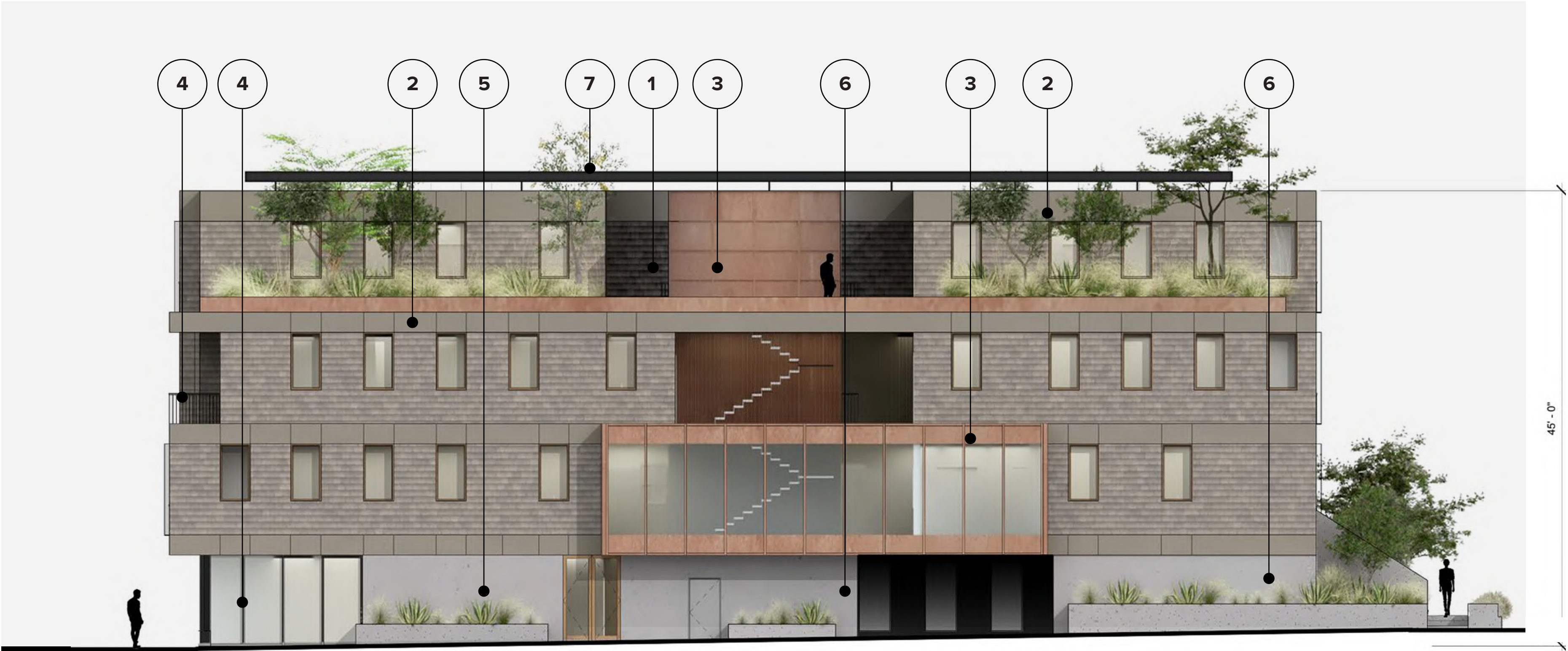


Redwood Building A: Rendered Elevations



MATERIALS

- 1 CEMENT BOARD SHINGLE, PAINTED
- 2 CEMENT BOARD
- 3 FINISH STEEL
- 4 ANODIZED ALUMINUM, BLACK
- 5 SMOOTH STUCCO, INTEGRAL COLOR
- 6 WOOD SIDING
- 7 PAINTED METAL SOLAR PANEL TRELLIS



NORTH ELEVATION



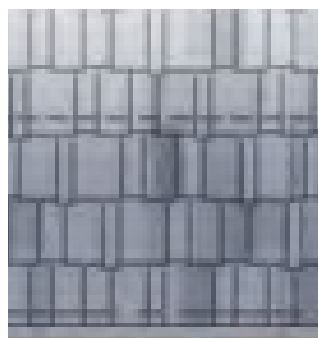
EAST ELEVATION



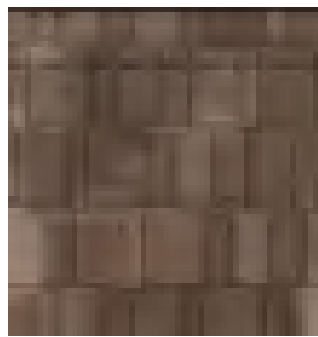
Redwood Building A: Rendered Elevations



ASPHALT SHINGLE ROOFING



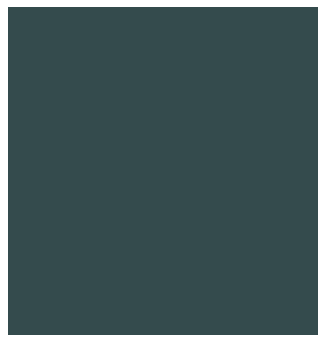
FIBER CEMENT SHINGLE SIDING



CEMENT PLASTER WALLS



PAINTED WOOD TRIM, TRELLISES,  
COLUMNS,RAFTERS



PAINTED ALUMINUM CLAD WOOD  
WINDOWS AND DOORS

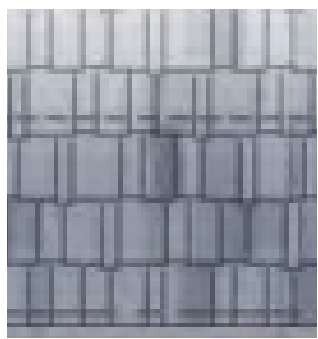


TINTED CAST-IN-PLACE CONCRETE  
PAVING

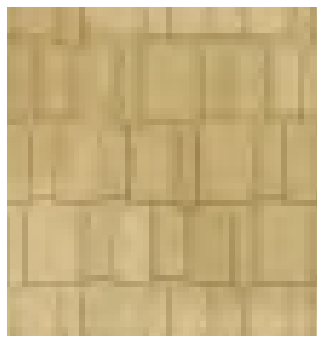


COURTYARD B1 & B4

ASPHALT SHINGLE ROOFING



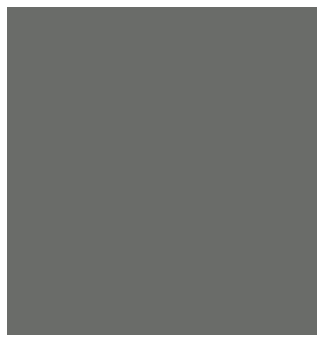
FIBER CEMENT SHINGLE SIDING



CEMENT PLASTER WALLS



PAINTED WOOD TRIM, TRELLISES,  
COLUMNS,RAFTERS



PAINTED ALUMINUM CLAD WOOD  
WINDOWS AND DOORS

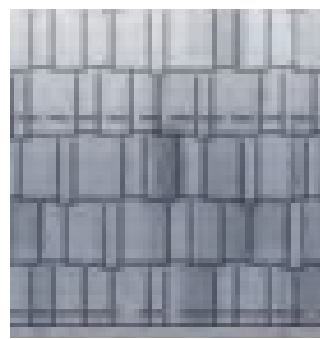


TINTED CAST-IN-PLACE CONCRETE  
PAVING

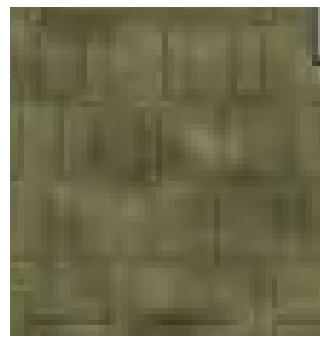


COURTYARD B2

ASPHALT SHINGLE ROOFING



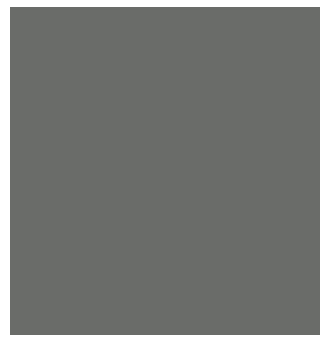
FIBER CEMENT SHINGLE SIDING



CEMENT PLASTER WALLS



PAINTED WOOD TRIM, TRELLISES,  
COLUMNS,RAFTERS



PAINTED ALUMINUM CLAD WOOD  
WINDOWS AND DOORS

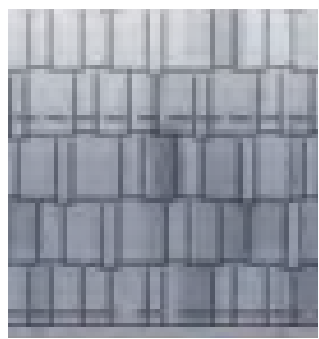


TINTED CAST-IN-PLACE CONCRETE  
PAVING

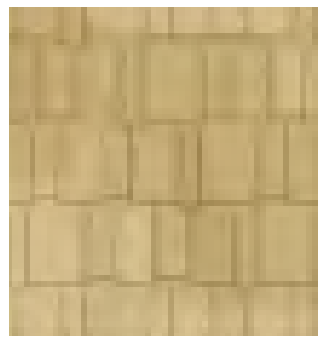


COURTYARD B3

ASPHALT SHINGLE ROOFING



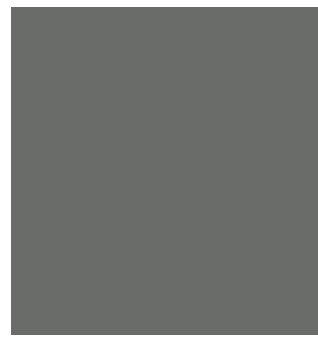
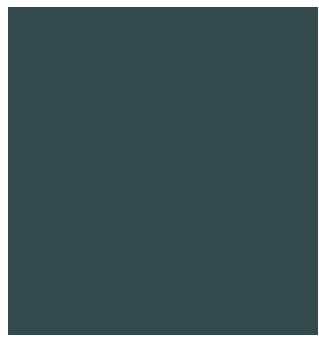
FIBER CEMENT SHINGLE SIDING



CEMENT PLASTER WALLS



PAINTED WOOD TRIM, TRELLISES,  
COLUMNS,RAFTERS



PAINTED ALUMINUM CLAD WOOD  
WINDOWS AND DOORS



TINTED CAST-IN-PLACE CONCRETE  
PAVING



SINGLE FAMILY E1-E8

# MATERIALS