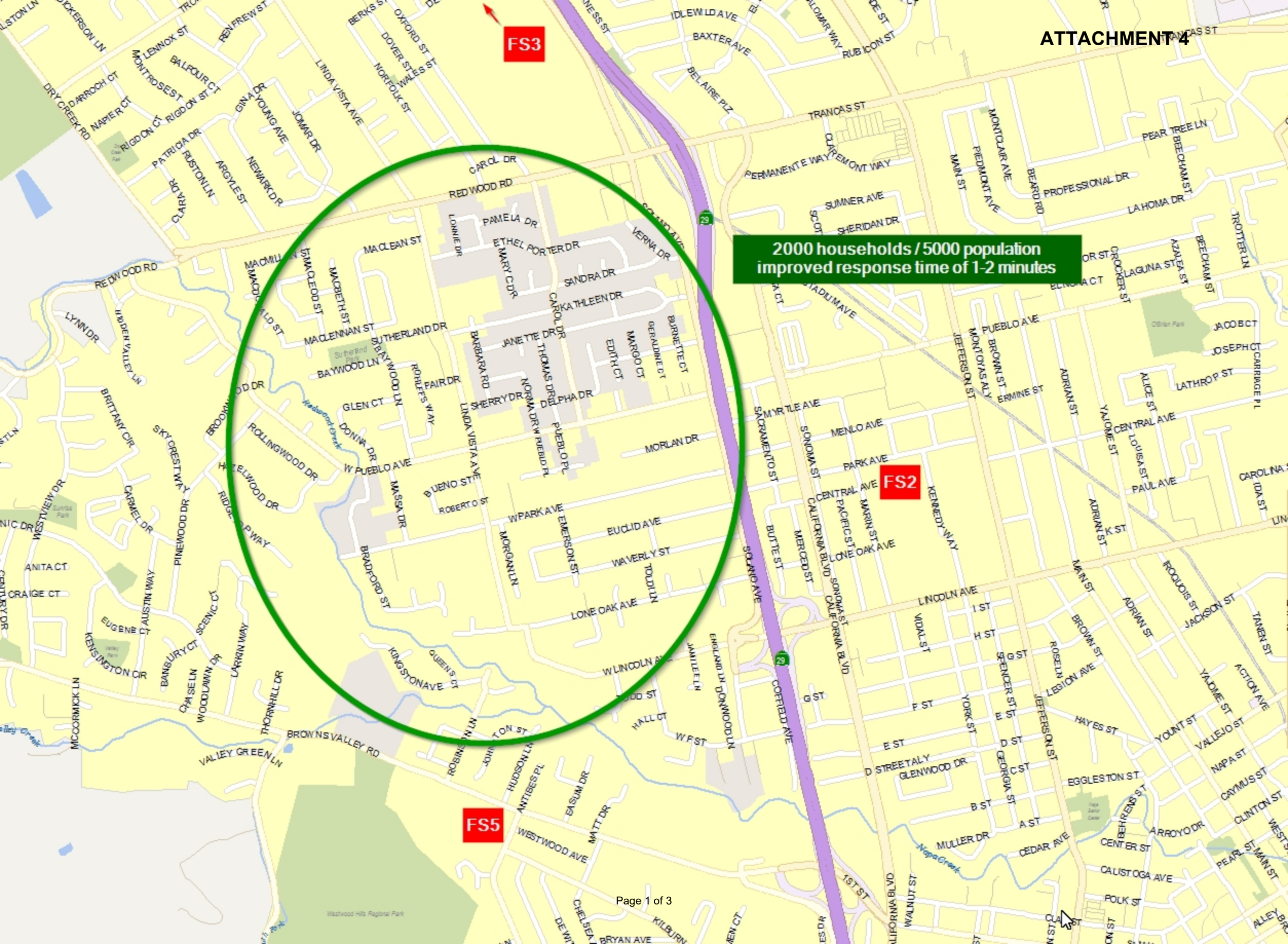


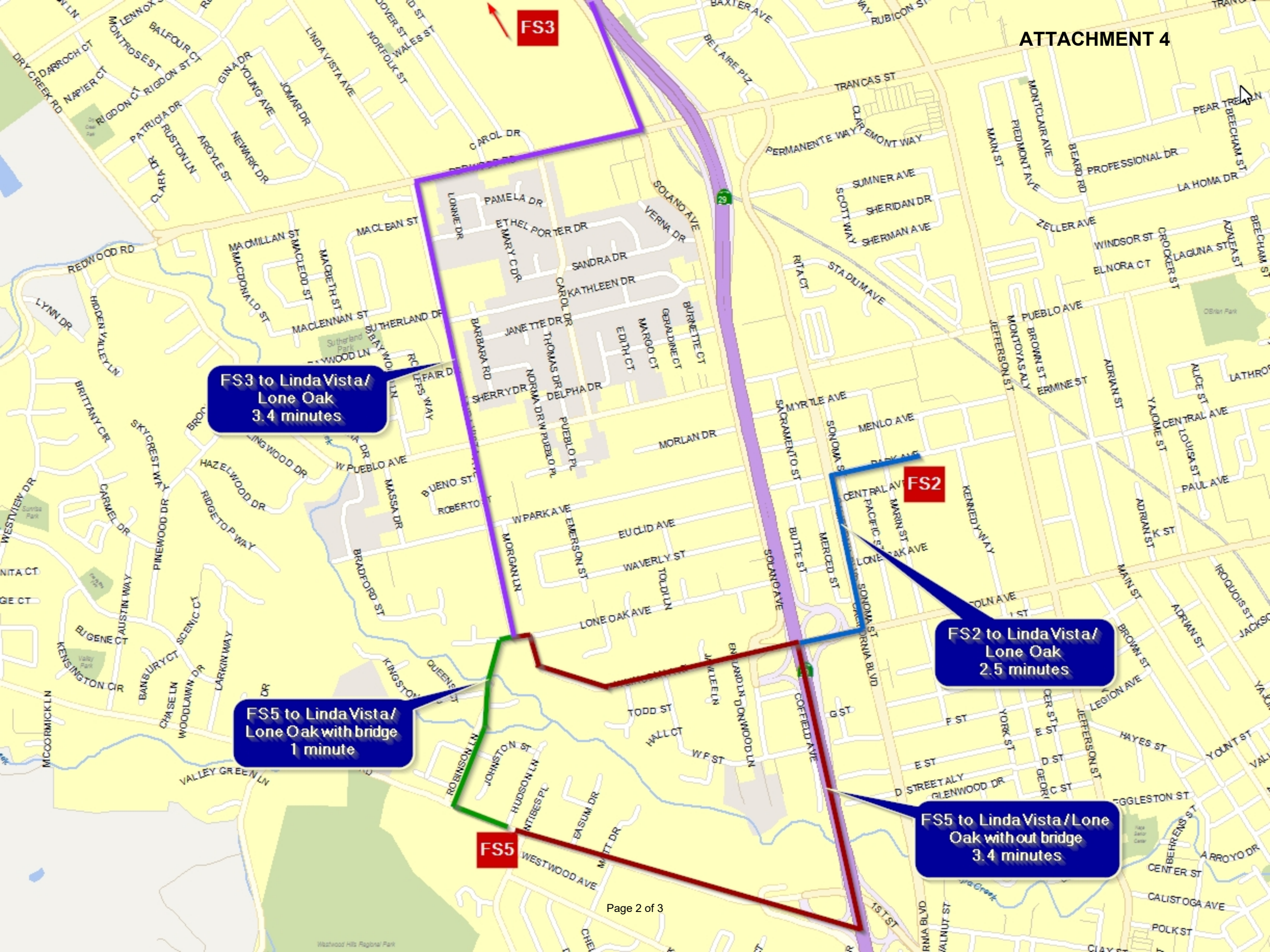
FS3

2000 households / 5000 population
improved response time of 1-2 minutes

FS2

FS5





FS3

Linda Vista & Redwood
 - FS5: 3.2 / 4.1 minutes
 - FS2: 2.9 minutes
 - FS3: 1.9 minutes
 - FS1: 4.2 minutes

Linda Vista & W. Pueblo
 - FS5: 2.0 / 4.0 minutes
 - FS2: 3.3 minutes
 - FS3: 3.1 minutes
 - FS1: 4.2 minutes

Linda Vista & Lone Oak
 - FS5: 1.0 / 3.3 minutes
 - FS2: 2.5 minutes
 - FS3: 3.4 minutes
 - FS1: 3.4 minutes

Proposed Bridge & roadway

Solano & W. Park Ave
 - FS5: 2.6 / 3.0 minutes
 - FS2: 2.0 minutes
 - FS3: 2.4 minutes
 - FS1: 2.9 minutes

W. Lincoln & W. F
 - FS5: 1.7 / 2.6 minutes
 - FS2: 1.8 minutes
 - FS3: 3 minutes
 - FS1: 2.7 minutes

FS5

FS2