

OWNER'S STATEMENT

WE, THE UNDERSIGNED BURBANK HOUSING DEVELOPMENT CORPORATION, A CALIFORNIA NON-PROFIT PUBLIC BENEFIT CORPORATION DO HEREBY STATE THAT IT IS THE ONLY ENTITY ENTITLED TO THE REAL PROPERTY DESCRIBED IN THE TENTATIVE MAP, AND THAT THE SUBDIVISION MAP SHOWN HEREON IS THE ONLY TENTATIVE MAP ENTITLED TO BE RECORDED IN THE COUNTY OF NAPA, AND IT DOES HEREBY CONSENT TO THE PREPARATION AND RECORDATION OF THIS MAP.

THE REAL PROPERTY DESCRIBED BELOW IS DEDICATED AS AN EASEMENT TO THE CITY OF NAPA FOR PUBLIC RIGHT OF WAY PURPOSES:

THOSE CERTAIN PORTIONS OF LAND DESIGNATED AS "PARCEL X" AND "RODGERS COURT".

THE REAL PROPERTY DESCRIBED BELOW IS DEDICATED AS AN EASEMENT TO THE CITY OF NAPA FOR PUBLIC UTILITY PURPOSES:

THOSE CERTAIN PORTIONS OF LAND DESIGNATED AS "PUBLIC UTILITY EASEMENT" (PUE).

THE REAL PROPERTY DESCRIBED BELOW IS DEDICATED AS AN EASEMENT TO THE CITY OF NAPA FOR PUBLIC STORM DRAIN PURPOSES:

THAT CERTAIN PORTION OF LAND DESIGNATED AS "10' PUBLIC STORM DRAIN EASEMENT".

THE OFFER OF DEDICATION FOR PUBLIC RIGHT OF WAY, PUBLIC UTILITY AND PUBLIC STORM DRAIN EASEMENT PURPOSES IS HEREBY EXPRESSLY DEEMED TO INCLUDE ALL PUBLIC FACILITIES LOCATED OVER, ON OR UNDER SAID PUBLIC RIGHT OF WAY, PUBLIC UTILITY EASEMENT AND PUBLIC STORM DRAIN EASEMENT.

IN WITNESS WHEREOF, THE UNDERSIGNED HAVE CAUSED THESE PRESENTS TO BE EXECUTED THIS 9th DAY OF July 2020.

DEVELOPER: BURBANK HOUSING DEVELOPMENT CORPORATION
A CALIFORNIA NON-PROFIT PUBLIC BENEFIT CORPORATION

BY: Lawrence Florin, CEO

NOTARY'S ACKNOWLEDGMENT

A notary public or other officer completing this certificate verifies only the identity of the individual who signed the document to which this certificate is attached, and not the truthfulness, accuracy, or validity of that document.

STATE OF CALIFORNIA

COUNTY OF Napa

ON July 9 2020 BEFORE ME, T. Dide, Notary Public

PERSONALLY APPEARED, Lawrence Florin

WHO PROVIDED TO ME ON THE BASIS OF SATISFACTORY EVIDENCE TO BE THE PERSON(S) WHOSE NAME(S) IS/ARE SUBSCRIBED TO THE INSTRUMENT AND ACKNOWLEDGED TO ME THAT HE/SHE/WEY EXERCISED THE INSTRUMENT WITH FULL KNOWLEDGE AND CAPACITY(IES), AND THAT BY HIS/HER/THEIR SIGNATURE(S) ON THE INSTRUMENT THE PERSON(S), OR THE ENTITY UPON BEHALF OF WHICH THE PERSON(S) ACTED, EXECUTED THE INSTRUMENT.

I CERTIFY UNDER PENALTY OF PERJURY UNDER THE LAWS OF THE STATE OF CALIFORNIA THAT THE FOREGOING PARAGRAPH IS TRUE AND CORRECT.

WITNESS MY HAND AND OFFICIAL SEAL.

Notary's Signature: Unfiled

Name (Print): T. Dide

My Commission No.: 2257837

My Commission Expires: 10-08-2022

PROFESSIONAL LAND SURVEYOR'S STATEMENT

THIS MAP ENTITLED "FINAL MAP OF REDWOOD GROVE" WAS PREPARED BY ME OR UNDER MY DIRECTION, AND IS BASED UPON A FIELD SURVEY IN CONFORMANCE WITH THE REQUIREMENTS OF THE SUBDIVISION MAP ACT AND LOCAL ORDINANCE AT THE REQUEST OF BURBANK HOUSING DEVELOPMENT CORPORATION DURING THE MONTHS OF OCTOBER 2019, NOVEMBER 2019, DECEMBER 2019, JANUARY 2020, FEBRUARY 2020, MARCH 2020, APRIL 2020, MAY 2020, JUNE 2020, JULY 2020, AUGUST 2020, SEPTEMBER 2020, OCTOBER 2020, NOVEMBER 2020, DECEMBER 2020, JANUARY 2021, FEBRUARY 2021, MARCH 2021, APRIL 2021, MAY 2021, JUNE 2021, JULY 2021, AUGUST 2021, SEPTEMBER 2021, OCTOBER 2021, NOVEMBER 2021, DECEMBER 2021, JANUARY 2022, FEBRUARY 2022, MARCH 2022, APRIL 2022, MAY 2022, JUNE 2022, JULY 2022, AUGUST 2022, SEPTEMBER 2022, OCTOBER 2022, NOVEMBER 2022, DECEMBER 2022, JANUARY 2023, FEBRUARY 2023, MARCH 2023, APRIL 2023, MAY 2023, JUNE 2023, JULY 2023, AUGUST 2023, SEPTEMBER 2023, OCTOBER 2023, NOVEMBER 2023, DECEMBER 2023, JANUARY 2024, FEBRUARY 2024, MARCH 2024, APRIL 2024, MAY 2024, JUNE 2024, JULY 2024, AUGUST 2024, SEPTEMBER 2024, OCTOBER 2024, NOVEMBER 2024, DECEMBER 2024, JANUARY 2025, FEBRUARY 2025, MARCH 2025, APRIL 2025, MAY 2025, JUNE 2025, JULY 2025, AUGUST 2025, SEPTEMBER 2025, OCTOBER 2025, NOVEMBER 2025, DECEMBER 2025, JANUARY 2026, FEBRUARY 2026, MARCH 2026, APRIL 2026, MAY 2026, JUNE 2026, JULY 2026, AUGUST 2026, SEPTEMBER 2026, OCTOBER 2026, NOVEMBER 2026, DECEMBER 2026, JANUARY 2027, FEBRUARY 2027, MARCH 2027, APRIL 2027, MAY 2027, JUNE 2027, JULY 2027, AUGUST 2027, SEPTEMBER 2027, OCTOBER 2027, NOVEMBER 2027, DECEMBER 2027, JANUARY 2028, FEBRUARY 2028, MARCH 2028, APRIL 2028, MAY 2028, JUNE 2028, JULY 2028, AUGUST 2028, SEPTEMBER 2028, OCTOBER 2028, NOVEMBER 2028, DECEMBER 2028, JANUARY 2029, FEBRUARY 2029, MARCH 2029, APRIL 2029, MAY 2029, JUNE 2029, JULY 2029, AUGUST 2029, SEPTEMBER 2029, OCTOBER 2029, NOVEMBER 2029, DECEMBER 2029, JANUARY 2030, FEBRUARY 2030, MARCH 2030, APRIL 2030, MAY 2030, JUNE 2030, JULY 2030, AUGUST 2030, SEPTEMBER 2030, OCTOBER 2030, NOVEMBER 2030, DECEMBER 2030, JANUARY 2031, FEBRUARY 2031, MARCH 2031, APRIL 2031, MAY 2031, JUNE 2031, JULY 2031, AUGUST 2031, SEPTEMBER 2031, OCTOBER 2031, NOVEMBER 2031, DECEMBER 2031, JANUARY 2032, FEBRUARY 2032, MARCH 2032, APRIL 2032, MAY 2032, JUNE 2032, JULY 2032, AUGUST 2032, SEPTEMBER 2032, OCTOBER 2032, NOVEMBER 2032, DECEMBER 2032, JANUARY 2033, FEBRUARY 2033, MARCH 2033, APRIL 2033, MAY 2033, JUNE 2033, JULY 2033, AUGUST 2033, SEPTEMBER 2033, OCTOBER 2033, NOVEMBER 2033, DECEMBER 2033, JANUARY 2034, FEBRUARY 2034, MARCH 2034, APRIL 2034, MAY 2034, JUNE 2034, JULY 2034, AUGUST 2034, SEPTEMBER 2034, OCTOBER 2034, NOVEMBER 2034, DECEMBER 2034, JANUARY 2035, FEBRUARY 2035, MARCH 2035, APRIL 2035, MAY 2035, JUNE 2035, JULY 2035, AUGUST 2035, SEPTEMBER 2035, OCTOBER 2035, NOVEMBER 2035, DECEMBER 2035, JANUARY 2036, FEBRUARY 2036, MARCH 2036, APRIL 2036, MAY 2036, JUNE 2036, JULY 2036, AUGUST 2036, SEPTEMBER 2036, OCTOBER 2036, NOVEMBER 2036, DECEMBER 2036, JANUARY 2037, FEBRUARY 2037, MARCH 2037, APRIL 2037, MAY 2037, JUNE 2037, JULY 2037, AUGUST 2037, SEPTEMBER 2037, OCTOBER 2037, NOVEMBER 2037, DECEMBER 2037, JANUARY 2038, FEBRUARY 2038, MARCH 2038, APRIL 2038, MAY 2038, JUNE 2038, JULY 2038, AUGUST 2038, SEPTEMBER 2038, OCTOBER 2038, NOVEMBER 2038, DECEMBER 2038, JANUARY 2039, FEBRUARY 2039, MARCH 2039, APRIL 2039, MAY 2039, JUNE 2039, JULY 2039, AUGUST 2039, SEPTEMBER 2039, OCTOBER 2039, NOVEMBER 2039, DECEMBER 2039, JANUARY 2040, FEBRUARY 2040, MARCH 2040, APRIL 2040, MAY 2040, JUNE 2040, JULY 2040, AUGUST 2040, SEPTEMBER 2040, OCTOBER 2040, NOVEMBER 2040, DECEMBER 2040, JANUARY 2041, FEBRUARY 2041, MARCH 2041, APRIL 2041, MAY 2041, JUNE 2041, JULY 2041, AUGUST 2041, SEPTEMBER 2041, OCTOBER 2041, NOVEMBER 2041, DECEMBER 2041, JANUARY 2042, FEBRUARY 2042, MARCH 2042, APRIL 2042, MAY 2042, JUNE 2042, JULY 2042, AUGUST 2042, SEPTEMBER 2042, OCTOBER 2042, NOVEMBER 2042, DECEMBER 2042, JANUARY 2043, FEBRUARY 2043, MARCH 2043, APRIL 2043, MAY 2043, JUNE 2043, JULY 2043, AUGUST 2043, SEPTEMBER 2043, OCTOBER 2043, NOVEMBER 2043, DECEMBER 2043, JANUARY 2044, FEBRUARY 2044, MARCH 2044, APRIL 2044, MAY 2044, JUNE 2044, JULY 2044, AUGUST 2044, SEPTEMBER 2044, OCTOBER 2044, NOVEMBER 2044, DECEMBER 2044, JANUARY 2045, FEBRUARY 2045, MARCH 2045, APRIL 2045, MAY 2045, JUNE 2045, JULY 2045, AUGUST 2045, SEPTEMBER 2045, OCTOBER 2045, NOVEMBER 2045, DECEMBER 2045, JANUARY 2046, FEBRUARY 2046, MARCH 2046, APRIL 2046, MAY 2046, JUNE 2046, JULY 2046, AUGUST 2046, SEPTEMBER 2046, OCTOBER 2046, NOVEMBER 2046, DECEMBER 2046, JANUARY 2047, FEBRUARY 2047, MARCH 2047, APRIL 2047, MAY 2047, JUNE 2047, JULY 2047, AUGUST 2047, SEPTEMBER 2047, OCTOBER 2047, NOVEMBER 2047, DECEMBER 2047, JANUARY 2048, FEBRUARY 2048, MARCH 2048, APRIL 2048, MAY 2048, JUNE 2048, JULY 2048, AUGUST 2048, SEPTEMBER 2048, OCTOBER 2048, NOVEMBER 2048, DECEMBER 2048, JANUARY 2049, FEBRUARY 2049, MARCH 2049, APRIL 2049, MAY 2049, JUNE 2049, JULY 2049, AUGUST 2049, SEPTEMBER 2049, OCTOBER 2049, NOVEMBER 2049, DECEMBER 2049, JANUARY 2050, FEBRUARY 2050, MARCH 2050, APRIL 2050, MAY 2050, JUNE 2050, JULY 2050, AUGUST 2050, SEPTEMBER 2050, OCTOBER 2050, NOVEMBER 2050, DECEMBER 2050, JANUARY 2051, FEBRUARY 2051, MARCH 2051, APRIL 2051, MAY 2051, JUNE 2051, JULY 2051, AUGUST 2051, SEPTEMBER 2051, OCTOBER 2051, NOVEMBER 2051, DECEMBER 2051, JANUARY 2052, FEBRUARY 2052, MARCH 2052, APRIL 2052, MAY 2052, JUNE 2052, JULY 2052, AUGUST 2052, SEPTEMBER 2052, OCTOBER 2052, NOVEMBER 2052, DECEMBER 2052, JANUARY 2053, FEBRUARY 2053, MARCH 2053, APRIL 2053, MAY 2053, JUNE 2053, JULY 2053, AUGUST 2053, SEPTEMBER 2053, OCTOBER 2053, NOVEMBER 2053, DECEMBER 2053, JANUARY 2054, FEBRUARY 2054, MARCH 2054, APRIL 2054, MAY 2054, JUNE 2054, JULY 2054, AUGUST 2054, SEPTEMBER 2054, OCTOBER 2054, NOVEMBER 2054, DECEMBER 2054, JANUARY 2055, FEBRUARY 2055, MARCH 2055, APRIL 2055, MAY 2055, JUNE 2055, JULY 2055, AUGUST 2055, SEPTEMBER 2055, OCTOBER 2055, NOVEMBER 2055, DECEMBER 2055, JANUARY 2056, FEBRUARY 2056, MARCH 2056, APRIL 2056, MAY 2056, JUNE 2056, JULY 2056, AUGUST 2056, SEPTEMBER 2056, OCTOBER 2056, NOVEMBER 2056, DECEMBER 2056, JANUARY 2057, FEBRUARY 2057, MARCH 2057, APRIL 2057, MAY 2057, JUNE 2057, JULY 2057, AUGUST 2057, SEPTEMBER 2057, OCTOBER 2057, NOVEMBER 2057, DECEMBER 2057, JANUARY 2058, FEBRUARY 2058, MARCH 2058, APRIL 2058, MAY 2058, JUNE 2058, JULY 2058, AUGUST 2058, SEPTEMBER 2058, OCTOBER 2058, NOVEMBER 2058, DECEMBER 2058, JANUARY 2059, FEBRUARY 2059, MARCH 2059, APRIL 2059, MAY 2059, JUNE 2059, JULY 2059, AUGUST 2059, SEPTEMBER 2059, OCTOBER 2059, NOVEMBER 2059, DECEMBER 2059, JANUARY 2060, FEBRUARY 2060, MARCH 2060, APRIL 2060, MAY 2060, JUNE 2060, JULY 2060, AUGUST 2060, SEPTEMBER 2060, OCTOBER 2060, NOVEMBER 2060, DECEMBER 2060, JANUARY 2061, FEBRUARY 2061, MARCH 2061, APRIL 2061, MAY 2061, JUNE 2061, JULY 2061, AUGUST 2061, SEPTEMBER 2061, OCTOBER 2061, NOVEMBER 2061, DECEMBER 2061, JANUARY 2062, FEBRUARY 2062, MARCH 2062, APRIL 2062, MAY 2062, JUNE 2062, JULY 2062, AUGUST 2062, SEPTEMBER 2062, OCTOBER 2062, NOVEMBER 2062, DECEMBER 2062, JANUARY 2063, FEBRUARY 2063, MARCH 2063, APRIL 2063, MAY 2063, JUNE 2063, JULY 2063, AUGUST 2063, SEPTEMBER 2063, OCTOBER 2063, NOVEMBER 2063, DECEMBER 2063, JANUARY 2064, FEBRUARY 2064, MARCH 2064, APRIL 2064, MAY 2064, JUNE 2064, JULY 2064, AUGUST 2064, SEPTEMBER 2064, OCTOBER 2064, NOVEMBER 2064, DECEMBER 2064, JANUARY 2065, FEBRUARY 2065, MARCH 2065, APRIL 2065, MAY 2065, JUNE 2065, JULY 2065, AUGUST 2065, SEPTEMBER 2065, OCTOBER 2065, NOVEMBER 2065, DECEMBER 2065, JANUARY 2066, FEBRUARY 2066, MARCH 2066, APRIL 2066, MAY 2066, JUNE 2066, JULY 2066, AUGUST 2066, SEPTEMBER 2066, OCTOBER 2066, NOVEMBER 2066, DECEMBER 2066, JANUARY 2067, FEBRUARY 2067, MARCH 2067, APRIL 2067, MAY 2067, JUNE 2067, JULY 2067, AUGUST 2067, SEPTEMBER 2067, OCTOBER 2067, NOVEMBER 2067, DECEMBER 2067, JANUARY 2068, FEBRUARY 2068, MARCH 2068, APRIL 2068, MAY 2068, JUNE 2068, JULY 2068, AUGUST 2068, SEPTEMBER 2068, OCTOBER 2068, NOVEMBER 2068, DECEMBER 2068, JANUARY 2069, FEBRUARY 2069, MARCH 2069, APRIL 2069, MAY 2069, JUNE 2069, JULY 2069, AUGUST 2069, SEPTEMBER 2069, OCTOBER 2069, NOVEMBER 2069, DECEMBER 2069, JANUARY 2070, FEBRUARY 2070, MARCH 2070, APRIL 2070, MAY 2070, JUNE 2070, JULY 2070, AUGUST 2070, SEPTEMBER 2070, OCTOBER 2070, NOVEMBER 2070, DECEMBER 2070, JANUARY 2071, FEBRUARY 2071, MARCH 2071, APRIL 2071, MAY 2071, JUNE 2071, JULY 2071, AUGUST 2071, SEPTEMBER 2071, OCTOBER 2071, NOVEMBER 2071, DECEMBER 2071, JANUARY 2072, FEBRUARY 2072, MARCH 2072, APRIL 2072, MAY 2072, JUNE 2072, JULY 2072, AUGUST 2072, SEPTEMBER 2072, OCTOBER 2072, NOVEMBER 2072, DECEMBER 2072, JANUARY 2073, FEBRUARY 2073, MARCH 2073, APRIL 2073, MAY 2073, JUNE 2073, JULY 2073, AUGUST 2073, SEPTEMBER 2073, OCTOBER 2073, NOVEMBER 2073, DECEMBER 2073, JANUARY 2074, FEBRUARY 2074, MARCH 2074, APRIL 2074, MAY 2074, JUNE 2074, JULY 2074, AUGUST 2074, SEPTEMBER 2074, OCTOBER 2074, NOVEMBER 2074, DECEMBER 2074, JANUARY 2075, FEBRUARY 2075, MARCH 2075, APRIL 2075, MAY 2075, JUNE 2075, JULY 2075, AUGUST 2075, SEPTEMBER 2075, OCTOBER 2075, NOVEMBER 2075, DECEMBER 2075, JANUARY 2076, FEBRUARY 2076, MARCH 2076, APRIL 2076, MAY 2076, JUNE 2076, JULY 2076, AUGUST 2076, SEPTEMBER 2076, OCTOBER 2076, NOVEMBER 2076, DECEMBER 2076, JANUARY 2077, FEBRUARY 2077, MARCH 2077, APRIL 2077, MAY 2077, JUNE 2077, JULY 2077, AUGUST 2077, SEPTEMBER 2077, OCTOBER 2077, NOVEMBER 2077, DECEMBER 2077, JANUARY 2078, FEBRUARY 2078, MARCH 2078, APRIL 2078, MAY 2078, JUNE 2078, JULY 2078, AUGUST 2078, SEPTEMBER 2078, OCTOBER 2078, NOVEMBER 2078, DECEMBER 2078, JANUARY 2079, FEBRUARY 2079, MARCH 2079, APRIL 2079, MAY 2079, JUNE 2079, JULY 2079, AUGUST 2079, SEPTEMBER 2079, OCTOBER 2079, NOVEMBER 2079, DECEMBER 2079, JANUARY 2080, FEBRUARY 2080, MARCH 2080, APRIL 2080, MAY 2080, JUNE 2080, JULY 2080, AUGUST 2080, SEPTEMBER 2080, OCTOBER 2080, NOVEMBER 2080, DECEMBER 2080, JANUARY 2081, FEBRUARY 2081, MARCH 2081, APRIL 2081, MAY 2081, JUNE 2081, JULY 2081, AUGUST 2081, SEPTEMBER 2081, OCTOBER 2081, NOVEMBER 2081, DECEMBER 2081, JANUARY 2082, FEBRUARY 2082, MARCH 2082, APRIL 2082, MAY 2082, JUNE 2082, JULY 2082, AUGUST 2082, SEPTEMBER 2082, OCTOBER 2082, NOVEMBER 2082, DECEMBER 2082, JANUARY 2083, FEBRUARY 2083, MARCH 2083, APRIL 2083, MAY 2083, JUNE 2083, JULY 2083, AUGUST 2083, SEPTEMBER 2083, OCTOBER 2083, NOVEMBER 2083, DECEMBER 2083, JANUARY 2084, FEBRUARY 2084, MARCH 2084, APRIL 2084, MAY 2084, JUNE 2084, JULY 2084, AUGUST 2084, SEPTEMBER 2084, OCTOBER 2084, NOVEMBER 2084, DECEMBER 2084, JANUARY 2085, FEBRUARY 2085, MARCH 2085, APRIL 2085, MAY 2085, JUNE 2085, JULY 2085, AUGUST 2085, SEPTEMBER 2085, OCTOBER 2085, NOVEMBER 2085, DECEMBER 2085, JANUARY 2086, FEBRUARY 2086, MARCH 2086, APRIL 2086, MAY 2086, JUNE 2086, JULY 2086, AUGUST 2086, SEPTEMBER 2086, OCTOBER 2086, NOVEMBER 2086, DECEMBER 2086, JANUARY 2087, FEBRUARY 2087, MARCH 2087, APRIL 2087, MAY 2087, JUNE 2087, JULY 2087, AUGUST 2087, SEPTEMBER 2087, OCTOBER 2087, NOVEMBER 2087, DECEMBER 2087, JANUARY 2088, FEBRUARY 2088, MARCH 2088, APRIL 2088, MAY 2088, JUNE 2088, JULY 2088, AUGUST 2088, SEPTEMBER 2088, OCTOBER 2088, NOVEMBER 2088, DECEMBER 2088, JANUARY 2089, FEBRUARY 2089, MARCH 2089, APRIL 2089, MAY 2089, JUNE 2089, JULY 2089, AUGUST 2089, SEPTEMBER 2089, OCTOBER 2089, NOVEMBER 2089, DECEMBER 2089, JANUARY 2090, FEBRUARY 2090, MARCH 2090, APRIL 2090, MAY 2090, JUNE 2090, JULY 2090, AUGUST 2090, SEPTEMBER 2090, OCTOBER 2090, NOVEMBER 2090, DECEMBER 2090, JANUARY 2091, FEBRUARY 2091, MARCH 2091, APRIL 2091, MAY 2091, JUNE 2091, JULY 2091, AUGUST 2091, SEPTEMBER 2091, OCTOBER 2091, NOVEMBER 2091, DECEMBER 2091, JANUARY 2092, FEBRUARY 2092, MARCH 2092, APRIL 2092, MAY 2092, JUNE 2092, JULY 2092, AUGUST 2092, SEPTEMBER 2092, OCTOBER 2092, NOVEMBER 2092, DECEMBER 2092, JANUARY 2093, FEBRUARY 2093, MARCH 2093, APRIL 2093, MAY 2093, JUNE 2093, JULY 2093, AUGUST 2093, SEPTEMBER 2093, OCTOBER 2093, NOVEMBER 2093, DECEMBER 2093, JANUARY 2094, FEBRUARY 2094, MARCH 2094, APRIL 2094, MAY 2094, JUNE 2094, JULY 2094, AUGUST 2094, SEPTEMBER 2094, OCTOBER 2094, NOVEMBER 2094, DECEMBER 2094, JANUARY 2095, FEBRUARY 2095, MARCH 2095, APRIL 2095, MAY 2095, JUNE 2095, JULY 2095, AUGUST 2095, SEPTEMBER 2095, OCTOBER 2095, NOVEMBER 2095, DECEMBER 2095, JANUARY 2096, FEBRUARY 2096, MARCH 2096, APRIL 2096, MAY 2096, JUNE 2096, JULY 2096, AUGUST 2096, SEPTEMBER 2096, OCTOBER 2096, NOVEMBER 2096, DECEMBER 2096, JANUARY 2097, FEBRUARY 2097, MARCH 2097, APRIL 2097, MAY 2097, JUNE 2097, JULY 2097, AUGUST 2097, SEPTEMBER 2097, OCTOBER 2097, NOVEMBER 2097, DECEMBER 2097, JANUARY 2098, FEBRUARY 2098, MARCH 2098, APRIL 2098, MAY 2098, JUNE 2098, JULY 2098, AUGUST 2098, SEPTEMBER 2098, OCTOBER 2098, NOVEMBER 2098, DECEMBER 2098, JANUARY 2099, FEBRUARY 2099, MARCH 2099, APRIL 2099, MAY 2099, JUNE 2099, JULY 2099, AUGUST 2099, SEPTEMBER 2099, OCTOBER 2099, NOVEMBER 2099, DECEMBER 2099, JANUARY 2100, FEBRUARY 2100, MARCH 2100, APRIL 2100, MAY 2100, JUNE 2100, JULY 2100, AUGUST 2100, SEPTEMBER 2100, OCTOBER 2100, NOVEMBER 2100, DECEMBER 2100, JANUARY 2101, FEBRUARY 2101, MARCH 2101, APRIL 2101, MAY 2101, JUNE 2101, JULY 2101, AUGUST 2101, SEPTEMBER 2101, OCTOBER 2101, NOVEMBER 2101, DECEMBER 2101, JANUARY 2102, FEBRUARY 2102, MARCH 2102, APRIL 2102, MAY 2102, JUNE 2102, JULY 2102, AUGUST 2102, SEPTEMBER 2102, OCTOBER 2102, NOVEMBER 2102, DECEMBER 2102, JANUARY 2103, FEBRUARY 2103, MARCH 2103, APRIL 2103, MAY 2103, JUNE 2103, JULY 2103, AUGUST 2103, SEPTEMBER 2103, OCTOBER 2103, NOVEMBER 2103, DECEMBER 2103, JANUARY 2104, FEBRUARY 2104, MARCH 2104, APRIL 2104, MAY 2104, JUNE 2104, JULY 2104, AUGUST 2104, SEPTEMBER 2104, OCTOBER 2104, NOVEMBER 2104, DECEMBER 2104, JANUARY 2105, FEBRUARY 2105, MARCH 2105, APRIL 2105, MAY 2105, JUNE 2105, JULY 2105, AUGUST 2105, SEPTEMBER 2105, OCTOBER 2105, NOVEMBER 2105, DECEMBER 2105, JANUARY 2106, FEBRUARY 2106, MARCH 2106, APRIL 2106, MAY 2106, JUNE 2106, JULY 2106, AUGUST 2106, SEPTEMBER 2106, OCTOBER 2106, NOVEMBER 2106, DECEMBER 2106, JANUARY 2107, FEBRUARY 2107, MARCH 2107, APRIL 2107, MAY 2107, JUNE 2107, JULY 2107, AUGUST 2107, SEPTEMBER 2107, OCTOBER 2107, NOVEMBER 2107, DECEMBER 2107, JANUARY 2108, FEBRUARY 2108, MARCH 2108, APRIL 2108, MAY 2108, JUNE 2108, JULY 2108, AUGUST 2108, SEPTEMBER 2108, OCTOBER 2108, NOVEMBER 2108, DECEMBER 2108, JANUARY 2109, FEBRUARY 2109, MARCH 2109, APRIL 2109, MAY 2109, JUNE 2109, JULY 2109, AUGUST 2109, SEPTEMBER 2109, OCTOBER 2109, NOVEMBER 2109, DECEMBER 2109, JANUARY 2110, FEBRUARY 2110, MARCH 2110, APRIL 2110, MAY 2110, JUNE 2110, JULY 2110, AUGUST 2110, SEPTEMBER 2110, OCTOBER 2110, NOVEMBER 2110, DECEMBER 2110, JANUARY 2111, FEBRUARY 2111, MARCH 2111, APRIL 2111, MAY 2111, JUNE 2111, JULY 2111, AUGUST 2111, SEPTEMBER 2111, OCTOBER 2111, NOVEMBER 2111, DECEMBER 2111, JANUARY 2112, FEBRUARY 2112, MARCH 2112, APRIL 2112, MAY 2112, JUNE 2112, JULY 2112, AUGUST 2112, SEPTEMBER 2112, OCTOBER 2112, NOVEMBER 2112, DECEMBER 2112, JANUARY 2113, FEBRUARY 2113, MARCH 2113, APRIL 2113, MAY 2113, JUNE 2113, JULY 2113, AUGUST 2113, SEPTEMBER 2113, OCTOBER 2113, NOVEMBER 2113, DECEMBER 2113, JANUARY 2114, FEBRUARY 2114, MARCH 2114, APRIL 2114, MAY 2114, JUNE 2114, JULY 2114, AUGUST 2114, SEPTEMBER 2114, OCTOBER 2114, NOVEMBER 2114, DECEMBER 2114, JANUARY 2115, FEBRUARY 2115, MARCH 2115, APRIL 2115, MAY 2115, JUNE 2115, JULY 2115, AUGUST 2115, SEPTEMBER 2115, OCTOBER 2115, NOVEMBER 2115, DECEMBER 2115, JANUARY 2116, FEBRUARY 2116, MARCH 2116, APRIL 2116, MAY 2116, JUNE 2116, JULY 2116, AUGUST 2116, SEPTEMBER 2116, OCTOBER 2116, NOVEMBER 2116, DECEMBER 2116, JANUARY 2117, FEBRUARY 2117, MARCH 2117, APRIL 2117, MAY 2117, JUNE 2117, JULY 2117, AUGUST 2117, SEPTEMBER 2117, OCTOBER 2117, NOVEMBER 2117, DECEMBER 2117, JANUARY 2118, FEBRUARY 2118, MARCH 2118, APRIL 2118, MAY 2118, JUNE 2118, JULY 2118, AUGUST 2118, SEPTEMBER 2118, OCTOBER 2118, NOVEMBER 2118, DECEMBER 2118, JANUARY 2119, FEBRUARY 2119, MARCH 2119, APRIL 2119, MAY 2119, JUNE 2119, JULY 2119, AUGUST 2119, SEPTEMBER 2119, OCTOBER 2119, NOVEMBER 2119, DECEMBER 2119, JANUARY 2120, FEBRUARY 2120, MARCH 2120, APRIL 2120, MAY 2120, JUNE 2120, JULY 2120, AUGUST 2120, SEPTEMBER 2120, OCTOBER 2120, NOVEMBER 2120, DECEMBER 2120, JANUARY 2121, FEBRUARY 2121, MARCH 2121, APRIL 2121, MAY 2121, JUNE 2121, JULY 2121, AUGUST 2121, SEPTEMBER 2121, OCTOBER 2121, NOVEMBER 2121, DECEMBER 2121, JANUARY 2122, FEBRUARY 2122, MARCH 2122, APRIL 2122, MAY 2122, JUNE 2122, JULY 2122, AUGUST 2122, SEPTEMBER 2122, OCTOBER 2122, NOVEMBER 2122, DECEMBER 2122, JANUARY 2123, FEBRUARY 2123, MARCH 2123, APRIL 2123, MAY 2123, JUNE 2123, JULY 2123, AUGUST 2123, SEPTEMBER 2123, OCTOBER 2123, NOVEMBER 2123, DECEMBER 2123, JANUARY 2124, FEBRUARY 2124, MARCH 2124, APRIL 2124, MAY 2124, JUNE 2124, JULY 2124, AUGUST 2124, SEPTEMBER 2124, OCTOBER 2124, NOVEMBER 2124, DECEMBER 2124, JANUARY 2125,

BENEFICIARIES STATEMENT

COUNTY OF NAPA, A POLITICAL SUBDIVISION OF THE STATE OF CALIFORNIA, UNDER DEED OF TRUST AS RECORDED NOVEMBER 22, 2017 AS SERIES NUMBER 2017-0026054 OF OFFICIAL RECORDS OF NAPA COUNTY, AGAINST THE LAND HEREIN SHOWN, HEREBY CONSENTS TO THE MAKING AND FILING OF THIS MAP.

COUNTY OF NAPA, A POLITICAL SUBDIVISION OF THE STATE OF CALIFORNIA

DIANE DILLON
CHAIR OF THE NAPA COUNTY
BOARD OF SUPERVISORS

DATE

BENEFICIARIES STATEMENT

CITY OF NAPA, A CALIFORNIA CHARTER CITY, UNDER DEED OF TRUST AS RECORDED NOVEMBER 22, 2017 AS SERIES NUMBER 2017-0026055 OF OFFICIAL RECORDS OF NAPA COUNTY, AGAINST THE LAND HEREIN SHOWN, HEREBY CONSENTS TO THE MAKING AND FILING OF THIS MAP.

CITY OF NAPA, A CALIFORNIA CHARTER CITY

STEVEN POTTER
CITY MANAGER

DATE

TRUSTEE'S STATEMENT

OLD REPUBLIC TITLE COMPANY, TRUSTEE UNDER THE DEED OF TRUST AS RECORDED JUNE 4, 2019 SERIES NUMBER 2019-0010289 OF OFFICIAL RECORDS, NAPA COUNTY, CALIFORNIA, AGAINST THE LAND HEREIN SHOWN, HEREBY CONSENTS TO THE MAKING AND FILING OF THIS MAP.

OLD REPUBLIC TITLE COMPANY

BY: Tiffany Diehl
TIFFANY DIEHL
SENIOR VICE PRESIDENT

July 21, 2020
DATE

NOTARY'S ACKNOWLEDGMENT

A notary public or other officer completing this certificate verifies only the identity of the individual who signed the document to which this certificate is attached, and not the truthfulness, accuracy, or validity of that document.

STATE OF CALIFORNIA
COUNTY OF

ON 2020 BEFORE ME,

PERSONALLY APPEARED
WHOSE NAME(S) IS/ARE SUBSCRIBED TO THE WITHIN INSTRUMENT AND ACKNOWLEDGED TO ME THAT HE/SHE/THEY EXECUTED THE SAME IN HIS/HER/THEIR AUTHORIZED CAPACITY(ES), AND THAT BY HIS/HER/THEIR SIGNATURE(S) ON THE INSTRUMENT THE PERSON(S) OR THE ENTITY UPON BEHALF OF WHICH THE PERSON(S) ACTED, EXECUTED THE INSTRUMENT.

I CERTIFY UNDER PENALTY OF PERJURY UNDER THE LAWS OF THE STATE OF CALIFORNIA THAT THE FOREGOING PARAGRAPH IS TRUE AND CORRECT.

WITNESS MY HAND AND OFFICIAL SEAL

Notary's Signature: _____
Name (Print): _____
My Commission No.: _____
My Commission Expires: _____

NOTARY'S ACKNOWLEDGMENT

A notary public or other officer completing this certificate verifies only the identity of the individual who signed the document to which this certificate is attached, and not the truthfulness, accuracy, or validity of that document.

STATE OF CALIFORNIA
COUNTY OF

ON 2020 BEFORE ME,

PERSONALLY APPEARED
WHOSE NAME(S) IS/ARE SUBSCRIBED TO THE WITHIN INSTRUMENT AND ACKNOWLEDGED TO ME THAT HE/SHE/THEY EXECUTED THE SAME IN HIS/HER/THEIR AUTHORIZED CAPACITY(ES), AND THAT BY HIS/HER/THEIR SIGNATURE(S) ON THE INSTRUMENT THE PERSON(S) OR THE ENTITY UPON BEHALF OF WHICH THE PERSON(S) ACTED, EXECUTED THE INSTRUMENT.

I CERTIFY UNDER PENALTY OF PERJURY UNDER THE LAWS OF THE STATE OF CALIFORNIA THAT THE FOREGOING PARAGRAPH IS TRUE AND CORRECT.

WITNESS MY HAND AND OFFICIAL SEAL

Notary's Signature: _____
Name (Print): _____
My Commission No.: _____
My Commission Expires: _____

NOTARY'S ACKNOWLEDGMENT

A notary public or other officer completing this certificate verifies only the identity of the individual who signed the document to which this certificate is attached, and not the truthfulness, accuracy, or validity of that document.

STATE OF CALIFORNIA
COUNTY OF

ON July 21, 2020 BEFORE ME,

PERSONALLY APPEARED Tiffany Diehl
WHOSE NAME(S) IS/ARE SUBSCRIBED TO THE WITHIN INSTRUMENT AND ACKNOWLEDGED TO ME THAT HE/SHE/THEY EXECUTED THE SAME IN HIS/HER/THEIR AUTHORIZED CAPACITY(ES), AND THAT BY HIS/HER/THEIR SIGNATURE(S) ON THE INSTRUMENT THE PERSON(S) OR THE ENTITY UPON BEHALF OF WHICH THE PERSON(S) ACTED, EXECUTED THE INSTRUMENT.

I CERTIFY UNDER PENALTY OF PERJURY UNDER THE LAWS OF THE STATE OF CALIFORNIA THAT THE FOREGOING PARAGRAPH IS TRUE AND CORRECT.

WITNESS MY HAND AND OFFICIAL SEAL

Notary's Signature: _____
Name (Print): A. Greco
My Commission No.: 2319515
My Commission Expires: February 20, 2024

FINAL MAP

OF

REDWOOD GROVE

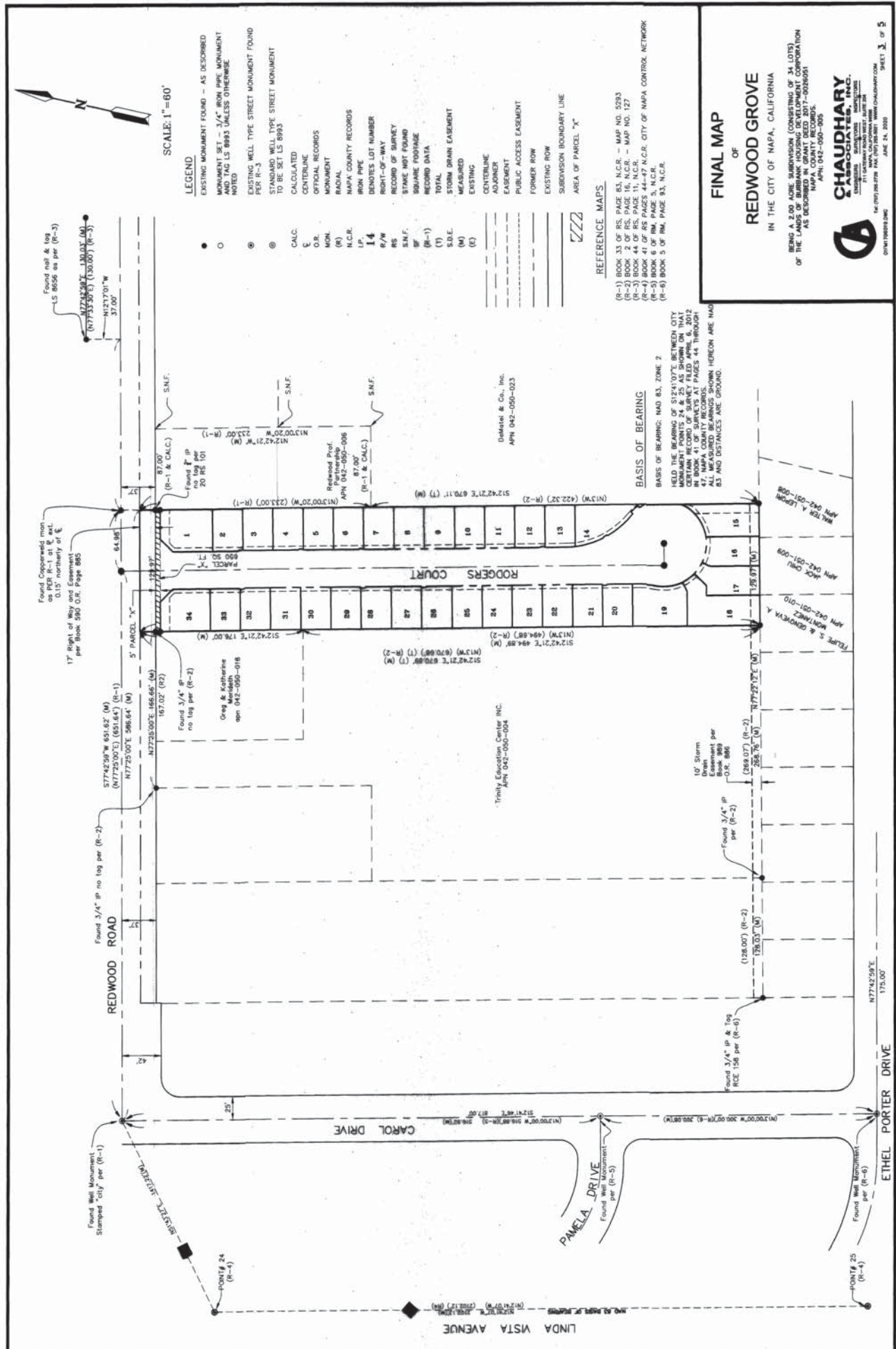
IN THE CITY OF NAPA, CALIFORNIA

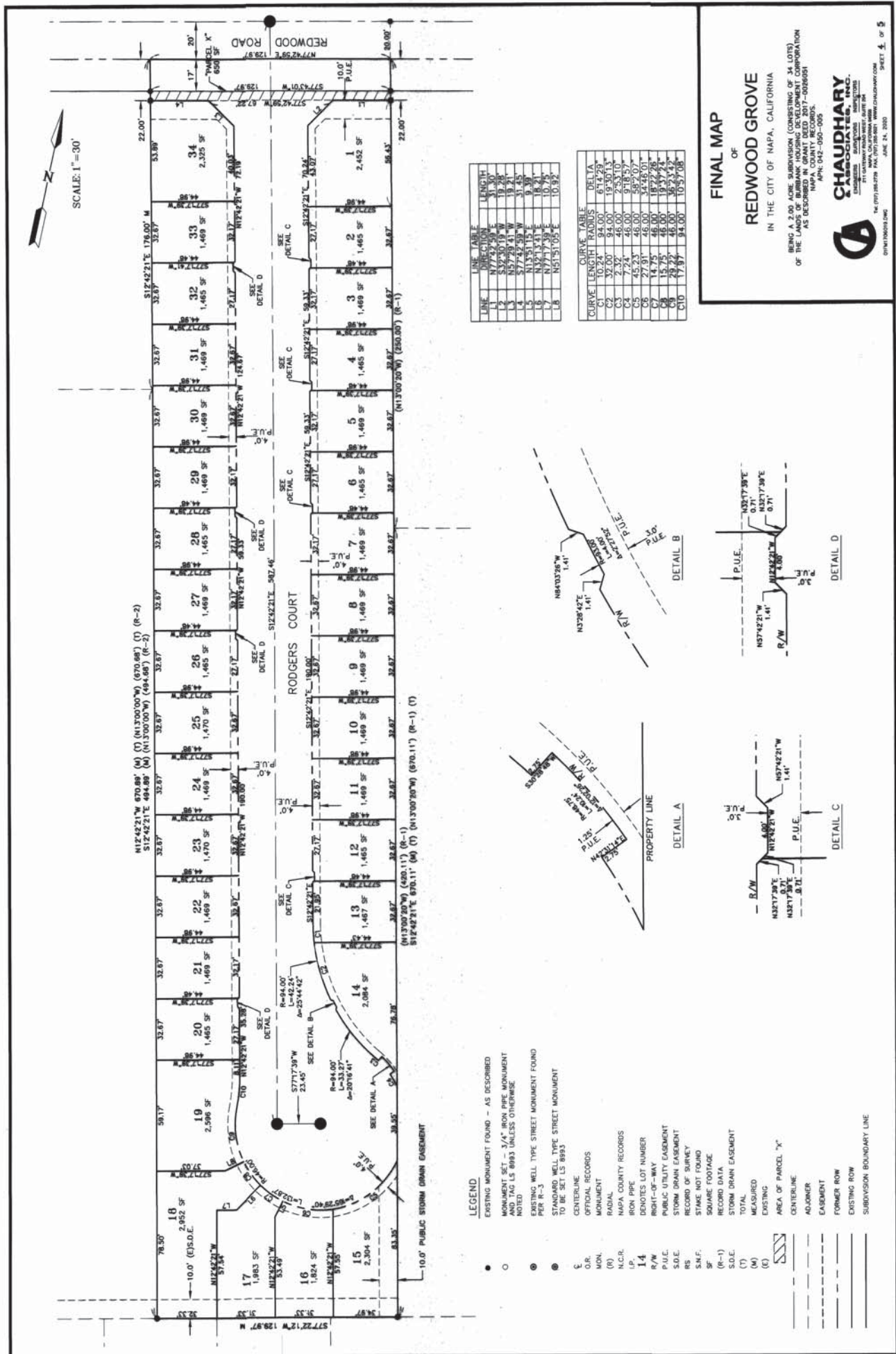
BEING A 2.00 ACRE SUBDIVISION (CONSISTING OF 34 LOTS) OF THE LAND SHOWN HEREON, AS DESCRIBED IN GRANT DEED 2017-0026051 NAPA COUNTY RECORDS, APRIL ONE-ONE-ONE

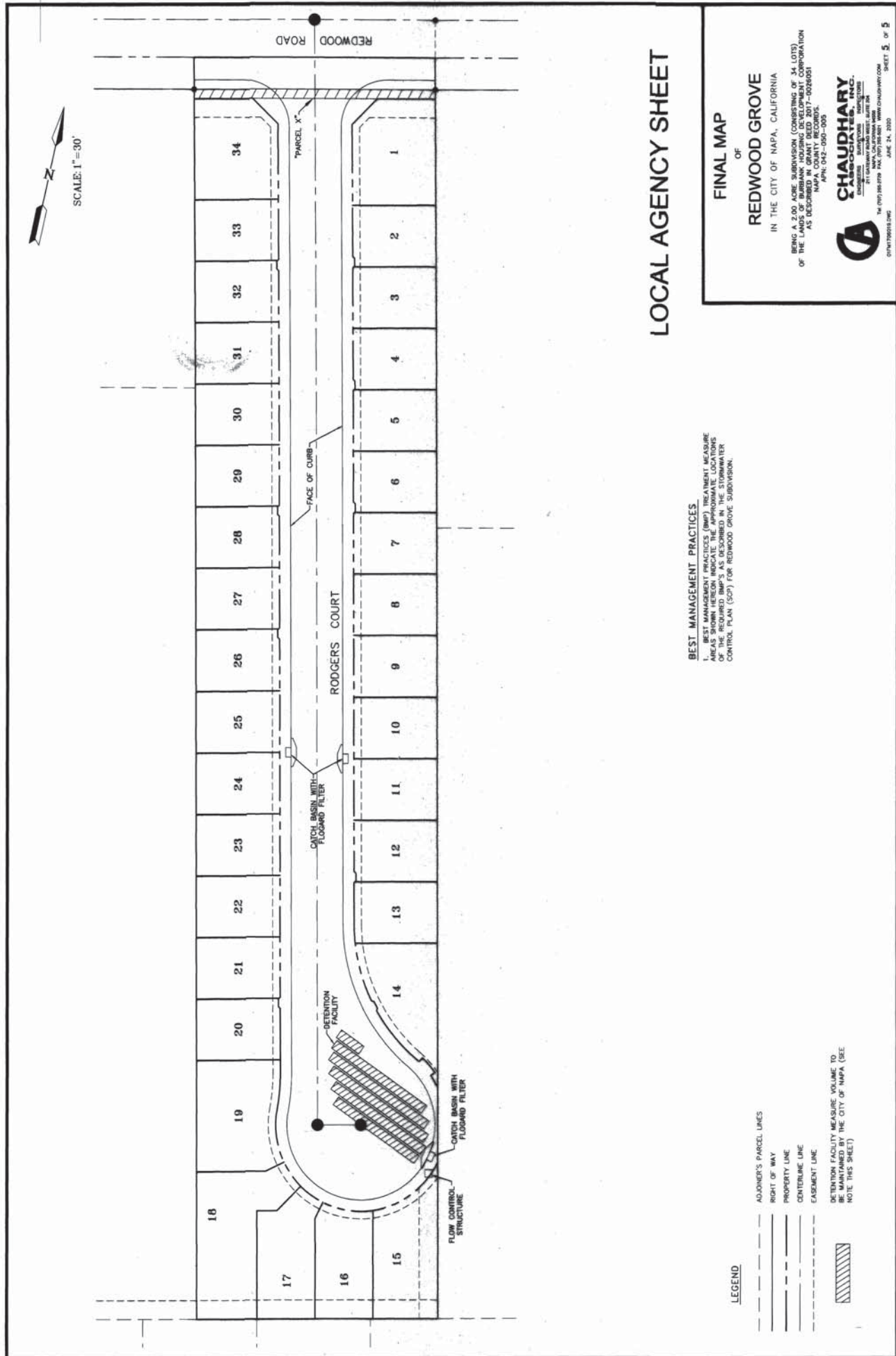


CHAUDHARY ASSOCIATES, INC.

11111 11TH STREET, SUITE 100
NAPA, CALIFORNIA 94930
TEL: (707) 251-1111 FAX: (707) 251-1111
WWW.CHAUDHARY.COM
SPN170003.DWG JUNE 14, 2020 SHEET 2 OF 5







LOCAL AGENCY SHEET

BEST MANAGEMENT PRACTICES
 THE BEST MANAGEMENT PRACTICES (BMP) TREATMENT MEASURE AREAS SHOWN ON THIS MAP ARE REQUIRED TO BE MAINTAINED AS DESCRIBED IN THE STORMWATER CONTROL PLAN (SCP) FOR REDWOOD GROVE SUBDIVISION.

FINAL MAP
 OF
REDWOOD GROVE
 IN THE CITY OF NAPA, CALIFORNIA
 BEING A 3.00 ACRES SUBDIVISION (CONSISTING OF 34 LOTS)
 OF THE LANDS OF AUBURN HOUSING DEVELOPMENT CORPORATION
 AS DESCRIBED IN GRANT DEED 2017-0026001
 NAPA COUNTY RECORDS
 MAP 042-000-000

CHAUDHARY & ASSOCIATES, INC.
 1000 14TH STREET, SUITE 100
 NAPA, CALIFORNIA 94559
 TEL: (707) 260-7779 FAX: (707) 260-7780
 WWW.CHAUDHARY.COM
 SHEET 5 OF 5

- LEGEND**
- ADJACENT'S PARCEL LINES
 - RIGHT OF WAY
 - PROPERTY LINE
 - CENTERLINE LINE
 - EASEMENT LINE
 - DETENTION FACILITY MEASURE VOLUME TO BE MAINTAINED BY THE CITY OF NAPA (SEE NOTE THIS SHEET)