



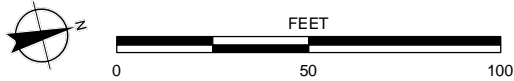
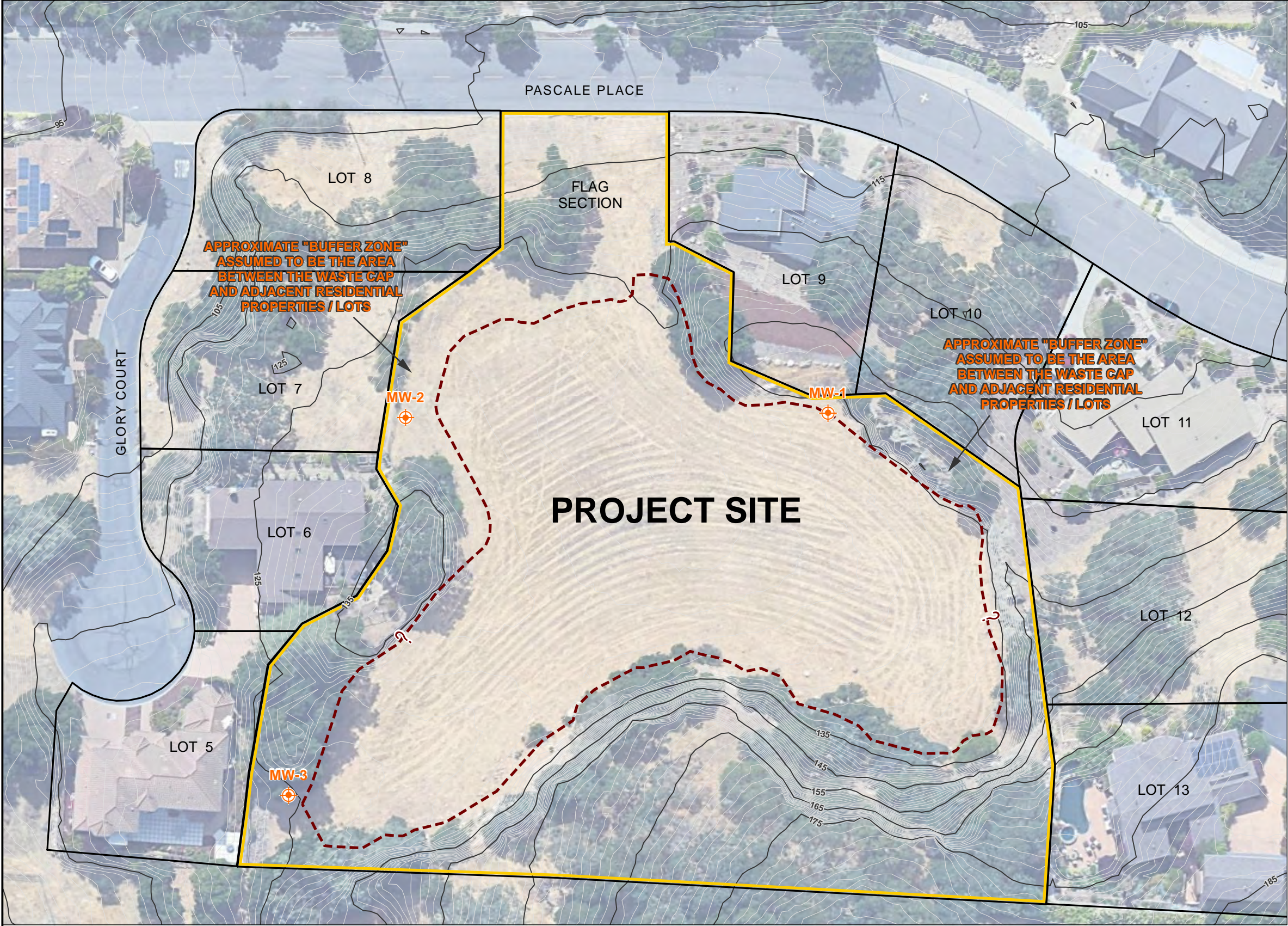


LEGEND

- MW-3**
 LANDFILL GAS WELL (SCS ENGINEERS, 2020)
-  PARCEL A BOUNDARY APN: 045-411-022-000 (SCS ENGINEERS, 2020)
-  PARCEL BOUNDARY
- ADAPTED FROM LANGAN (2018)
-  APPROXIMATE LIMIT OF CAP



NOTE: DIRECTIONS, DIMENSIONS AND LOCATIONS ARE APPROXIMATE. | SOURCES: SITE PLAN - SCS ENGINEERS, DATED: 2-26-20; TOPO - NOAA/USGS LIDARNOAA LIDAR, 2018-2019, NORTHERN CALIFORNIA WILDFIRE-QL2; GOOGLE EARTH, 2024

2_109558001_SP.mxd 9/3/2024 JDL